



# Memory Module Specification

## KVR100X64SC2L/256 256MB Low Profile PC100 144-Pin CL2 SODIMM Memory Module

### DESCRIPTION:

This document describes ValueRAM's CL2 32M x 64-bit (256MB) SDRAM (Synchronous DRAM) PC100 Small Outline DIMM memory module. The components on this module include sixteen 16M x 8-bit (4M x 8-bit x 4 Bank / PC100 components) 4K Refresh SDRAM in UBGA packages. This 144-pin SODIMM uses gold contact fingers and requires +3.3V. The electrical and mechanical specifications are as follows:

### FEATURES:

- ✓ CLK Cycle Time (tCC) min. = 10ns (CAS Latency = 2) / max. = 1000ns
- ✓ Row Cycle Time (tRC) 70ns
- ✓ CLK to Output (tSAC) max. = 6ns (CAS Latency = 2)
- ✓ Single Power Supply of +3.3V (+/- .3V)
- ✓ Power 3.696 W (operating)
- ✓ UL Rating 94 V - 0

**Note:** The module defined in this data sheet is one of several configurations available under this part number. While all configurations are compatible, the DRAM combination and/or the module height may vary from what is described here. However, in no configuration will the module height exceed 1.200" (30.48mm).

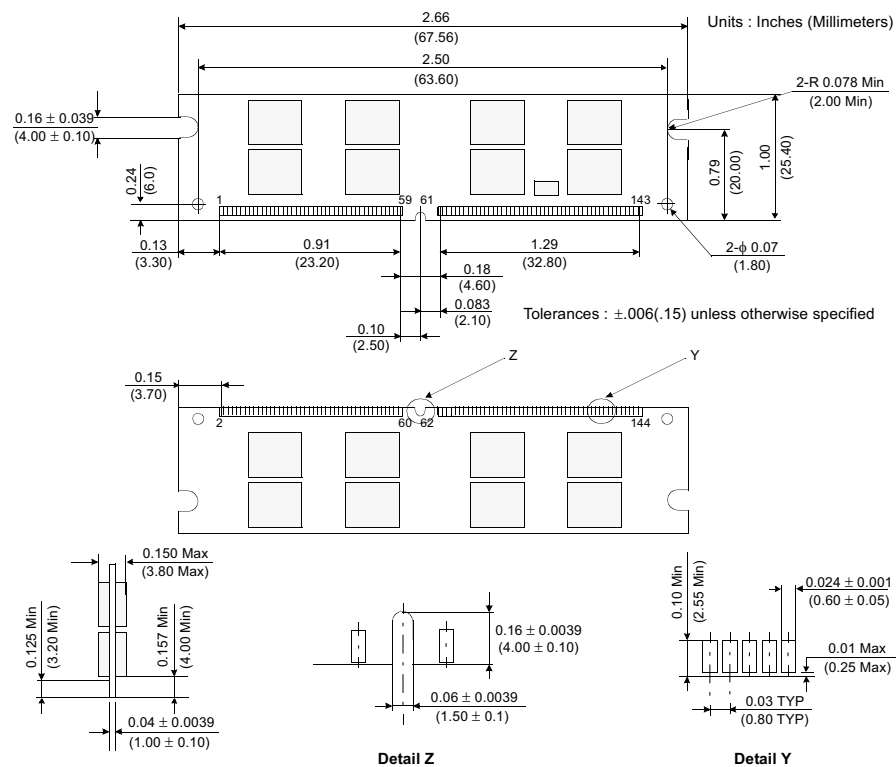


Figure 1: KVR100X64SC2L/256 144-Pin SDRAM Module