

## KVR266X64SC25/128 128MB 16M x 64-Bit DDR266 CL2.5 200-Pin SODIMM

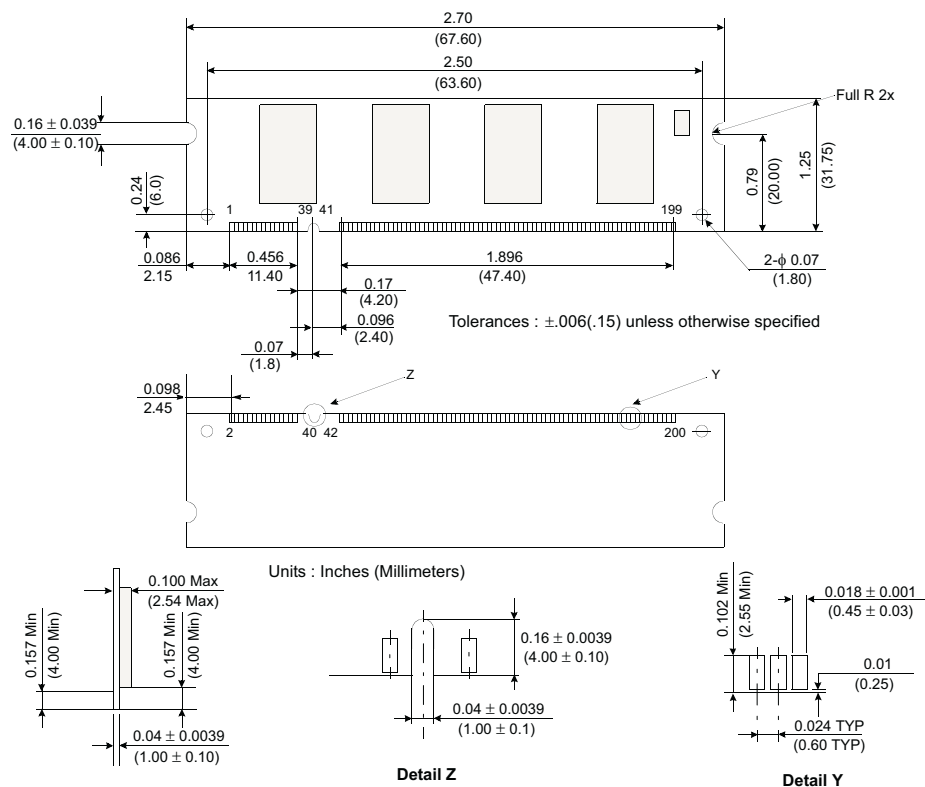
### DESCRIPTION:

This document describes ValueRAM's 16M x 64-bit (128MB) CL2.5 SDRAM (Synchronous DRAM) DDR266 memory module. The components on this module include four 16M x 16-bit (4M x 16-bit x 4 Bank / 133MHz, 7.5ns, CL2.5) DDR266 SDRAM in TSOP packages. This 1200-pin SODIMM uses gold contact fingers and requires +2.5V. The electrical and mechanical specifications are as follows:

### FEATURES:

- ✓ Clock Cycle Time (tCK) 7.5ns (min.) / 12ns (max.)
- ✓ Row Cycle Time (tRC) 65ns (min.)
- ✓ Refresh Row Cycle Time (tRFC) 75ns (min.)
- ✓ Row Active Time (tRAS) 45ns (min.) / 120,000ns (max.)
- ✓ Single Power Supply of +2.5V (+/- .25V)
- ✓ Power 1.650 W (operating power - one bank operation)
- ✓ UL Rating 94 V - 0

**Note:** The module defined in this data sheet is one of several configurations available under this part number. While all configurations are compatible, the DRAM combination and/or the module height may vary from what is described here. However, in no configuration will the module height exceed 1.250" (31.75mm).



**Figure 1: KVR266X64SC25/128 200-Pin DDR SDRAM Module**