

## KVR333D4R25/2GI

### 2GB 256M x 72-Bit DDR333 CL2.5

### Registered 184-Pin ECC DIMM

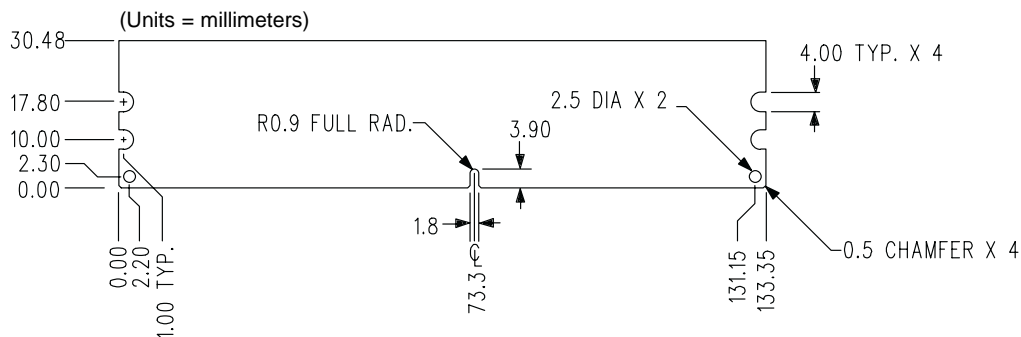
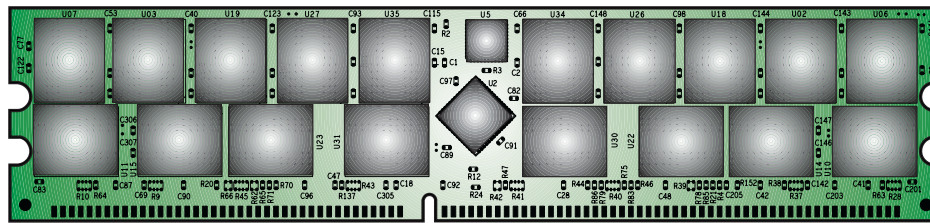
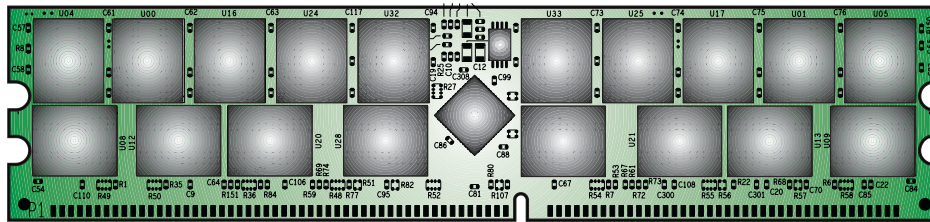
#### DESCRIPTION:

This document describes ValueRAM's 256M x 72-bit 2GB (2048MB) DDR333 CL2.5 SDRAM (Synchronous DRAM) "dual rank" Registered "Intel Certified" ECC memory module. The components on this module include thirty-six 128M x 4-bit (32M x 4-Bit x 4 bank) DDR333 SDRAM in FBGA packages. This 184-pin DIMM uses gold contact fingers and requires +2.5V. The electrical and mechanical specifications are as follows:

#### FEATURES:

- |                                 |                               |
|---------------------------------|-------------------------------|
| ✓ Clock Cycle Time (tCK)        | 6ns (min.) / 12ns (max.)      |
| ✓ Row Cycle Time (tRC)          | 60ns (min.)                   |
| ✓ Refresh Row Cycle Time (tRFC) | 72ns (min.)                   |
| ✓ Row Active Time (tRAS)        | 42ns (min.) / 70,000ns (max.) |
| ✓ Single Power Supply of        | +2.5V (+/- .2V)               |
| ✓ Power                         | 10.225 W (operating)          |
| ✓ UL Rating                     | 94 V - 0                      |

**Note:** The module defined in this data sheet is one of several configurations available under this part number. While all configurations are compatible, the DRAM combination and/or the module height may vary from what is described here. However, in no configuration will the module height exceed 1.200" (30.48mm).



**Figure 1: KVR333D4R25/2GI 184-Pin DIMM**