



IPO02
Sweex USB Internet Phone

Introduction

First of all, many thanks for purchasing the Sweex USB Internet Phone. With this easy-to-connect telephone you can make calls via the Internet. To ensure this product operates correctly, we advise you to carefully read this manual first. If despite this manual you still experience problems during installation or operation of this product, go to www.sweex.com and look under the heading service & support.

Contents of the box

Prior to installation, check if all required parts are present. The following parts must be present in the box:

- USB Internet phone
- CD-ROM including drivers and manual

If one of the above parts is missing, please contact the supplier.

Specifications

- Suitable for PC to PC and PC to telephone connections
- Supports: USB 1.1, no sound card needed
- Bus powered
- Caller ID for VoIP calls
- LCD and LED display
- Echo and noise suppression
- Full duplex communication
- Key sounds
- Pause dial tone function

System requirements

- Computer system with 200 MHz or higher processor speeds
- USB 1.1 or 2.0 connection
- 64 MB RAM memory
- 10 MB or more hard disk space
- Operating system Windows 98SE/2000/XP
- Internet connection

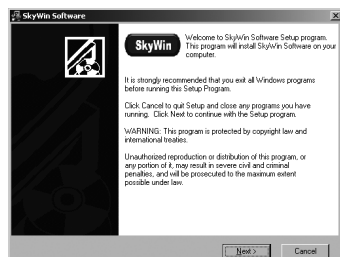
In order to use the Sweex Internet phone successfully, you must use suitable software such as Skype™. We do not need to emphasise that you need to have an active Internet connection in order to successfully make calls with other users.

Important! Prior to connecting the Sweex Internet USB phone to the computer, you must first install the SkyWin software provided.

The developments in the fields of hardware and software follow each other in rapid succession. We therefore advise you to ensure that the operating system you use is up-to-date before you start the installation. This update is easy to carry out by starting up "Internet Explorer" and selecting the option "Windows Update" in the "Extra" menu.

Installing the drivers

Insert the driver software CD-ROM provided in the CD-ROM or DVD player. The CD will start playing automatically and the Installation Screen will appear on your screen.



Follow these instructions if the CD does not start playing automatically: Go to the Start Menu and select the option 'Run'. Type in X:\Setup, X being the drive letter of the CD or DVD player. Click on Next to start the installation process.



By default, the software is installed in the folder C:\Program Files\SkyWin. We advise you to accept this folder and to continue with the installation process. Click Next again.



Click on Finish to complete the installation process. In order to activate any changes made, the computer must then be restarted.

After the computer has been restarted, a pop-up window may appear. This depends on whether or not the Skype™ software has already been installed.



Choose the option Allow this program to use Skype™ and click on OK.

Removing the drivers

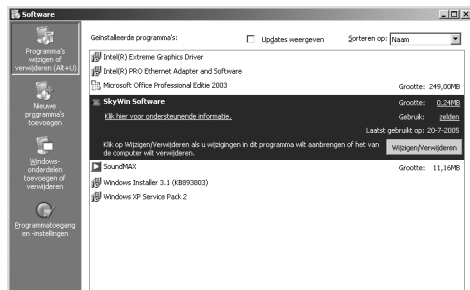
If ever you need to remove the drivers from the computer, follow these instructions:

Windows XP Classic display

In the Start Menu, select the options Settings - Configuration Screen - Add or Remove Programs. In the list that subsequently appears, select SkyWin Software.

Windows XP display

In the Start Menu, select the options Configuration Screen - Software. In the list that subsequently appears, select SkyWin Software and click on 'Change/Remove'.

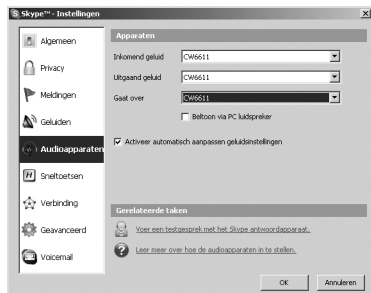


Connecting the Sweex USB Internet Phone



As soon as the drivers have been installed and the computer has been restarted, the Sweex USB Internet phone can be connected to an available USB port. Windows will automatically recognise the telephone and activate the correct drivers. If all goes well, the time will appear in the phone's display.

To ensure that the Sweex USB Internet phone functions correctly, you must check the sound settings of Skype™. Start Skype™ and select Settings in the Actions Menu.

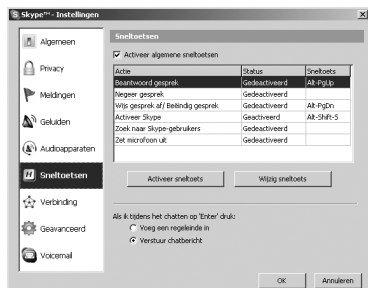
On the left, select Audio Devices and for Incoming, Outgoing and Via, select the Sweex USB Internet phone (CW6611 or USB audio device).



Function of the keys

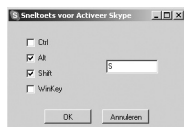
Key	Function
1	Key 1
2	Key 2
3	Key 3
4	Key 4
5	Key 5
6	Key 6
7	Key 7
8	Key 8
9	Key 9
0	Key 0
#	Key #
*	Key *
Enter	Initiates calling (after selecting a contact or having keyed in a number)
V+	Volume up
V-	Volume down
5	One line up
6	One line down
4	Opens the contacts list
3	Closes the contacts list
Tab	Switches between Contacts and manual number input
C	Deletes the last digit
S	Prompts the Skype™ window
	Answers a call
	Ends a call

In order to activate the S-key on the telephone, you must adjust one of the settings in Skype™. In Skype™, select menu option Actions - Settings.



On the left-hand side, select the option "Hotkeys". Tick the option "Activate general Hotkeys". Select the option "Activate Skype". Click the button "Change Hotkey".

Tick the options "Alt" and "Shift" and enter S.



Then click the button "Activate Hotkey". From now on, you can start Skype™ by pressing the S button Sweex USB on the telephone.

Making calls with the Sweex USB Internet Phone




In order to call another Skype™ user, you must select this user on the Contacts page and then press Enter. Alternatively, you can allocate a speed dial number to the contact. This way, you can call someone directly from the Sweex USB Internet phone.

In order to call a land line or mobile number, you need SkypeOut. In order to use this option, you must first buy call credit. Once you have SkypeOut call credit, follow the instructions below to make a call.

First key in 011 to indicate that a SkypeOut call must take place. Then key in the country code. Note: even when you want to make a call to a Dutch phone number whilst in the Netherlands, you must still enter the country code. The country code is followed by the area code, leaving out the 0. Then key in the subscriber's number.

SkypeOut	Country code	Area code	Subscriber's number
011	31	15	7501750

Answering a call

When the Sweex USB Internet phone rings to indicate an incoming call, you press  to answer the call or  to reject the call.

Calling contacts

You can use keys 5 and 6 to browse through the contacts list. In order to initiate a call with a certain contact, you must select this contact and then press Enter.

Assigning Hotkeys

Skype™ allows you to use a maximum of 99 (1 to 99) Hotkeys. Assigning a hotkey to a contact enables you to speed dial a contact by pressing 1 or two keys. In Skype™, select the desired contact and right-click it with the mouse. In the pop-up box, select option "Assign Hotkey". Then type in a number between 1 and 99.

Warranty

All articles that are carried under the name Sweex have a 3-year term of guarantee. Only the Sweex Digital photo and video cameras have a 2-year term of guarantee. We do not provide support or warranty for the supplied software or (rechargeable) batteries.

Settlement of guarantee only takes place via the dealer where you have purchased the product in question.