

KVR667D2S4P5/1G
1GB 128M x 72-Bit DDR2-667
CL5 Registered w/Parity 240-Pin DIMM

DESCRIPTION:

This document describes ValueRAM's 128M x 72-bit 1GB (1024MB) DDR2-667 CL5 SDRAM (Synchronous **DRAM**) "single rank" Registered w/Parity memory module. The components on this module include eighteen 128M x 4-bit DDR2-667 SDRAM in FBGA packages. This 240-pin DIMM uses gold contact fingers and requires +1.8V. The electrical and mechanical specifications are as follows:

FEATURES:

- | | |
|---|-------------------------------|
| ✓ Clock Cycle Time (tCK) CL=5 | 3ns (min.) / 8ns (max.) |
| ✓ Row Cycle Time (tRC) | 54ns (min.) |
| ✓ Refresh to Active/Refresh Command Time (tRFC) | 105ns |
| ✓ Row Active Time (tRAS) | 39ns (min.) / 70,000ns (max.) |
| ✓ Single Power Supply of | +1.8V (+/- .1V) |
| ✓ Power | 3.816 W (operating) |
| ✓ UL Rating | 94 V - 0 |

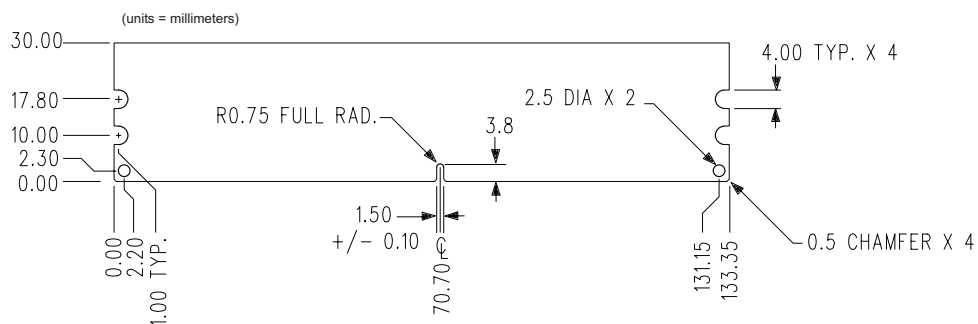
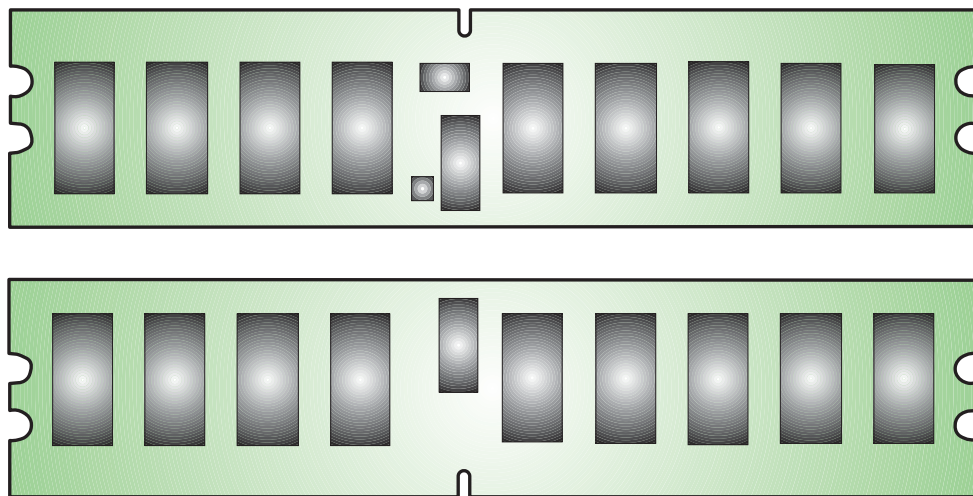


Figure 1: KVR667D2S4P5/1G 240-Pin DIMM