

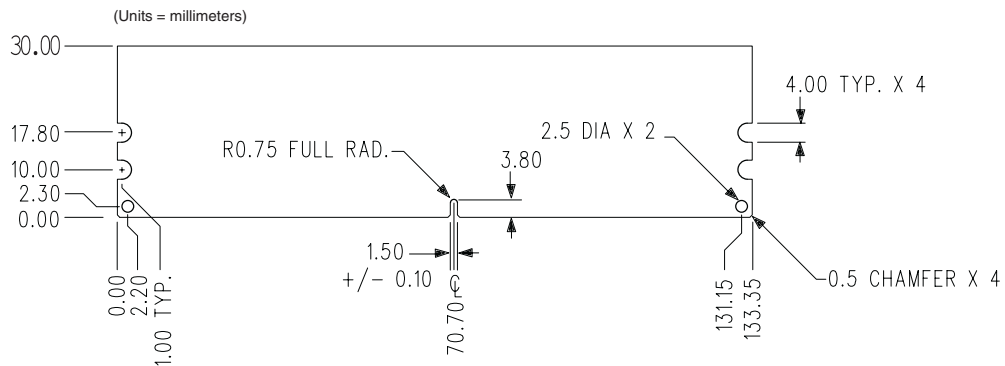
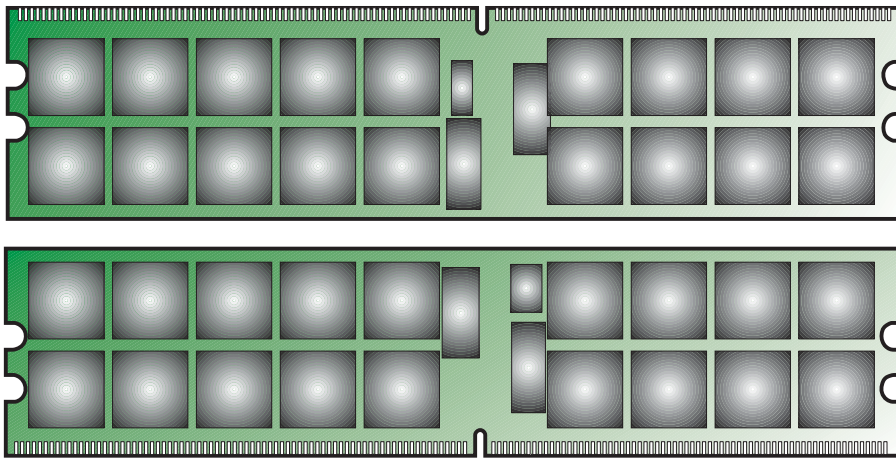
**KVR667D2D4P5/2G**  
**2GB 256M x 72-Bit DDR2-667**  
**CL5 Registered w/Parity 240-Pin DIMM**

**DESCRIPTION:**

This document describes ValueRAM's 256M x 72-bit 2GB (2048MB) DDR2-667 CL5 SDRAM (Synchronous **DRAM**) "dual rank" Registered w/Parity memory module. The components on this module include thirty-six 128M x 4-bit DDR2-667 SDRAM in FBGA packages. This 240-pin DIMM uses gold contact fingers and requires +1.8V. The electrical and mechanical specifications are as follows:

**FEATURES:**

- |   |                               |
|---|-------------------------------|
| ✓ Clock Cycle Time (tCK) CL=5                   | 3ns (min.) / 8ns (max.)       |
| ✓ Row Cycle Time (tRC)                          | 54ns (min.)                   |
| ✓ Refresh to Active/Refresh Command Time (tRFC) | 105ns                         |
| ✓ Row Active Time (tRAS)                        | 39ns (min.) / 70,000ns (max.) |
| ✓ Single Power Supply of                        | +1.8V (+/- .1V)               |
| ✓ Power   | 5.616 W (operating)           |
| ✓ UL Rating                                     | 94 V - 0                      |



**Figure 1: KVR667D2D4P5/2G 240-Pin DIMM**