

KVR333X64SC25/256 256MB 32M x 64-Bit DDR333 CL2.5 200-Pin SODIMM

DESCRIPTION:

This document describes ValueRAM's 32M x 64-bit (256MB) DDR333 CL2.5 SDRAM (Synchronous DRAM) memory module. The components on this module include eight 16M x 16-bit (4M x 16-bit x 4 Bank) DDR333 SDRAM in TSOP packages. This 200-pin DIMM uses gold contact fingers and requires +2.5V. The electrical and mechanical specifications are as follows:

FEATURES:

- ✓ Clock Cycle Time (tCK) 6ns (min.) / 12ns (max.)
- ✓ Row Cycle Time (tRC) 60ns (min.)
- ✓ Refresh Row Cycle Time (tRFC) 72ns (min.)
- ✓ Row Active Time (tRAS) 42ns (min.) / 70,000ns (max.)
- ✓ Single Power Supply of +2.5V (+/- .25V)
- ✓ Operating (IDD0) 2.445 W
- ✓ UL Rating 94 V - 0

Note: The module defined in this data sheet is one of several configurations available under this part number. While all configurations are compatible, the DRAM combination and/or the module height may vary from what is described here. However, in no configuration will the module height exceed 1.250" (31.75mm).

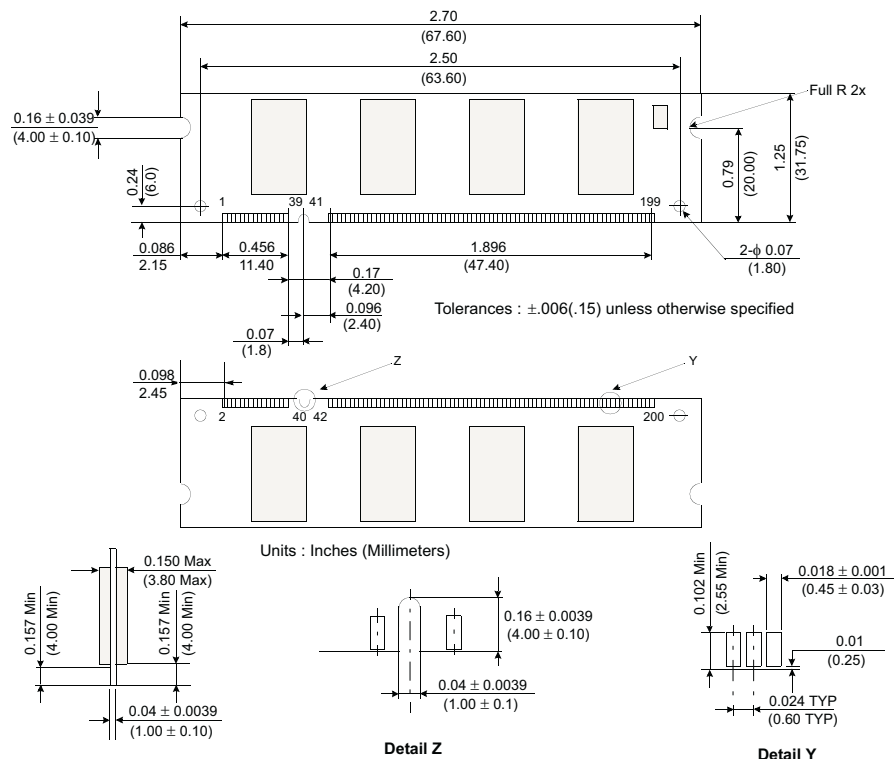


Figure 1: KVR333X64SC25/256 200-Pin SODIMM