

XEROX[®]

Technology | Document Management | Consulting Services

Phaser[®] 6180



color laser printer

Phaser[®] 6180 Evaluator Guide



ABOUT THIS GUIDE

This guide will introduce you to the Xerox® Phaser® 6180 color laser printer, and help you in your printer evaluation process.

CONTENTS

Section 1 — Introducing the Xerox Phaser 6180 color laser printer

- Product Overview 1
- Phaser 6180 Configurations and Accessories 2

Section 2 — Evaluating Color Laser Printers

- Evaluate Value 4
- Evaluate Print Quality 6
- Evaluate User Friendliness 7

Section 3 — Configurations, Specifications, Supplies, Support and Information Sources

- Configuration Summary 9
- Specifications 10
- Supplies 10
- Support and Additional Information Sources 11



SECTION 1

Introducing the Xerox Phaser® 6180 Color Laser Printer

PRODUCT OVERVIEW

The Xerox Phaser 6180 color laser printer blazes a new trail among affordable, easy-to-use color printers designed to support small groups of employees. Delivering the speed and print quality today's small and medium-size businesses need, the Phaser 6180 is an excellent solution for day-to-day color and black-and-white printing. With print speeds up to 20 ppm color and 26 ppm black-and-white, true-to-life colors, easy installation and day-to-day operation, the Phaser 6180 is the right fit for offices looking to upgrade from their aging four-pass color laser or color inkjet printers.

Step up the pace

The Phaser 6180 color laser printer gets your jobs out quickly. Very quickly.

- Printing speed as fast as 20 ppm in full color lets you bring your work to colorful life without slowing you down.
- Black-and-white printing at up to a speedy 26 ppm, which gets your everyday office printing done quickly.
- First-page-out time as fast as 10 seconds means your job is done faster than your trip to the printer.

Unleash your potential

With vibrant, true-to-life colors and crisp text and image definition, the Phaser 6180 prints like a pro.

- Print resolution up to 600 x 600 x 4 dpi delivers results that get your work noticed.
- True Adobe® PostScript® 3™ support ensures bright, vivid and accurate colors and graphics.
- PANTONE® Color approved solid-color simulations give you peace of mind that the colors you expect are the colors you'll get.
- Emulsion Aggregate High Gloss toner uses smaller, more uniform toner particles to bring more detail and clarity to every image.

Work hard, print easy

From installation to everyday operation, the Phaser 6180 laser printer provides a wealth of features to make office life easier.

- Included installation software is extremely fast and easy, getting you up and running in minutes whether you have IT support or not.
- Keep tabs on print jobs and get quick access to online support from the comfort of your chair with CentreWare® IS Embedded Web Server.
- Print cartridges combine toner and the imaging unit, which streamlines the replacement of routine items.
- PrintingScout™ saves precious time by tracking print jobs and providing immediate print-issue alerts with correction suggestions.

PHASER 6180 CONFIGURATIONS AND ACCESSORIES

The Phaser 6180 comes packed with features to support busy workgroups in small and medium-size businesses



PHASER 6180N STANDARD FEATURES

Print Performance

- Print Speed — Up to 20 ppm color, 26 ppm black-and-white
- First-Page-Out Time — As fast as 10 seconds color
- Resolution — Up to 600 x 600 x 4 dpi
- Language Support — True Adobe® PostScript® 3™, PCL® 6 emulation

Controller

- Processor — 400 MHz
- Memory — 128 MB standard (1152 MB maximum)

Connectivity

- Network — 10/100Base-TX Ethernet
- Direct Connect — USB 2.0, Parallel

Paper Capacity: 400 total sheets, standard (950 total sheets, optional)

- Tray 1/Multipurpose Tray (MPT) — 150 sheets
- Tray 2 — 250 sheets
- Tray 3 (optional) — 550 sheets

Paper Handling

- Supported Sizes —
 - Tray 1/MPT — Custom sizes from 3 x 5 in. to 8.5 x 14 in. (76.2 x 127 mm to 220 x 355.6 mm)
 - Trays 2 and 3 — Custom sizes from 5.8 x 8.2 in. to 8.5 x 14 in. (148 x 210 mm to 220 x 355.6 mm)
- Supported Weights —
 - All Trays — 17 to 40 lb. bond, 40 to 80 lb. cover (65 to 220 gsm)
- Media Types — Plain paper, transparencies, labels, envelopes, business card stock, glossy

Print Features

- Standard — Banner sheets*, Booklet printing*, Covers*, Fit to page, Overlays, Separators, Transparency separators, N-up, Skip blank pages, Watermarks*, Poster printing*
- Advanced (requires at least 256 MB memory) — Secure Print, Proof Print, RAM Collation

Reliability

- Duty Cycle — 60,000 pages per month**
- Warranty — One-year on-site, Xerox Total Satisfaction Guarantee

* Available only with PCL print driver

** Print volume uniformly distributed over 30 days



PHASER 6180DN STANDARD FEATURES

Includes all capabilities of the Phaser 6180N, with the following upgrade:

Print Performance

- Automatic two-sided output

PHASER 6180 OPTIONAL ACCESSORIES

- 550-sheet feeder, adjustable to support up to legal-size media
- 256 MB and 512 MB memory upgrades
- Multiprotocol network card, which adds support for DDNS, IPP, Wins, SSL/HTTPS
- Duplex unit adds to automatic two-sided printing (for Phaser 6180DN only)
- Wireless network adapter



*Phaser 6180 with optional
550-sheet feeder*

Section 2

Evaluating Color Laser Printers

While the benefits of color are easy to see, evaluating color printers for future purchase and deployment into your business can be more challenging. Based on years of experience and research into the real-world needs of color printer users, Xerox has identified some key issues for you to consider as you conduct your color printer evaluations.

Color printers that are deployed into small businesses or offices have unique requirements from other color printers on the market. Overall value, print quality, and user friendliness are the attributes that small office customers should evaluate when selecting a color laser printer for their environments.

Evaluate Value

Purchase cost, operating costs and productivity — each of these impacts the overall value you will receive from the color printer you ultimately purchase.

Evaluate Performance and Print Quality

More than just pages per minute, the overall printing performance of a color printer will indicate whether it is able to support the workload of your busy employees and produce documents that will wow your customers.

Evaluate User Friendliness

It's important that printers in this class are easy to set up, use and manage on an ongoing basis — whether you have IT support or not.

This section of the Evaluator Guide will examine each of these areas and suggest ways you can evaluate printers against these requirements. Do this for all the color laser printers you consider, and you'll see how the Phaser 6180 exceeds expectations on all counts.



EVALUATE VALUE

Purchasing a color printer is not a trivial investment for a small office or small business. Evaluating the **overall value** that a printer in the entry-level price range delivers is an important step during the purchasing process. Does the printer deliver a **level of performance** that will allow you to **increase productivity** in your office or workgroup? Does the printer deliver **new features** that will enable you to **accomplish new things**? Lastly, does the printer offer **paper capacities** that fit your workload?

THE XEROX
ADVANTAGE

HOW THE XEROX PHASER 6180 EXCEEDS THE VALUE REQUIREMENT:

PERFORMANCE

The Phaser 6180 sets a new standard for performance in its class, with color printing speeds up to 20 ppm and black-and-white print speeds up to 26 ppm. This level of performance will easily handle the workload of your small group of professionals, whether your documents are primarily color or black-and-white.

The Phaser 6180 doesn't just print pages quickly — it gets jobs started quickly with first-page-out times as fast as 10 seconds. Even complex print jobs are processed quickly by the Phaser 6180 print controller, which features a 400 MHz controller and 128 MB of memory standard (1,152 MB maximum).

ADVANCED PRINTER FEATURES

The Phaser 6180 is packed with advanced print features that you might be surprised to find on a printer that's so affordable. Expand the print capabilities of your office, with features ranging from booklet printing to adding watermarks to documents.

Advanced features include:

- Banner sheet¹ — Prints banners using multiple sheets
- Booklet printing¹ — Formats printed documents, such as brochures or handouts, for folding into booklets
- Covers¹ — Prints cover pages for documents on specified media (colored paper to make print jobs easily sortable, for instance)
- N-up printing — Prints multiple pages on each page, which is especially convenient when printing presentations
- Poster printing¹ — Enlarges images by printing onto multiple sheets of paper
- Proof print² — Prints the first set of a multiple-set job, so you can make sure you've got the right print settings before releasing the remaining sets to be printed
- RAM collation² — Collates print jobs consisting of multiple sets of multipage documents, which eliminates the need to manually collate documents after the job is completed
- Secure print² — Holds the job at the printer until you release it with a specified 4-digit PIN code, which ensures that sensitive or confidential files are not exposed in the output tray
- Skip blank pages — Conserve paper and supplies by skipping blank pages within a document
- Transparency separators — When printing transparencies, include plain paper separator pages with or without the images for the corresponding transparency page
- Watermarks¹ — Adds watermarks to printed documents to denote “Confidential” or “Draft” documents

¹ Only available when using PCL[®] 6 emulation print driver
² Requires minimum 256 MB memory



MEDIA HANDLING

The Phaser 6180 has a standard total paper capacity of 400 sheets, with the 150-sheet Tray 1/MPT and the 250-sheet Tray 2. For most offices purchasing a printer in this class, a 400-sheet capacity will effectively minimize the number of interventions required when paper runs out.

For offices with heavier workloads, adding the optional 550-sheet Tray 3 increases total capacity to 950 sheets. The capacity of Tray 3 is large enough for you to load an entire ream of paper without waiting for the tray to run completely empty.

EVALUATE PRINT QUALITY

Print quality is actually the sum of many factors involved in reproducing the image on your computer screen to the printed page. Does the printer's **color and image quality** exceed the requirements for your **internal and external applications**? Is the **range of media types and sizes** you regularly use supported by the printer?

THE XEROX
ADVANTAGE

HOW THE XEROX PHASER 6180 EXCEEDS THE PRINT QUALITY REQUIREMENT:

COLOR QUALITY AND PRINT RESOLUTION

The ability to deliver vibrant color prints and crisp, fine-line detail involves many attributes of a color printer. The Phaser 6180 offers multiple print modes that deliver up to 600 x 600 x 4 dpi resolution — delivering 16 shades of color per pixel and producing exceptional photographic quality. The 400 MHz controller features 128 MB of RAM, and it works with the True Adobe® PostScript® 3™ and PCL® 6 emulation print drivers to quickly and accurately process print jobs. The Phaser 6180 features PANTONE® Color approved solid-color simulations and includes a number of color correction settings to give you true-to-life colors and powerful color management capabilities.

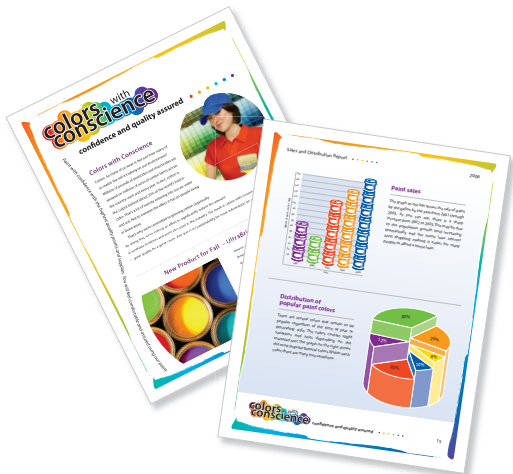
APPLICATION RANGE

Common types of office applications include presentations, reports, proposals, spreadsheets and brochure layouts. The impact of these kinds of applications is maximized when they are printed in color. The high-quality color laser output of the Phaser 6180 will help enliven your presentations, enhance the communication of your ideas in marketing collaterals, and improve the professional look of your customer proposals and documents.

MEDIA SUPPORT

The Phaser 6180 prints on a wide variety of media, including plain printer paper, transparencies, labels, envelopes, card stock, business cards and glossy. Support for a range of media sizes and weights means you have flexibility when printing and producing materials in-house. Phaser 6180 media support includes:

- **Media Size** — The Tray 1/MPT supports the widest range of paper sizes, including custom sizes from 3 x 5 in. up to 8.5 x 14 in. and all standard sizes in between. Tray 2 and the optional Tray 3 support custom sizes between 5.8 x 8.2 in. and 8.5 x 14 in.
- **Media Weight** — The Phaser 6180 supports the same media weights in all three trays, with support for 17 to 40 lb. bond, 40 to 80 lb. cover and 65 to 220 gsm media.



EVALUATE USER FRIENDLINESS

User friendliness starts when the printer arrives at your office and carries through to your ongoing day-to-day experience. Most small businesses have **limited access to IT resources**, so it's important that the color printers you adopt are **easy to set up, install and manage**. Print drivers need to offer easy access to key features and be intuitively organized. Lastly, when troubleshooting is required, you should have access to strong tools to **minimize downtime** and **maximize productivity**.

THE XEROX
ADVANTAGE

HOW THE XEROX PHASER 6180 EXCEEDS THE USER FRIENDLINESS REQUIREMENT:

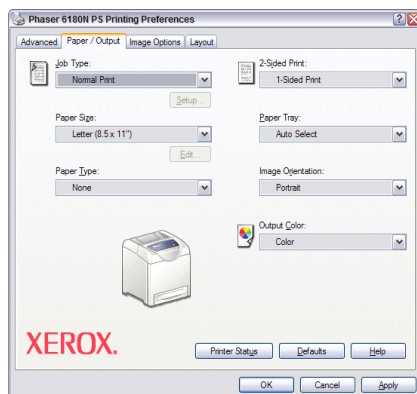
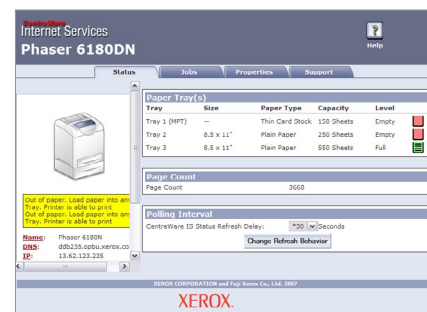
SETUP AND INSTALLATION

Once the Phaser 6180 is unpacked and in place, the installation process is simple and automated. Plug in the power and connectivity cables, and turn on the printer. The Phaser 6180 will automatically connect to your network. Then, using the included installation CD, step through the wizard-based print driver installation process to connect your computer to the Phaser 6180. In as few as four clicks, you'll be connected and printing.

DAY-TO-DAY MANAGEMENT

Xerox provides a set of tools and utilities to ease the ongoing management and administration of the Phaser 6180. Whether you manage a single Phaser 6180 or a group of networked printers and multifunction products (MFPs), Xerox delivers utilities that make your life easier.

- Xerox CentreWare® Internet Services (IS) — CentreWare IS is an embedded web server that allows you to connect to the Phaser 6180 via any standard web browser. With CentreWare IS, you can monitor printer status, view the print job queue, manage settings and properties, and access troubleshooting and support resources.
- Xerox CentreWare® Web Network Management Utility — Companies that have multiple printers and MFPs connected to their networks can install, view monitor device status, configure, track usage and troubleshoot from their computer via one convenient and powerful web application. Additionally, the interoperability of CentreWare Web means you can manage your non-Xerox devices as well.



PRINT DRIVERS

The Phaser 6180 print drivers are intuitively organized to offer quick access to the most commonly used features, with easy tab-based access to the complete feature set. The default Paper / Output tab offers features like job type, paper size, paper type, 2-sided print settings, paper tray, image orientation and output color. More in-depth image options, layout options, and advanced settings are available via other tabs.

SUPPLY REPLACEMENT

Convenient toner-level gauges are located on the Phaser 6180 front panel and via CentreWare IS. Access to current print cartridge and maintenance-item levels helps you predict when you need to order replacement supplies.

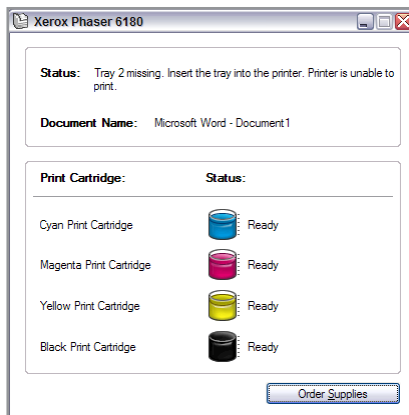
Supply replacement is simple as well, with all supplies accessed through the front of the printer. This eliminates the need to either pull the printer out from the wall or turn it around to install fresh consumables.



TROUBLESHOOTING

To avoid downtime and maximize productivity, the Phaser 6180 includes these convenient, proactive troubleshooting tools:

- PrintingScout™ — Saves precious time by tracking print jobs and providing immediate print-issue alerts with instructions on how to resolve problems.
- Online Support Assistant — Access online troubleshooting information from the same Knowledge Base library used by Xerox customer support professionals, directly from CentreWare IS.



SECTION 3

Configurations, Specifications, Supplies, Support and Information Sources

PHASER 6180 CONFIGURATION SUMMARY



	Phaser 6180N	Phaser 6180DN
Speed	Up to 20 ppm color / 26 ppm black-and-white	
Duty Cycle	60,000 pages / month*	
Paper Handling		
Paper input	Standard	Tray 1 (MPT): 150 sheets; Custom sizes: 3 x 5 in. to 8.5 x 14 in. / 76.2 x 127 mm to 220 x 355.6 mm
		Tray 2: 250 sheets; Custom sizes: 5.8 x 8.2 in. to 8.5 x 14 in. / 148 x 210 mm to 220 x 355.6 mm
	Optional	Tray 3: 550 sheets; Custom sizes: 5.8 x 8.2 in. to 8.5 x 14 in. / 148 x 210 mm to 220 x 355.6 mm
Paper output	300 sheets	
Two-sided output	Optional	Standard
Print		
First-page-out time	As fast as 10 seconds color	
Resolution (max)	600 x 600 x 4 dpi	
Processor	400 MHz	
Memory (std / max)	128 MB / 1152 MB	
Connectivity	10/100Base-TX Ethernet, USB 2.0, Parallel, Optional multiprotocol network card, Optional wireless network adapter	
Page Description Languages	Adobe® PostScript® 3™, PCL® 6 emulation	
Print features	Standard	Booklet printing, Covers, Separators, Transparency separators, N-up, Watermarks, Overlays, Poster printing, Banner sheets, Fit to page
	Additional**	Secure Print, Proof Print, RAM collation
Warranty	One-year on-site warranty, Xerox Total Satisfaction Guarantee	

* Print volume uniformly distributed over 30 days

** Requires minimum 256 MB RAM

PHASER 6180 SPECIFICATIONS

Device Management	CentreWare® IS Embedded Web Server, CentreWare Web, PrintingScout™, MailLinX email alerts
Print Drivers Support	Windows® 2000/XP/2003 Server, Vista, Mac OS®X version 10.2 or higher, Unix: Solaris™ 8/9/10, HP-UX® 11.0, AIX® 4.3.3 Linux: SUSE™ 9.2/9.3, Turbo Linux™ 10, Red Hat® ES3/ES4, Fedora™ Core 1, Yellow Dog 3.X
Media Handling	Supported sizes: Tray 1/MPT: Custom sizes from 3 x 5 in. to 8.5 x 14 in. (76.2 x 127 mm to 220 x 355.6 mm) Trays 2 and 3: Custom sizes from 5.8 x 8.2 in. to 8.5 x 14 in. (148 x 210 mm to 220 x 355.6 mm)
	Supported weights: All Trays: 17 to 40 lb. bond, 40 to 80 lb. cover (65 to 220 gsm)
Operating Environment	Temperature: Storage: 32° to 95° F (0° to 35° C), Operating: 50° to 90° F (10° to 32° C) Relative Humidity: Storage: 15% to 80%, Operating: 15% to 80% Sound power levels: Printing: 6.62 B, Standby: 4 B
Electrical	Power: 110–127 VAC, 50/60 Hz; 220–240 VAC, 50/60 Hz Power consumption: Power Save: 6.3 W, Standby: 68.9 W, Printing: 410 W ENERGY STAR® qualified
Physical Dimensions (WxDxH)	Phaser 6180N: 15.7 x 19.4 x 18.5 in. (400 x 493 x 470 mm); Weight: 59.8 lbs. (27.2 kg) Phaser 6180DN: 15.7 x 19.4 x 18.5 in. (400 x 493 x 470 mm); Weight: 62.3 lbs. (28.3 kg) Optional 550-Sheet Feeder: 15.7 x 19.4 x 5.4 in. (400 x 493 x 138 mm); Weight: 16.9 lbs. (7.7 kg)
Certification	FCC Part 15, Class B, Listed UL 60950-1/CSA 60950-1-03 CE Mark applicable to Directives 73/23/EEC and 89/336/EEC, Section 508 ADA

PHASER 6180 SUPPLIES, OPTIONS AND EXTENDED SERVICE AGREEMENTS

Supplies	Part Number	Description	Capacity
	113R00719	Cyan Standard-Capacity Printer Cartridge	Average 2,000 standard pages ¹
	113R00720	Magenta Standard-Capacity Printer Cartridge	Average 2,000 standard pages ¹
	113R00721	Yellow Standard-Capacity Printer Cartridge	Average 2,000 standard pages ¹
	113R00722	Black Standard-Capacity Printer Cartridge	Average 3,000 standard pages ¹
	113R00723	Cyan High-Capacity Printer Cartridge	Average 6,000 standard pages ¹
	113R00724	Magenta High-Capacity Printer Cartridge	Average 6,000 standard pages ¹
	113R00725	Yellow High-Capacity Printer Cartridge	Average 6,000 standard pages ¹
	113R00726	Black High-Capacity Printer Cartridge	Average 8,000 standard pages ¹

¹Average standard pages. Declared Yield in accordance with ISO /IEC 19798. Yield will vary based on image, area coverage and print mode.

Options	Part Number	Description
	097S03744	550-Sheet Feeder, adjustable up to legal, Phaser 6180
	097S03743	256 MB Phaser Memory
	097S03635	512 MB Phaser Memory
	097S03773	Multiprotocol Network Card includes DDNS, IPP, Wins, SSL/HTTPS
	097S03746	Duplex Unit: Provides Two-Sided Automatic Printing
	097S03740	Wireless Network Adapter with North American power converter

Extended Service Agreements	Part Number	Description
	E6180SA	Annual On-Site Service Agreement
	E6180S3	2 years additional (total of 3 years)*
	E6180S4	3 years additional (total of 4 years)*

* Available for purchase during first 90 days of product ownership

SUPPORT AND ADDITIONAL INFORMATION SOURCES

UNRIVALED SERVICE AND SUPPORT

Behind every Xerox product is a large network of customer support that's unrivaled in the industry and available when you need it. Xerox service professionals use leading-edge technologies to keep you up and running. They're even linked to the engineers who designed your product, so you can be confident when you choose Xerox. And genuine Xerox supplies are always readily available.

TOTAL SATISFACTION GUARANTEED

The exclusive Xerox Total Satisfaction Guarantee, recognized as unique in the industry, covers every Phaser device that has been continuously maintained by Xerox or its authorized representatives under a Xerox express warranty or a Xerox maintenance agreement. You decide when you're satisfied.

XEROX OFFICE SERVICES SUPPORT

Asset Management Services

- Asset Optimization and Tracking — Process and tools to optimize an enterprise's office output infrastructure and reduce overall costs
- Break-Fix Management — Single point of ownership and management for break-fix service for all brands of office output devices
- Supplies Management — Process and tools to procure, monitor and replenish all document-related supplies proactively

Imaging and Output Management Services

- Output Management — Single point of management for office output from all output devices — regardless of manufacturer
- Image Capture and Workflow — Cost-efficient solutions for capturing, managing, retrieving and distributing information into digital repositories

Support Services

- Technology Procurement and Deployment — A creative and flexible end-to-end print/computer product acquisition solution that uses a single-point-of-contact model, while lowering the total cost of acquisition
- Help Desk Services — A broad range of enterprise services managed through a single point of contact and delivered through an on-site or off-site model
- End User Services — Microsoft software implementation, IT project consulting and customer education
- Access Managed Services

Student/Patron Access Services

- Student and Library Patron Access — Custom designed and implemented customer-managed solutions for student and library patron print-access management

ADDITIONAL INFORMATION SOURCES

Phaser 6180 Front Panel:

The Front Panel offers device settings, system status and troubleshooting information.

Customer Documentation contains:

- Installation Guide
- Quick User Guide
- Software/Documentation CD-ROM
- Registration Card
- Warranty Booklet

On the web:

Visit www.xerox.com/office for:

- Product, supply and support information
- Downloading drivers
- Finding your local Xerox sales representative
- Online documentation

Visit www.xerox.com/office/support for:

Support and service information, including the same troubleshooting Knowledge Base used by Xerox Customer Support staff to provide the latest technical information on:

- Application issues
- Errors
- Print-quality issues
- Troubleshooting

NOTES

NOTES



Questions? Comments? Problems?

If you have any questions, please contact your Xerox sales representative or local reseller call **1-877-362-6567** or visit us on the web at **www.xerox.com/office**.

