



## HP Designjet 130 Printer series



Printers for creative professionals—the affordable HP Designjet 130 multi-format printing systems create fade-resistant, photo-quality images with consistent colors for professional photos, prints and proofs.

### Color images that last

- **Fade-resistant, photo-quality images.** Proprietary dye-based HP Vivera inks are carefully engineered to work flawlessly with all parts of the printing systems so you achieve rich, vibrant color and extraordinary photo image quality with exceptional fade-resistance.<sup>1</sup> Graphic designers and professional photographers can rest assured that the images they create will maintain their impact.
- **Rich color depth and minimal dot visibility.** The six-color HP writing system delivers a wide range of colors, deeper blacks, continuous tones and superior gloss uniformity. A four picoliter ink drop size maintains fine detail reproductions, especially in dark areas, and smooth tonal transitions.

### Reliable color

- **See reliable, consistent color from print to print.** The HP Designjet 130 Printer series features automatic closed-loop color calibration to provide consistent color, print to print and printer to printer.
- **Full color workflow support.** Optimized Macintosh and Windows® drivers provide key features for creative professionals, including RGB ICC profiles and full Apple ColorSync support. Optional Adobe® PostScript® 3™ software RIP provides robust color management and proofing options for the CMYK workflow.
- **Making professional color results simpler.** HP's free on-line knowledge center provides illustrated step-by-step instructions specific to your application, computer and workflow. And HP's custom color profiling service provides high-quality ICC media profiles for professionals whose work demands superior color accuracy.

### Postcards to posters

- **Ideas big and small—no more cutting and pasting.** The standard tray holds up to 70 sheets as small as a postcard or as big as a poster (18 x 24 in/457 x 610 mm). Extra-wide front and rear paths allow oversize output up to 24 x 64 in (625 x 1625 mm); standard roll feed supports printing up to 24 in x 50 ft (610 mm x 15 m) and allows you to switch between loaded media options without intervention.
- **Media that shows off your ideas.** The HP Designjet 130 Printer series can handle media weights up to 80 lb (300 g/m<sup>2</sup>), as well as thick or rigid media up to 15 mil. Choose from a variety of media finishes, including gloss, satin and matte.

### Time to design

- **See reliable, consistent color from print to print.** Print at speeds up to 4 minutes per page (mpp) for B (A3) size and up to 12 mpp for an D (A1) size color image in Normal mode, with fast color stability. Proofs and prints can be reviewed and approved in real time.
- **More time creating.** In-house printing for oversize output eliminates delays and shortens project timelines. Reliable, modular HP ink cartridges and printheads require minimal user intervention—further enhancing cost-effectiveness and efficiency.

<sup>1</sup>Wilhelm Imaging Research, Inc. concluded that prints made with HP No. 85 ink cartridges and HP Premium Plus Photo papers may be displayed indoors under glass for 82 years before noticeable fading and staining occur. (see [www.wilhelm-research.com](http://www.wilhelm-research.com) for details).

WHAT DO YOU HAVE TO SAY?

# HP Designjet 130 Printer series

1. LCD printer status indicator for ink supply maintenance and print message alerts.

2. Standard media tray handles media up to 18 x 24 inches (457 x 610 mm) and can accommodate up to 70 sheets.

3. Front bypass slot accommodates cut-sheet media up to 24 inches (610 mm) wide.

4. Small footprint allows placement of printer on tabletop or in common work area.

5. USB and parallel connections plus network capability (standard on 130nr) ensure easy system integration.

6. Rear bypass slot handles heavy and rigid media of weights up to 80 lb (300 g/m<sup>2</sup>).

7. Standard roll feed (optional on the HP Designjet 130) feeds rolls up to 24 inches (610 mm) wide.

Internal color sensor for color consistency

Fade-resistant inks with 4 pl drop size for fade-resistant, photo-quality images

Modular ink system with six independently replaceable ink cartridges allows you to replace only the ink colors you need



HP Designjet 130 front shown



HP Designjet 130nr rear shown

## Series at a glance

### HP Designjet 130

- 70-sheet input tray for sheets up to 18 x 24 inches (457 x 610 mm)
- Slot for single sheets up to 24 x 64 inches (625 x 1625 mm)
- One open EIO slot for optional network connectivity

#### Optional accessories:

- EFI Designer Edition 5.1 RIP for HP (XL)
- Printer stand and media bin
- Standard roll feed
- Additional roll feed spindle
- HP color profiling off-site service

### HP Designjet 130nr

All the features of the 130 model, plus:

- Standard roll feed for printing up to 24 inches x 50 ft (610 mm x 15 m)
- HP Jetdirect 620 internal EIO print server

#### Optional accessories:

- EFI Designer Edition 5.1 RIP for HP (XL)
- Printer stand and media bin
- Additional roll feed spindle
- HP color profiling off-site service

As a creative professional, you need more than reliability, performance and value. Your world is all about color. That's why HP has implemented technologies and solutions that deliver the color quality, consistency and control you need for a superior color experience.

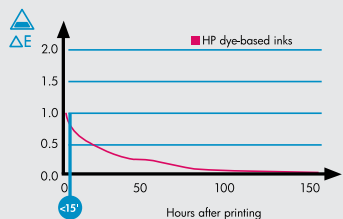
## Color technology by HP

### Inks and media deliver fade resistance and stability

New, dye-based inks, combined together with HP papers, produce images that stabilize in minutes vs. hours and last for years. HP inks, media and printers are designed together for results that do justice to your ideas.

### HP Designjet 130 Printer series

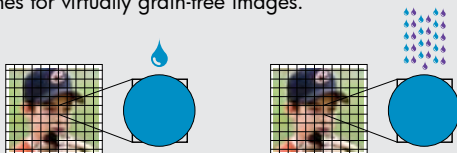
(using HP Proofing Semi-gloss Paper)



### HP color layering technology

Like artists creating new colors by mixing the standard paints on their palettes, multi-layering technology uses the basic CMYKcm palette to achieve a much broader range of printable colors.

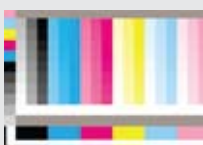
By layering ultra small (4 pl) drops within a single dot, HP Designjet 130 printers produce smoother gradations between tones for virtually grain-free images.



### Automatic color calibration

The automatic closed-loop color (CLC) calibration process enables consistent and accurate color reproduction.

The CLC process is based on measuring, via a color sensor, reflected energy from primary color tiles that are illuminated with a narrow-band light source. The process works in much the same way as a classical densitometer. The printer generates a target, scans the pattern and adjusts based on the results.



## Color solutions for your workflow

RGB or CMYK. Printing or proofing. Pleasing color or accurate color. With the HP Designjet 130 printing system, you can choose the solution that best fits your needs, your workflow and your environment.

### HP Designjet 130 drivers

Optimized Mac and Windows drivers deliver outstanding color output for photographers or designers printing images in an RGB workflow. Support for RGB ICC profiles means you have the choice of managing color in the applications or via ICM profile or ColorSync tools.

The drivers also allow you to balance color channels individually when you need one last tweak.

### EFI Designer Edition RIP for HP

The EFI Designer Edition RIP, tailored for HP printers offers a powerful, yet cost-effective digital proofing system that allows full control over digital proofing needs and saves hassle, time and money. Together, EFI and HP enable designers, photographers and other creative professional to easily generate proof quality prints with sharp detail, color accuracy and smooth tonal transitions.

### Third-party RIPs

HP has worked with virtually all the leading RIP vendors in digital photography, large-format printing and pre-press proofing fields to ensure you can choose the solution that best matches your color workflow.

# HP Designjet 130 Printer series

## Technical specifications

Print speed	
Normal	Up to 4 min/page on B/A3 glossy media, up to 11.9 min/page on D/A1 glossy media
Best	Up to 6 min/page on B/A3 glossy media, up to 17.5 min/page on D/A1 glossy media
Printing	
Print resolution	Up to 2400 x 1200 dpi
Margins	0.2 x 0.47 x 0.2 x 0.2 in (5 x 12 x 5 x 5 mm)
Technology	HP Thermal Inkjet
Technology resolution	HP Color Layering technology, PhotoREt IV
Ink types	Dye-based HP Viverna inks
Ink colors	Cyan, magenta, yellow, black, light cyan, light magenta
Ink drop	4 pl
Print heads	6 (1 each cyan, magenta, yellow, black, light cyan, light magenta)
Minimum line width	0.002 in (0.04 mm)
Media	
Handling	70-sheet input tray, front manual single-sheet feed, rear manual path for thick media, standard roll feed with auto cutter (130nr only)
Types	Bond and coated paper (coated, heavyweight coated, plain), photo (gloss, high-gloss, semi-gloss, satin, matte), proofing (high-gloss contract, semi-gloss contract, matte)
Weight	<b>Tray 1:</b> 17 to 40 lb (65 to 150 g/m <sup>2</sup> ); <b>manual single-sheet feed:</b> 17 to 40 lb (65 to 150 g/m <sup>2</sup> ); <b>rear path:</b> up to 80 lb (300 g/m <sup>2</sup> ); <b>roll feed:</b> 17 to 40 lb (65 to 150 g/m <sup>2</sup> )
Size	<b>Tray 1:</b> 3 x 5.6 to 18 x 24 in (76 x 142 to 457 x 610 mm); <b>manual single-sheet feed:</b> 4.3 x 8.1 to 24.6 x 64 in (110 x 205 to 625 x 1625 mm); <b>rear path:</b> 4.3 x 8.1 to 24.6 x 64 in (110 x 205 to 625 x 1625 mm); <b>roll feed:</b> up to 24 in (610 mm)
Thickness	<b>Tray 1:</b> up to 8 mil; <b>envelopes:</b> up to 15 mil; <b>front path:</b> up to 8 mil; <b>rear path:</b> up to 15 mil; <b>roll feed:</b> up to 8 mil
Standard sizes	A1, A1+, A2, A3, A4, B2, B3, B4 (letter, legal, tabloid, C, D, D+, envelopes)
Connectivity	
Interfaces (standard)	USB 1.1 (USB 2.0 compliant), Centronics parallel IEEE-1284 (ECP compliant), 1 EIO slot, HP Jetdirect Fast Ethernet Print Server (130nr only)
Interfaces (optional)	Compatible HP Jetdirect LAN cards
Print languages	PCL 3 GUI RGB 24-bit Contone; optional: Adobe PostScript 3 via software RIP
Drivers (included)	PCL 3 GUI Windows driver, Microsoft® Windows drivers (Vista®, XP®, 2000) including support for AutoCAD 2000 and AutoCAD 13 - 14 drivers, USB and ECP drivers, Raster driver for Mac OS X v10.3, v10.4, v10.5
Dimensions (w x d x h)	
Printer	<b>130:</b> 41.3 x 16.3 x 8.7 in (1050 x 415 x 220 mm), <b>130nr:</b> 41.3 x 21 x 8.7 in (1050 x 535 x 220 mm)
Maximum	<b>130:</b> 41.3 x 35.4 x 8.7 in (1050 x 900 x 220 mm), <b>130nr:</b> 41.3 x 40.1 x 8.7 in (1050 x 1020 x 220 mm)
Shipping	46.9 x 21.5 x 19.5 in (1192 x 545 x 493 mm)
Weight	
Printer	<b>130:</b> 48.5 lb (22 kg), <b>130nr:</b> 50.7 lb (23 kg)
Shipping	<b>130:</b> 74.6 lb (33.8 kg), <b>130nr:</b> 81.2 lb (36.8 kg)
What's in the box	
HP Designjet 130 Printer	HP Designjet 130 Printer, printheads (6), ink cartridges (6), input/output tray, input tray cover, HP media samples, documentation and drivers CD, quick reference guide, setup poster, USB cable, power cord
HP Designjet 130nr Printer	HP Designjet 130 Printer, standard roll feed, HP Jetdirect network card, printheads (6), ink cartridges (6), input/output tray, input tray cover, HP media samples, documentation and drivers CD, quick reference guide, setup poster, USB cable, power cord

## Environmental ranges

Operating temperature	41 to 104° F (5 to 40° C)
Recommended operating temperature	59 to 86° F (15 to 30° C)
Storage temperature	-4 to 131° F (-20 to 55° C)
Operating humidity	20 to 80% RH
Recommended humidity	25 to 75% RH
Storage humidity	0 to 95% RH

## Acoustic

Sound pressure, active	50 dB(A)
Sound pressure, standby	37 dB(A)
Sound power, active	6.2 B(A)
Sound power, standby	5.4 B(A)

## Power consumption

Maximum	65 watts
Standby	17 watts
Power requirements	Input voltage 100 to 240 V ac (+/- 10%) auto ranging, 50/60 Hz (+/- 3Hz), 2 amp maximum

## Certification

Safety	IIEC 950-compliant, EU IVD and EN60950 compliant, CSA certified for US and Canada, Mexico NOM-1-NYCE, Argentina IRAM, China CCC, Singapore PSB, Russia VNIIS, Poland ELTEST, Korea KTL
Electromagnetic	Compliance for Class B products, Class A when connected to LANs, EU (EMC Directive), USA (FCC rules), Canada (DoC), Australia (ACA), New Zealand (MoC), China (CCC), Japan (VCCI), Class A for Korea (MIC), Taiwan (BSMI)
ENERGY STAR® qualified models see:	http://www.hp.com/go/energystar

## Warranty

Warranty Support call 1-800-HP INVENT	One-year, next-day onsite warranty
---------------------------------------	------------------------------------

## Ordering information

### Product

C7791C	HP Designjet 130 Printer
C7791F	HP Designjet 130nr Printer

### Accessories

Q1246B	HP Designjet 100/500/800 24-in Stand & Bin
C7797A	HP Designjet Standard Roll Feed (included with 130nr)
Q1264A	HP Designjet 110/120/130 Spindle Accessory
J7934G	HP Jetdirect 620n Fast Ethernet Print Server (included with 130nr)
UC217E	ICC profile (creation of 1 profile)
UC218E	ICC profile (creation of 3 profiles)
Q6643D	EFI Designer Edition 5.1 RIP for HP (XL) Intl

### Ink supplies

C9420A	HP 85 Cyan Printhead
C9421A	HP 85 Magenta Printhead
C9422A	HP 85 Yellow Printhead
C9423A	HP 85 Light Cyan Printhead
C9424A	HP 85 Light Magenta Printhead
C5019A	HP 84 Black Printhead
C9425A	HP 85 Cyan Ink Cartridge (28 ml)
C9426A	HP 85 Magenta Ink Cartridge (28 ml)
C9427A	HP 85 Yellow Ink Cartridge (69 ml)
C9428A	HP 85 Light Cyan Ink Cartridge (69 ml)
C9429A	HP 85 Light Magenta Ink Cartridge (69 ml)
C5016A	HP 84 Black Ink Cartridge (69 ml)

### Media

Q1961A	HP Inkjet Coated Paper, C+, 100 sheets
Q1962A	HP Inkjet Coated Paper, D+, 100 sheets
C6029C	HP Heavyweight Coated Paper 24 in x 100 ft/610 mm x 30.5 m
Q1412A	HP Universal Heavyweight Coated Paper 24 in x 100 ft/610 mm x 30.5 m
C6019B	HP Coated Paper 24 in x 150 ft/610 mm x 45.7 m
Q1404A	HP Universal Coated Paper 24 in x 150 ft/610 mm x 45.7 m
C1860A	HP Bright White Inkjet Paper 24 in x 150 ft/610 mm x 45.7 m
Q1396A	HP Universal Bond Paper 24 in x 150 ft/610 mm x 45.7 m
Q5488A	HP Premium Plus Gloss Photo Paper 24 in x 50 ft/610 mm x 15.2 m
Q5486A	HP Premium Plus Gloss Photo Paper, B+, 25 sheets
Q5487A	HP Premium Plus Gloss Photo Paper, C+, 20 sheets
Q7920A	HP Premium Plus Satin Photo Paper 18 in x 50 ft/458 mm x 15.2 m
Q5491A	HP Premium Plus Satin Photo Paper 24 in x 50 ft/610 mm x 15.2 m
Q1426A	HP Universal High-gloss Photo Paper 24 in x 100 ft/610 mm x 30.5 m
Q1420A	HP Universal Semi-gloss Photo Paper 24 in x 100 ft/610 mm x 30.5 m
Q5492A	HP Matte Photo Paper, B+, 50 sheets
Q1968A	HP Matte Proofing Paper 24 in x 100 ft/610 mm x 30.5 m
Q1967A	HP Matte Proofing Paper, B+, 100 sheets

### HP Care Pack Services

UC744E	HP Installation Service with Network Setup
U3477E	HP 3-Year Next Day Onsite Service
UC217E	HP Color Profiling Service - 1 Profile
UC218E	HP Color Profiling Service - 3 Profiles

For more service options visit: [www.hp.com/go/lookuptool](http://www.hp.com/go/lookuptool)  
HP Care Pack Services call 1-800-633-3600 for service.

HP media sizes and weights available at:  
[www.hp.com/go/designjet/supplies](http://www.hp.com/go/designjet/supplies)



For more information, visit our website at [www.hp.com/go/designjet130](http://www.hp.com/go/designjet130)

© Copyright 2008 Hewlett-Packard Development Company, LP. The information contained herein is subject to change without notice. The only warranties for HP products and services are set forth in the express warranty statements accompanying such products and services. Nothing herein should be construed as constituting an additional warranty. HP shall not be liable for technical or editorial errors or omissions contained herein. Windows, Windows Vista and Windows XP are U.S. registered trademarks of Microsoft Corporation. ENERGY STAR and the ENERGY STAR mark are registered U.S. marks. Adobe and Adobe PostScript 3 are trademarks of Adobe Systems Incorporated. PANTONE and other Pantone, Inc. trademarks are the property of Pantone, Inc. PANTONE Colors displayed herein may not match PANTONE-identified standards. Consult current PANTONE Color Publications for accurate color.

