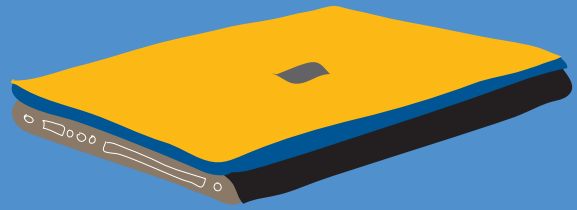


PERFORMANCE YOU EXPECT
POSSIBILITIES YOU'VE IMAGINED

HP Compaq Mobile
Workstations



IT'S TIME TO RECONSIDER YOUR EXPECTATIONS IN A MOBILE COMPUTER.



The latest line of HP Compaq Mobile Workstations—the HP Compaq 8510w and HP Compaq 8710w—introduces compelling new features, such as high-definition resolution for graphics and video/technology, Intel® Core™ 2 Duo Processors,¹ expanded screen size and innovative/customizable HP security systems. Unleash new possibilities for professionals on the move.

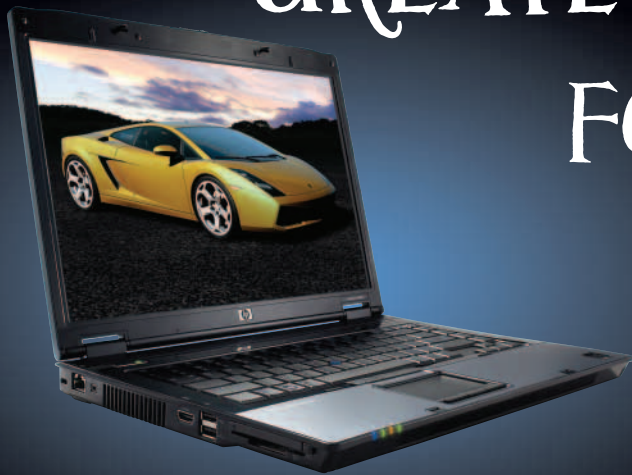
It's time to experience the power.

HP recommends Windows Vista® Business.

Table of contents

| | |
|--|---|
| Power up with HP Mobile Workstations | 3 |
| At the peak of high definition | 3 |
| Contains highly graphic material. | 3 |
| Mobility + manageability. | 4 |
| HP performance tuning framework | 4 |
| Rapid and robust | 4 |
| Solutions for security | 4 |
| Simplify your mobile life | 4 |
| Reliable by nature | 5 |
| New features | 5 |
| Accessories = productivity | 6 |
| Mobile workstations: a powerful pair. | 6 |
| Technical specifications | 7 |

AN EVEN GREATER CAPACITY FOR PROCESSING POWER



HP recommends Windows Vista® Business.

POWER UP WITH HP MOBILE WORKSTATIONS

ISV CERTIFICATIONS

HP performs testing and certifications with top workstation software vendors in a variety of market segments to help verify that the programs you need will run effectively. Some of the vendors HP works with include: Adobe®, Autodesk, AVID, Bentley, Cadence, Dassault Systemes, Discreet, Earth Decision, ERDAS, ESRI, Landmark Graphics, Kydara, Media 100, Mentor, PTC, Red Hat, Softimage, UGS and many others.

HP recommends Windows Vista® Business²

Professionals have come to expect HP Mobile Workstations to wield the force of an office desktop—armed with the power to manipulate complex models, mechanical designs and sophisticated animation—all while providing the freedom of a notebook.

HP has now raised those expectations.

With the new HP Compaq 8510w and HP Compaq 8710w Mobile Workstations, HP introduces an even greater capacity for processing power. You'll experience a true 64-bit computing environment; and with support for up to 4 GB of memory,³ you can run the most demanding applications. HP has also obtained ISV certifications for an extensive range of applications to help enable performance and stability.

Experience the potent visualization power of NVIDIA's and ATI's next-generation graphics controller with high-resolution displays—a feature that can provide an edge to users such as engineers, medical professionals, architects, animators, graphic artists and more.

At the peak of high definition

Develop, record, re-write and play back high-definition video, and burn up to 50 GB of high-definition content on a single dual-layer Blu-ray disc,⁴ when you employ the optional Blu-ray DVD+/RW SuperMulti DL drive. The Blu-ray format offers more than five times the storage capacity of traditional DVDs, and the HDMI connector allows you to connect to high-definition televisions and displays with one convenient cable.

Contains highly graphic material

With NVIDIA's and ATI's next-generation graphics controller, the 8510w and 8710w deliver workstation-class graphics with up to 512 MB of dedicated memory.⁵ When docked, take advantage of Dual Link DVI support that lets you run ultra-high resolution monitors—including newer 30-inch, 2560 x 1600 LCD panels—in their native resolution. HP Mobile Workstations also provide full OpenGL and DirectX 10 support and are fully ISV-certified.

This technology leads to advanced GPU performance; it also provides faster transfer and manipulation of 3D textures, resulting in more interactive visualization of large volumetric datasets.



HP recommends Windows Vista® Business.

RAPID AND ROBUST

Handle more tasks simultaneously with the Intel Core2 Duo processors in HP Mobile Workstations. Dual execution cores also provide a true multi-tasking environment, ideal for anti-virus, spyware, spooling media and other high-resource applications. You'll also get power-saving features that can extend battery life, leading to increased productivity.

SOLUTIONS FOR SECURITY

Managing security for remote workers is a critical need, so HP designed a suite of features called HP ProtectTools that helps guard your mobile workstation, your data and your network connections. The HP ProtectTools portfolio provides layers of application, network and data defense, such as the new Drive Encryption for HP ProtectTools. This innovative tool encrypts all information on the hard drive volume so it becomes unreadable to an unauthorized person.

HP ProtectTools also features integrated biometric fingerprint sensors and smart card readers,⁷ TPM embedded security chips⁸ and an optional HP Privacy Filter that deters unwelcome viewing from the side when a user is operating in limited spaces.

SIMPLIFY YOUR MOBILE LIFE

Mobile computing is a means to boost productivity. HP Mobile Workstations add features to achieve productivity as simply as possible. The new HP QuickLook⁹ tool allows you to quickly browse your e-mail, calendars and contact information with a touch of a button, even if your workstation is turned off. That means convenient access to critical information.

Wireless support includes an 802.11n (draft) WLAN, HP Broadband Wireless¹⁰ and Bluetooth® technologies^{11, 12, 13} to allow users to stay connected in more places. And when you're on the road, HP Mobile Workstations also come with an ambient light sensor, which automatically adjusts panel brightness to the user's surroundings—an energy-saving feature that provides up to an extra hour of run time. And HP Fast Charge Technology allows you to recharge your system battery up to 90 percent within 90 minutes when the system is off.¹⁴

MOBILITY + MANAGEABILITY

Intel® Centrino® Pro⁶ processor technology means users are free to focus on their work while IT administrators are equipped to efficiently manage devices in remote and streamlined ways. Remote manageability also lowers the total cost of operating and makes it possible to strengthen security measures.

HP Mobile Workstations are also shipped with HP Backup and Recovery manager, which can provide data and system file protection to enable fast recovery if the system becomes corrupted. The HP 8710w Mobile Workstation delivers desktop-equivalent familiarity, performance and functionality with the full-sized keyboard with separate numeric keypad. The integrated 6-in-1 media reader enables you to quickly synchronize and store your data with different types of devices or other users.

HP PERFORMANCE TUNING FRAMEWORK

Set up a mobile workstation for enhanced stability and performance, and configure the device to best suit your needs with this simple, Windows®-based interface that's unique to HP. This feature enables availability of the latest graphics cards and drivers, and runs diagnostics of hardware and software to help the computer balance its tasks—from high-end graphics and large applications to digesting large volumes of data.

HP recommends Windows Vista® Business.

RELIABLE BY NATURE

Our HP Mobile Workstations are built to last. With HP Mobile Workstations, you get a reliable and durable mobile workstation that can go the distance. New features include HP DuraKeys and a panel for touch-sensitive controls. The HP 3D DriveGuard system protects valuable data against operational shocks to the device, and overall reliability is reinforced by the rigorous HP Total Test Process.

HP DuraKeys

An innovative feature, HP DuraKeys is a clear coating applied to the keyboard that keeps keys looking newer, longer. According to an independent test, the printed characters on HP DuraKeys are 50 times more resistant to visible wear than keys without this feature.

Touch-sensitive controls

Touch-sensitive controls give you the power to control applications with the touch of a finger. These sleek controls are also durable because they're level to the surface, moisture and particle-resistant, and have no moving parts which all help enhance your notebook's reliability.

HP 3D DriveGuard

HP 3D DriveGuard instinctively helps protect your data by parking the hard drive prior to a shock event, bump or drop to reduce your risk of losing valuable business information. The 3D digital accelerometer with motion detection commands the system to temporarily shut down and protect the hard drive in the event of impact. HP helps protect your critical information by keeping your hard drive parked while on the move. No other major competitor matches the level of protection provided by the HP solution.

HP Total Test Process

Structural reliability is reinforced by a magnesium alloy support structure, metal alloy hinges and the HP Spill-resistant Keyboard, which defends against minor accidental spills. HP Mobile Workstations also benefit from the HP Total Test Process, a rigorous regime in which each HP product receives 95,000 hours of comprehensive analysis. Mechanical tests simulate the opening and closing of a mobile workstation ten times a day for 6 years (25,000 cycles), as well as 7 years of keyboard usage (10 million keystrokes).

Such a strenuous approach to testing can reduce the issues for users in the field and give you confidence that HP Mobile Workstations can execute a wide range of applications and stand up to challenging operating environments.

NEW FEATURES

HP QuickLook⁹—In as little as 10 seconds you can view e-mail, calendar, task and contact information, even when the workstation is turned off. All it takes is a single button for convenient access to critical information.

Dual Link DVI Support—When docked, Dual Link DVI Support enables users to run monitors with resolutions greater than 1920 x 1200, including newer 30-inch, 2560 x 1600 LCD panels. You receive the best possible image quality in native resolution.

HDMI¹³—With High Definition Multimedia Interface, one convenient cable makes it possible to display and play high-definition content from the HP Mobile Workstation on compatible televisions or monitors.

Blu-ray Disc Drive—The optional Blu-ray DVD+/RW SuperMulti DL drive makes it possible to develop, record, re-write and play back high-definition video, and burn up to 50 GB of high-definition content on a single dual-layer Blu-ray disc.

Touch-sensitive controls—A control panel provides easy access to commonly used functions, such as HP QuickLook, wireless on/off and volume control. These solid-state controls have no moving parts to wear out, are resistant to moisture and particles, and light up when activated. Touch-sensitive means it does not require pressure to activate.

HP DuraKeys—A clear coating protects the keys on the HP Mobile Workstation keyboard and resists against wear on the printed characters. HP DuraKeys are 50 times more resistant to wear than keys for competitor notebooks.¹⁶

Drive Encryption for HP Protect Tools—A module encrypts all information on the hard drive volume to make it unreadable to unauthorized eyes. This standard feature provides compliances with numerous privacy and data protection regulations.

HP Privacy Filter¹⁷—An optional feature, the HP Privacy Filter is a removable screen film that narrows the viewing angle without blurring or image distortion. As a result, the user can operate in confined spaces without concern for unwelcome viewing from the side.

Intel Centrino Pro—Intel Active Management Technology empowers IT managers to administer networked mobile devices with built-in remote manageability, proactive security and energy-efficient performance.

HP Wireless—Stay connected at high speed in more places with a fully integrated suite of the latest wireless technologies, including 802.11 (draft) WLAN and Bluetooth[®].

With a wide selection of HP accessories—ranging from docking solutions and adapters to memory upgrades—you can easily expand the capabilities and the flexibility of your mobile workstation.

HP recommends Windows Vista® Business.

ACCESSORIES = PRODUCTIVITY

HP has adopted a common accessory support strategy across notebooks and mobile workstations—providing you with ease of management and support. This common accessory strategy also helps you simplify purchases and deployment as well as reducing spare parts inventory. Your investment is protected because parts can be used by a wide variety of users, and IT resources are increased.

HP Mobile Workstations are compatible with a variety of docking solutions, including HP Advanced Docking Station, HP 3-in-1 NAS Docking Station and HP External MultiBay II. These docking stations provide desktop convenience with full port replication. Connect a monitor, keyboard, mouse and other external devices for convenient cable management.

Battery life and power solutions are essential to productivity whether the user is on the go or at the office desk. Provide power to the workstation wherever you may be with a selection of optional batteries, chargers and adapters, including the HP Extended-Life Battery, HP Ultra-Capacity Battery, HP AC/Auto/Air Adapters and HP Smart AC Adapters.

Increase the capacity of your HP Mobile Workstation with a variety of memory and storage features, such as HP Certified Memory, HP Optical Disk Drives, HP Wireless modules and HP Hard Disk Drives. Security measures can be reinforced with HP Smart Cards, the HP Privacy Filter and a security cable lock. And it's possible to enhance input with an HP Bluetooth PC Card Mouse, HP USB/PS Optical Mouse and the HP Keyboard and Mouse bundles.



MOBILE WORKSTATIONS: A POWERFUL PAIR

The HP Compaq 8510w Mobile Workstation is designed for agility, while built to perform to professional standards.

- A slender package that's light, starting at 6.1 pounds (2.7 kilograms), while just a mere 1.1 inches thick
- Potent graphics that draw from NVIDIA Quadro FX 570M or ATI Mobility FireGL V5600 graphics controllers, each with 256 MB of video memory (512 MB via NVIDIA TurboCache and ATI HyperMemory)
- A high-resolution 15.4-inch diagonal widescreen display
- Intel Core2 Duo processors allow simultaneous use of multiple applications and 64-bit computing environment
- Optional Blu-ray Disc drive to burn and play high-definition video
- HDMI and Dual Link DVI support (available through optional docking)

The HP Compaq 8710w Mobile Workstation combines workstation power, notebook mobility and advanced graphics capabilities that mean high-end computing in any setting.

- Portability in a form factor starting at 7.5 pounds (3.35 kilograms), and thin at just 1.3 inches
- NVIDIA Quadro FX 1600M graphics controller with up to 512 MB of video memory
- Intel Core2 Duo processors allow simultaneous use of multiple applications and 64-bit computing environment
- Support for up to 4 GB of DDR2 667 MHz memory
- A full-size keyboard with integrated number pad
- Optional Blu-ray Disc drive to burn and play high-definition video
- HDMI and Dual Link DVI support (available through optional docking)
- A sleek, high-resolution 17-inch diagonal widescreen display

HP recommends Windows Vista® Business.



Technical specifications

HP COMPAQ 8510W



HP COMPAQ 8710W



| | Description | Description |
|-------------------------|--|--|
| Operating system | <p>Preinstalled: genuine Windows Vista Business 32,² genuine Windows Vista Business 64,² genuine Windows XP Professional, FreeDOS;</p> <p>Supported: genuine Windows Vista Enterprise,² genuine Windows 2000;</p> <p>Certified: SuSe Linux Enterprise Desktop 10</p> | <p>Preinstalled: genuine Windows Vista Business 32,² genuine Windows Vista Business 64,² genuine Windows XP Professional, FreeDOS;</p> <p>Supported: genuine Windows Vista Enterprise,² genuine Windows 2000;</p> <p>Certified: SuSe Linux Enterprise Desktop 10</p> |
| Processor | <p>Intel Core2 Duo (up to 2.4 GHz, 4 MB L2 cache)</p> <p>Intel Core2 Duo (1.8 GHz, 2 MB L2 cache)</p> | <p>Intel Core2 Duo (up to 2.4 GHz, 4 MB L2 cache)</p> <p>Intel Core2 Duo (up to 1.8 GHz, 2 MB L2 cache)</p> |
| Graphics | <p>NVIDIA Quadro FX 570M with 256 MB, OpenGL and DirectX support (512 MB via NVIDIA TurboCache)</p> <p>ATI Mobility FireGL V5600 with 256 MB, OpenGL and DirectX support (512 MB via ATI HyperMemory)</p> | <p>NVIDIA Quadro FX 1600M with 512 MB of video memory, OpenGL and DirectX support</p> |
| Hard drive(s) | <p>SATA 80/120/160 GB 5400 rpm</p> <p>80/120 GB 7200 rpm</p> <p>HP 3D DriveGuard</p> | <p>SATA 120/160 GB 5400 rpm</p> <p>80/120 GB 7200 rpm</p> <p>HP 3D DriveGuard</p> |
| Weight | Starting at 6.1 lb (2.77 kg) with drive | Starting at 7.5 lb (3.35 kg) with drive |
| Power | 8-cell (73 WHr) lithium-ion battery; optional HP (52 WHr) Extended-Life Battery, optional HP (95 WHr) Ultra-Capacity Battery, 120W HP Smart AC Adapter, HP Fast Charge | 8-cell (73 WHr) lithium-ion battery, optional HP (52 WHr) Extended-Life Battery, optional HP (95 WHr) Ultra-Capacity Battery, 120W HP Smart AC Adapter, HP Fast Charge |
| Display | 15.4-inch diagonal: WSXGA + WVA (1680 x 1050 and 16M colors), or WUXGA WVA (1920 x 1200 and 16M colors) | 17-inch diagonal: WSXGA + WVA (1680 x 1050 and 16M colors), WSXGA+WVA BrightView (1680 x 1050 and 16M colors), or WUXGA WVA (1920 x 1200 and 16M colors) |
| Memory | DDR2 SDRAM, 667 MHz, two SODIMM slots supporting dual channel memory, 1,024/2,048 MB | DDR2 SDRAM, 667 MHz, two SODIMM slots supporting dual channel memory, 1,024/2,048 MB |
| Security | HP ProtectTools, TPM Embedded Security Chip 1.2, HP Fingerprint Sensor, Symantec Norton Internet Security, integrated Smart Card Reader; sold separately: Kensington lock, HP Privacy Filter | HP ProtectTools, TPM Embedded Security Chip 1.2, HP Fingerprint Sensor, Symantec Norton Internet Security, integrated Smart Card Reader; sold separately: Kensington lock, HP Privacy Filter |

MAKE PRODUCTIVITY AS SIMPLE AS POSSIBLE



HP recommends Windows Vista® Business.

1. Dual Core is a new technology designed to improve performance of certain software products. Not all customers or software applications will necessarily benefit from use of this technology. Sixty-four-bit computing on Intel architecture requires a computer system with a processor, chipset, BIOS, operating system, device drivers and applications enabled for Intel 64 architecture. Processors will not operate (including 32-bit operation) without an Intel 64 architecture-enabled BIOS. Performance will vary depending on your hardware and software configurations. See www.intel.com/info/em64t for more information.

2. Certain Windows Vista product features require advanced or additional hardware. See www.microsoft.com/windowsvista/getready/hardwarereqs.mspx and www.microsoft.com/windowsvista/getready/capable.mspx for details. Windows Vista Upgrade Advisor can help you determine which features of Windows Vista will run on your computer. To download the tool, visit www.windowsvista.com/upgradeadvisor.

3. Above 3 GB, all memory may not be available due to system resource requirements.

4. Do not copy copyright-protected materials. Intended for creation and storage of your original material and other lawful uses. Double-layer discs can store more data than single-layer discs. Double-layer discs burned with this drive may not be compatible with many existing single-layer DVD drives and players. LightScribe creates a monochrome image. LightScribe media required and sold separately. Note that DVD-RAM cannot read or write to 2.6 GB single-sided/5.2 GB double-sided—version 1.0 media.

5. Shared video memory (UMA) uses part of the total system memory for video performance. System memory dedicated to video performance is not available for other use by programs.

6. Some functionality of Intel Centrino Pro, such as Intel Active management technology and Intel Virtualization technology, requires additional third-party software. Availability of future "virtual appliances" applications is dependent on third-party software providers. Compatibility of this generation of Centrino Pro technology-based hardware with future "virtual appliances" and Microsoft Windows Vista operating system is to be determined.

7. Sold separately or purchased as an optional feature.

8. TPM module disabled where not permitted by law.

9. Only supported with Microsoft Windows Vista operating system.

10. Available on 8510w only.

11. Wireless, internet, and VoIP use require separately purchased service contract. Check with service provider for availability and coverage in your area. Available in select countries only.

12. The specifications for the 802.11n WLAN are draft specifications and are not final. If the final specifications differ from the draft specifications, it may affect the ability of the PC to communicate with other 802.11n WLAN devices.

13. Wireless access point required and is not included. Availability of public wireless access points limited.

14. HP Fast Charge recharges your primary battery up to 90 percent within 90 minutes when the system is off. HP Fast Charge does not apply to 9 cell primary and 12 cell ultra-capacity batteries.

15. HDMI cable not included on all models.

16. In independent testing conducted by Trace Laboratories, HP DuraKeys showed no wear after 250,000 cycles. Some competitor notebooks showed significant wear after only 5,000 cycles.

17. Only available with 15.4-inch monitor.

For more information on HP Mobile Workstations, please contact your HP representative or HP authorized reseller partner, or visit www.hp.com/go/mobileworkstations.

© Copyright 2007 Hewlett-Packard Development Company, L.P. The information contained herein is subject to change without notice. The only warranties for HP products and services are set forth in the express warranty statements accompanying such products and services. Nothing herein should be construed as constituting an additional warranty. HP shall not be liable for technical or editorial errors or omissions contained herein. Bluetooth is a trademark of its proprietor and used by Hewlett-Packard Company under license. Microsoft and Windows are U.S. registered trademarks of Microsoft Corporation. Windows Vista is either a registered trademark or trademark of Microsoft Corporation in the United States and/or other countries. Intel Core and Intel Centrino are trademarks or registered trademarks of Intel Corporation or its subsidiaries in the U.S. and other countries.