

BT93UNIUPS-B-4X4 BOLT DOWN STAND FOR UNILUMIN UPANELS 4x4 DVLED VIDEOWALL

The BT93UNIUPS-B-4X4 is a bolt down mounting solution designed specifically to mount Unilumin Upanels Series DVLED panels in a 4x4 videowall configuration. Interface arms are a 4-row high, single piece construction featuring height adjustment and keyhole mounting points for a quick, simple and precise installation of DVLED panels, without needing to measure and set the location of each cabinet. A high-end aesthetic, anodised aluminium finish and integrated cable management ensures a smart and stylish installation which is quick and simple to install.

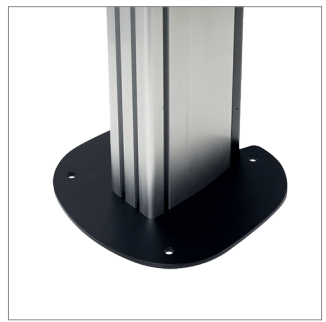
SPECIFICATION	
Panel fixing method	Front and Rear
Colour (columns)	Black or Silver
For indoor use only	

FEATURES

- Designed and configured specifically for Unilumin Upanels Series DVLED panels
- Suitable for front or rear mounting
- Interface arms feature directional arrows to indicate the panel install sequence, aiding a quick and easy installation
- Integrated height adjustment ensures finished installation is perfectly level
- Open frame design for ventilation
- Integrated cable management for tidy install
- Wall, freestanding and mobile versions also available
- All mounting hardware included
- Interface arm positions can be located using the included Upanels specific spacer - no need to measure every time!



Integrated cable management for a tidy install



Small footprint for an unobtrusive installation into confined areas

