



B-TECH AV MOUNTS

**MOUNT RAILS  
 TO UNEVEN  
 WALLS**

# BT8390-WFK5 SYSTEM X™ ADJUSTABLE DEPTH RAIL MOUNTING BRACKET

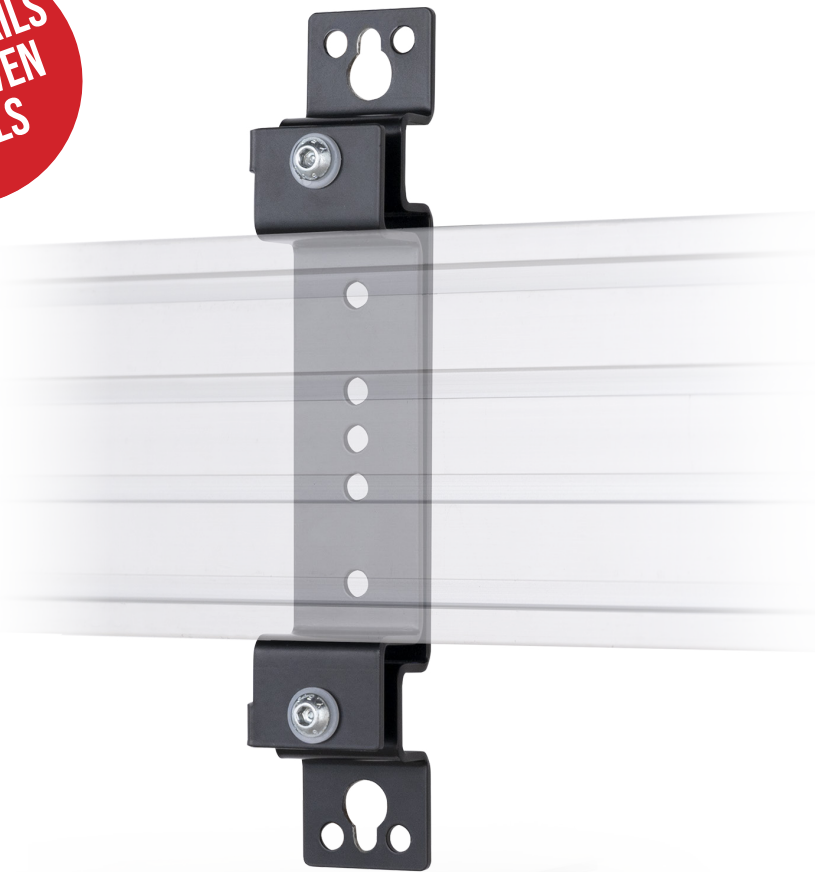
The BT8390-WFK5 is an adjustable bracket designed to fix BT8390 and BT8393 rails to uneven walls for a level installation. The BT8390-WFK5 is also compatible for pole and column mounting using B-Tech's System 2 and System X mounts. Ideal for DVLED mounting, the bracket features keyhole fixings for a quick installation and an easy to use rail depth adjustment enabling pinpoint accuracy that is required for DVLED installations.

### SPECIFICATION

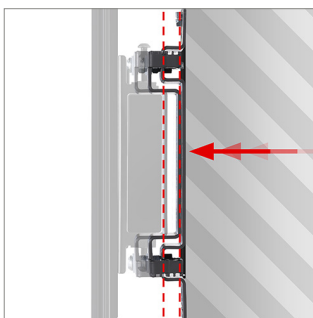
Wall to rear of rail distance	13mm (+/- 5mm)
Dimensions Min.	W: 45mm H: 270mm D: 40mm
Dimensions Max.	W: 45mm H: 270mm D: 50mm
Max load (per pair)	80kg
Brackets supplied per pack	1
Colour	Black

### FEATURES

- Designed to allow BT8390 horizontal and BT8393 vertical I rails to be mounted to walls and poles
- Mounts rail 13mm from the wall with a +/-5mm adjustable depth to ensure a flat to the wall installation
- Can also be pole mounted using B-Tech accessory collars
- Keyhole mounting for easy installation
- Easy adjustment of the depth of the rails with the use of the supplied Hex Key
- Integrated adjustment guides help align rails
- All mounting hardware included
- TUV certified



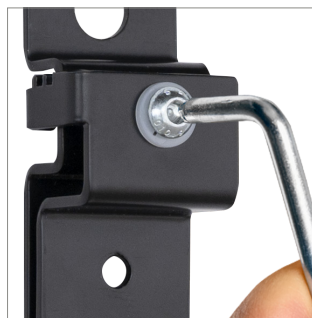
SYSTEM X™



Mounts rail 13mm from the wall with a +/-5mm adjustable depth to ensure a flat to the wall installation



Integrated adjustment guides help align rails

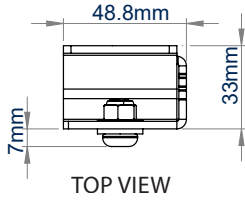


Easy adjustment of the depth of the rails with the use of the supplied Hex Key

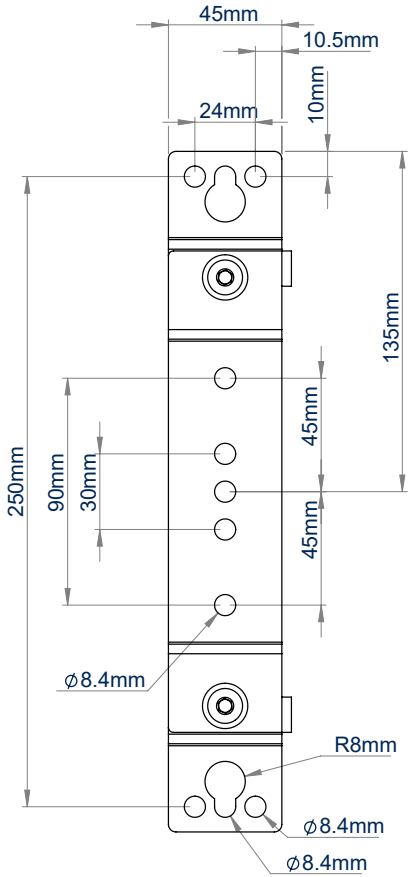


Can also be pole mounted using B-Tech accessory collars

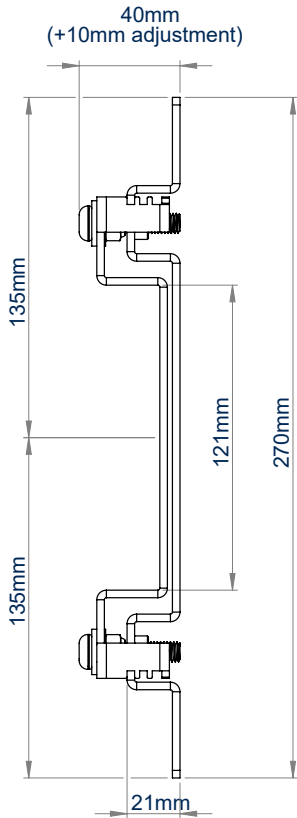




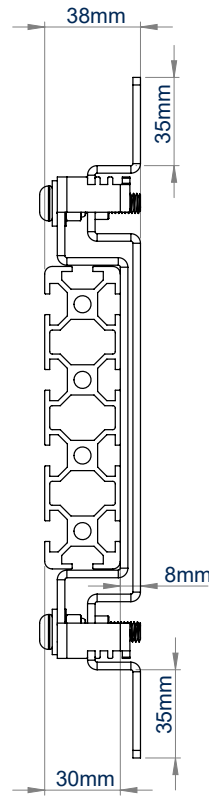
TOP VIEW



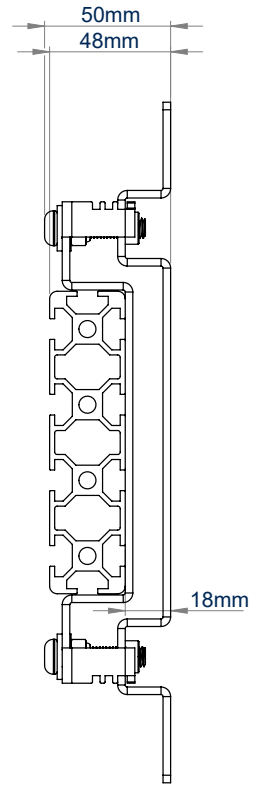
FRONT VIEW



SIDE VIEW



SIDE VIEW WITH BT8390 MOUNTING RAIL MINIMUM DEPTH



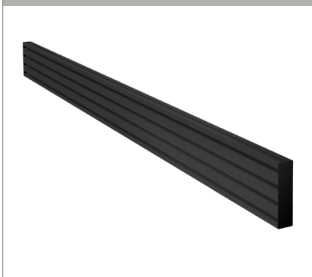
SIDE VIEW WITH BT8390 MOUNTING RAIL MAXIMUM DEPTH

PACKING INFORMATION

COLOUR:	ORDER REF:	EAN CODE:
Black	BT8390-WFK5/B	5019318305245

RELATED PRODUCTS

BT8390-050/070/100/150/175/200/300



Mounting Rails can be fixed to columns, walls or poles using System X components

BT7052



Heavy Duty Ø50mm Accessory Collar designed to attach a variety of mounts and accessories onto B-Tech poles.

BT8390-WFK1



The BT8390-WFK1 Bracket designed to fix BT8390 mounting rails onto walls

BT8390-WFK6



The BT8390-WFK6 Adjustable Height & Depth Rail Bracket designed to fix and fine tune the position of BT8390 rails on walls or vertical support columns. Ideal for videowalls.

© 2015 B-Tech Professional Design & Manufacturing Ltd. All rights reserved. The information in this specification sheet reflects the current technical specifications at the time of print. We reserve the right to change the technical or physical specifications without notice. This B-Tech information is provided as a guide only. B-Tech is not liable for loss or damage caused by improper or negligent installation, use, or repair of any part of this specification. B-Tech Professional Design & Manufacturing Ltd. is not responsible for any loss or damage caused by the use of this specification. B-Tech Professional Design & Manufacturing Ltd. is not responsible for any loss or damage caused by the use of this specification. B-Tech Professional Design & Manufacturing Ltd. is not responsible for any loss or damage caused by the use of this specification. SS-V1.2-BT8390-WFK5-051023