

HP LaserJet Enterprise M806 Printer series



Top printing performance, great value

This A3 HP LaserJet handles big print jobs fast, with extra-large input capacity and versatile paper-handling options. Mobile printing is simple with wireless direct printing¹ and touch-to-print technology². Easy upgrades protect your investment.



2-sided printing



ePrint



Auto on/off



Color touchscreen



Wireless direct

Boost productivity: give workgroups the speed they need.

- Print big jobs fast at up to 56 ppm A4, and easily thanks to the extra-large input capacity of up to 4,600 pages³. Versatile paper handling options include a stapler/stacker/hole punch and booklet maker⁴.
- Simplify tasks with the right touch – equip users to fly through tasks with the large 10.9 cm (4.3-inch) colour touchscreen.
- Simplicity all around – make it easy for all to print with one common driver⁵.
- Don't wait, just print right away and save energy with Instant-on Technology.

Invest once, expand easily.

- Keep a close watch, even from afar — monitor and control printers centrally with HP Web Jetadmin⁶.
- Apply fleet-wide policies to protect all your HP devices with the HP Imaging and Printing Center⁷.
- Safeguard your printers right away with HP Instant-on Security⁸, and protect the sensitive data sent to your printer with the HP High-Performance Secure Hard Disk⁹.
- Prints with a positive ID – authenticate users at the device to help secure print jobs.

Experience greater efficiency with mobile printing.

- Mobile printing is simple with wireless direct printing¹, and enable touch-to-print convenience from a mobile device².
- Let employees print from mobile devices with built-in print capability or HP ePrint app and software¹⁰.
- Printing made Apple® simple – let users print wirelessly from an iPad®, iPhone®, or iPod touch®¹¹.

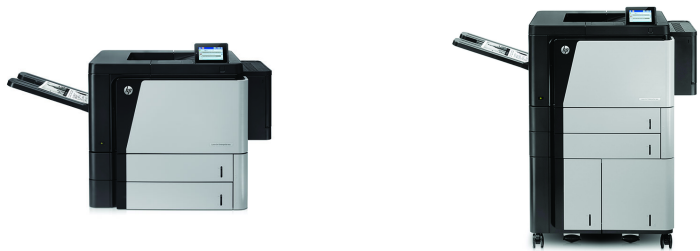
Product walkaround

HP LaserJet Enterprise M806x+ Printer

1. Intuitive 10.9 cm (4.3 in) colortouchscreen control panel
2. 500-page output bin
3. Hardware integration pocket (HIP) for solution integration
4. 100-sheet face-up straight-through output bin
5. Easy front-door access to HP all-in-one toner cartridge
6. Built-in automatic two-sided printing
7. Two 500-sheet input trays support media up to A3 (11 x 17 in)
8. 3,500-sheet high-capacity input tray supports A4/letter media
9. Easy-access USB port to print files directly
10. 100-sheet multipurpose tray handles media up to 220 g/m² (53 lb bond)
11. Right-side doors provide access for clearing jams
12. 800 MHz processor, 1 GB standard memory
13. HP High-Performance Secure Hard Disk
14. Access port for optional Kensington-style lock
15. USB port (for connecting third-party devices)
16. Hi-Speed USB 2.0 printing port
17. HP Jetdirect Gigabit Ethernet print server
18. Foreign interface harness (for connecting third-party devices)



Series at a glance



Model	HP LaserJet Enterprise M806dn Printer	HP LaserJet Enterprise M806x+ Printer
Product number	CZ244A	CZ245A
100-sheet multipurpose tray		Yes
Two 500-sheet A3 input trays		Yes
3,500-sheet A4/letter HCI	Optional	Yes
Booklet maker (CZ285A)*		Optional
Two-bin stapler/stacker (CZ994A)*		Optional
Two-bin stapler/stacker/hole punch (CZ996A)*		Optional
Touch-to-print and wireless direct mobile printing		Optional
HP High-Performance Secure Hard Disk	Not available	Yes

Accessories, Supplies and Support

Supplies	C2H57A HP LaserJet 220V Maintenance/Fuser Kit (200,000 pages)
	CF325X HP 25X High Yield Black Original LaserJet Toner Cartridge (34,500 pages)
Accessories	C3F79A HP LaserJet 3500-sheet High-capacity Input Tray
	C8091A HP Staple Cartridge Refill
	CC383A HP 2-pack 2000-staple Cartridge
	CZ285A HP LaserJet Booklet Maker/Finisher
	CZ994A HP LaserJet Stapler/Stacker
	CZ996A HP LaserJet Stapler/Stacker with 2/4 hole punch
	TOF27A HP LaserJet 500-sheet Output Catch Tray
	TOF54A HP LaserJet 1500-sheet High-capacity Input Tray
Service and Support	J8029A HP Jetdirect 2800w NFC/Wireless Direct Accessory
	U8C59E HP 3 year Next Business Day with Defective Media Retention LaserJet M806 Hardware Support
	U8C60E HP 4 year Next Business Day with Defective Media Retention LaserJet M806 Hardware Support
	U8C61E HP 5 year Next Business Day with Defective Media Retention LaserJet M806 Hardware Support
	U8C75PE HP 1 year Post Warranty Next Business Day with Defective Media Retention LaserJet M806 Hardware Support
	U8C72PE HP 2 year Post Warranty Next Business Day LaserJet Enterprise M806 Hardware Support

Technical specifications

Model	HP LaserJet Enterprise M806dn Printer	HP LaserJet Enterprise M806x+ Printer
Product number	CZ244A	CZ245A
Functions	Print	
Control panel	10.9 cm (4.3") colour LCD with resistive touchscreen; Rotating (adjustable angle) display; Illuminated capacitive Home button (for quick return to the Home menu); Easy access USB; Hardware Integration Pocket	
Print		
Print technology	Laser	
Print speed	Black (A4, normal) : Up to 56 ppm; Black (A4, duplex) : Up to 56 ipm; Black (A3, normal) : Up to 28 ppm;	
First page out	Black (A4, ready) : As fast as 8.5 sec;	
Print resolution	Black (best) : Up to 1200 x 1200 dpi; Technology : HP FastRes 1200 (1200 dpi quality), 600 x 600 dpi with HP Resolution Enhancement technology;	
Monthly duty cycle	Up to 300,000 pages A4; Recommended monthly page volume : 10,000 to 50,000	
Printer smart software features	HP ePrint, Apple AirPrint™, Mopria-certified, HP Auto On/Auto Off Technology, FutureSmart Firmware, Hardware Integration Pocket, Easy Access USB	
Standard print languages	HP PCL 6, HP PCL 5, HP postscript level 3 emulation, native PDF printing (v 1.4)	
Fonts and typefaces	105 internal TrueType fonts scalable in HP PCL; 92 internal scalable fonts in HP Postscript Level 3 emulation (Euro symbol built-in); 1 internal Unicode Fonts (Andale Mono WorldType); 2 Internal Windows Vista 8 Fonts (Calibri, Cambria); additional font solutions available via third-party flash memory cards; HP LaserJet Fonts and IPDS Emulation available at hp.com/go/laserjetfonts	
Print area	Print margins Top: 2.0 mm, Bottom: 2.0 mm, Left: 2.0 mm, Right: 2.0 mm; Maximum print area:	
Duplex printing	Automatic (standard)	

Model	HP LaserJet Enterprise M806dn Printer	HP LaserJet Enterprise M806x+ Printer
Product number	CZ244A	CZ245A
Processor speed	800 MHz	
Connectivity		
Standard	2 Hi-Speed USB 2.0 Host; 1 Hi-Speed USB 2.0 Device; 1 Gigabit Ethernet 10/100/1000T network; 1 Foreign Interface; 1 Hardware Integration Pocket; 2 Internal USB Host	
Optional	HP Jetdirect Z800w NFC & Wireless Direct Accessory, HP Jetdirect Z700w USB Wireless Print Server, HP Jetdirect ew2500 802.11g Wireless Print Server. For more information on HP networking solutions visit hp.com/go/jetdirect	
Wireless	Optional, enabled with purchase of a hardware accessory	
Mobile printing capability	HP ePrint; Apple AirPrint™; Mopria™-certified; Mobile Apps	
Supported network protocols	IPv4/IPv6: Apple Bonjour (AirPrint) compatible, SNMPv1/v2c/v3, HTTP, HTTPS, FTP, TFTP, Port 9100, LPD, IPP, Secure-IPP, WS Discovery, WS Print, IPsec/Firewall; IPv6: DHCPv6, MLDv1, ICMPv6; IPv4: Auto-IP, SLP, Telnet, IGMPv2, BOOTP/DHCP, WINS, IP Direct Mode Management security: SNMPv3, SSL/TLS (HTTPS), IPsec/Firewall; Port authentication (802.1x EAP-PEAP, EAP-TLS)	
Network capabilities	Yes, via built-in Fast Ethernet; Wireless 802.11b/g/n	
Hard disk	Standard, 8 GB Solid State Drive (SSD)	500 GB
Memory	Standard: 1 GB; Maximum: 1.5 GB	
Media handling		
Number of paper trays	Standard: 3 ; Maximum: 5	Standard: 5 ; Maximum: 5
Media types	Paper (bond, colour, letterhead, plain, preprinted, prepunched, recycled, rough), labels, cardstock, transparencies	
Media size	Custom (metric): Tray 1: 98 x 191 to 312 x 470 mm; Tray 2/3: 148 x 210 to 297 x 431.8 mm; Optional High-capacity Input, Tray 4/5: 210 to 297 mm ; Supported (metric): Tray 1: A3, A4, A5, RA3, B4, B5, postcards (JIS double), envelopes (DL, C5, B5); Tray 2/3: A3, A4, A5, B4, B5; Optional High-capacity Input, Tray 4/5: A4 only	Custom (metric): Tray 1: 98 x 191 to 312 x 470 mm; Tray 2/3: 148 x 210 to 297 x 431.8 mm; High-capacity Input, Tray 4/5: 210 to 297 mm ; Supported (metric): Tray 1: A3, A4, A5, RA3, B4, B5, postcards (JIS double), envelopes (DL, C5, B5); Tray 2/3: A3, A4, A5, B4, B5; High-capacity Input, Tray 4/5: A4 only

Model	HP LaserJet Enterprise M806dn Printer	HP LaserJet Enterprise M806x+ Printer
Product number	CZ244A	CZ245A
Media handling	Standard input: Two 500-sheet input trays, 100-sheet multipurpose tray Standard output: 500 sheet face-down tray, 100 sheet face-up tray Optional input: 3500-sheet High-capacity tray	Standard input: Two 500-sheet input trays, 100-sheet multipurpose tray, 3500-sheet High-capacity Input Tray Standard output: 500 sheet face-down tray, 100 sheet face-up tray
Media weight	Tray 1: 60 to 220 g/m ² ; Tray 2/3, 60 to 199 g/m ² ; Optional High-capacity Input, Tray 4/5: 60 to 199 g/m ² ;	Tray 1: 60 to 220 g/m ² ; Tray 2/3, 60 to 199 g/m ² ; High-capacity Input, Tray 4/5: 60 to 199 g/m ² ;
Input capacity	Tray 1: Sheets: 100; Envelopes: 100; Labels: 100 Tray 2: Sheets: 500 Tray 3: Sheets: 500; Labels: small quantities; Optional High-capacity Input tray, Tray 4: 1,500 sheets (A4 only); Tray 5: 2,000 sheets (A4 only) Maximum: Up to 4,600 (A4) and 2,600 (A3) sheets	Tray 1: Sheets: 100; Envelopes: 100; Labels: 100 Tray 2: Sheets: 500 Tray 3: Sheets: 500; Labels: small quantities; High-capacity Input tray, Tray 4: 1,500 sheets (A4 only); Tray 5: 2,000 sheets (A4 only) Maximum: Up to 4,600 (A4) and 2,600 (A3) sheets
Output capacity	Standard: Up to 600 sheets Transparencies: Up to 100 sheets Maximum: Up to 3,000 sheets (with optional stapler/stacker, stapler/stacker with hole punch, or stapler/stacker with booklet maker)	
Compatible operating systems	Windows 10 (32-bit/64-bit), Windows 8 (32-bit/64-bit), Windows 7 (32-bit/64-bit), Windows Vista (32-bit/64-bit), Windows Server 2012 (64-bit), Windows Server 2008 (32-bit/64-bit), Windows Server 2008 R2 (64-bit), Windows Server 2003 (SP1 or higher) (32-bit/64-bit); Mac OS X version 10.6.8, 10.7.5 Lion, 10.8 Mountain Lion; For the latest operating system support see: AirPrint™ (http://support.apple.com/kb/ht4356), Android (http://www.android.com), Citrix and Windows Terminal Services (http://www.hp.com/go/upd), HP ePrint Software Driver (http://www.hp.com/go/eprintssoftware), Linux (http://www.hp.com/go/linux), Novell (http://www.novell.com/iprint), SAP device types (http://www.hp.com/go/sap/drivers), SAP Print (http://www.hp.com/go/sap/print), UNIX (http://www.hp.com/go/unix), UNIX JetDirect (http://www.hp.com/go/jetdirectunix_software)	Windows 10 (32-bit/64-bit), Windows 8.1 (32-bit/64-bit); Windows 8 Basic (32-bit/64-bit); Windows 8 Pro (32-bit/64-bit); Windows 8 Enterprise (32-bit/64-bit); Windows 8 Enterprise N (32-bit/64-bit); Windows 8 Enterprise RT (32-bit only); Windows 7 (32-bit/64-bit) (Including Starter Edition); Windows Vista (32-bit) (Including Starter Edition); Windows Vista (64-bit); Windows Server 2012 R2; Windows Server 2012 (no Software Installer support); Windows Server Win7/2008 R2 (SP1); Windows Server 2008 (Standard Edition); Windows Server 2008 (Enterprise Edition); Windows Server 2008 (32-bit/64-bit) (SP1); Windows Server 2008 (32-bit/64-bit) (SP2); Windows Server 2008 R2 (32-bit/64-bit) (Standard Edition, Enterprise Edition); Windows Server 2008 Server Terminal Services; Windows Server 2008 Server Terminal Services with Citrix XenApp; Windows Server 2003 (Standard Edition); Windows Server 2003 (Enterprise Edition); Windows Server 2003 (32-bit/64-bit) (SP1); Windows Server 2003 (32-bit/64-bit) (SP2); Windows Server 2003 Server Terminal Services with Citrix Presentation Server 4.0; Windows Server 2003 Server Terminal Services with Citrix Presentation Server 4.5; Novell NetWare 6; Novell NetWare 6.5 (SP8 minimum for full Windows Vista, Windows 7); Novell iPrint Client v5.4 for Windows Vista and Windows 7, (x86 and x64); Novell iPrint Support Only; Novell Open Enterprise Server 2 (Linux); Novell Open Enterprise Server 6.5; Other Citrix (Print): Citrix XenApps 6.0, Xen Server 5.6, Xen Desktop 5.5; Other Cluster Support; Mac 10.5; Mac 10.6.8; Mac 10.7.5; Mac 10.8.x; Mac 10.9.x; For Linux OS versions, refer to the HP Linux web site: http://hplipopensource.com/hplip-web/index.html ; Unix HP-UX 11i; IBM AIX 3.2.5 or higher; MPE-iX; Citrix MetaFrame Server; Red Hat Linux 7.x or higher; Solaris 2.5 or higher (SPARC systems only); SuSE Linux 8.x or higher (for Microsoft IPv6 compatibility use Windows 2003, and Windows Vista)
Compatible network operating systems	Windows 10 (32-bit/64-bit), Windows 8.1 (32-bit/64-bit); Windows 8 Basic (32-bit/64-bit); Windows 8 Pro (32-bit/64-bit); Windows 8 Enterprise (32-bit/64-bit); Windows 8 Enterprise N (32-bit/64-bit); Windows 8 Enterprise RT (32-bit only); Windows 7 (32-bit/64-bit) (Including Starter Edition); Windows Vista (32-bit) (Including Starter Edition); Windows Vista (64-bit); Windows Server 2012 R2; Windows Server 2012 (no Software Installer support); Windows Server Win7/2008 R2 (SP1); Windows Server 2008 (Standard Edition); Windows Server 2008 (Enterprise Edition); Windows Server 2008 (32-bit/64-bit) (SP1); Windows Server 2008 (32-bit/64-bit) (SP2); Windows Server 2008 R2 (32-bit/64-bit) (Standard Edition, Enterprise Edition); Windows Server 2008 Server Terminal Services; Windows Server 2008 Server Terminal Services with Citrix XenApp; Windows Server 2003 (Standard Edition); Windows Server 2003 (Enterprise Edition); Windows Server 2003 (32-bit/64-bit) (SP1); Windows Server 2003 (32-bit/64-bit) (SP2); Windows Server 2003 Server Terminal Services with Citrix Presentation Server 4.0; Windows Server 2003 Server Terminal Services with Citrix Presentation Server 4.5; Novell NetWare 6; Novell NetWare 6.5 (SP8 minimum for full Windows Vista, Windows 7); Novell iPrint Client v5.4 for Windows Vista and Windows 7, (x86 and x64); Novell iPrint Support Only; Novell Open Enterprise Server 2 (Linux); Novell Open Enterprise Server 6.5; Other Citrix (Print): Citrix XenApps 6.0, Xen Server 5.6, Xen Desktop 5.5; Other Cluster Support; Mac 10.5; Mac 10.6.8; Mac 10.7.5; Mac 10.8.x; Mac 10.9.x; For Linux OS versions, refer to the HP Linux web site: http://hplipopensource.com/hplip-web/index.html ; Unix HP-UX 11i; IBM AIX 3.2.5 or higher; MPE-iX; Citrix MetaFrame Server; Red Hat Linux 7.x or higher; Solaris 2.5 or higher (SPARC systems only); SuSE Linux 8.x or higher (for Microsoft IPv6 compatibility use Windows 2003, and Windows Vista)	Windows 10 (32-bit/64-bit), Windows 8.1 (32-bit/64-bit); Windows 8 Basic (32-bit/64-bit); Windows 8 Pro (32-bit/64-bit); Windows 8 Enterprise (32-bit/64-bit); Windows 8 Enterprise N (32-bit/64-bit); Windows 8 Enterprise RT (32-bit only); Windows 7 (32-bit/64-bit) (Including Starter Edition); Windows Vista (32-bit) (Including Starter Edition); Windows Vista (64-bit); Windows Server 2012 R2; Windows Server 2012 (no Software Installer support); Windows Server Win7/2008 R2 (SP1); Windows Server 2008 (Standard Edition); Windows Server 2008 (Enterprise Edition); Windows Server 2008 (32-bit/64-bit) (SP1); Windows Server 2008 (32-bit/64-bit) (SP2); Windows Server 2008 R2 (32-bit/64-bit) (Standard Edition, Enterprise Edition); Windows Server 2008 Server Terminal Services; Windows Server 2008 Server Terminal Services with Citrix XenApp; Windows Server 2003 (Standard Edition); Windows Server 2003 (Enterprise Edition); Windows Server 2003 (32-bit/64-bit) (SP1); Windows Server 2003 (32-bit/64-bit) (SP2); Windows Server 2003 Server Terminal Services with Citrix Presentation Server 4.0; Windows Server 2003 Server Terminal Services with Citrix Presentation Server 4.5; Novell NetWare 6; Novell NetWare 6.5 (SP8 minimum for full Windows Vista, Windows 7); Novell iPrint Client v5.4 for Windows Vista and Windows 7, (x86 and x64); Novell iPrint Support Only; Novell Open Enterprise Server 2 (Linux); Novell Open Enterprise Server 6.5; Other Citrix (Print): Citrix XenApps 6.0, Xen Server 5.6, Xen Desktop 5.5; Other Cluster Support; Mac 10.5; Mac 10.6.8; Mac 10.7.5; Mac 10.8.x; Mac 10.9.x; For Linux OS versions, refer to the HP Linux web site: http://hplipopensource.com/hplip-web/index.html ; Unix HP-UX 11i; IBM AIX 3.2.5 or higher; MPE-iX; Citrix MetaFrame Server; Red Hat Linux 7.x or higher; Solaris 2.5 or higher (SPARC systems only); SuSE Linux 8.x or higher (for Microsoft IPv6 compatibility use Windows 2003, and Windows Vista)
Minimum system requirements	Windows: Windows 10, Windows 8, Windows 7 SP1+, Windows Vista, Windows Server 2012 (64-bit), Windows Server 2008, Windows Server 2008 R2 (64 bit), Windows Server 2003 (SP1+); 200 MB available hard disk space, CD-ROM/DVD drive or Internet connection, dedicated USB 1.1/2.0 or network connection (for OS compatible hardware system requirements see http://www.microsoft.com); Mac: Mac OS X v10.6.8, OS X 10.7.5 Lion, OS X 10.8 Mountain Lion; 1 GB of available hard-disk space; CD-ROM or DVD drive, or Internet connection; Dedicated universal serial bus (USB 1.1 or 2.0) or network connection (operating system compatible hardware system requirements see http://apple.com)	Windows: Windows 10, Windows 8, Windows 7 SP1+, Windows Vista, Windows Server 2012 (64-bit), Windows Server 2008, Windows Server 2008 R2 (64 bit), Windows Server 2003 (SP1+); 200 MB available hard disk space, CD-ROM/DVD drive or Internet connection, dedicated USB 1.1/2.0 or network connection (for OS compatible hardware system requirements see http://www.microsoft.com); Mac: Mac OS X v10.6.8, OS X 10.7.5 Lion, OS X 10.8 Mountain Lion; 1 GB of available hard-disk space; CD-ROM or DVD drive, or Internet connection; Dedicated universal serial bus (USB 1.1 or 2.0) or network connection (operating system compatible hardware system requirements see http://apple.com)
Software included	HP PCL 6 Discrete Printer Driver, Mac SW Link to Web (Mac Installer), Windows Installer	HP PCL 6 Discrete Printer Driver, Mac SW Link to Web (Mac Installer), Windows Installer
Security management	Identity Management: Kerberos authentication, LDAP authentication, 1000 user PIN codes, optional HP Access Control and 3rd party advanced authentication solutions (e.g., badge readers); Network: IPsec/firewall with Certificate, Pre-Shared Key, and Kerberos authentication, Supports WJA-10 IPsec configuration Plug-in, 802.1X authentication (EAP-PEAP, EAP-TLS), SNMPv3, HTTPS, Certificates, Access Control List; Data: Storage Encryption, SSL/TLS, Encrypted Credentials; Device: Security lock slot, USB port disablement, Hardware Integration Pocket for security solutions; Security Management: Compatible with HP Imaging & Printing Security Center	Identity Management: Kerberos authentication, LDAP authentication, 1000 user PIN codes, optional HP Access Control and 3rd party advanced authentication solutions (e.g., badge readers); Network: IPsec/firewall with Certificate, Pre-Shared Key, and Kerberos authentication, Supports WJA-10 IPsec configuration Plug-in, 802.1X authentication (EAP-PEAP, EAP-TLS), SNMPv3, HTTPS, Certificates, Access Control List; Data: Storage Encryption, Secure Erase, SSL/TLS, Encrypted Credentials; Device: Security lock slot, USB port disablement, Hardware Integration Pocket for security solutions; Security Management: Compatible with HP Imaging & Printing Security Center
Printer management	HP Web Jetadmin; HP Utility (Mac)	HP Web Jetadmin; HP Utility (Mac)
Dimensions and weight		
Printer dimensions (W x D x H)	Minimum 1095 x 648 x 635 mm; Maximum: 1390 x 648 x 655 mm;	Minimum 1095 x 715 x 1040 mm; Maximum: 1390 x 715 x 1065 mm;
Package dimensions (W x D x H)	856 x 760 x 978 mm	856 x 790 x 1368 mm
Printer weight	76.1 kg	108.4 kg
Package weight	88.84 kg	130.67 kg
Operating environment	Temperature: 10 to 32.5°C; Humidity: 10 to 80% RH	
Storage conditions	Temperature: 0 to 40°C; Humidity: 10 to 90% RH	
Acoustics	Acoustic power emissions: 7.2 B(A); Acoustic pressure emissions: 55 dB(A)	
Power	Requirements: USA, Canada, Mexico, Japan and Taiwan: Input Voltage: 100 to 127 VAC, 50/60 Hz, 11 A; Rest of the world (including EU): Input Voltage: 220 to 240 VAC, 50/60 Hz, 5.5 A (Not dual voltage, power supply varies by part number with # Option code identifier). Not dual voltage, power supply varies by part number with # Option code identifier.; Consumption: 1000 watts (printing), 38 watts (ready), 6.5 watts (sleep), 2.2 watts (Auto On/Auto Off), 0.3 watts (off); Typical Electricity Consumption (TEC): Blue Angel: 3.8 kWh/Week; Energy Star 3.0: 0.832 kWh/Week; Power supply type: Built-in power supply;	Requirements: USA, Canada, Mexico, Japan and Taiwan: Input Voltage: 100 to 127 VAC, 50/60 Hz, 11 A; Rest of the world (including EU): Input Voltage: 220 to 240 VAC, 50/60 Hz, 5.5 A (Not dual voltage, power supply varies by part number with # Option code identifier). Not dual voltage, power supply varies by part number with # Option code identifier.; Consumption: 1000 watts (printing), 38 watts (ready), 6.5 watts (sleep), 2.2 watts (Auto On/Auto Off), 0.3 watts (off); Typical Electricity Consumption (TEC): Blue Angel: 3.8 kWh/Week; Energy Star 3.0: 0.832 kWh/Week; Power supply type: Built-in power supply;
Certifications	CISPR 22:2008/EN 55022:2010 (Class A); EN 61000-3-2:2006 +A1:2009 +A2:2009; EN 61000-3-3:2008; EN 55024:2010; EMC Directive 2004/108/EC with CE Marking (Europe); Other EMC approvals as required by individual countries ENERGY STAR® qualified; EPEAT® Silver; CECP	CISPR 22:2008/EN 55022:2010 (Class A); EN 61000-3-2:2006 +A1:2009 +A2:2009; EN 61000-3-3:2008; EN 55024:2010; EMC Directive 2004/108/EC with CE Marking (Europe); Other EMC approvals as required by individual countries ENERGY STAR® qualified; EPEAT® Silver; CECP
Blue Angel compliant	No; Please refer to the ECI document	Yes, Blue Angel DE-UZ 205—only ensured when using Original HP supplies
Country of origin	Made in Japan	Made in Japan
What's in the box	HP LaserJet M806dn Printer; HP Black LaserJet Toner Cartridge (34,500 pages); Hardware install guide; Support flyer; Warranty card; Printer documentation and driver on CD-ROM; Power cord	HP LaserJet Enterprise M806x+ Printer; HP Black LaserJet Toner Cartridge (34,500 pages); Hardware install guide; Support flyer; Warranty card; Printer documentation and driver on CD-ROM; Power cord
Warranty	One-year, next-business day, onsite warranty. Warranty and support options vary by product, country and local legal requirements. Go to http://www.hp.com/support to learn about HP award winning service and support options in your region.	One-year, next-business day, onsite warranty. Warranty and support options vary by product, country and local legal requirements. Go to http://www.hp.com/support to learn about HP award winning service and support options in your region.

Footnotes

¹ Wireless direct printing may be added as an option to the HP LaserJet Enterprise M806dn and M806x+ CZ245A. Mobile device may require an app or driver. Wireless performance is dependent on physical environment and distance from the printer. For details, see hp.com/go/wirelessprinting.

² Touch-to-print capability may be added as an option to the HP LaserJet Enterprise M806dn and M806x+ CZ245A. Mobile device must support near field communications-enabled printing.

³ Maximum paper capacity of 4,600 sheets is standard in the HP LaserJet Enterprise M806x+ CZ245A and available in the HP LaserJet Enterprise M806dn model with the optional 3,500-sheet high-capacity input tray.

⁴ 2 bin stapler/stacker, 2 bin stapler/stacker/hole punch and booklet maker are optional accessories. Please purchase separately.

⁵ The HP Universal Print Driver is free and available for download at hp.com/go/upd.

⁶ HP Web Jetadmin is free and available for download at hp.com/go/webjetadmin.

⁷ HP Imaging and Printing Security Center must be purchased separately.

⁸ HP Instant-on Security is part of HP Imaging and Printing Security Center, which must be purchased separately.

⁹ HP High-Performance Secure Hard Drive is not available on the HP LaserJet Enterprise M806dn and can't be purchased separately.

¹⁰ Local printing requires mobile device and printer to be on the same network or have a direct wireless connection to printer. Wireless performance is dependent upon physical environment and distance from access point.

Wireless operations are compatible with 2.4 GHz operations only. Remote printing requires an Internet connection to an HP Web-connected printer. App or software and HP ePrint account registration may also be required.

Wireless broadband use requires separately purchased service contract for mobile devices. Check with service provider for coverage and availability in your area. See hp.com/go/mobileprinting for more details.

¹¹ Supports OS X® Lion, OS X Mountain Lion, and the following devices running iOS 4.2 or later: iPad® (all models), iPhone® (3GS or later), and iPod touch® (third generation or later). Works with HP's AirPrint-enabled printers and requires the printer be connected to the same network as your OS X or iOS device. Wireless performance is dependent on physical environment and distance from the access point. OS X, iPad, iPhone, and iPod touch are trademarks of Apple® Inc., registered in the United States and other countries. AirPrint™ and the AirPrint logo are trademarks of Apple Inc.

¹² An FCC Class A emissions compliant device meets the less stringent (higher) levels of emissions allowed by the FCC for a product operation in a commercial environment. An FCC class A device cannot be marketed for use in a residential environment and an FCC class A device should not be purchased for use in a residential environment due to the increased risk of interference to radio communications.



<http://www.hp.com/uk>

© Copyright 2021 HP Development Company, L.P. The information contained herein is subject to change without notice. The only warranties for HP products and services are set forth in the express warranty statements accompanying such products and services. Nothing herein should be construed as constituting an additional warranty. HP shall not be liable for technical or editorial errors or omissions contained herein.

Published in EMEA April 2021

