

Micro Hi-Fi System

MCM7 • MCM8



MCM7



MCM8



PHILIPS

Important notes for users in the U.K.

Mains plug

This apparatus is fitted with an approved 13 Amp plug. To change a fuse in this type of plug proceed as follows:

- 1 Remove fuse cover and fuse.
- 2 Fix new fuse which should be a BS1362 5 Amp, A.S.T.A. or BSI approved type.
- 3 Refit the fuse cover.

If the fitted plug is not suitable for your socket outlets, it should be cut off and an appropriate plug fitted in its place.

If the mains plug contains a fuse, this should have a value of 5 Amp. If a plug without a fuse is used, the fuse at the distribution board should not be greater than 5 Amp.

Note: The severed plug must be disposed of to avoid a possible shock hazard should it be inserted into a 13 Amp socket elsewhere.

How to connect a plug

The wires in the mains lead are coloured with the following code: blue = neutral (N), brown = live (L).

- As these colours may not correspond with the colour markings identifying the terminals in your plug, proceed as follows:
 - Connect the blue wire to the terminal marked N or coloured black.
 - Connect the brown wire to the terminal marked L or coloured red.
 - Do not connect either wire to the earth terminal in the plug, marked E (or $\frac{1}{2}$) or coloured green (or green and yellow).

Before replacing the plug cover, make certain that the cord grip is clamped over the sheath of the lead - not simply over the two wires.

Copyright in the U.K.

Recording and playback of material may require consent. See Copyright Act 1956 and The Performer's Protection Acts 1958 to 1972.

Italia

DICHIARAZIONE DI CONFORMITA'

Si dichiara che l'apparecchio MCM7, MCM8, Philips risponde alle prescrizioni dell'art. 2 comma 1 del D.M. 28 Agosto 1995 n. 548.

Fatto a Eindhoven

Philips Consumer Electronics
Philips, Glaslaan 2
5616 JB Eindhoven, The Netherlands

Norge

Typeskilt finnes på apparatens underside.

Observer: Nettbryteren er sekundert innkoplet. Den innebygde nettdelen er derfor ikke frakoplet nettet så lenge apparatet er tilsluttet nettkontakten.

For å redusere faren for brann eller elektrisk støt, skal apparatet ikke utsettes for regn eller fuktighet.

CAUTION

Use of controls or adjustments or performance of procedures other than herein may result in hazardous radiation exposure or other unsafe operation.

VAROITUS

Muiden kuin tässä esitettyjen toimintojen säädön tai asetusten muutto saattaa altistaa vaaralliselle säteilylle tai muille vaarallisille toiminnoille.

DK

Advarsel: Usynlig laserstråling ved åbning når sikkerhedsafbrydere er ude af funktion. Undgå udsættelse for stråling.

Bemærk: Netafbryderen er sekundært indkoblet og afbryder ikke strømmen fra nettet. Den indbyggede netdel er derfor tilsluttet til lysnettet så længe netstikket sidder i stikkontakten.

S

Klass 1 laserparat

Varning! Om apparaten används på annat sätt än i denna bruksanvisning specificerats, kan användaren utsättas för osynlig laserstrålning, som överskrider gränsen för laserklass 1.

Observera! Stömbrytaren är sekundärt kopplad och bryter inte strömmen från nätet. Den inbyggda nätdelen är därför ansluten till elnätet så länge stickproppen sitter i vägguttaget.

SF

Luokan 1 laserlaite

Varoitus! Laitteen käyttäminen muulla kuin tässä käyttöohjeessa mainitulla tavalla saattaa altistaa käyttäjän turvallisuusluokan 1 ylittävälle näkymättömälle lasersäteilylle.

Oikeus muutoksiin varataan. Laite ei saa olla alttiina tippu-ja roiskevedelle.

Huom. Toiminnanvalitsin on kytketty toisiopuolelle, eikä se kytke laitetta irti sähköverkosta. Sisäänrakennettu verkko-osa on kytkettynä sähköverkkoon aina silloin, kun pistoke on pistorasiassa.

Energy Star

As an ENERGY STAR® Partner, Philips has determined that this product meets the ENERGY STAR® guidelines for energy efficiency.



Index

English 6

Français 26

Español 46

Deutsch 66

Nederlands 86

Italiano 106

Svenska 126

Dansk 146

Suomi 166

Português 186

Ελληνικά 206

English

Français

Español

Deutsch

Nederlands

Italiano

Svenska

Dansk

Suomi

Português

Ελληνικά

General Information

Supplied accessories	7
Environmental information	7
Care and safety information	7

Functional Overview

Main unit and remote control	8–9
Control buttons available on the remote only	9

Connections

Step 1: Connecting FM/AM antennas	10
Step 2: Connecting the speakers	11
Step 3: Connecting the AC power cord	11
Step 4: Inserting batteries into the remote control	11
Using the remote control to operate the system	11

Basic Operations

Switching on/off	12
Switching to an active mode	12
Switching to Eco Power standby mode	12
Switching to standby mode (view clock)	12
Demonstration mode	12
Setting the clock	12
Dimming system's display screen	13
Volume control	13
Sound control	13
Incredible Surround	13
Bass/Treble	13
Natural (Flat) sound	13

Disc Operations

Playable discs	14
Loading disc	14
Basic playback controls	14
Playing an MP3 disc	15
Repeat and Shuffle	15
Repeat play	15
Random play	15
Programming the disc tracks	16
Checking the programme	16
Clearing the programme	16

Tuner Operations

Tuning to radio stations	17
Presetting radio stations	17
Using the Plug and Play	17
Automatic presetting	18
Manual presetting	18
Selecting a preset radio station	18
Deleting a preset radio station	18
RDS	18
Scrolling through RDS information	18
Setting the RDS clock	18
NEWS	19
Switching on NEWS function	19

Tape Operations/Recording

Playing a tape	20
General information on recording	20
Preparation for recording	21
One touch recording	21
CD Synchronised start recording	21

Timer Operations

Timer setting	22
Activating/Deactivating the timer	22
Checking the timer setting	22
Temporarily deactivating the wake up timer	23
Setting the Sleep Timer	23

Other Connection

Listening to an external source	23
---------------------------------------	----

Specifications

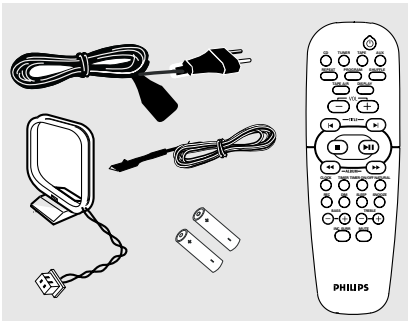
Troubleshooting

This product complies with the radio interference requirements of the European Community.

Refer to the type plate on the rear or bottom of the system for identification and supply ratings.

For users in the U.K.: please follow the instructions on page 2.

Supplied accessories



- Remote control and two AA batteries.
- AM loop antenna
- FM wire antenna
- AC power cord

Environmental information

All unnecessary packaging has been omitted. We have tried to make the packaging easy to separate into three materials: cardboard (box), polystyrene foam (buffer) and polyethylene (bags, protective foam sheet).

Your system consists of materials which can be recycled and reused if disassembled by a specialised company. Please observe the local regulations regarding the disposal of packaging materials, exhausted batteries and old equipment.

Care and safety information

Avoid high temperatures, moisture, water and dust

- Do not expose the system, batteries or discs to humidity, rain, sand or excessive heat (caused by heating equipment or direct sunlight). Always keep the disc tray closed to avoid dust on the lens.

Avoid condensation problem

- The lens may cloud over when the system is suddenly moved from cold to warm surroundings, making it impossible to play a disc. Leave the system in the warm environment until the moisture evaporates.

Do not block the vents

- In a cabinet, allow about 10cm (4 inches) of free space all around the system for adequate ventilation.

Care of disc

- To clean a CD, wipe it in a straight line from the centre towards the edge using a soft, lint-free cloth. A cleaning agent may damage the disc!
- Write only on the printed side of a CDR(W) and only with a soft felt-tipped pen.
- Handle the disc by its edge, do not touch the surface.

Care of the cabinet

- Use a soft cloth slightly moistened with a mild detergent solution. Do not use a solution containing alcohol, spirits, ammonia or abrasives.

Finding a suitable location

- Place the system on a flat, hard, and stable surface.

Built-in safety circuit

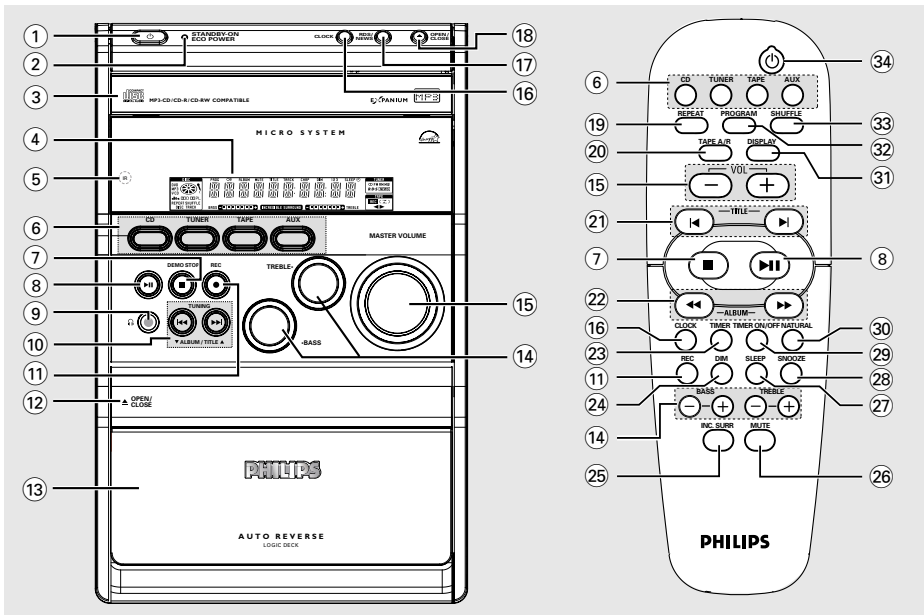
- Under extreme conditions, this system may switch to standby mode automatically. If this happens, let the system cool down before reusing it.

Cleaning the Heads and the Tape Paths

- To ensure good recording and playback quality, clean the heads, the capstan(s), and pressure roller(s) after every 50 hours of tape operation.
- Use a cotton swab slightly moistened with cleaning fluid or alcohol.
- You also can clean the heads by playing a cleaning tape once.

Functional Overview

English



Main unit and remote control

- ① **STANDBY ON**

 - Switches to Eco Power standby mode or turns on the system.
 - *Switches to standby mode.

- ② **ECO POWER indicator**

 - Lights up when the system is in Eco Power standby mode.

- ③ **Disc tray**
- ④ **Display screen**
- ⑤ **iR**

 - Point the remote control towards this sensor.

- ⑥ **CD / TUNER / TAPE / AUX**

 - Selects the relevant active mode.
 - **CD:** switches to CD mode.
 - **TUNER:** toggles between FM and MW band.
 - **TAPE:** switches to Tape mode.
 - **AUX:** toggles between AUX and CDR mode.

- ⑦ **DEMO STOP**

 - Exits an operation.
 - **CD:** stops playback or clears a programme.
 - **TUNER:** *erases a preset radio station.
 - **TAPE:** stops playback or recording.

(only on the main unit)

 - *Turns on/off the demonstration mode.

- ⑧ **▶ ||**

 - **CD:** starts/pauses playback.
 - **TAPE:** starts playback or selects other side of the tape during playback.
 - **CLOCK:** toggles between hour and minutes setting.

(only on the main unit)

 - **TUNER:** *enters Plug & Play mode and/or starts preset radio station installation.

- ⑨

 - Plug in the headphones jack. The speakers output will be cancelled.

* = Press and hold the button for more than two seconds.

10 TUNING ◀◀ ▶▶ (▼ALBUM/TITLE▲)

- **CD:** *searches backward/forward or selects a track.
- **MP3:** *selects an album or selects a title (track).
- **TUNER:** tunes the radio frequency up/down.
- **TAPE:** rewind or fast forward.
- **CLOCK:** sets the hours or minutes.

11 REC

- *starts recording on a tape.

12 OPEN/CLOSE

- Opens/closes the tape deck door.

13 Tape deck

14 BASS/TREBLE (+ -)

- Selects a desired BASS (low tone) or TREBLE (high tone) level.

15 MASTER VOLUME (VOL + -)

- Adjusts the volume level.

16 CLOCK

- Switches to clock display mode or enter clock setting mode.

17 RDS/NEWS

- In tuner mode, selects RDS information.
- In other modes, turns on/off news.

18 OPEN/CLOSE ▲

- Opens/closes the disc tray.

Control buttons available on the remote only

19 REPEAT

- Repeats a track/disc/all programmed tracks.

20 TAPE A/R

- Selects the desired tape playback modes : one side, both sides or auto replay.

21 ◀ ▶

- **MP3:** selects an MP3 title (track).
- **CD:** selects a track.
- **TUNER:** selects a preset radio station.
- **TAPE:** selects other side of the tape.

22 ◀ ▶

- **MP3:** selects an album from MP3 disc.
- **CD:** searches backward/forward.
- **TUNER:** tunes the radio frequency up/down.
- **TAPE:** rewind or fast forward.
- **CLOCK:** sets the hours or minutes.

23 TIMER

- Displays the timer setting or enter timer setting mode.

24 DIM

- Selects different levels of brightness for display panel.

25 INC. SURR.

- Turns on/off the incredible surround sound effect.

26 MUTE

- Mutes or restores the volume.

27 SLEEP

- Sets the sleep timer function.

28 SNOOZE

- Temporarily deactivate the wake up timer.

29 TIMER ON/OFF

- Turns on/off timer function.

30 NATURAL

- Selects flat sound effect.

31 DISPLAY

- Displays the album and title name for MP3 disc.

32 PROGRAM

- **CD:** starts or confirms tracks programming.
- **TUNER:** starts *automatic/manual preset programming.
- **CLOCK:** selects 12- or 24-hour clock display.

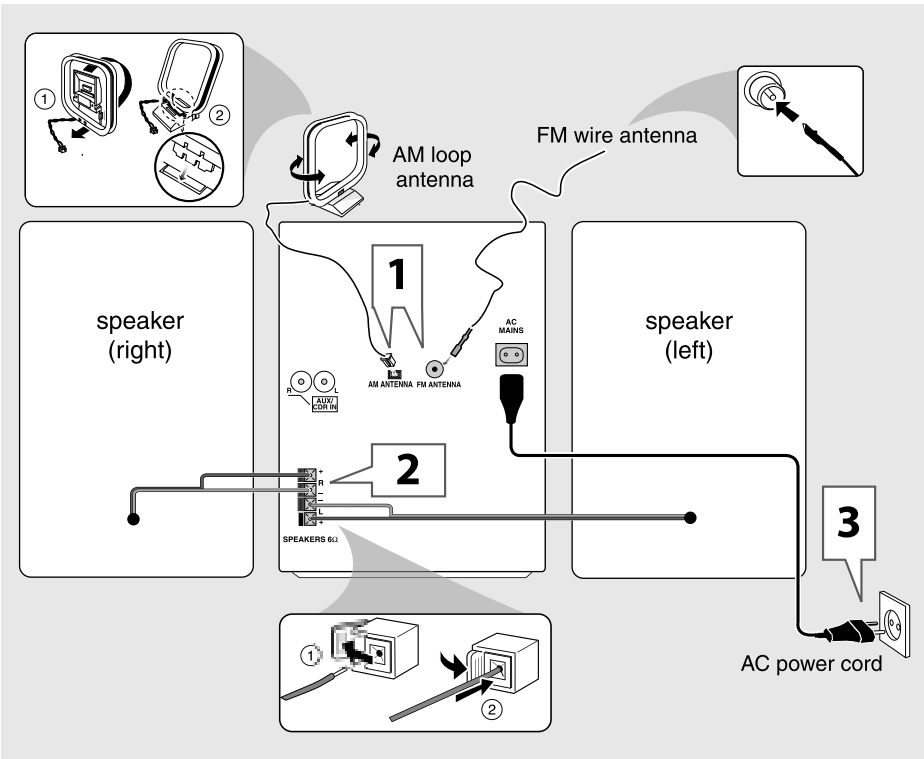
33 SHUFFLE

- Turns on/off random play mode.

34 ⏻

- Switches to Eco Power standby mode.
- *Switches to standby mode.

* = Press and hold the button for more than two seconds.



WARNING!

- Use only the supplied speakers. The combination of the main unit and speakers provide the best sound. Using other speakers can damage the unit and sound quality will be negatively affected.
- Never make or change connections with the power switched on.
- Connect the AC power cord to the power outlet only after you have finished hooking up everything.

Step 1: Connecting FM/AM antennas

- Place the AM loop antenna on a shelf or attach it to a stand or wall.
- Extend the FM antenna and fix its ends to the wall.
- Adjust the position of the antennas for optimal reception.
- Position the antennas as far as possible from a TV, VCR or other radiation source to prevent unwanted noise.
- For better FM stereo reception, connect external FM antenna.

Step 2: Connecting the speakers

Connect the speaker wires to the SPEAKERS terminals, right speaker to "R" and left speaker to "L", coloured (marked) wire to "+" and black (unmarked) wire to "-". Fully insert the stripped portion of the speaker wire into the terminal as shown.

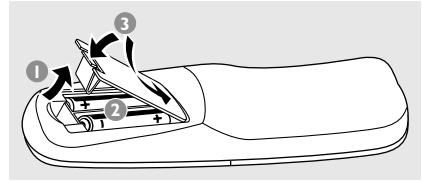
Helpful Hint:

- Ensure that the speaker cables are correctly connected. Improper connections may damage the system due to short-circuit.
- Do not connect more than one speaker to any one pair of + / - speaker terminals.

Step 3: Connecting the AC power cord

"AUTO INSTALL - PRESS PLAY" may appear on the display panel when the AC power cord is plugged into the power outlet for the first time. Press ►|| on the main unit to store all available radio stations or press ■ to exit (refer to "Tuner Operations").

Step 4: Inserting batteries into the remote control



- 1 Open the battery compartment cover.
- 2 Insert two batteries type R06 or AA, following the indications (+ -) inside the compartment.
- 3 Close the cover.

Using the remote control to operate the system

- 1 Aim the remote control directly at the remote sensor (iR) on the main unit.
- 2 Select the source you wish to control by pressing one of the source select keys on the remote control (for example CD,TUNER).
- 3 Then select the desired function (for example ►||, ◀, ▶).

CAUTION!

- Remove batteries if they are exhausted or will not be used for a long time.
- Do not use old and new or different types of batteries in combination.
- Batteries contain chemical substances, so they should be disposed of properly.

Basic Operations

Switching on/off

Switching to an active mode

- Press **CD, TUNER, TAPE** or **AUX**.

Switching to Eco Power standby mode

- Press **⏻**.
 - ECO POWER button lights up.
 - The display screen will go blank.

Switching to standby mode (view clock)

- Press and hold **⏻**.
 - The clock appears.
 - While in standby mode, pressing **CLOCK** button will switch the system to Eco Power standby mode.

Helpful Hint:

– Before switching the system to Eco Power standby or standby mode, make sure you have deactivated the the demonstration mode.

Demonstration mode

If the demonstration mode is active, whenever you switch the system to Eco Power standby or standby mode, it will begin showing the various features offered by the system.

To activate the demonstration

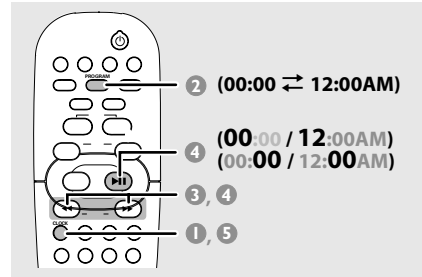
- In Eco Power standby/standby mode, press and hold **■** on the main unit until "DEMO ON" appears.

To deactivate the demonstration

- Press and hold **■** on the main unit until "DEMO OFF" appears.

Setting the clock

The clock can be set in either 12-hour or 24-hour mode ("11:59 PM" or "23:59" for example).



- 1 Press and hold **CLOCK** until the clock time starts flashing.
- 2 Press **PROGRAM** repeatedly to change between 12-hour and 24-hour clock mode.
- 3 Press **◀** or **▶** repeatedly to set the hour.
- 4 Press **⏸** to change to minutes setting, then press **◀** or **▶** repeatedly to set the minutes.
- 5 Press **CLOCK** again to store the setting.
 - The clock will start working.

To view the clock time in any active mode

- Press **CLOCK once**.
 - The clock is displayed for a few seconds.

Helpful Hints:

– The clock setting will be erased when the system is disconnected from the power supply.
 – The system will exit clock setting mode if no button is pressed within 90 seconds.
 – To set the clock automatically through the time information in the RDS signal, refer to "Tuner Operations – Setting the RDS clock".

Dimming system's display screen

You can select the desired brightness for the display panel.

- In any active mode, press **DIM** repeatedly to select DIM 1, DIM 2, DIM 3 or DIM OFF display.
→ **DIM** shows on the display screen, except DIM OFF mode.

Volume control

- Adjust **MASTER VOLUME** (or press **VOL + / -** on remote) to increase or decrease the sound level.
→ "**VOL MUTE**" is the minimum volume level and "**0 dB**" is the maximum volume level.
- **To switch off the volume temporarily**
 - Press **MUTE** on the remote.
→ Playback will continue without sound and "**MUTE**" appears.
 - To restore the volume, press MUTE again or increase the volume level.

Sound control

Incredible Surround

The Incredible Surround magnifies the virtual distance between the front speakers for an incredibly wide, enveloping, stereo effect.

- Press **INC. SURR.** repeatedly.
→ If activated, **INCREDIBLE SURROUND** shows on the display.
→ If deactivated, "**IS OFF**" appears.

Bass/Treble

The BASS (low tone) and TREBLE (high tone) feature enables you to define the sound-processor settings.

- Adjust **BASS** or **TREBLE** (or press **BASS + - / TREBLE + -** on the remote) repeatedly to select the desired Bass or Treble level.
→ "**BASS XX**" or "**TREBLE XX**" appears.
"XX" denotes the level as follows :
-3 → -2 ... → 0 → 1 ... → +2 → +3 ...

Natural (flat sound)

This feature allows you to temporarily switch off the sound setting (e.g. Incredible Surround - OFF, Bass/Treble setting - 0dB).

- Press **NATURAL** on the remote.
→ Pressing the same button will restore the previous sound setting.
→ Pressing INC. SURR or BASS/TREBLE button will turn off the natural sound mode.

Disc Operations

IMPORTANT!

- This system is designed for regular discs. Therefore, do not use any accessories such as disc stabiliser rings or disc treatment sheets, etc., as offered on the market, because they may jam the changer mechanism.
- Do not load more than one disc onto the tray.

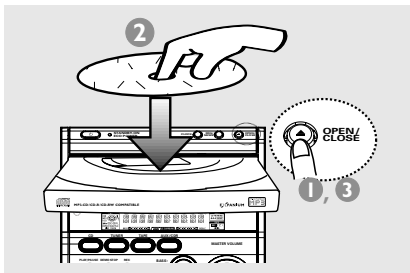
Playable discs

This system is able to play:

- All pre-recorded audio CDs
- All finalised audio CDR and audio CDRW discs
- MP3-CDs (CD-ROMs with MP3 tracks)



Loading disc



- 1 Press **OPEN/CLOSE** ▲ button to open the disc tray.
- 2 Load a disc with the label side is facing up. For double-sided discs, load the side you want to play face up.
- 3 Press **OPEN/CLOSE** ▲ button again to close the disc tray.
→ "READING" is displayed. The total number of tracks and the playing time will appear on the display.

Helpful Hint

- To ensure good system performance, wait until the disc tray completely read the disc before proceeding.

Basic playback controls

Unless stated, all operations described are based on Remote Control use.

To start playback

- Press ►||

To select a desired track

- Press ◀ or ▶ repeatedly until the desired track is displayed.
→ During random play (shuffle mode), pressing ◀ will not affect the current playback.

To search for a particular passage during playback

- Press and hold ◀◀ or ▶▶ and release it when the desired passage is located.
→ During searching, the volume will reduce. For MP3 disc, the volume will mute.

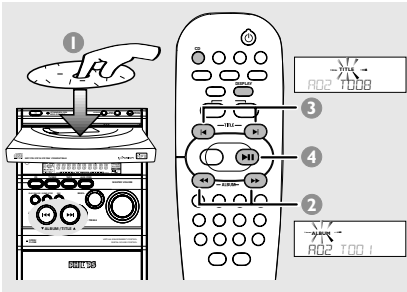
To interrupt playback

- Press ►||
→ To resume normal playback, repeat the above.

To stop playback

- Press ■.
→ If the system remains in stop mode for 30 minutes, it will switch to Eco Power standby mode.

Playing an MP3 disc



- 1 Load an MP3 disc.
 - The disc reading time may exceed 10 seconds due to the large number of songs compiled into one disc.
 - "MP3" is displayed. 00 is the current album number and 0001 is the current title number.
- 2 Press ◀▶ (or press and hold ◀◀▶▶ on the system) to select a desired album.
- 3 Press ◀▶ (or press ◀◀▶▶ on the system) to select a desired title.
- 4 Press ▶|| to start playback.
- During playback, press **DISPLAY** to show the album and title name.

Supported MP3 disc formats:

- ISO9660, Joliet, UDF 1.5
- Maximum title number : 999 (depending on filename length)
- Maximum album number : 99
- Supported sampling frequencies: 32 kHz, 44.1 kHz, 48 kHz
- Supported Bit-rates : 32~256 (kbps), variable bitrates
- ID3 tags : V1.1, V2.2, V2.3, V2.4

Repeat and Shuffle

You can select and change the various play modes before or during playback.

Repeat play

- 1 Press **REPEAT** on the remote repeatedly to select :

REPEAT	REPEAT	REPEAT	PROG	REPEAT	PROG
TRACK	DISC	TRACK	TRACK	REPEAT	PROG
(A)	(B)	(C)	(D)		

- (A) – to repeat playback of the current track.
- (B) – to repeat playback of the current disc.
- (C) – to repeat playback of the current programmed track (only if the programme mode is active)
- (D) – to repeat playback of all the programmed tracks (only if the programme mode is active)

- 2 To resume normal playback, press **REPEAT** until "OFF" appears.

Random play

- Press **SHUFFLE** on the remote to turn on/off the shuffling mode.
 - If activated, **SHUFFLE** shows on the display and the repeat mode (if any) will be cancelled.
 - If programme mode is active, only the programmed tracks will be played in random order.

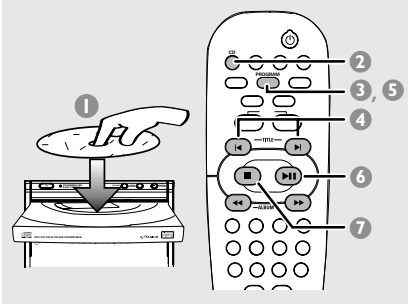
Helpful Hint:

- Pressing the **OPEN/CLOSE** button will cancel all repeat and shuffling modes.

Disc Operations

Programming the disc tracks

Programming tracks is possible when playback is stopped. Up to 99 tracks can be stored in the memory in any order.



- 1 Load the desired disc on the disc tray (refer to "Loading disc").
- 2 Press **CD** to select a disc.
- 3 Press **PROGRAM** to start programming.
→ **PROG** starts flashing.
- 4 Press **◀** or **▶** repeatedly to select the desired track.
- For MP3 disc, press **◀◀** / **▶▶** and **◀** / **▶** to select the desired album and title for programming.
- 5 Press **PROGRAM** to store.
- Repeat **steps 4~5** to select other tracks.
→ If you attempt to programme more than 99 tracks, "PROGRAM FULL" appears.
- 6 To start programme play, press **▶||**
- 7 To stop playback or to end the programming, press **■ once**.
→ **PROG** stays and the programme mode remains active.

Helpful Hints:

- If the total playing time reached 100 minutes or if one of the programmed tracks has a number greater than 30, then "-:-:-:-" will appear instead of the total playing time.
- The system will exit programming mode if no button is pressed within 20 seconds.

Checking the programme

- 1 Stop playback and press **◀** or **▶** repeatedly.
- 2 Press **▶||** to start playback from the current programmed track.

Clearing the programme

- Stop playback, then press **■** to clear the programme.
- OR**

Press the **OPEN/CLOSE ▲** button of the disc tray.

→ **PROG** disappears from the display and "PROGRAM CLEARED" appears.

Helpful Hint:

- If the system is disconnected from the power supply or you switch to other source mode, the programme will be erased.

IMPORTANT!

Make sure the FM and MW antennas are connected.

Tuning to radio stations

- 1 Press **TUNER** to enter tuner mode.
To select another waveband (FM or MW), press **TUNER** again.
- 2 Press and hold **◀▶** until the frequency indication starts to change, then release.
→ The system automatically tunes to the next strong signal radio reception.
→ **∞** lights up for FM stereo reception.
→ **RDS** lights up for RDS station (in FM band only).

For tuning to a weak signal station

- Press **◀▶** briefly and repeatedly until an optimal reception is found.

Presetting radio stations

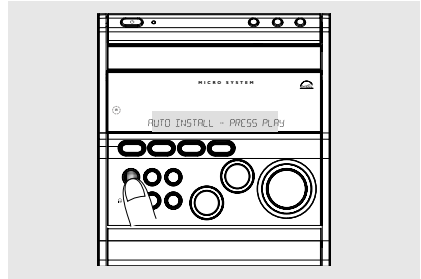
You can store up to 40 preset radio stations in the memory, starting from FM and followed by MW bands.

Helpful Hints:

- The system will exit presetting mode if no button is pressed within 20 seconds.
- If no stereo frequency is detected during Plug and Play, "CHECK ANTENNA" appears.

Using the Plug and Play

Plug and Play allows you to store all available radio stations automatically.



- 1 Connect the system to the power supply, "AUTO INSTALL - PRESS PLAY" appears.
OR
In Eco Power standby/standby mode, press and hold **▶||** on the main unit until "AUTO INSTALL - PRESS PLAY" appears.
- 2 Press **▶||** on the main unit to start installation.
→ "INSTALL TUNER AUTO" appears.
→ All previously stored radio stations will be replaced.
→ Once completed, the last tuned radio station (or the first available RDS station) will play.
- 3 If the first preset is a RDS station, it will proceed to set the RDS clock.
→ "INSTALL" appears, then "TIME" and "SEARCH RDS TIME".
→ When RDS time is read, "RDS TIME" will appear and the current time will be stored.
→ If RDS station does not transmit RDS time within 90 seconds, "NO RDS TIME" will appear and the programme will exit automatically.

Tuner Operations

Automatic presetting

You can start the automatic presetting from a selected preset number:

- 1 In tuner mode, press ◀ or ▶ to select a preset number:
- 2 Press and hold **PROGRAM** until "AUTO" appears.
 - If a radio station is stored in one of the presets, the same radio station will not store under another preset number.
 - If no preset number is selected, automatic preset will begin from preset (1) and all your former presets will be overridden.

Manual presetting

You can choose to store only the favourite radio stations.

- 1 Tune to your desired radio station (refer to "Tuning to radio stations").
- 2 Press **PROGRAM**.
 - The preset number starts flashing. If you want to store the radio station in another preset number, press ◀ or ▶.
- 3 Press **PROGRAM** again to store.
- Repeat **steps 1~3** to store other radio stations.

Selecting a preset radio station

- In tuner mode, press ◀ or ▶.
 - The preset number, radio frequency, and waveband will appear.

Deleting a preset radio station

- Press and hold ■ until "PRESET DELETED" appears.
 - The current preset radio station will be deleted.
 - All other preset radio stations with higher numbers are decreased by one.

RDS

RDS (**R**adio **D**ata **S**ystem) is a service that allows FM stations to show additional information. If you are receiving a RDS station, **RDS** and the station name are displayed.

Scrolling through RDS information

- Tuned to a RDS radio station from FM band, then press **RDS/NEWS** repeatedly to select the following information (if available):
 - Station name
 - Programme type (for example: News, Affairs, Sport, etc.)
 - Radio text messages
 - Frequency

Setting the RDS clock

Some RDS radio station may be transmitting a real clock time at an interval of every minute. It is possible to set the clock by using a time signal which is broadcast together with the RDS signal.

- 1 Tuned to a RDS station from FM band (refer to "Tuning to radio stations").
- 2 Press **CLOCK** twice.
- 3 Press **RDS/NEWS**.
 - "SEARCH RDS TIME" appears.
 - When RDS time is read, the current time will be stored.
 - If the RDS station does not transmit RDS time within 90 seconds, "NO RDS TIME" appears.

Helpful Hint:

– Some RDS radio station may be transmitting a real time clock at a minute interval. The accuracy of the transmitted time depends on the transmitting RDS radio station.

NEWS

You may set up the tuner in such a way that listening to CD or external source is interrupted by the NEWS of a RDS station. This only works if the RDS station broadcasts a NEWS signal while sending the news.

IMPORTANT!

You can activate NEWS function from any source mode except TUNER.

Switching on NEWS function

- 1 In any active mode, press **RDS/NEWS** until "NEWS" appears.
 - **NEWS** shows on the display.
 - The system will scan the radio stations stored in the first five (5) preset and wait for the News Programme Type data to be available in any of these RDS stations.
 - While searching NEWS in progress, the current active mode remains uninterrupted.
- 2 When NEWS transmission is detected, the system will switch to Tuner mode.
 - **NEWS** starts flashing.
- If no RDS station is detected in the first five presets, the system will exit NEWS function.
 - "NO RDS NEWS" appears.

Helpful Hints:

- You have to exit Tuner mode before selecting NEWS function.
- Before you activate the NEWS feature, ensure that the first five presets have RDS stations.
- The NEWS works only once for each activation.

To cancel NEWS function

- Press **RDS/NEWS** again or switch the system to tuner mode.
OR


During news bulletin, press any other available source keys to execute the relevant source mode.

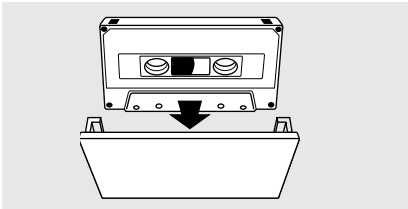
Tape Operations/Recording

IMPORTANT!

- Before playing a tape, check and tighten slack tape with a pencil. Slack tape may get jammed or may burst in the mechanism.
- C-120 tape is extremely thin and is easily deformed or damaged. It is not recommended for use in this system.
- Store the tapes at room temperature and do not put them too close to a magnetic field (for example, a transformer, TV or speaker).

Playing a tape

- 1 Press **TAPE** to select tape mode.
- 2 Press **OPEN/CLOSE**  to open the tape deck door.
- 3 Insert a recorded tape and close the tape deck door.
→ Load the tape with the open side downward and full spool to the left.

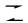
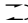



- 4 Press **▶||** to start playback.

To change the playback side

- Press **◀** or **▶** on the remote.
→ During playback, you can press **▶||** on the system to change the playback side.
→ **◀** (BACK) or **▶** (FRONT) appears on the display, depending on the tape side selected.

To change the playback mode

- Press **TAPE A/R** on the remote repeatedly to select the different playback modes.
 -  : playback on one side of the tape only.
 -  : both sides are played once.
 -  : both sides are played repeatedly, up to 10 times each side unless you press **■**.

To rewind or fast forward

- 1 Stop playback, then press **◀◀** / **▶▶** on the remote.
- 2 Press **■** when you reached the desired passage.
→ The tape will stop automatically at the end of rewinding or fast forwarding.

To stop playback

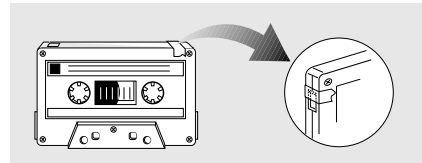
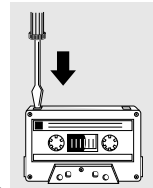
- Press **■**.

Helpful Hint:

- During rewinding or fast forwarding of a tape, it is also possible to select another source (CD or TUNER, for example).

General information on recording

- For recording, use only tape of IEC type I (normal tape).
- The recording level is set automatically, regardless of the position of the Volume, Incredible Surround, BASS/TREBLE and so forth.
- The tape is secured at both ends with leader tape. At the beginning and end of the tape, nothing will be recorded for six to seven seconds.
- To prevent accidental recording, break out the tab on the left shoulder of the tape side you want to protect.
- If "CHECK TAPE" is displayed, the protection tab has been broken. Put a piece of clear adhesive tape over the opening.



IMPORTANT!

Recording is permissible if copyright or other rights of third parties are not infringed upon.

Preparation for recording

- 1 Press **TAPE**.
- 2 Load a recordable tape into the tape deck.
- 3 Press **◀** or **▶** on the remote to select the recording tape side.
→ **◀** appears on the display for the reverse side.
→ **▶** appears on the display for the forward side.
- 4 Press **TAPE A/R** on the remote repeatedly to select a recording mode.
→ **☐** for recording on one side only.
→ **☐☐** for recording on both sides.
- 5 Prepare the source to be recorded.
CD – load the disc.
TUNER – tune to the desired radio station.
AUX – connect external equipment.

When recording is in progress

- **REC** starts flashing.
- It is not possible to change tape side.
- It is not possible to listen to another source.
- It is not possible to activate the timer function.

One touch recording

- 1 Press **CD, TUNER** or **AUX** to select the recording source.
- 2 Start playback of the selected source.
- 3 Press and hold **REC** until **REC** icon starts flashing on the display panel to start recording.

To stop recording

- Press **■** on the system.

Helpful Hint:

– One Touch Recording is not possible in TAPE mode, "SELECT SOURCE" will appear.

CD Synchronised start recording

- 1 Press **CD**.
 - If you want to start recording from a desired track, press **◀** or **▶**.
→ You can programme the tracks in the order you want them to be recorded (refer to "CD Operation - Programming the disc tracks").
- 2 Press and hold **REC** to start recording.
→ The disc will start playback automatically.

To select another track during recording

- 1 Press **▶||** to interrupt recording.
- 2 Press **◀** or **▶** to select the desired track.
- 3 Press **▶||** to resume recording.

To stop recording

- Press **■**.
→ Recording and disc playback will stop simultaneously.

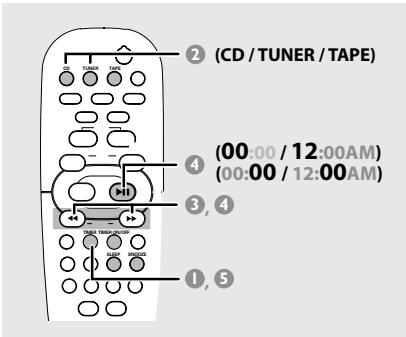
Timer Operations

Timer setting

The system can switch on to CD, TUNER or TAPE mode automatically at a preset time, serving as an alarm to wake you up.

IMPORTANT!

- Before setting the timer, ensure that the clock is set correctly.
- if recording is in progress, the timer function will not be activated.
- The volume of the timer will increase gradually to the last tuned volume level. If the last tuned volume level is too low, the set will then increase to a predetermined minimum audible level.



- 1 Press **TIMER** on the remote.
→ 🕒 icon starts flashing.
- 2 Press **CD, TUNER** or **TAPE** to select the wake-up source.
→ The selected source will be lighted while other available sources are flashing.
- 3 Press **◀** or **▶** repeatedly to set the hour.
- 4 Press **▶||** to change to minutes setting, then press **◀** or **▶** repeatedly to set the minutes.
- 5 Press **TIMER** to store the setting.
→ Once the timer is set, it will always switch on unless you deactivate it.
→ 🕒 icon remains on the display. It indicates the timer is activated.

- **At the preset time, the selected sound source will be played for 30 minutes before it switches to Eco Power standby mode** (if no button is being pressed within the time frame).
→ **CD** – playing the first track of the disc. If the disc tray is empty, it will switch to Tuner mode.
→ **TUNER** – playing the last tuned radio station.
→ **TAPE** – playing the tape.

Activating/Deactivating the timer

- Press **TIMER ON/OFF** on the remote to turn off the timer or turn on to the last setting again.
→ If activated, the timer information will display for a few seconds, then the system resumes to the last active source or stays in standby mode.
→ If deactivated, "OFF" appears.

Helpful Hint:

- The system will exit timer setting mode if no button is pressed within 90 seconds.

Checking the timer setting

- Press **TIMER** on the remote.
→ The timer information will display for a few seconds, then the system resumes to the last active source or stays in standby mode.

Temporarily deactivating the wake up timer

You are only able to activate the Snooze function within 30 minutes after the timer wake up from standby mode.

- 1 After timer wake up, press **SNOOZE** on the remote.
 - The system will switch to standby mode for five minutes. After that, it resumes the timer last selected source again.
- 2 To cancel the snooze function, press **SNOOZE** again.

Setting the Sleep Timer

The sleep timer enables the system to switch to Eco Power standby mode automatically at a preset time

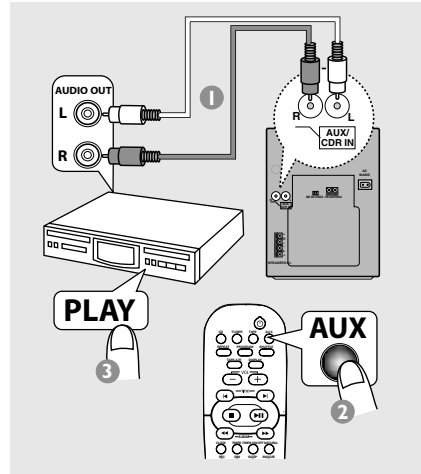
- 1 Press **SLEEP** on the remote repeatedly until it reaches the desired preset turn-off time.
 - The selections are as follows (time in minutes):
 15 → 30 → 45 → 60 → 90 → 120 →
 OFF → 15 ...
 - **SLEEP** appears on the display, except if "OFF" is selected.
 - To view or change the setting, repeat the above.
- 2 Before the system switches to Eco Power standby mode, a countdown of 10 seconds is displayed.
 "SLEEP 10" → "SLEEP 9".... → "SLEEP 1"
 → "SLEEP"

To cancel the sleep timer

- Press **SLEEP** repeatedly until "OFF" appears, or press the **STANDBY ON**  button.

Listening to an external source

You can listen to the sound of the connected external device through your system's speakers.



- 1 Use the red/white audio cables to connect the system's **AUX/CDR IN (R/L)** terminals to the **AUDIO OUT** terminals on the other audio/visual device (such as a TV, VCR, Laser Disc player, DVD player or CD recorder)
 - If the connecting device has only a single audio out terminal, connect it to the **AUX/CDR IN** left terminal. Alternatively, you can use a "single to double" cinch cable, but the output sounds still remain mono.
- 2 Press **AUX** repeatedly.
 - Select "AUX" when connecting to a TV, VCR or Laser Disc player.
 - Select "AUX/CDR" when connecting to a CD recorder or DVD player.
- 3 Press **PLAY** on the connected device to start playback.

Helpful Hints:

- All the sound control features (INC SURR, for example) are available for selection.
- Always refer to the owner's manual of the other equipment for complete connection and use details.

Specifications

AMPLIFIER

Output power	
- MCM7	2 × 100 W MPO 2 × 50 W RMS ⁽¹⁾
- MCM8	2 × 150 W MPO 2 × 75 W RMS ⁽¹⁾
Signal-to-noise ratio	≥ 75 dBA (IEC)
Frequency response	50 – 20000 Hz, –3 dB
Input sensitivity	
AUX/CDR In	500 mV/1V
Output	
Speakers	≥ 6 Ω
Headphones	32 Ω – 1000 Ω
(1) (6 Ω, 1 kHz, 10%THD)	

DISC PLAYER

Programmable tracks	99
Frequency response	20 – 20000 Hz, –3 dB
Signal-to-noise ratio	≥ 76 dBA
Channel separation	≥ 60 dB (1 kHz)
MPEG 1 Layer 3 (MP3-CD) MPEG AUDIO	
MP3-CD bit rate	32-256 kbps (128 kbps advised)
Sampling frequencies	32, 44.1, 48 kHz

TUNER

FM wave range	87.5 – 108 MHz
MW wave range	531 – 1602 kHz
Number of presets	40
Antenna	
FM	75 Ω wire
AM	Loop antenna

TAPE PLAYER

Frequency response	
CrO ₂ tape (type II)	80 – 12500 Hz, –8 dB
Normal tape (type I)	80 – 12500 Hz, –8 dB
Signal-to-noise ratio	
CrO ₂ tape (type II)	≥ 50 dBA
Normal tape (type I)	≥ 47 dBA
Wow and flutter	≤ 0.4% DIN

SPEAKERS

System	3 way, Bass reflex
Impedance	6 Ω
Woofer	1 × 6.5" Aluminium con woofer
Tweeter (MCM7)	18" CD dome, Ferofluid cooled Ribbon tweeter
Tweeter (MCM8)	
Dimensions (w × h × d)	
- MCM7	175 × 254 × 215 (mm)
- MCM8	175 × 254 × 196 (mm)
Weight	
- MCM7	3 kg each
- MCM8	3.1 kg each

GENERAL

Material/finish	Polystyrene/Metal
AC Power	220 – 230 V / 50 Hz
Power Consumption	
Active- MCM7	80 W
- MCM8	60 W
Standby	< 15 W
Eco Power Standby	< 0.6 W
Dimensions (w × h × d)	175 × 252 × 350 (mm)
Weight (without speakers)	5.0 kg

Specifications and external appearance are subject to change without notice.

WARNING

Under no circumstances should you try to repair the system yourself, as this will invalidate the warranty. Do not open the system as there is a risk of electric shock.

If a fault occurs, first check the points listed below before taking the system for repair. If you are unable to remedy a problem by following these hints, consult your dealer or Philips for help.

Problem	Solution
Radio reception is poor.	<ul style="list-style-type: none"> ✓ If the signal is too weak, adjust the antenna or connect an external antenna for better reception. ✓ Increase the distance between the system and your TV or VCR.
“NO DISC” is displayed or the disc cannot be played.	<ul style="list-style-type: none"> ✓ Insert a disc. ✓ Load in the disc with label facing up. ✓ Replace or clean the disc, see “Care and safety information”. ✓ Use a finalised CD-R(W) or a correct format disc.
The system does not react when buttons are pressed.	<ul style="list-style-type: none"> ✓ Remove and reconnect the AC power cord and switch on the system again.
Recording or playback cannot be made.	<ul style="list-style-type: none"> ✓ Use only NORMAL (IEC I) tape. ✓ Apply a piece of adhesive tape over the missing tab space.
The tape deck door cannot open.	<ul style="list-style-type: none"> ✓ Remove and reconnect the AC power plug and switch on the system again.
Sound cannot be heard or is of poor quality.	<ul style="list-style-type: none"> ✓ Adjust the volume. ✓ Disconnect the headphones. ✓ Check that the speakers are connected correctly. ✓ Check that the AC power cord is connected properly.
The remote control does not function properly.	<ul style="list-style-type: none"> ✓ Select the source (CD or TUNER, for example) before pressing the function button (▶ , ◀◀ ▶▶). ✓ Reduce the distance between the remote control and the system. ✓ Replace the battery. ✓ Point the remote control directly toward the IR sensor.
The timer is not working.	<ul style="list-style-type: none"> ✓ Set the clock correctly. ✓ Press TIMER ON/OFF to switch on the timer. ✓ If recording is in progress, stop the recording.
The system displays features automatically and buttons start flashing.	<ul style="list-style-type: none"> ✓ Press and hold DEMO STOP on the main unit to switch off the demonstration mode.