

WORKING
WITH



THE
BEST

WELCOME TO A NEW WORKPLACE.

You can only do your best work with the best tools. And we at EIZO believe that applies to the workstation as well.

As the impact of digitalisation spreads wider, the number of computer workstations continues to grow along with the requirements of a modern workstation. We work hard day and night to not simply just meet these demands, but to surpass them.

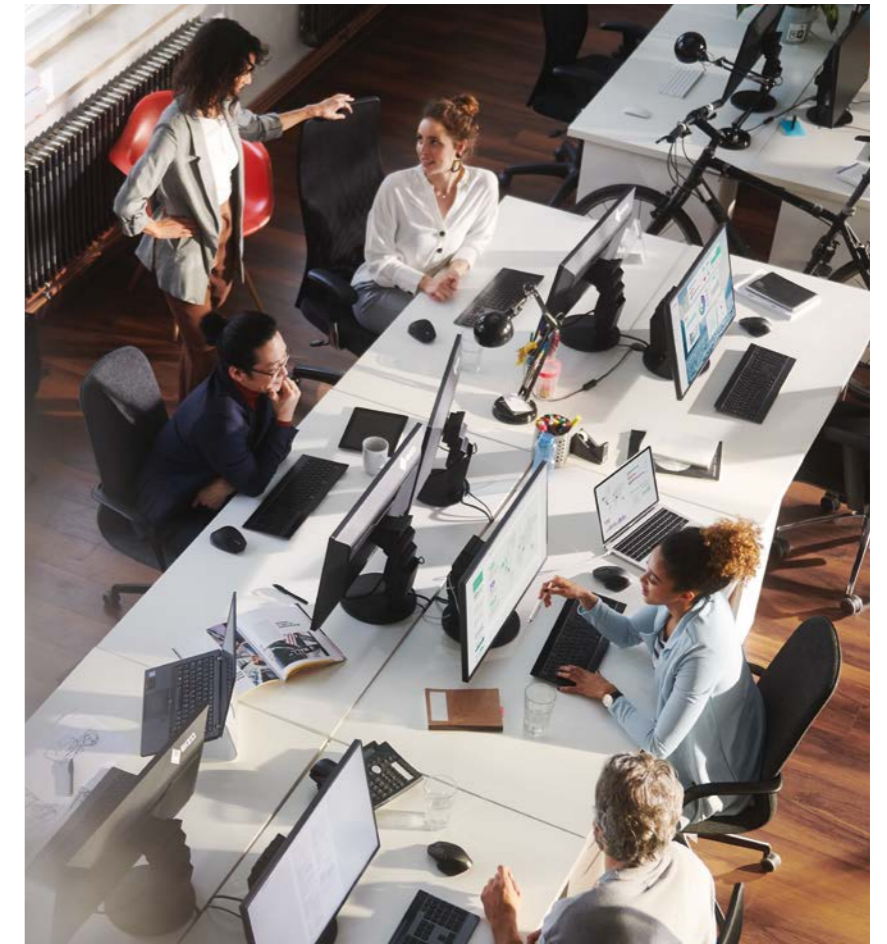
Be it for office applications, accounting, document imaging or CAD, with the FlexScan product line – the centrepiece of EIZO’s portfolio – we offer the best solution for each and every workstation. We know exactly what you expect from an EIZO monitor: the best image quality, the best ergonomics and the best features – and you have the right to expect as much. After all, you give your utmost each

and every day – and that’s why you deserve the best partner. A partner that constantly sets new standards because they hold themselves to the same high standards as you do. A partner that knows better than anyone what’s most important in their field, right down to the last detail.

Plus, we don’t just continuously develop the best solutions, we also deliver the highest quality – which is why our FlexScan monitors come with a five-year warranty.

And that’s why we can make you a simple yet decisive promise:

Working with the best. EIZO.



HOW MUCH PROGRESS HAS YOUR COMPANY MADE IN TERMS OF DEVELOPING THE WORKSTATION OF THE FUTURE?*



*Computerwoche, ChannelPartner, CIO and TecChannel. 'How much progress has your company made in terms of developing the workstation of the future and how does this compare to other companies?' Statista, de.statista.com/statistik/daten/studie/910623/umfrage/future-workplace-selbsteinschaetzung-von-unternehmen-zum-stand-der-entwicklung/, Accessed 5 June 2019 [in German]

QUALITY TIME — YOU DESERVE IT.

There are many things that speak for our FlexScan monitors, above all their excellent image quality.

We have a simple motto at EIZO: nothing is so perfect that it can't be improved. And it goes without saying that this holds true for image quality too. After all, as a driver of innovation and a leader in quality monitor technology, we constantly strive to make the best even better. We take charge of the entire development and manufacturing process to make sure nothing is left to chance. That means we develop

and manufacture everything ourselves and exclusively use high-quality materials for every important component. Plus, nearly every component and each individual monitor is subject to extensive testing and adjustments before delivery. We do this to make an already perfect picture even better because, ultimately, everything we do, we do with one thing in mind: your satisfaction.

**WE DON'T JUST
MEET STANDARDS –
WE SET THEM.**

The best technologies for
the best image.



4K Resolution to ensure the highest image quality

A 4K UHD monitor from EIZO offers you the best support in the office thanks to the extraordinary display quality created by its native resolution of 3840 x 2160 pixels. The resulting image sharpness presents texts and graphic with particular clarity and precision.



Factory adjustments and long-term tests to ensure ultimate quality

Your EIZO monitor has already gone through a lot by the time it arrives on your desk. That's because only devices that have been through the most thorough testing possible are allowed to be dispatched from our facilities – that means the colour temperature, gamma, white balance and brightness of each monitor are all carefully measured and adjusted. In addition, each monitor is inspected by the trained eyes of an EIZO employee. We also subject new products to numerous extended tests spanning thousands of hours of monitor usage time before production to be able to guarantee the lasting product and image quality expected from EIZO.

10-bit LUT: precise colour control

An image can only be perfect if the colours are too. This is why EIZO office monitors have a 10-bit look-up table as a minimum, which allows the colour information to be assigned much more precisely than with conventional 8-bit LUT. The finest colour gradations ensure that gradients are always perfectly displayed while also offering customised adjustment options. For example, you can adjust the white balance from 4000 K to 10000 K in 500-K intervals without any losses.



Typical monitor display with 8-bit LUT



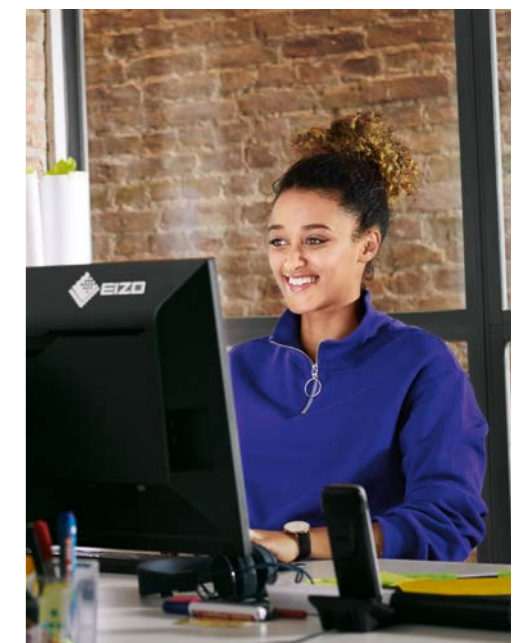
Display with 10-bit LUT

Steady viewing angle with IPS panel

The excellent viewing angle stability of the IPS panel guarantees that you will barely notice any deviation in brightness, colour, sharpness and contrast, even at a tilted viewing angle. Colours and contrasts look the same in the corners as they do in the centre of the screen.

Image processor (ASIC)

We rely on our own expertise when it comes to image processors. Our many years of experience goes into developing our own image processors (ASIC) so we are sure to get the best out of our LCD panels.



READJUST YOUR VIEW WITH EIZO.

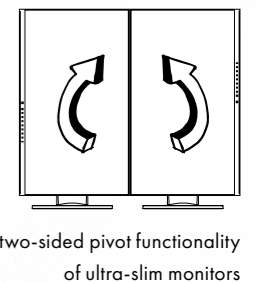
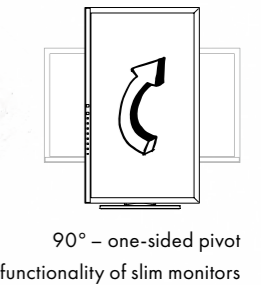
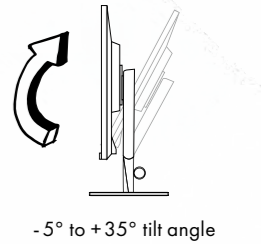
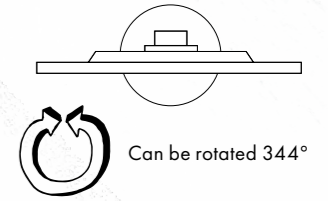
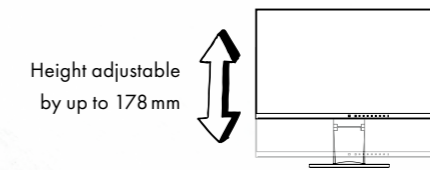
Our FlexScan monitors ensure computer workstations are more ergonomic. So that work doesn't feel like work.

Our goal is to develop a flexible monitor that meets all the requirements of the modern workstation. After all, the digital transformation is in full swing and an increasing number of people are spending many hours sitting at their desk each day – and this can have negative consequences. A large number of people who work at computer workstations suffer from back and neck pain, while many also report having eye problems.

EIZO has found a solution to these issues. In addition to reduce eye and back strain, our

innovative high-end monitors also meet the user's unique requirements. For example, EIZO monitors can be swivelled, rotated and tilted into the position that is most comfortable for the user's posture. They also have several other ergonomic features that reduce eyestrain, thus boosting concentration.

After all, we think the workstation should adapt to the person, not the other way around.



Flexible stand: make yourself comfortable

The monitor stand of the FlexScan models allows you to position the monitors ergonomically. You can tilt the screen 5° forward or 35° backward, rotate it and even lower it to the base plate of the stand. Depending on the model, you can rotate the display by 90° into portrait format and adjust the height by up to 178 mm.



FIT EYES AS STANDARD.

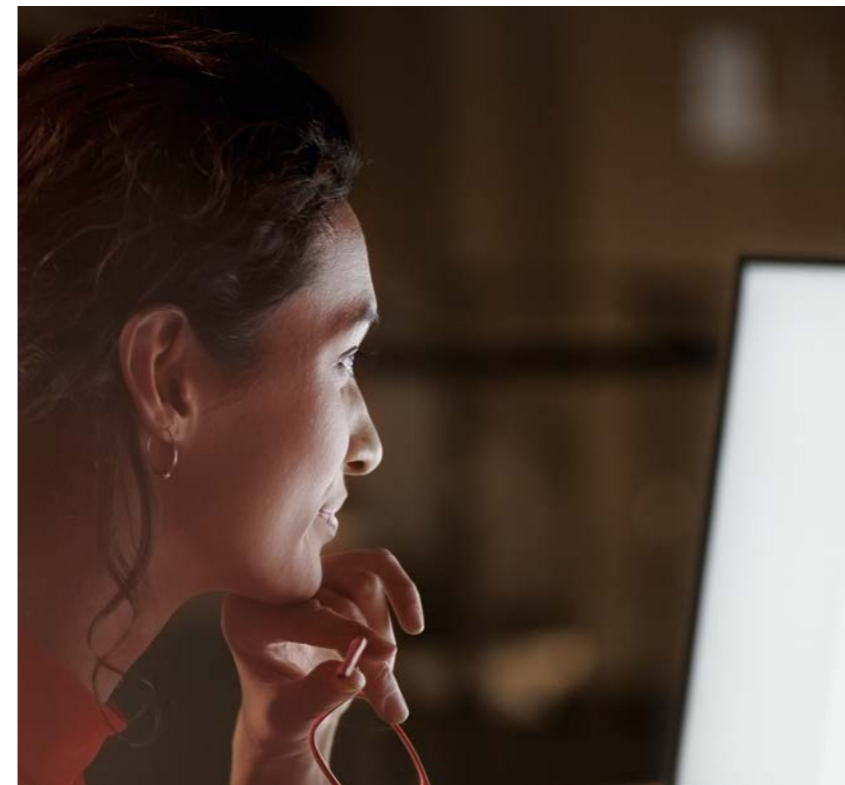
EIZO monitors boast intelligent features that make sure you always enjoy a constantly perfect image and your eyes stay fitter for longer.

Automatic colour mode: optimum images at the touch of a button

Automatic colour mode allows you to assign a specific display mode to individual applications. As soon as you open an application, the screen switches automatically to the predefined mode. Whether you are surfing the web, looking at graphics in Office or using a word processor, automatic colour mode will ensure that you are always using the best setting for the task.

Paper mode: the best setting for working

Paper mode optimises the brightness, contrast and colour temperature of the monitor, simulating the experience of reading real paper. It also reduces the levels of blue light, which significantly reduces the strain on your eyes, especially if you constantly switch between looking at a monitor and looking at paper.



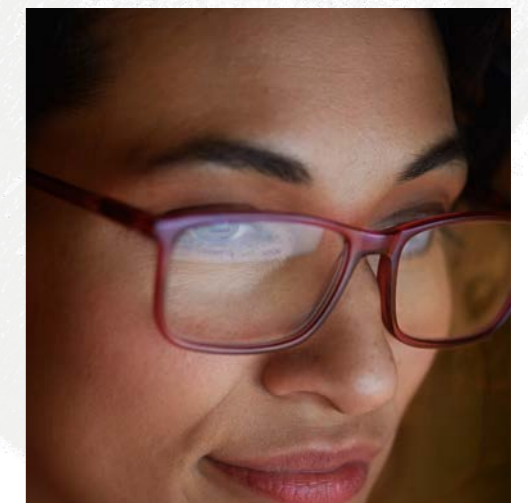
Hybrid control: flicker-free images, without glare

Conventional methods used to control the back-light on monitors can cause an unpleasant flickering. The EcoView series of monitors use technology developed by EIZO, meaning they flicker far less in comparison to LED backlit monitors offered by other manufacturers. Thanks to the hybrid control, you can reduce the display brightness to less than one per cent, which enables you to work more comfortably in poorly lit environments.

Figures vary slightly according to model.

Anti-reflection coating: increasing concentration by reducing reflection

All EIZO monitors are equipped with an anti-reflection coating that reduces the amount of distracting reflections, allowing you to concentrate fully on your work without having to adopt uncomfortable positions while sitting in front of your monitor – positions that put a strain on your neck and muscles.



Auto EcoView: there's more to our monitors than meets the eye

Your monitor is always in sight – and you have the perfect set-up for your eyes. All EIZO FlexScan monitors continually utilise the Auto EcoView functionality to measure the changes in the ambient lighting conditions and automatically optimise screen brightness to tackle the problems posed by lighting conditions changing throughout the day. This reduces the amount you are blinded and also prevents the monitor from being too dark in lighter environments. The Ultra-slim and 4K monitors feature a unique two-point control panel that enables

the user to set a minimum and maximum brightness level between which the monitor automatically adjusts the screen brightness.

Day or night, light or dark – the monitor sensor automatically identifies at which level of ambient light you adjust the brightness of the monitor. When the level of ambient light then changes, the adjustment you have made is used as a basis to adjust the monitor brightness accordingly. The feature is intuitive and runs in the background without the user noticing.



*HIGH-END
WITHOUT END:
EIZO IS REDEFINING LONGEVITY.*

An EIZO monitor is an investment in the future in more ways than one.

Quality stands for longevity and thus ultimately for both cost-efficiency as well as environmental protection. Why? Something that lasts a long time doesn't need to be replaced by something new as quickly, saving material and thus resources. So, an investment in quality is an excellent decision – for both you and the environment.

We believe so strongly in the quality of our monitors that we don't just promise the best quality – we even guarantee it. The proof is our five-year warranty, which eliminates follow-up costs that would accrue in the absence of a warranty scheme for things such as repairs, downtimes or the fees for rental devices. This means our five-year warranty also ensures your investment will

continue to pay off in the future. We know precisely what our monitors do and we want them to keep it up for a long time to come. To make that happen, we need to be sure that each and every individual component is the best the market has to offer. That's why we research, develop and manufacture our products in-house and we do not outsource any of our vital work as part of our highly developed manufacturing process.

The result is monitors that both meet high-end requirements and have a longer service life, while the numerous sensors and sophisticated functionalities also keep power consumption extremely low. And that brings us back to protecting the environment – and cost-efficiency, of course.

PROTECT THE ENVIRONMENT WHILE YOU WORK.

You don't waste time in the office. So don't waste kilowatt hours either.



Auto EcoView: more than just an ergonomic feature

Since Auto EcoView constantly adjusts display brightness to the ambient light, you can enjoy energy savings of up to 50 per cent in comparison with a monitor operating at full brightness.

EcoView Sense: optimising power consumption

Some EcoView models feature an EcoView Sense presence sensor that switches the monitor to energy-efficient mode when you leave your workstation and reactivates upon your return.

Applies to the EV2730Q, EV2430, EV2450, EV2316 and EV2216 models.

EcoView Optimizer: cost savings of up to 30 per cent

EcoView Optimizer recognises image content and reduces the backlight automatically without reducing the image quality, which in turn decreases power consumption.

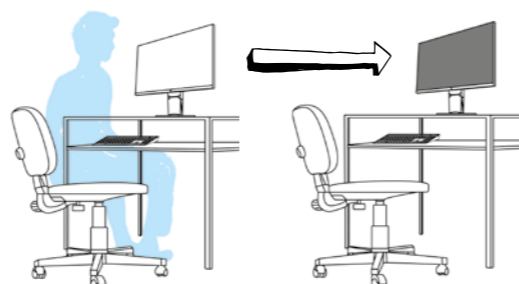
Does not apply to the EV2730Q and S1934 models.

Zero watts: saving energy by powering down

All FlexScan models have a mechanical power switch that results in zero-watt consumption when the monitor is switched off. But each model also uses 0.5 W or less in standby mode.

Excellent: security and environmental sustainability

Most FlexScan models meet the requirements of the TCO 8.0 display standard and correspond to strict international guidelines for ergonomics and energy conservation pursuant to EPA Energy Star and TÜV ergonomics.



LONG LIVE YOUR MONITOR.

How to not just meet the highest quality requirements, but to exceed them.



Five-year warranty. No worries.

As a result of constant research, further development and painstaking quality controls, EIZO is able to offer a five-year warranty for all FlexScan models, including an on-site replacement service* – up to three years longer than typical warranties. For you, this means the highest possible investment security and lower TCO (total cost of ownership). Although the purchase price is higher, the investment and service costs are lower with an EIZO monitor because the service life is substantially longer and guarantees zero repair costs and the associated follow-up costs that would accrue in the first five years.

Research and development

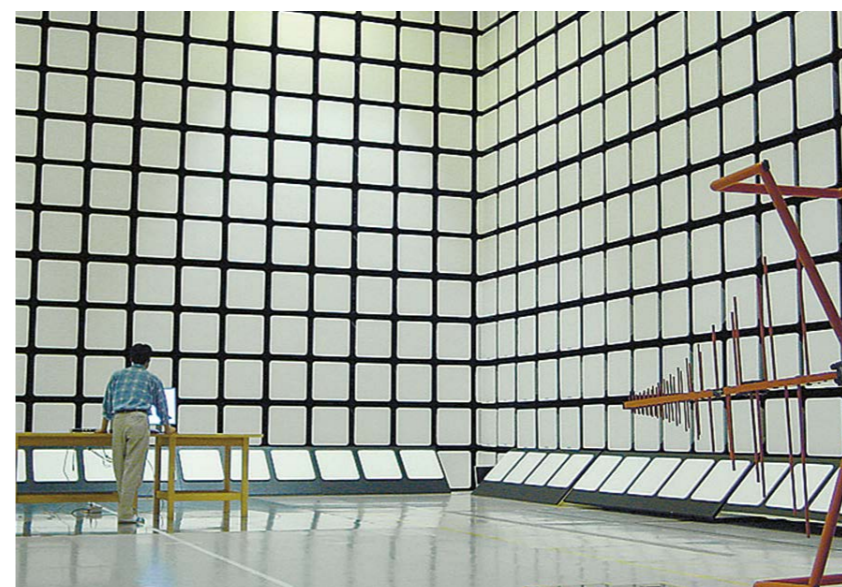
Our unique research and development department enables us to develop pioneering technologies and integrate them perfectly into our products.

Production

We manufacture our monitors ourselves by combining the latest mechanical manufacturing techniques with the most meticulous craftsmanship as this is the only way we can guarantee that our products are manufactured to the highest quality.

Quality control

We ensure that our monitors are resistant to electromagnetic interference, do not emit disruptive signals and comply with international provisions in our in-house measurement laboratories. In our longevity tests, we regularly inspect the image quality of our monitors by leaving them switched on for thousands of hours.



*This service is only available in some European countries. For more information visit please your local EIZO website.

CLEAN DESK. EXTRAORDINARILY ORDERLY.

Make your workstation a tidier one.

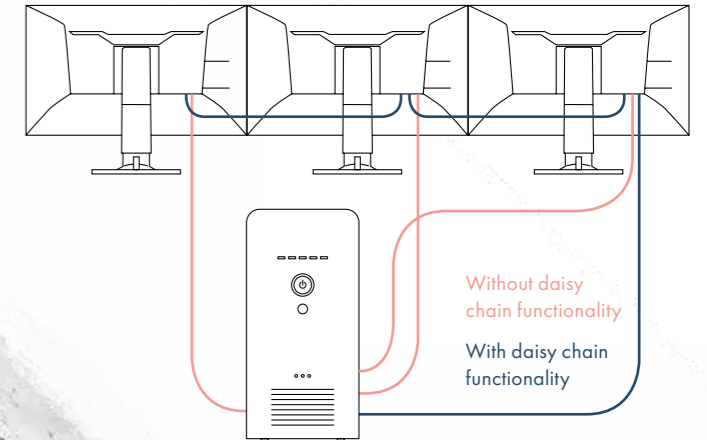
As the saying goes, organisation is half the battle. We say, when it comes to your desk, absolutely. Working in an office is a lot easier if everything on your desk is close to hand, there is no useless clutter lying around and there is nothing to distract you from your work. We want you to give your projects your undivided attention so you can give your best every day. That's why our clean desk options make any workstation tidier, while also lending them a sense of organisation.

Every option ensures that there is nothing on your desk that isn't truly needed, from docking functionalities to multi-screen solutions, right through to Thin Client mounts and practical cable routing – especially when it comes to the number of cables required. The result leaves you with a better overview in the office.

Daisy chain functionality

DisplayPort allows several monitors to be connected together. That means only one monitor needs to be connected to the computer, while the rest are then connected to one another, significantly reducing the number of cables trailing out of the PC.

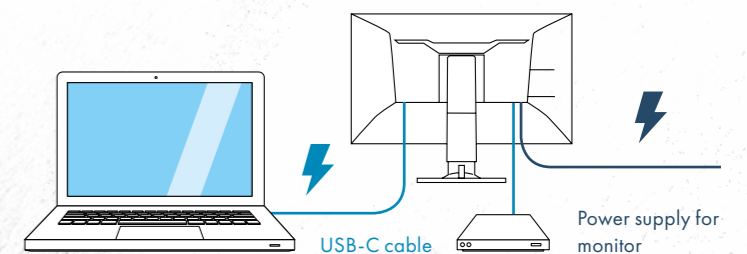
Applies to the EV2457 model.



USB-C with power supply

Some FlexScan monitors feature a USB-C port. You can simultaneously transfer video or audio signals and data and charge a laptop or a smartphone, all with just one cable. An added plus: The monitor provides power to the USB-C port so there is no need for an additional AC adapter.

Applies to the EV3285, EV2785 and EV2780 models.



IMPRESSIVE FEATURES. GREATER COMFORT.

Everything you need – inside and out.
Our FlexScan monitors are carefully designed down to the last detail.

Signal ports*

The rear side of the housing offers a DisplayPort, HDMI, DVI-D, DSub and USB-C ports as well as various connections for digital and analogue signals.



Data connection*

Each model features either a USB 3.1 hub or a USB 2.0 for peripheral USB devices.



Sound output*

The speakers are integrated into the bezel and flush with the monitor. An integrated headphone connection ensures additional comfort.



Audio-in Headphones

*Feature varies depending on the monitor series and the model. Please see the tables starting on page 22 for more information.



Cable protection

Cable routing

A cable holder, clip or cable cover ensures a clean desk and prevents messy cabling, depending on the model.



Thin Client mount

There is a Thin Client mount available as an optional accessory for several EcoView monitors. It is easy to attach to the monitor base and is suited for attaching Thin Client systems with VESA mount points.



Carry handle*

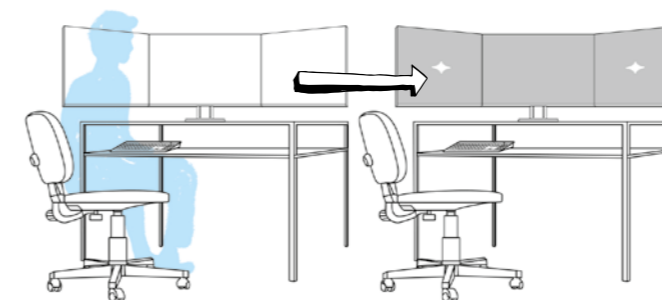
The built-in carry handle on the back of the monitor makes it easy and safe to carry the monitor when unpacking, setting up or transporting the monitor from one place to the next.

INTELLIGENT SOFTWARE FOR OPTIMAL WORK.

Screen InStyle – power consumption, colour, brightness and other settings can be easily managed for single monitor or multi-monitor solutions.

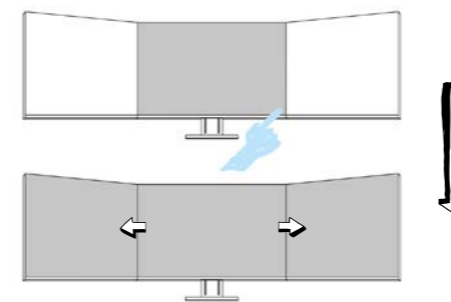
Power management with multiple monitors

Use the power button on one monitor to switch all connected screens either on or off and when monitors have a presence sensor, all monitors will automatically go into sleep mode during your absence.



Synchronisation of screen settings

Every colour setting you select on one monitor is transferred to your other monitors to ensure consistent colouring across all monitors. The automatic brightness adjustment feature is also regulated homogeneously.



Automatic colour mode

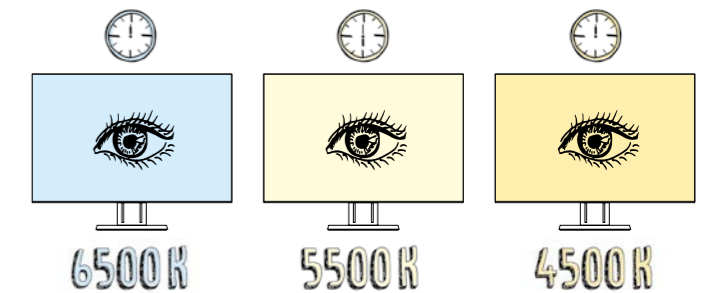
You can select specific monitor settings for individual applications. Your screen automatically switches to the colour mode you defined for the application as soon as you activate it.

Input signal selection via hotkey

When you connect two computers to a monitor, you can easily switch between them using a hotkey or key combination. This also applies if you use the picture-by-picture or picture-in-picture functionalities.

Less blue light

The Circadian Dimming functionality reduces the amount of blue light and its potential impacts by lowering the colour temperature of the monitor over the course of the day.



Administrator management

System administrators can use Screen InStyle Server, the server application, to remotely control monitors that are connected to a computer on which Screen InStyle is installed. This means every EIZO monitor on the network can be administered centrally, enabling power consumption to be optimised without an engineer having to physically go to each monitor, for example.

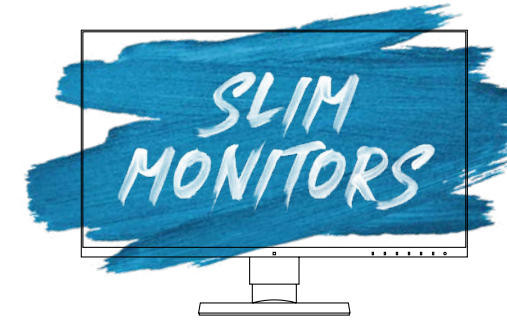
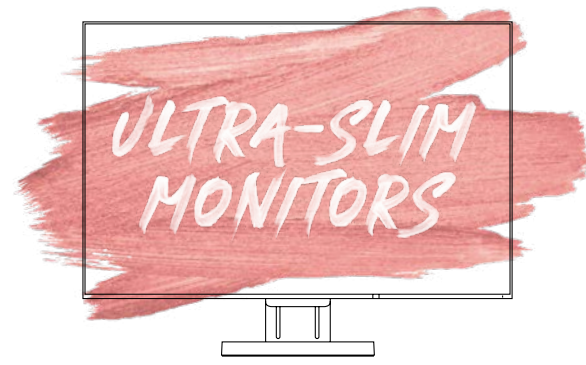
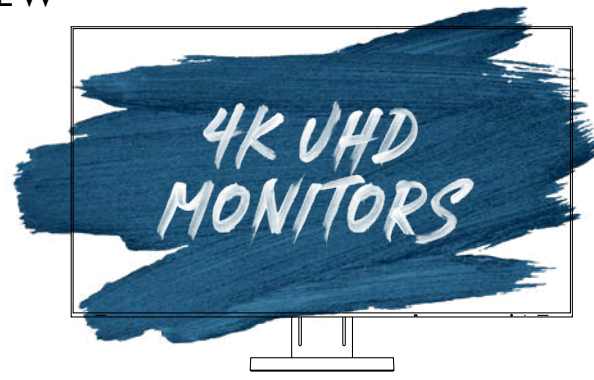
Screen InStyle is available for Ultra-slim monitors and the EV3285 and EV2785 models.

EIZO Monitor Configurator for network-wide settings.

This software allows system administrators to create and distribute monitor configurations through a USB connection. To this end, a monitor's settings can be saved as an XML file and transmitted over the network to the clients for other connected monitors.

EIZO Monitor Configurator is available for Ultra-slim monitors and the EV3285 and EV2785 models.

SERIES OVERVIEW



	EV3285	EV2785	EV2780	EV2750	EV2457	EV2456	EV2451	EV2450	EV2730Q	EV2430	EV2316W	EV2216W	S2133	S1934
SCREEN SIZE	31.5" Aspect ratio 16:9	27" Aspect ratio 16:9	27" Aspect ratio 16:9	27" Aspect ratio 16:9	24.1" Aspect ratio 16:10	24.1" Aspect ratio 16:10	23.8" Aspect ratio 16:9	23.8" Aspect ratio 16:9	26.5" Aspect ratio 1:1	24.1" Aspect ratio 16:10	23" Aspect ratio 16:9	22" Aspect ratio 16:10	21.3" Aspect ratio 4:3	19" Aspect ratio 5:4
RESOLUTION	3840×2160	3840×2160	2560×1440	2560×1440	1920×1200	1920×1200	1920×1080	1920×1080	1920×1920	1920×1200	1920×1080	1680×1050	1600×1200	1280×1024
PANEL	IPS	IPS	IPS	IPS	IPS	IPS	IPS	IPS	IPS	IPS	TN	TN	IPS	IPS
MAX. BRIGHTNESS	350 cd/m ²	350 cd/m ²	350 cd/m ²	350 cd/m ²	350 cd/m ²	350 cd/m ²	250 cd/m ²	250 cd/m ²	300 cd/m ²	300 cd/m ²	250 cd/m ²	250 cd/m ²	420 cd/m ²	250 cd/m ²
SIGNAL INPUTS	1× USB-C 1× DisplayPort 2× HDMI	1× USB-C 1× DisplayPort 2× HDMI	1× USB-C 1× DisplayPort 1× HDMI	1× DisplayPort 1× HDMI 1× DVI-D	1× DisplayPort 1× DisplayPort Out (daisy chain) 1× HDMI 1× DVI-D	1× DisplayPort 1× HDMI 1× DVI-D 1× DSub	1× DisplayPort 1× HDMI 1× DVI-D 1× DSub	1× DisplayPort 1× HDMI 1× DVI-D 1× DSub	1× DisplayPort 1× DVI-D 1× DSub	1× DisplayPort 1× DVI-D 1× DSub	1× DisplayPort 1× DVI-D 1× DSub	1× DisplayPort 1× DVI-D 1× DSub	1× DisplayPort 1× DVI-D 1× DSub	1× DisplayPort 1× DVI-D 1× DSub
USB PORTS	1× Upstream USB-C 2× Downstream USB-A	1× Upstream USB-C 2× Downstream USB-A	1× Upstream USB-C 2× Downstream USB-A	1× Upstream USB-B 2× Downstream USB-A	1× Upstream USB-B 4× Downstream USB-A	1× Upstream USB-B 2× Downstream USB-A	1× Upstream USB-B 2× Downstream USB-A	1× Upstream USB-B 2× Downstream USB-A	1× Upstream USB-B 2× Downstream USB-A	1× Upstream USB-B 2× Downstream USB-A	1× Upstream USB-B 2× Downstream USB-A	1× Upstream USB-B 2× Downstream USB-A	1× Upstream USB-B 2× Downstream USB-A	-
STAND	Tilt range: 35° to the back 5° to the front Rotation: 344° Height adjustment: 148.9 mm	Tilt range: 35° to the back 5° to the front Rotation: 344° Height adjustment: 177.9 mm	Tilt range: 35° to the back 5° to the front Rotation: 344° Height adjustment: 155 mm	Tilt range: 35° to the back 5° to the front Rotation: 344° Height adjustment: 155 mm	Tilt range: 35° to the back 5° to the front Rotation: 344° Height adjustment: 156.8 mm	Tilt range: 35° to the back 5° to the front Rotation: 344° Height adjustment: 158.6 mm	Tilt range: 35° to the back 5° to the front Rotation: 344° Height adjustment: 172.7 mm	Tilt range: 35° to the back 5° to the front Rotation: 344° Height adjustment: 140 mm	Tilt range: 35° to the back 5° to the front Rotation: 344° Height adjustment: 101 mm	Tilt range: 35° to the back 5° to the front Rotation: 344° Height adjustment: 131 mm	Tilt range: 35° to the back 5° to the front Rotation: 344° Height adjustment: 140 mm	Tilt range: 35° to the back 5° to the front Rotation: 344° Height adjustment: 140 mm	Tilt range: 40° to the back Rotation: 70° Height adjustment: 82 mm	Tilt range: 30° to the back Rotation: 70° Height adjustment: 100 mm
FIVE-YEAR WARRANTY	◆	◆	◆	◆	◆	◆	◆	◆	◆	◆	◆	◆	◆	◆

TECHNICAL DATA

	EV3285	EV2785	EV2780	EV2750
	4K UHD monitors		Ultra-slim monitors	
Type	IPS	IPS	IPS	IPS
Size	31.5"/80 cm (diagonal 799 mm)	27"/68.5 cm (diagonal 685 mm)	27"/68.5 cm (diagonal 685 mm)	27"/68.5 cm (diagonal 685 mm)
Native resolution	3840 × 2160 (aspect ratio 16:9)	3840 × 2160 (aspect ratio 16:9)	2560 × 1440 (aspect ratio 16:9)	2560 × 1440 (aspect ratio 16:9)
Additional resolutions	2560 × 1440, 1920 × 1200, 1920 × 1080, 1600 × 1200, 1680 × 1050, 1280 × 1024, 1024 × 768, 800 × 600, 720 × 400, 640 × 480, enlarged to full screen or 1:1	2560 × 1440, 1920 × 1200, 1600 × 1200, 1680 × 1050, 1280 × 1024, 1024 × 768, 800 × 600, 720 × 400, 640 × 480, full screen or 1:1	1920 × 1200, 1920 × 1080, 1600 × 1200, 1680 × 1050, 1280 × 1024, 1024 × 768, 800 × 600, 720 × 400, 640 × 480, full screen or 1:1	1920 × 1200, 1920 × 1080, 1600 × 1200, 1680 × 1050, 1280 × 1024, 1024 × 768, 800 × 600, 720 × 400, 640 × 480, full screen or 1:1
Display size [H x V]	697 × 392 mm	596.7 × 335.7 mm	596.7 × 335.7 mm	596.7 × 335.7 mm
Pixel pitch	0.182 × 0.182 mm	0.155 × 0.155 mm	0.233 × 0.233 mm	0.233 × 0.233 mm
Monitor gamut	16.77 million	16.77 million	16.77 million	16.77 million
Viewing angle [H/V, typical]	178°, 178°	178°, 178°	178°, 178°	178°, 178°
Brightness (typical)	350 cd/m ²	350 cd/m ²	350 cd/m ²	350 cd/m ²
Contrast ratio (typical)	1300:1	1300:1	1000:1	1000:1
Reaction time (typical)	5 ms (grey-grey)	5 ms (grey-grey)	5 ms (grey-grey)	5 ms (grey-grey)
Housing colour	Black, white	Black, white	Black, white	Black, white
Inputs	1 × USB-C (with HDCP 1.3), 1 × DisplayPort (with HDCP 1.3), 2 × HDMI (with HDCP 2.2/1.4)	1 × USB-C (with HDCP 1.3), 1 × DisplayPort (with HDCP 1.3), 2 × HDMI (with HDCP 2.2/1.4)	1 × USB-C (with HDCP), 1 × DisplayPort (with HDCP), 1 × HDMI (with HDCP)	1 × USB-C (with HDCP), 1 × HDMI (with HDCP), 1 × DVI-D, 24-pin (with HDCP)
Digital (H, V)	USB-C: 31 – 134 kHz, 29 – 31 Hz, 59 – 61 Hz, DisplayPort: 31 – 134 kHz, 29 – 31 Hz, 59 – 61 Hz, HDMI: 31 – 135 kHz, 29 – 31 Hz, 49 – 61 Hz	USB-C: 31 – 134 kHz, 29 – 31 Hz, 59 – 61 Hz, DisplayPort: 31 – 134 kHz, 29 – 31 Hz, 59 – 61 Hz, HDMI: 31 – 135 kHz, 29 – 31 Hz, 49 – 61 Hz	USB-C: 31 – 89 kHz, 29 – 31 Hz, 59 – 61 Hz, DisplayPort: 31 – 89 kHz, 59 – 61 Hz, HDMI: 31 – 89 kHz, 29 – 31 Hz, 49 – 51 Hz, 59 – 61 Hz	DisplayPort: 31 – 89 kHz, 59 – 61 Hz, HDMI: 31 – 89 kHz, 49 – 61 Hz, DVI-D: 31 – 89 kHz, 59 – 61 Hz
Analogue (H, V)	–	–	–	–
Sync formats	–	–	–	–
USB upstream ports	1 × Type C, USB 3.1 Gen. 1 (DisplayPort Alt Mode, 60 W power supply)	1 × Type C, USB 3.1 Gen. 1 (DisplayPort Alt Mode, 60 W power supply)	1 × Type C, USB 3.1 Gen. 1 (DisplayPort Alt Mode, 30 W power supply)	1 × Type B, USB 3.1 Gen. 1
USB downstream ports	2 × Type A, USB 3.1 Gen. 1 (1 × 10.5 W battery charging function)	2 × Type A, USB 3.1 Gen. 1 (1 × 10.5 W battery charging function)	2 × Type A, USB 3.1 Gen. 1	2 × Type A, USB 3.1 Gen. 1
Speakers	2 × 1 W (front)	2 × 1 W (front)	2 × 1 W	2 × 1 W
Inputs	–	–	–	3.5-mm stereo jack socket
Outputs	3.5-mm headphone jack	3.5-mm headphone jack	3.5-mm headphone jack	3.5-mm headphone jack
Mains voltage	AC 100 – 240 V, 50/60 Hz	AC 100 – 240 V, 50/60 Hz	AC 100 – 240 V, 50/60 Hz	AC 100 – 240 V, 50/60 Hz
Max. power consumption	163 W	163 W	96 W	67 W
Typical power consumption	33 W	32 W	23 W	22 W
Standby/power switch is off	less than 0.5 W/0 W	less than 0.5 W/0 W	less than 0.5 W/0 W	less than 0.5 W/0 W
Energy efficiency class	A	A	A	A
Annual energy consumption	45 kWh	43 kWh	42 kWh	39 kWh
Colour modes	Paper, Movie, sRGB, DICOM, User1, User2	Paper, Movie, sRGB, DICOM, User1, User2	Paper, Movie, sRGB, User1, User2	Paper, Movie, sRGB, DICOM, User1, User2
Auto EcoView	◆	◆	◆	◆
EcoView Sense	–	–	–	–
Look-up table	14	14	14	14
Overdrive	◆	◆	◆	◆
Pivot functionality	–	◆	◆	◆
Picture-in-picture/picture-by-picture	◆/◆	◆/–	◆/–	◆/–
Integrated power supply unit	◆	◆	◆	◆
Detachable stand	◆	◆	◆	◆
Plug & Play	◆	◆	◆	◆
OSD languages	German, English, French, Italian, Japanese, Swedish, Spanish, Chinese	German, English, French, Italian, Japanese, Swedish, Spanish, Chinese	German, English, French, Italian, Japanese, Swedish, Spanish, Chinese	German, English, French, Italian, Japanese, Swedish, Spanish, Chinese
Adjustable via on-screen display	Brightness, contrast, gamma, Auto EcoView, EcoView Optimizer, colour mode, colour temperature, saturation, hue, Overdrive, scaling options, audio source	Brightness, contrast, gamma, Auto EcoView, EcoView Optimizer, colour mode, colour temperature, saturation, hue, Overdrive, scaling options, audio source	Brightness, contrast, gamma, Auto EcoView, EcoView Optimizer, colour mode, colour temperature, saturation, hue, Overdrive, scaling options, audio source	Brightness, contrast, gamma, Auto EcoView, EcoView Optimizer, colour mode, colour temperature, saturation, hue, Overdrive, scaling options, audio source
Dimensions [W x H x D]	717.4 × 427.3 – 576.2 × 230 mm	611.4 × 367.3 – 545.2 × 230 mm	611.6 × 390.2 – 545.2 × 245 mm	611.6 × 390.2 – 545.2 × 245 mm
Dimensions (without stand, W x H x D)	717.4 × 416.3 × 51.5 mm	611.4 × 356.3 × 50 mm	611.6 × 359 × 48.5 mm	611.6 × 359 × 48.5 mm
Net weight	11 kg	8.2 kg	8.1 kg	7.9 kg
Net weight (without stand)	7.6 kg	4.9 kg	5.3 kg	5.1 kg
Height adjustment	148.9 mm	177.9 mm	155 mm	155 mm
Tilt	35° to the back, 5° to the front	35° to the back, 5° to the front	35° to the back, 5° to the front	35° to the back, 5° to the front
Rotatability	344°	344°	344°	344°
Pivot	–	90° (clockwise)	90° (clockwise and anti-clockwise)	90° (clockwise and anti-clockwise)
VESA attachment	100 × 100 mm	100 × 100 mm	100 × 100 mm	100 × 100 mm
Up-to-date information is available from EIZO Group companies and distribution partners in your country.	CE, CB, TCO certified 8.0, EPA Energy Star, TÜV/GS, TÜV certified ergonomics (including ISO 9241-307*), TÜV/Blue Low Light Content, TÜV/Flicker Free, EPEAT Gold, eTÜVus, TÜV/S, EAC, PSE, FCC-B, CAN ICES-3(B), RCM, VCCI-B, CCC, RoHS, China RoHS, WEEE	CE, CB, TCO certified 8.0, EPA Energy Star, TÜV/GS, TÜV certified ergonomics (including ISO 9241-307*), TÜV/Blue Low Light Content, TÜV/Flicker Free, EPEAT Gold, eTÜVus, TÜV/S, EAC, PSE, FCC-B, CAN ICES-3(B), RCM, VCCI-B, CCC, RoHS, China RoHS, WEEE	CE, CB, TCO certified 8.0, EPA Energy Star, TÜV/GS, TÜV certified ergonomics (including ISO 9241-307*), TÜV/Blue Low Light Content, TÜV/Flicker Free, EPEAT Gold, eTÜVus, TÜV/S, EAC, PSE, FCC-B, CAN ICES-3(B), RCM, VCCI-B, CCC, RoHS, China RoHS, WEEE	CE, CB, TCO certified 8.0, EPA Energy Star, TÜV/GS, TÜV certified ergonomics (including ISO 9241-307*), TÜV/Blue Low Light Content, TÜV/Flicker Free, EPEAT Gold, eTÜVus, TÜV/S, EAC, PSE, FCC-B, CAN ICES-3(B), RCM, VCCI-B, CCC, RoHS, China RoHS, WEEE
Accessories included	Power cable, signal cable (USB-C to USB-C, DisplayPort to DisplayPort, HDMI to HDMI), cable protection, Setup Guide	Power cable, signal cable (USB-C to USB-C, DisplayPort to DisplayPort, HDMI to HDMI), cable protection, Setup Guide	Power cable, signal cable (USB-C to USB-C), CD-ROM (PDF user's manual), Setup Guide	Power cable, signal cable (DisplayPort to DisplayPort), USB 3.0 cable, Setup Guide
Warranty	Five years** with an on-site exchange service***	Five years** with an on-site exchange service***	Five years** with an on-site exchange service***	Five years** with an on-site exchange service***

*Zero pixel error guarantee for fully illuminated sub-pixels (partial image elements ISO 9241-307). Valid: six months from the date of purchase.

**Maximum of 30,000 hours of monitor usage time.

***This service is only available in some European countries. For more information visit please your local EIZO website.

	EV2457	EV2456	EV2451	EV2450
	Ultra-slim monitors			
Type	IPS	IPS	IPS	IPS
Size	24.1"/61.1 cm (diagonal 611 mm)	24.1"/61.1 cm (diagonal 611 mm)	23.8"/60.4 cm (diagonal 604 mm)	23.8"/60 cm (diagonal 604 mm)
Native resolution	1920 × 1200 (aspect ratio 16:10)	1920 × 1200 (aspect ratio 16:10)	1920 × 1080 (aspect ratio 16:9)	1920 × 1080 (aspect ratio 16:9)
Additional resolutions	1920 × 1080, 1600 × 1200, 1680 × 1050, 1280 × 1024, 1024 × 768, 800 × 600, 720 × 400, 640 × 480, full screen or 1:1	1920 × 1080, 1600 × 1200, 1680 × 1050, 1280 × 1024, 1024 × 768, 800 × 600, 720 × 400, 640 × 480, full screen or 1:1	1600 × 1200, 1680 × 1050, 1280 × 1024, 1024 × 768, 800 × 600, 720 × 400, 640 × 480, full screen or 1:1	1680 × 1050, 1280 × 1024, 1024 × 768, 800 × 600, 720 × 400, 640 × 480, full screen or 1:1
Display size [H x V]	518.4 × 324 mm	518.4 × 324 mm	527 × 296.5 mm	527 × 296.4 mm
Pixel pitch	0.270 × 0.270 mm	0.270 × 0.270 mm	0.275 × 0.275 mm	0.275 × 0.275 mm
Monitor gamut	16.77 million	16.77 million	16.77 million	16.77 million
Viewing angle [H/V, typical]	178°, 178°	178°, 178°	178°, 178°	178°, 178°
Brightness (typical)	350 cd/m ²	350 cd/m ²	250 cd/m ²	250 cd/m ²
Contrast ratio (typical)	1000:1	1000:1	1000:1	1000:1
Reaction time (typical)	5 ms (grey-grey)	5 ms (grey-grey)	5 ms (grey-grey)	5 ms (grey-grey)
Housing colour	Black, white	Black, white	Black, white	Black, light grey, white
Inputs	1 × DisplayPort (with HDCP), 1 × DVI-D, 24-pin (with HDCP), 1 × HDMI (with HDCP)	1 × DisplayPort (with HDCP), 1 × DVI-D, 24-pin (with HDCP), 1 × HDMI (with HDCP), 1 × DSub, 15-pin	1 × DisplayPort (with HDCP), 1 × DVI-D, 24-pin (with HDCP), 1 × HDMI (with HDCP), 1 × DSub, 15-pin	1 × DisplayPort (with HDCP), 1 × DVI-D, 24-pin (with HDCP), 1 × HDMI (with HDCP), 1 × DSub, 15-pin
Digital (H, V)	DisplayPort: 31 – 76 kHz, 59 – 61 Hz, HDMI: 15 – 76 kHz, 49 – 61 Hz, DVI-D: 31 – 76 kHz, 59 – 61 Hz	DisplayPort: 31 – 76 kHz, 59 – 61 Hz, HDMI: 15 – 76 kHz, 49 – 51 Hz, 59 – 61 Hz, DVI-D: 31 – 76 kHz, 59 – 61 Hz	DisplayPort: 31 – 68 kHz, 59 – 61 Hz, HDMI: 15 – 68 kHz, 49 – 51 Hz, 59 – 61 Hz, DVI-D: 31 – 68 kHz, 59 – 61 Hz	DisplayPort: 31 – 68 kHz, 59 – 61 Hz, HDMI: 15 – 68 kHz, 49 – 61 Hz, DVI-D: 31 – 68 kHz, 59 – 61 Hz
Analogue (H, V)	–	31 – 81 kHz, 55 – 76 Hz	31 – 81 kHz, 55 – 76 Hz	31 – 81 kHz, 55 – 76 Hz
Sync formats	–	Separate	Separate	Separate
USB upstream ports	1 × Type B, USB 3.1 Gen. 1	1 × Type B, USB 3.1 Gen. 1	1 × Type B, USB 3.1 Gen. 1	1 × Type B, USB 3.1 Gen. 1
USB downstream ports	4 × Type A, USB 3.1 Gen. 1	2 × Type A, USB 3.1 Gen. 1	2 × Type A, USB 3.1 Gen. 1	2 × Type A, USB 3.1 Gen. 1
Speakers	2 × 1 W (front)	2 × 1 W	2 × 1 W	2 × 1 W
Inputs	3.5-mm stereo jack socket	3.5-mm stereo jack socket	3.5-mm stereo jack socket	3.5-mm stereo jack socket
Outputs	3.5-mm headphone jack	3.5-mm headphone jack	3.5-mm headphone jack	3.5-mm headphone jack
Mains voltage	AC 100 – 240 V, 50/60 Hz	AC 100 – 240 V, 50/60 Hz	AC 100 – 120 V/200 – 240 V, 50/60 Hz	AC 100 – 120 V/200 – 240 V, 50/60 Hz
Max. power consumption	59 W	44 W	42 W	44 W
Typical power consumption	11 W	11 W	13 W	11 W
Standby/power switch is off	less than 0.5 W/0 W	less than 0.5 W/0 W	less than 0.5 W/0 W	less than 0.5 W/0 W
Energy efficiency class	A++	A++	A+	A+
Annual energy consumption	19.8 kWh	19 kWh	19 kWh	25 kWh
Colour modes	Paper, Movie, sRGB, DICOM, User1, User2	Paper, Movie, sRGB, DICOM, User1, User2	Paper, Movie, sRGB, DICOM, User1, User2	Paper, Movie, sRGB, DICOM, User1, User2
Auto EcoView	◆	◆	◆	◆
EcoView Sense	–	–	–	–
Look-up table	14	10	10	10
Overdrive	◆	◆	◆	◆
Pivot functionality	◆	◆	◆	◆
Picture-in-picture/picture-by-picture	–/–	–/–	–/–	–/–
Integrated power supply unit	◆	◆	◆	◆
Detachable stand	◆	◆	◆	◆
Plug & Play	◆	◆	◆	◆
OSD languages	German, English, French, Italian, Japanese, Swedish, Spanish, Chinese	German, English, French, Italian, Japanese, Swedish, Spanish, Chinese	German, English, French, Italian, Japanese, Swedish, Spanish, Chinese	German, English, French, Italian, Japanese, Swedish, Spanish, Chinese
Adjustable via on-screen display	Brightness, contrast, gamma, Auto EcoView, EcoView Optimizer, colour mode, colour temperature, saturation, hue, Overdrive, scaling options, audio source	Brightness, contrast, gamma, Auto EcoView, EcoView Optimizer, colour mode, colour temperature, saturation, hue, Overdrive, scaling options, audio source	Brightness, contrast, gamma, Auto EcoView, EcoView Optimizer, colour mode, colour temperature, saturation, hue, Overdrive, scaling options, audio source	Brightness, contrast, gamma, Auto EcoView, EcoView Optimizer, colour mode, colour temperature, saturation, hue, Overdrive, scaling options, audio source
Dimensions [W x H x D]	531 × 353 – 510 × 190 mm	531 × 351.4 – 510.1 × 190 mm	537.7 × 322.7 – 495.4 × 190 mm	537.6 × 368 – 473.5 × 233 mm
Dimensions (without stand, W x H x D)	531 × 344 × 46 mm	531 × 341.9 × 45.5 mm	537.7 × 313.1 × 45.5 mm	537.6 × 317.6 × 47.9 mm
Net weight	5.8 kg	5.7 kg	5.5 kg	6.2 kg
Net weight (without stand)	3.8 kg	3.7 kg	3.5 kg	3.8 kg
Height adjustment	156.8 mm	158.6 mm	172.7 mm	140 mm
Tilt	35° to the back, 5° to the front	35° to the back, 5° to the front	35° to the back, 5° to the front	35° to the back, 5° to the front
Rotatability	344°	344°	344°	344°
Pivot	90° (clockwise and anti-clockwise)	90° (clockwise and anti-clockwise)	90° (clockwise and anti-clockwise)	90° (clockwise and anti-clockwise)
VESA attachment	100 × 100 mm	100 × 100 mm	100 × 100 mm	100 × 100 mm
Up-to-date information is available from EIZO Group companies and distribution partners in your country.	CE, CB, TCO certified 8.0, EPA Energy Star, TÜV/GS, TÜV certified ergonomics (including ISO 9241-307*), TÜV/Blue Low Light Content, TÜV/Flicker Free, EPEAT Gold, eTÜVus, TÜV/S, EAC, PSE, FCC-B, CAN ICES-3(B), RCM, VCCI-B, CCC, RoHS, China RoHS, WEEE	CE, CB, TCO certified 8.0, EPA Energy Star, TÜV/GS, TÜV certified ergonomics (including ISO 9241-307*), TÜV/Blue Low Light Content, TÜV/Flicker Free, EPEAT Gold, eTÜVus, TÜV/S, EAC, PSE, FCC-B, CAN ICES-3(B), RCM, VCCI-B, CCC, RoHS, China RoHS, WEEE	CE, CB, TCO certified 8.0, EPA Energy Star, TÜV/GS, TÜV certified ergonomics (including ISO 9241-307*), TÜV/Blue Low Light Content, TÜV/Flicker Free, EPEAT Gold, eTÜVus, TÜV/S, EAC, PSE, FCC-B, CAN ICES-3(B), RCM, VCCI-B, CCC, RoHS, China RoHS, WEEE	CE, CB, TCO certified 8.0, EPA Energy Star, TÜV/GS, TÜV certified ergonomics (including ISO 9241-307*), TÜV/Blue Low Light Content, TÜV/Flicker Free, EPEAT Gold, eTÜVus, TÜV/S, EAC, PSE, FCC-B, CAN ICES-3(B), RCM, VCCI-B, CCC, RoHS, China RoHS, WEEE
Accessories included	Power cable, signal cable (DisplayPort to DisplayPort), USB 3.0 cable, Setup Guide, cable protection	Power cable, signal cable (DisplayPort to DisplayPort), USB 3.0 cable, Setup Guide	Power cable, signal cable (DisplayPort to DisplayPort), USB 3.0 cable, Setup Guide	Power cable, signal cable (DisplayPort to DisplayPort), USB 3.0 cable, Setup Guide
Warranty	Five years** with an on-site exchange service***	Five years** with an on-site exchange service***	Five years** with an on-site exchange service***	Five years** with an on-site exchange service***

PLEASE OPEN!

TECHNICAL DATA



Slim monitors					
	EV2730Q	EV2430	EV2316W		
Display	Type	IPS	IPS	TN	
	Size	26.5"/67 cm (diagonal 672 mm)	24.1"/61 cm (diagonal 611 mm)	23"/58 cm (diagonal 584 mm)	
	Native resolution	1920×1920 (aspect ratio 1:1)	1920×1200 (aspect ratio 16:10)	1920×1080 (aspect ratio 16:9)	
	Additional resolutions	1920×1200, 1600×1200, 1280×1024, 1024×768, 800×600, 720×400, 640×480, full screen or 1:1	1600×1200, 1680×1050, 1280×1024, 1024×768, 800×600, 720×400, 640×480, full screen or 1:1	1680×1050, 1280×1024, 1024×768, 800×600, 720×400, 640×480, full screen or 1:1	
	Display size (H x V)	475.7×475.7 mm	518×324 mm	509.8×286.7 mm	
	Pixel pitch	0.248×0.248 mm	0.270×0.270 mm	0.265×0.265 mm	
	Monitor gamut	16.77 million	16.77 million	16.77 million	
	Viewing angle (H/V, typical)	178°, 178°	178°, 178°	170°, 160°	
	Brightness (typical)	300 cd/m ²	300 cd/m ²	250 cd/m ²	
	Contrast ratio (typical)	1000:1	1000:1	1000:1	
	Reaction time (typical)	5 ms (grey-grey)	14 ms (grey-grey)	5 ms (black-white-black)	
	Housing colour	Black, light grey	Black, light grey	Black, light grey	
	Video signals	Inputs	1× DisplayPort, 1× DVI-D, 24-pin (with HDCP)	1× DisplayPort (with HDCP), 1× DVI-D, 24-pin (with HDCP), 1× DSub, 15-pin	1× DisplayPort (with HDCP), 1× DVI-D, 24-pin (with HDCP), 1× DSub, 15-pin
Digital (H, V)		31–127 kHz, 59–61 Hz (VGA Text 69–71 Hz, Single link 29–31 Hz)	DisplayPort: 31–76 kHz, 59–61 Hz, DVI-D: 31–76 kHz, 59–61 Hz	DisplayPort: 31–67.5 kHz, 59–61 Hz, DVI-D: 31–68 kHz, 59–61 Hz	
Analogue (H, V)		–	31–76 kHz, 55–61 Hz	31–68 kHz, 55–61 Hz	
Sync formats		–	Separate	Separate	
USB	USB upstream ports	1× Type B, USB 2.0 Gen. 1	1× Type B, USB 2.0 Gen. 1	1× Type B, USB 2.0 Gen. 1	
	USB downstream ports	2× Type A, USB 2.0 Gen. 1	2× Type A, USB 2.0 Gen. 1	2× Type A, USB 2.0 Gen. 1	
Audio	Speakers	2× 1 W	2× 1 W	2× 1 W	
	Inputs	3.5-mm stereo jack socket	3.5-mm stereo jack socket	3.5-mm stereo jack socket	
	Outputs	3.5-mm headphone jack	3.5-mm headphone jack	3.5-mm headphone jack	
Power supply	Mains voltage	AC 100–240 V, 50/60 Hz	AC 100–120 V/200–240 V, 50/60 Hz	AC 100–120 V/200–240 V, 50/60 Hz	
	Max. power consumption	64 W	36 W	37 W	
	Typical power consumption	25 W	12 W	10 W	
	Standby/power switch is off	Less than 0.5 W/0 W	Less than 0.3 W/0 W	Less than 0.3 W/0 W	
Features and functionalities	Colour modes	Paper, Movie, sRGB, User 1, User 2	Paper, Movie, sRGB, User 1, User 2	Paper, Movie, sRGB, User 1, User 2	
	Auto EcoView	◆	◆	◆	
	EcoView Sense	◆	◆	◆	
	Look-up table	10	10	10	
	Overdrive	◆	–	–	
	Pivot functionality	◆	–	◆	
	UpView	–	–	◆	
	Picture-in-picture/picture-by-picture	–/–	–/–	–/–	
	Integrated power supply unit	◆	◆	◆	
	Detachable stand	◆	◆	◆	
Settings	Adjustable via on-screen display	Brightness, contrast, gamma, Auto EcoView, EcoView Sense, colour mode, colour temperature, saturation, hue, Overdrive, scaling options, audio source	Brightness, contrast, gamma, Auto EcoView, EcoView Optimizer, colour mode, colour temperature, saturation, hue, Overdrive, scaling options, audio source	Brightness, contrast, gamma, Auto EcoView, EcoView Optimizer, colour mode, colour temperature, saturation, hue, Overdrive, scaling options, audio source	
	Dimensions and weight	Dimensions (W x H x D)	497×512.5–613.5×245 mm	552.5×368–499×233 mm	540×338.5–478.5×233 mm
		Dimensions (without stand, W x H x D)	497×501.5×56 mm	552.5×358×57 mm	540×317.5×56 mm
Net weight		7.1 kg	6.7 kg	5.9 kg	
Net weight (without stand)		4.2 kg	4.3 kg	3.1 kg	
Height adjustment		101 mm (max. 141 mm)	131 mm	140 mm	
Tilt		35° to the back, 5° to the front	35° to the back, 5° to the front	35° to the back, 5° to the front	
Certifications and standards	Up-to-date information is available from EIZO Group companies and distribution partners in your country.	CE, CB, TÜV/GS, TÜV certified ergonomics (including ISO 9241-307*), cTÜVus, TÜV/S, EAC, PSE, FCC-B, CAN ICES-3(B), RCM, VCCI-B, CCC, RoHS, WEEE	CE, CB, TCO certified 8.0, EPA Energy Star, TÜV/GS, TÜV certified ergonomics (including ISO 9241-307*), TÜV/Blue Low Light Content, TÜV/Flicker Free, EPEAT Gold, cTÜVus, TÜV/S, EAC, PSE, FCC-B, CAN ICES-3(B), RCM, VCCI-B, CCC, RoHS, China RoHS, WEEE	CE, CB, TCO certified 8.0, EPA Energy Star, TÜV/GS, TÜV certified ergonomics (including ISO 9241-307*), TÜV/Blue Low Light Content, TÜV/Flicker Free, EPEAT Gold, cTÜVus, EAC, FCC-B, CAN ICES-3(B), RCM, CCC, RoHS, China RoHS, WEEE	
	Accessories	Accessories included	Power cable, signal cable (DVI-D to DVI-D [Dual Link support]), DisplayPort to DisplayPort, Setup Guide	Power cable, signal cable (DVI-D to DVI-D, DisplayPort to DisplayPort), Setup Guide	Power cable, signal cable (DVI-D to DVI-D, DisplayPort to DisplayPort), Setup Guide
		Warranty	Five years** with an on-site exchange service***	Five years** with an on-site exchange service***	Five years** with an on-site exchange service***

Slim monitors					
	EV2216W	S2133	S1934		
Display	Type	TN	IPS	IPS	
	Size	22"/56 cm (diagonal 558 mm)	21.3"/54 cm (diagonal 540 mm)	19"/48 cm (diagonal 480 mm)	
	Native resolution	1680×1050 (aspect ratio 16:10)	1600×1200 (aspect ratio 4:3)	1280×1024 (aspect ratio 5:4)	
	Additional resolutions	1280×1024, 1024×768, 800×600, 720×400, 640×480, full screen or 1:1	1280×1024, 1024×768, 800×600, 720×400, 640×480, full screen or 1:1	1024×768, 800×600, 720×400, 640×480, full screen	
	Display size (H x V)	473.7×296.1 mm	432×324 mm	374.8×299.8 mm	
	Pixel pitch	0.282×0.282 mm	0.270×0.270 mm	0.293×0.293 mm	
	Monitor gamut	16.77 million	16.77 million	16.77 million	
	Viewing angle (H/V, typical)	170°, 160°	178°, 178°	178°, 178°	
	Brightness (typical)	250 cd/m ²	420 cd/m ²	250 cd/m ²	
	Contrast ratio (typical)	1000:1	1500:1	1000:1	
	Reaction time (typical)	5 ms (black-white-black)	6 ms (grey-grey)	14 ms (grey-grey)	
	Housing colour	Black, light grey	Black, light grey	Black, light grey	
	Video signals	Inputs	1× DisplayPort (with HDCP), 1× DVI-D, 24-pin (with HDCP), 1× DSub, 15-pin	1× DisplayPort (with HDCP), 1× DVI-D, 24-pin (with HDCP), 1× DSub, 15-pin	1× DisplayPort (with HDCP), 1× DVI-D, 24-pin (with HDCP), 1× DSub, 15-pin
Digital (H, V)		DisplayPort: 31–67.5 kHz, 59–61 Hz, DVI-D: 31–68 kHz, 59–61 Hz	DisplayPort: 31–76 kHz, 59–61 Hz, DVI-D: 31–68 kHz, 59–61 Hz	31–76 kHz, 59–61 Hz (VGA text 69–71 Hz)	
Analogue (H, V)		31–68 kHz, 55–61 Hz	24–80 kHz, 49–76 Hz	31–64 kHz, 55–61 Hz	
Sync formats		Separate	Separate, composite	Separate	
USB	USB upstream ports	1× Type B, USB 2.0 Gen. 1	1× Type B, USB 2.0 Gen. 1	–	
	USB downstream ports	2× Type A, USB 2.0 Gen. 1	2× Type A, USB 2.0 Gen. 1	–	
Audio	Speakers	2× 1 W	–	2× 0.5 W	
	Inputs	3.5-mm stereo jack socket	–	3.5-mm stereo jack socket	
	Outputs	3.5-mm headphone jack	–	3.5-mm headphone jack	
Power supply	Mains voltage	AC 100–120 V/200–240 V, 50/60 Hz	AC 100–120 V/200–240 V, 50/60 Hz	AC 100–120 V/200–240 V, 50/60 Hz	
	Max. power consumption	39 W	45 W	21 W	
	Typical power consumption	12 W	13 W	9 W	
	Standby/power switch is off	Less than 0.3 W/0 W	Less than 0.3 W/0 W	Less than 0.5 W	
Features and functionalities	Colour modes	Paper, Movie, sRGB, User 1, User 2	Paper, Movie, sRGB, User 1, User 2, DICOM	Paper, sRGB, User 1, User 2, DICOM	
	Auto EcoView	◆	◆	◆	
	EcoView Sense	◆	–	–	
	Look-up table	10	10	10	
	Overdrive	–	◆	–	
	Pivot functionality	◆	◆	◆	
	UpView	◆	–	–	
	Picture-in-picture/picture-by-picture	–/–	–/–	–/–	
	Integrated power supply unit	◆	◆	◆	
	Detachable stand	◆	◆	◆	
Settings	Adjustable via on-screen display	Brightness, contrast, gamma, Auto EcoView, EcoView Optimizer, colour mode, colour temperature, saturation, hue, scaling options, audio source	Brightness, contrast, gamma, Auto EcoView, EcoView Optimizer, colour mode, colour temperature, saturation, hue, Overdrive, scaling options	Brightness, contrast, gamma, Auto EcoView, colour mode, colour temperature, saturation, hue, scaling options	
	Dimensions and weight	Dimensions (W x H x D)	500×343.1–483.1×233 mm	465×453–535×208.5 mm	405×406.5–506.5×205 mm
		Dimensions (without stand, W x H x D)	500×326.5×54 mm	465×361×64 mm	405×334×61.5 mm
Net weight		5.6 kg	8.6 kg	5.6 kg	
Net weight (without stand)		3.3 kg	5.6 kg	3.8 kg	
Height adjustment		140 mm	82 mm	100 mm	
Tilt		35° to the back, 5° to the front	40° to the back, 0° to the front	30° to the back, 0° to the front	
Certifications and standards	Up-to-date information is available from EIZO Group companies and distribution partners in your country.	CE, CB, TCO certified 8.0, EPA Energy Star, TÜV/GS, TÜV certified ergonomics (including ISO 9241-307*), TÜV/Blue Low Light Content, TÜV/Flicker Free, EPEAT Gold, cTÜVus, EAC, FCC-B, CAN ICES-3(B), RCM, CCC, RoHS, China RoHS, WEEE	CE, CB, EPA Energy Star, TÜV/GS, TÜV certified ergonomics (including ISO 9241-307*), EPEAT Gold, cTÜVus, EAC, FCC-B, CAN ICES-3(B), RCM, CCC, RoHS, China RoHS, WEEE	CE, CB, EPA Energy Star, TÜV/GS, TÜV certified ergonomics (including ISO 9241-307*), EPEAT Gold, cTÜVus, TÜV/S, EAC, PSE, FCC-B, CAN ICES-3(B), RCM, VCCI-B, CCC, RoHS, China RoHS, WEEE	
	Accessories	Accessories included	Power cable, signal cable (DVI-D to DVI-D, DisplayPort to DisplayPort), Setup Guide	Power cable, signal cable (DVI-D to DVI-D, DSub to DSub), USB cable, Setup Guide	Power cable, signal cable (DSub to DSub, DVI-D to DVI-D), audio cable, Setup Guide
		Warranty	Five years** with an on-site exchange service***	Five years** with an on-site exchange service***	Five years** with an on-site exchange service***

* Zero pixel error guarantee for fully illuminated sub-pixels (partial image elements ISO 9241-307). Valid: six months from the date of purchase.

** Maximum of 30,000 hours of monitor usage time.

*** This service is only available in some European countries. For more information visit please your local EIZO website.

WORKING WITH THE BEST.

Well-known companies around the world rely on EIZO's FlexScan monitors.



TRIVAGO
CAMPUS
GERMANY

Products used: FlexScan EV2450 and EV2750

trivago, the world's largest hotel search platform, was on the lookout for an all-inclusive solution for the almost 2,100 employees at the company's new headquarters in Dusseldorf, Germany. Our FlexScan monitors impressed during extensive in-house tests with their outstanding quality and wide range of features, which is why the hotel search platform decided to purchase 1,550 FlexScan EV2450 monitors and 450 FlexScan EV2750 monitors. Every trivago employee now has two FlexScan EV2450 monitors on their desk. An EV2750 model is also available for special requirements such as data monitoring.

MIZUHO
SECURITIES
JAPAN

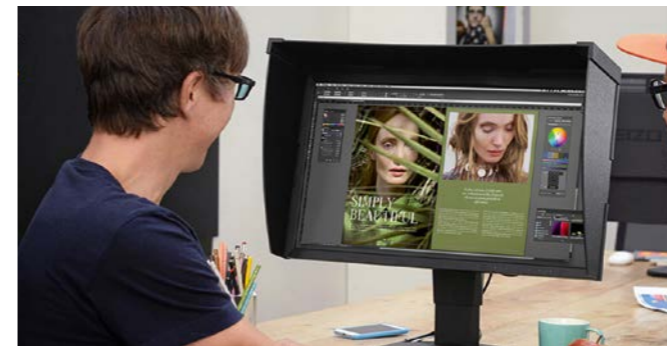


Product used: FlexScan EV2750

Mizuho Securities originally used eight rectangular 19-inch LCD monitors that were attached to arm mounts. They have now been replaced by four 27-inch FlexScan EV2750 monitors. Thanks to EIZO's flexible stand, Mizuho Securities can easily adjust the height of the monitors as well as rotate them into portrait position without the need for additional arm mounts. The EV2750 monitors also provide a practical picture-by-picture functionality that makes it possible to display eight individual display areas on just four screens.

OUR ENTIRE RANGE.

EIZO offers monitors for a wide variety of industries and application areas. While our FlexScan monitors are particularly suited for office use, other work areas require quite different specialisations.



ColorEdge

The EIZO ColorEdge series was developed specifically to meet the high requirements of creative users who work with photos, films and graphics. ColorEdge monitors are the specialists when it comes to colours, calibration and precision. They guarantee an unadulterated look to the files and make it possible to work with total colour accuracy.



CuratOR & RadiForce

CuratOR from EIZO offers complete medical solutions for modern operating theatres. RadiForce series of medical monitors meet the high requirements demanded by the fields of diagnostics and medical review.



DuraVision

The durable and reliable DuraVision monitors are best-suited to 24-hour operation and are used in maritime and industrial environments, as well as security and surveillance systems.



Raptor & Re/Vue

EIZO offers the most comprehensive range of monitors, recording and streaming solutions and graphics boards for air traffic control centres and towers, as well as training and simulation equipment for air traffic controllers. The numerous configuration options meet the requirements for any installation.

Austria, Hungary, Romania & Bulgaria
EIZO Austria GmbH

Pfarrgasse 87
1230 Wien
Phone: +43 1 6152886-10
www.eizo.at, www.eizo.hu

Belgium & Luxembourg
EIZO Europe GmbH

Antwerpsesteenweg 22
2860 Sint-Katelijne-Waver (Mechelen)
Phone: +32 15 645511
www.eizo.be

Czech Republic & Slovakia
EIZO Europe GmbH

Meteor Centre Office Park "B"
Sokolovská 100/94
186 00 Praha 8
Phone: +420 222 319 714
www.eizo.cz, www.eizomonitor.sk

Germany
EIZO Europe GmbH

Helmut-Grashoff-Str. 18
41179 Mönchengladbach
Phone: +49 2161 8210-0
www.eizo.de

Italy
EIZO Europe GmbH

Via Torino, 3/5
20814 – Varedo (MB)
Phone: +39 0362 1695250
www.eizo.it

The Netherlands
EIZO Europe GmbH

Dr. Holtropaan 34-36
5652 XR Eindhoven
Phone: +31 40 7600-360
www.eizo.nl

Scandinavia & Russia
EIZO Nordic AB

Lövängsvägen 14
SE-194 05 Upplands Väsby
Phone: +46 8 594 105 00
www.eizo.se

United Kingdom
EIZO Limited

Stylus House | London Road,
Bracknell | Berkshire
RG12 2UT
Phone: +44 1344 317 480
www.eizo.co.uk