

Video Conferencing Camera Shelf for Twin Pole Floor Stands

For more information please visit www.btechavmounts.com/BT7864

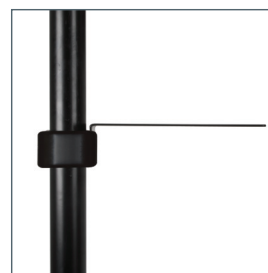
BT7864

BT7864

Video Conferencing Camera Shelf for Twin Pole Floor Stands

Designed to mount a video conferencing camera centrally between 2 poles

- Ideal for use with B-Tech Trolleys and Floor Stands
- Max load: 4kg (9lbs)
- Fits most VC cameras with 1/4 inch thread
- Ideal for Radvision® XT5000 Codec
- Features 100 x 100mm fixing points
- Can also be used with Nettop PCs with VESA® 75 x 75 fixings
- Compatible with ø50mm and ø60mm single and double attachment collars (sold separately)
- Available in a sleek Satin Black finish

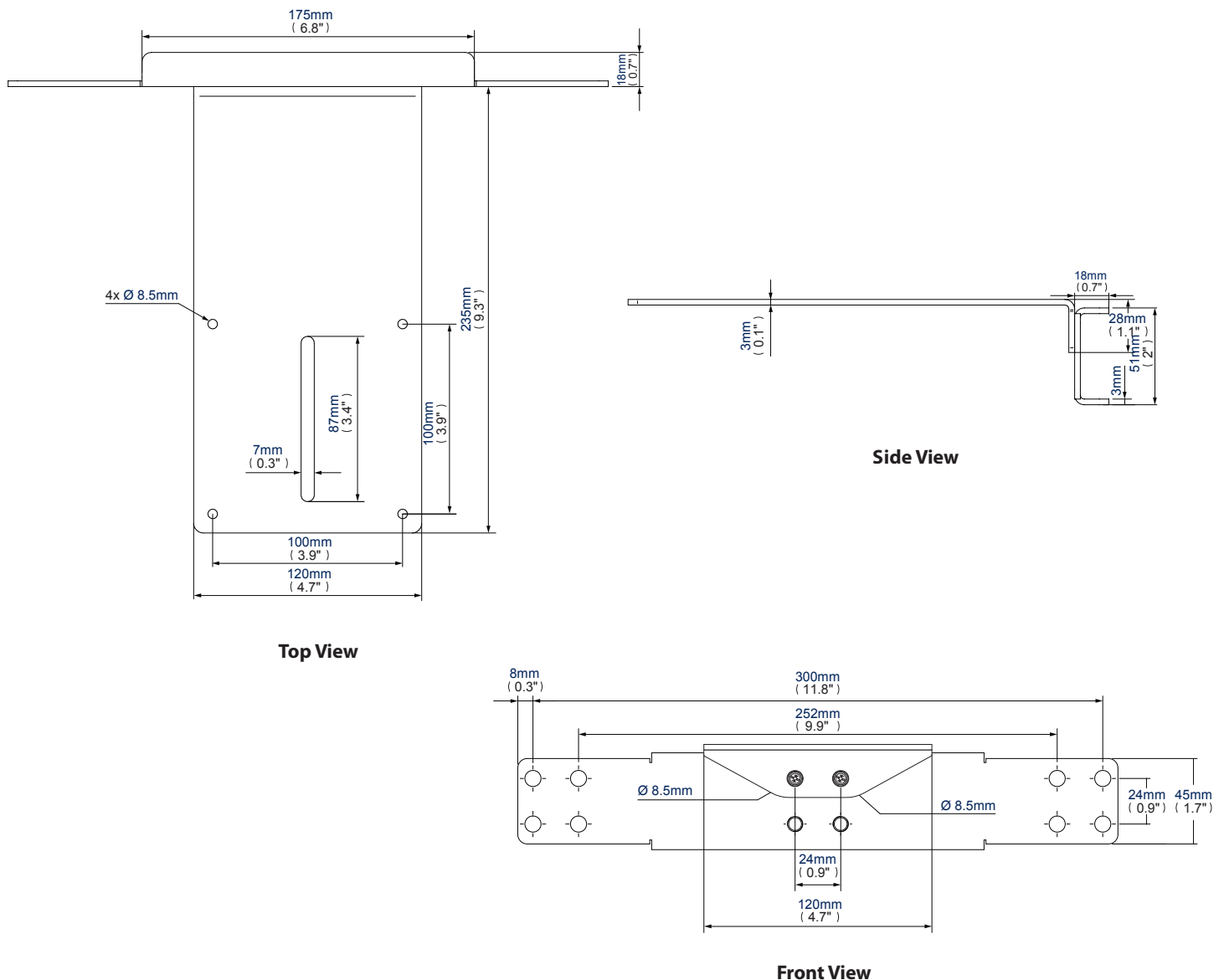


Compatible with ø50mm (BT7051) and ø60mm (BT7060) collars (sold separately)

Video Conferencing Camera Shelf for Twin Pole Floor Stands

For more information please visit www.btechavmounts.com/BT7864

BT7864



Colour:	Order Ref:	EAN Code:
Black	BT7864/B	5019318759123

**This information is intended as a guide only and reflects the current specification at the time of print.
B-Tech accepts no liability for the accuracy of the information contained in this document.**