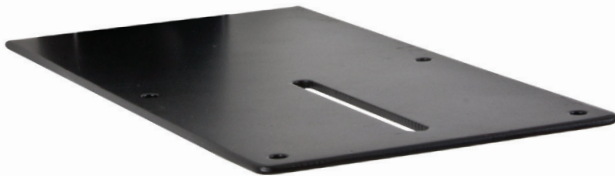


## Video Conferencing Camera Shelf

For more information please visit [www.btechavmounts.com/BT7863](http://www.btechavmounts.com/BT7863)

BT7863

2



### BT7863

#### Video Conferencing Camera Shelf

Designed to mount video conferencing cameras to poles

- Fits most VC cameras with 1/4 inch thread
- Features 100 x 100mm fixing points
- Ideal for Radvision® XT5000 Codec
- Can also be used with Nettop PCs with VESA® 75 x 75 fixings
- Max load 4kg (8.8lbs)
- Compatible with BT7052 and BT7260 Accessory Collars for use with ø50mm or ø60mm poles
- Can also be wall mounted using a BT7075
- Available in Black



BT7863  
Video Conferencing  
Camera Shelf

BT7850  
ø50mm Pole

BT7052  
Accessory Collar



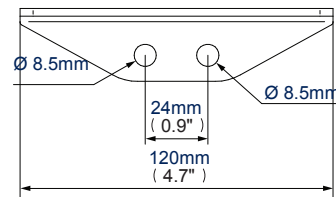
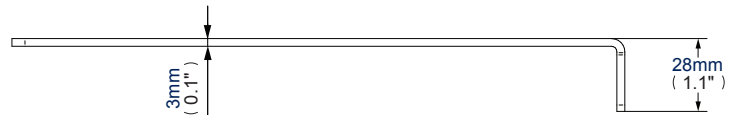
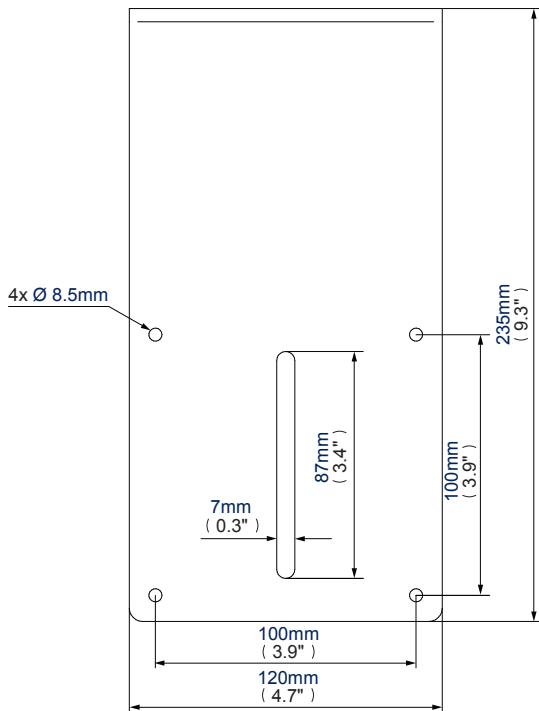
Compatible with BT7052 and BT7260 Accessory Collars for use with ø50mm or ø60mm poles (sold separately)



# Video Conferencing Camera Shelf

 For more information please visit [www.btechavmounts.com/BT7863](http://www.btechavmounts.com/BT7863)

**BT7863**



**Top View**

**Side View**

**Back View**

Colour:	Order Ref:	EAN Code:
Black	BT7863/B	5019318759116

**This information is intended as a guide only and reflects the current specification at the time of print. B-Tech accepts no liability for the accuracy of the information contained in this document.**