

# HDMI® or Component Standalone Capture Device – 1080p

USB2HDCAPS



\*actual product may vary from photos

DE: Bedienungsanleitung - [de.startech.com](http://de.startech.com)

FR: Guide de l'utilisateur - [fr.startech.com](http://fr.startech.com)

ES: Guía del usuario - [es.startech.com](http://es.startech.com)

IT: Guida per l'uso - [it.startech.com](http://it.startech.com)

NL: Gebruiksaanwijzing - [nl.startech.com](http://nl.startech.com)

PT: Guia do usuário - [pt.startech.com](http://pt.startech.com)

For the most up-to-date information, please visit: [www.startech.com](http://www.startech.com)

## FCC Compliance Statement

This equipment has been tested and found to comply with the limits for a Class B digital device, pursuant to part 15 of the FCC Rules. These limits are designed to provide reasonable protection against harmful interference in a residential installation. This equipment generates, uses and can radiate radio frequency energy and, if not installed and used in accordance with the instructions, may cause harmful interference to radio communications. However, there is no guarantee that interference will not occur in a particular installation. If this equipment does cause harmful interference to radio or television reception, which can be determined by turning the equipment off and on, the user is encouraged to try to correct the interference by one or more of the following measures:

- Reorient or relocate the receiving antenna.
- Increase the separation between the equipment and receiver.
- Connect the equipment into an outlet on a circuit different from that to which the receiver is connected.
- Consult the dealer or an experienced radio/TV technician for help

This device complies with part 15 of the FCC Rules. Operation is subject to the following two conditions: (1) This device may not cause harmful interference, and (2) this device must accept any interference received, including interference that may cause undesired operation.

Changes or modifications not expressly approved by StarTech.com could void the user's authority to operate the equipment.

## Industry Canada Statement

This Class B digital apparatus complies with Canadian ICES-003.

Cet appareil numérique de la classe [B] est conforme à la norme NMB-003 du Canada.

CAN ICES-3 (B)/NMB-3(B)

## Use of Trademarks, Registered Trademarks, and other Protected Names and Symbols

This manual may make reference to trademarks, registered trademarks, and other protected names and/or symbols of third-party companies not related in any way to StarTech.com. Where they occur these references are for illustrative purposes only and do not represent an endorsement of a product or service by StarTech.com, or an endorsement of the product(s) to which this manual applies by the third-party company in question. Regardless of any direct acknowledgement elsewhere in the body of this document, StarTech.com hereby acknowledges that all trademarks, registered trademarks, service marks, and other protected names and/or symbols contained in this manual and related documents are the property of their respective holders.

# Table of Contents

<b>Product Diagram .....</b>	<b>1</b>
Front View .....	1
Rear View .....	1
<b>Introduction .....</b>	<b>2</b>
Packaging Contents .....	2
System Requirements.....	2
<b>Standalone Operation .....</b>	<b>3</b>
<b>PC Operation.....</b>	<b>3</b>
Hardware Installation .....	3
<b>Software Installation .....</b>	<b>4</b>
<b>Software Operation .....</b>	<b>7</b>
Launching Application.....	7
Application Operation.....	7
<b>Network Streaming Operation.....</b>	<b>9</b>
<b>Technical Support .....</b>	<b>10</b>
<b>Warranty Information.....</b>	<b>10</b>

# Product Diagram

## Front View



1. RCA Audio Input Port
2. Component Video Input Port
3. HDMI Audio/Video Input Port
4. USB 2.0 Port

## Rear View



1. HDMI Audio/Video Output Port
2. LAN Port
3. Mode Switch
4. SD SLOT
5. Record Button

# Introduction

## Packaging Contents

- 1 x Capture Device
- 1 x USB 2.0 Cable
- 1 x HDMI Cable
- 1 x Driver CD
- 1 x Instruction Manual

## System Requirements

### For Standalone Operation:

- SD Card

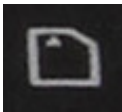
### For PC Operation:

- Computer system with:
  - Available USB 2.0 port
  - Microsoft® Windows 8/8.1 (32/64bit) / 7 (32/64bit) / Vista (32/64bit)

**Note: The USB2HDCAPS product will not record digitally encrypted content.**

# Standalone Operation

1. Insert your **SD Card** into the **SD slot**.
2. Connect the included **USB 2.0 Cable** from the **USB 2.0 Port** on the **USB2HDCAPS** to any USB power source.
3. Set the Mode Switch to Standalone Operation.



4. Using the required **audio/video cabling** (HDMI cable not included), connect your **audio/video source** (DVD, DVR, VCR, etc.) to the **USB2HDCAPS** using either the **HDMI input port** or the **Component video / RCA Audio input ports**, depending on your **audio/video source**.
5. (Optional) If you would like to connect a live HDMI display to view what is being captured, connect an HDMI cable (not included) from the **HDMI audio/video output port** on the **USB2HDCAPS** to an HDMI display.
6. When you are ready to record the audio/video source, press the **Record Button** on the **USB2HDCAPS** to begin the recording process.
7. When you are ready to stop recording the audio/video source, press the **Record Button** a second time.
8. Once the recording process has completed, each video clip will be saved on your SD card in M2TS format.

# PC Operation

## Hardware Installation

1. Using the included **USB 2.0 cable**, connect the **USB2HDCAPS** to an available USB port on your **computer system**.
2. Set the Mode Switch to PC Operation.



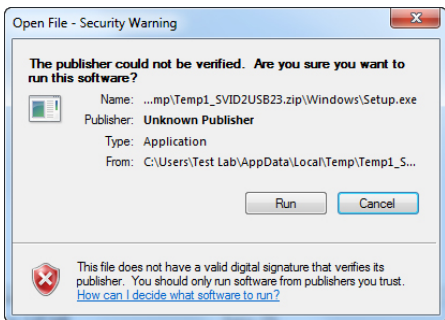
- Using the required **audio/video cabling** (HDMI cable not included), connect your **audio/video source** (DVD, DVR, VCR, etc.) to the **USB2HDCAPS** using either the **HDMI input port** or the **Component video / RCA Audio input ports**, depending on your **audio/video source**.
- (Optional) If you would like to connect a live HDMI display to view what is being captured, connect an HDMI cable (not included) from the **HDMI audio/video output port** on the **USB2HDCAPS** to an HDMI display.
- Hardware installation is now complete.

## Software Installation

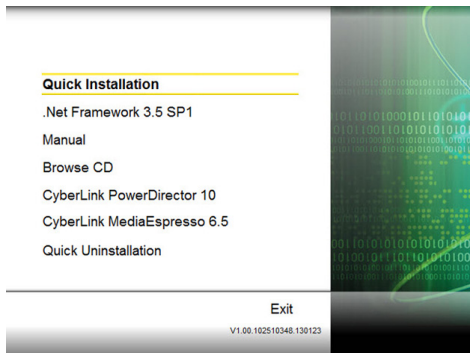
**Note:** Please ensure the Hardware Installation steps have been completed prior to beginning the Software Installation steps.

**After Hardware Installation, the “Found New Hardware Wizard” will open. Click “Cancel” to close the window.**

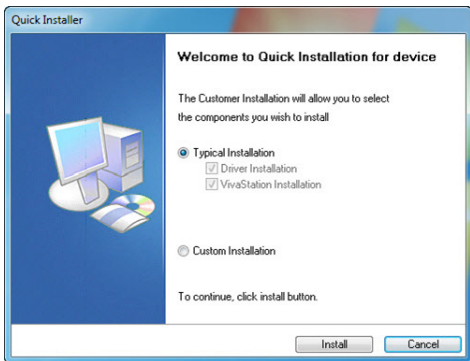
- Download the latest drivers from StarTech.com.
- Locate the Setup(.exe) application. This file will be located in the Windows directory in the downloaded folder.
- Double click the Setup(.exe) to begin software installation. If a Windows Security dialog box appears, click the “Run” or “Install this driver software anyway” button to proceed.



4. Select Quick Installation from the menu that appears. The installation will begin.

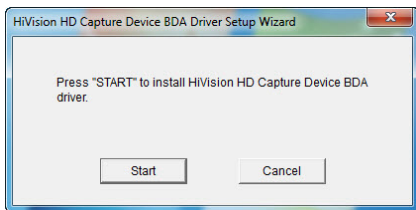


5. Select Typical Installation and click Install.

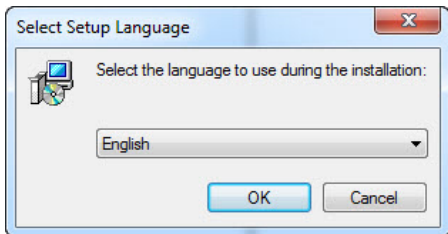




6. You will receive a request to start HiVision HD Capture. Click the Start button to continue.

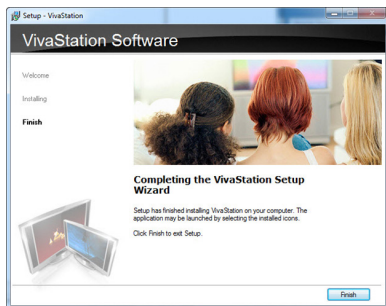


7. You will be asked to select a language for installation. Select your desired language and click OK.



8. Follow the prompts to complete the VivaStation installation. When prompted to, click Finish.

**Note:** You will be required to restart your computer.



# Software Operation

## Launching Application

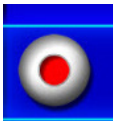
1. Once installation is complete, an icon will be created on your desktop called "VivaStation." Click this icon to launch the software.
2. Upon launching the software, you will be prompted to select the device and the source to import. Select "HD Capture Device" as the device. For the source input, select the type of device that you are capturing (HDMI, Component, etc.).
3. You will now see your video source displayed in the VivaStation window.

## Application Operation

The Option Bar at the bottom of the VivaStation window allows for many user adjustments. These adjustments are outlined below:

### Record

To record video to your computer, click the red Record button.



**Note:** To stop recording, click the red Record button again.

### SnapShot

To take a screenshot of the video source on your computer, click the SnapShot button.



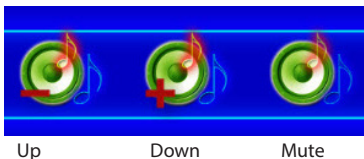
### Ratio

To toggle between available Aspect Ratios, click the Ratio button.



## Volume Control

To adjust the volume, click the Volume buttons.



## Playback

To access files saved on your computer, click the Playback button.



## Schedule Recordings

To schedule times when you want the device to start and stop recording, click the Schedule Records button.



## Video Source

To change the input, click the Video Source button and select the type of device that you are capturing (HDMI, Component, etc.).



## Additional Settings

To view the menus listed above using a more complex visual interface and to access advanced settings (frames per seconds, paths where files are saved, etc.), click the Additional Settings button.



## Network Streaming Operation

1. Connect the included **USB 2.0 Cable** from the **USB 2.0 Port** on the **USB2HDCAPS** to any USB power source.
2. Set the Mode Switch to Network Streaming Operation.
3. Using the required **audio/video cabling** (HDMI cable not included), connect your **audio/video source** (DVD, DVR, VCR, etc.) to the **USB2HDCAPS** using either the **HDMI input port** or the **Component video / RCA Audio input ports**, depending on your **audio/video source**.



4. (Optional) If you would like to connect a live HDMI display to view what is being streamed, connect an HDMI cable (not included) from the **HDMI audio/video output port** on the **USB2HDCAPS** to an HDMI display.
5. Using a network cable (not included), connect the **LAN Port** on the **USB2HDCAPS** to an available LAN port on your network device, such as a router or switch.

**For complete network operation instructions, please download the full product manual at [StarTech.com](http://StarTech.com).**

# Technical Support

StarTech.com's lifetime technical support is an integral part of our commitment to provide industry-leading solutions. If you ever need help with your product, visit [www.startech.com/support](http://www.startech.com/support) and access our comprehensive selection of online tools, documentation, and downloads.

For the latest drivers/software, please visit [www.startech.com/downloads](http://www.startech.com/downloads)

## Warranty Information

This product is backed by a two year warranty.

In addition, StarTech.com warrants its products against defects in materials and workmanship for the periods noted, following the initial date of purchase. During this period, the products may be returned for repair, or replacement with equivalent products at our discretion. The warranty covers parts and labor costs only. StarTech.com does not warrant its products from defects or damages arising from misuse, abuse, alteration, or normal wear and tear.

### Limitation of Liability

In no event shall the liability of StarTech.com Ltd. and StarTech.com USA LLP (or their officers, directors, employees or agents) for any damages (whether direct or indirect, special, punitive, incidental, consequential, or otherwise), loss of profits, loss of business, or any pecuniary loss, arising out of or related to the use of the product exceed the actual price paid for the product. Some states do not allow the exclusion or limitation of incidental or consequential damages. If such laws apply, the limitations or exclusions contained in this statement may not apply to you.

Hard-to-find made easy. At StarTech.com, that isn't a slogan. It's a promise.

StarTech.com is your one-stop source for every connectivity part you need. From the latest technology to legacy products — and all the parts that bridge the old and new — we can help you find the parts that connect your solutions.

We make it easy to locate the parts, and we quickly deliver them wherever they need to go. Just talk to one of our tech advisors or visit our website. You'll be connected to the products you need in no time.

Visit [www.startech.com](http://www.startech.com) for complete information on all StarTech.com products and to access exclusive resources and time-saving tools.

*StarTech.com is an ISO 9001 Registered manufacturer of connectivity and technology parts. StarTech.com was founded in 1985 and has operations in the United States, Canada, the United Kingdom and Taiwan servicing a worldwide market.*