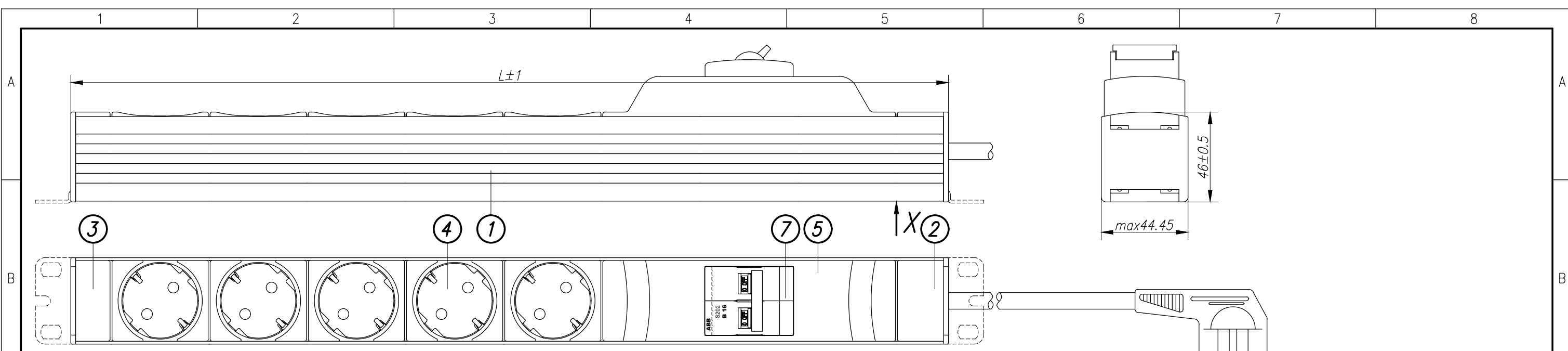
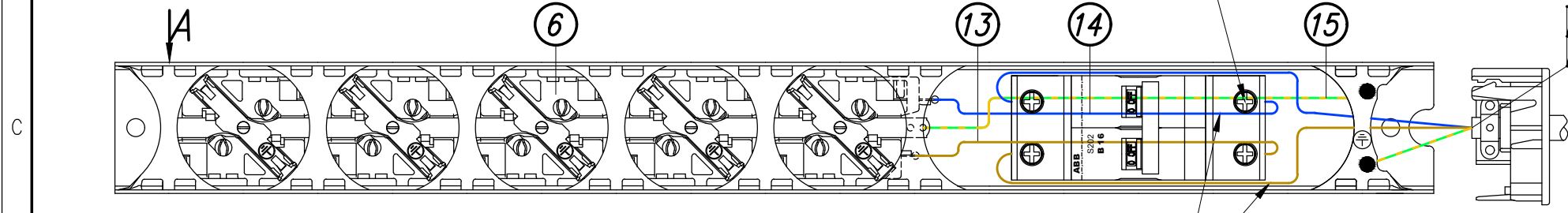


Disclosure and photocopying of this document, exploitation and communication of its contents are not permitted, unless permission is expressly granted. All rights are reserved.



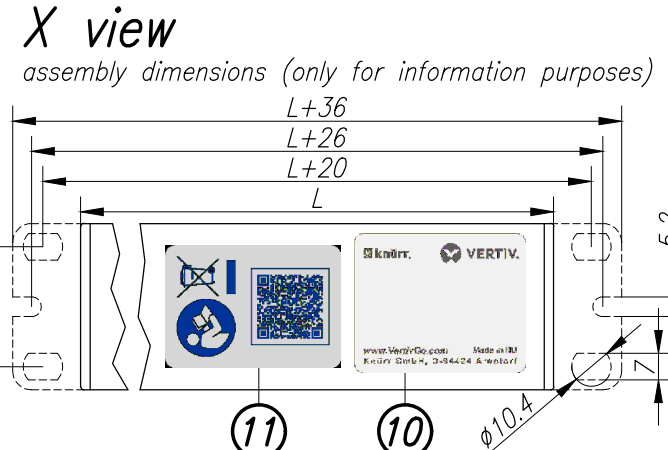
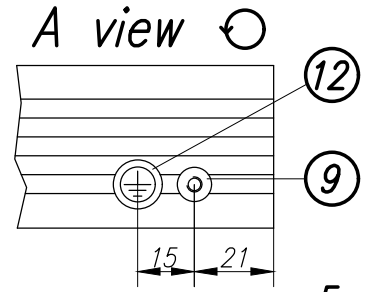
Internal wiring scheme, inlets and outlets shown frontside down

Csavarok meghúzási nyomatéka 2.8 Nm.  
The tightening torque is 2.8 Nm.



N<sub>blue</sub>  
L<sub>brown</sub>  
PE<sub>green-y.</sub>

Vezetékeket a ház alján vezetni!  
Cable lead at the bottom of the chassis.



Example of label:



**Technical data:**  
- DIN 49440 SCHUKO socket 16A  
socket spacing 50mm, torsion of sockets 45°  
- with circuit breaker B16A

- Operating temperature: 0 ... +50 °C

Type selection							
Drawing no.	Description	L (mm)	Color of chassis	No. of sockets	Gross weight (kg)	Net weight (kg)	External dimensions of packing box (mm)
03.308.013.1	DIS-EEV CEE7/7-16A 13P MCB	847	RAL7035 light grey	13	1,92	1,66	1030x60x100
03.308.009.1	DIS-EEV CEE7/7-16A 9P MCB	647	RAL7035 light grey	9	1,60	1,40	680x60x100
03.308.005.1	DIS-EEC CEE7/7-16A 5P MCB	447	RAL7035 light grey	5	1,30	1,13	620x60x100

A belső vezetékvezés komponensei. / Components of internal wiring.							
No.	Qty	Code	Description	Material	Weight (kg)	Length (mm)	
13	1	ST	Vezeték barna 1,5mm <sup>2</sup>	Electric cord brown	8.768.3855	L=160(EO-EV)	
14	1	ST	Vezeték kék 1,5mm <sup>2</sup>	Electric cord blue	8.768.3162	L=160(EO-EV)	
15	1	ST	Vezeték zöld-sárga 1,5mm <sup>2</sup>	Electric cord green-yellow	3.768.2674	L=240(EO-EO)	

**Load rating:**  
100-240 Vac, 50-60 Hz  
Input: 1x 16 A  
Output: 16 A

**Approvals/certificates:**  
- CE marking according to: LVD (low voltage directive), RoHS (restriction of hazardous substances)  
- BV-BG certification (factory inspected)  
- VDE-GS certification (factory inspected)

**Power cord:**  
Type: H05VV-F 3x1,5mm<sup>2</sup>, white  
Length: 2,5m  
Plug: CEE VII/7, DIN49441 Form2

**Material/Finish:**  
Chassis: closed sheet steel extrusion, zincplated, powder-coated texture  
Plastic parts: Vampamid 6 0024 VO (UL94) or similar, recyclable  
Internal conduction: brass conductor rails and copper wires  
Internal copper wires: H07V-K 1,5mm<sup>2</sup>

**Color:**  
Chassis:  
Plastic parts: RAL7035 light grey

**Packaging:**  
Packing box (csomagolódoboz)  
Supply schedule:  
Socket strip (1 piece)  
Mounting bracket (2 pieces) 3.768.2608  
User manual (1 piece) 03.300.999.1

	General tolerances		Finish		Material		Sheet 1/1
	ISO 2768-m						
	Drawn	06.01.2010	Name		Description		
Checked	06.01.2010	Kovács		DIS-EEV CEE7/7-16A MCB		Scale	
Approved		Szabó		Drawing no.			
Rev.		Change	Date	Name			Gross weight kg
Platine:		File:		Knürr GmbH Mariakirchener Straße 38 D-94424 Arnstorf Tel: +49 (0) 87 23-27-0		Net weight kg	
						External dimensions of packing box mm	

Weitergabe sowie Vervielfältigung dieser Unterlage, Verwertung und Mitteilung ihres Inhalts nicht gestattet, soweit nicht ausdrücklich zugestanden. Alle Rechte vorbehalten.