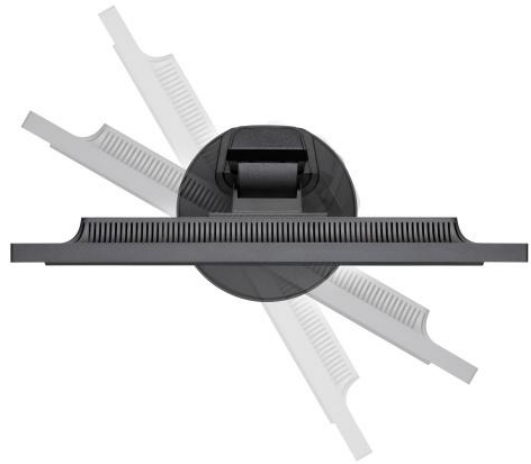


MultiSync® E221N NEC LCD 22" Commercial Display

Datasheet



NEC MultiSync® E221N Ultra-Thin Bezel - The Office Workhorse, combining sleek and elegant design with health-conscious performance

The 22" ultra-thin bezel display targeting reliable office productivity, performance and quality, fulfils demand for future-ready design. Enduring productivity requires high attention to healthcare. Thanks to the built-in Low Blue Light Plus technology your eyes are protected and ensure overall well-being. It filters out only the hazardous blue light emissions and eliminates flickering, keeping the eye safe while ensuring a true-to-life display colour performance from all viewing angles. The LED backlight panel with AH-IPS technology supports a high display brightness of 250 cd/m² and in parallel lowers power consumption.

The ultra-narrow bezel display reduces the display footprint without compromising on screen size and gives an office a fresh professional interior with its sleek and elegant design.

Benefits

Future-Ready Design – best in form and function design with 3-sided 1 mm ultra-thin bezel gives an office a fresh professional interior.

Protecting your eyes from strain and damage – built-in Low Blue Light Plus technology filters out hazardous blue light emissions and eliminates flickering protecting your eyes against cataracts and macular degeneration without compromise to true-to-life display colour performance.

Ergonomic Office – full height adjustability (110 mm), swivel, tilt and pivot functionality ensures perfect individual ergonomic set-up.

Business Class Image Quality – IPS (AH-IPS) panel provides the very best viewing angles as well as noticeably better colour production.

Your environmental and social responsibility – NEC's TCO 7 and ENERGY STAR 7 certified display is environmentally designed with minimal hazardous materials meeting the growing demand for more sustainable technologies.

Product Information

Product Name	MultiSync® E221N
Product Group	NEC LCD 22" Commercial Display
Order Code	60004223 (WH) , 60004224 (BK)

Display

Panel Technology	IPS TFT with W-LED backlight
Screen Size [inch/cm]	21.5 / 54.62
Screen Aspect Ratio	16:9
Pixel Pitch [mm]	0.248
Brightness (typ.) [cd/m ²]	250
Contrast Ratio (typ.)	1000:1
Viewing Angle [°]	178 horizontal / 178 vertical (typ. at contrast ratio 10:1)
Response Time (typ.) [ms]	6
Colours [Mio.]	16.77

Synchronisation Rate

Horizontal Frequency [kHz]	31.5 - 81.1
Vertical Frequency [Hz]	56 - 76

Resolution

Optimum Resolution	1920 x 1080 at 60 Hz
--------------------	----------------------

Connectivity

Digital	1 x DisplayPort; 1 x HDMI
Analog	1 x D-sub 15 pin

Electrical

Power Consumption on Mode [W]	15 (Eco Mode 1); 17 (typ.); 25 (max.)
Power Savings Mode [W]	0.29

Environmental Conditions

Operating Temperature [°C]	+5 to +25
Operating Humidity [%]	20 to 80

Ergonomics

Height adjustable stand [mm]	110
Screen Tilt [°]	5 to 20
Screen Swivel [°]	45 to 45

Mechanical

Bezel Width [mm]	1 (left and right); 1 (top)
Dimensions (W x H x D) [mm]	488.1 x 359.8 x 213.9
Weight [kg]	With stand: 5
VESA Mounting [mm]	100 x 100

Additional Features

Special Characteristics	DisplayPort; EcoModes; LED Backlight Technology; NaViSet Administrator 2
Colour Versions	Black Front Bezel, Black Back Cabinet; White Front Bezel, White Back Cabinet
Cable Management	yes
Plug and Play	VESA DDC2Bi
Audio	1W + 1W (De-activateable); Headphone Jack
Shipping Content	Power Cable; Setup Guide Signal Cable: DisplayPort; VGA - VGA
Safety and Ergonomics	EnergyStar 7.0; Flicker-free; Low Blue Light; RoHS; TCO 7.0; TÜV Ergonomics; TÜV GS; WEEE

Green Features

Energy Efficiency	Carbon Footprint Meter / Carbon Savings Meter; ECOMode; Energy efficiency class: A
Ecological Standards	Energy Star 7.0; RoHS compliant; TCO 7.0; WEEE



This document is © 2017 NEC Display Solutions Europe GmbH.

All rights reserved in favour of their respective owners. All hardware and software names are brand names and/or registered trademarks of the respective manufacturers. All specifications are subject to change without notice. Errors and omissions are excepted. 18.01.2017