

USB 2.0 to DVI External Video Adapter USB 2.0 to VGA External Video Adapter

USB2DVIE2

USB2VGAE2



*actual product may vary from photos

DE: Bedienungsanleitung - de.startech.com

FR: Guide de l'utilisateur - fr.startech.com

ES: Guía del usuario - es.startech.com

IT: Guida per l'uso - it.startech.com

NL: Gebruiksaanwijzing - nl.startech.com

PT: Guia do usuário - pt.startech.com

For the most up-to-date information, please visit: www.startech.com

FCC Compliance Statement

This equipment has been tested and found to comply with the limits for a Class B digital device, pursuant to part 15 of the FCC Rules. These limits are designed to provide reasonable protection against harmful interference in a residential installation. This equipment generates, uses and can radiate radio frequency energy and, if not installed and used in accordance with the instructions, may cause harmful interference to radio communications. However, there is no guarantee that interference will not occur in a particular installation. If this equipment does cause harmful interference to radio or television reception, which can be determined by turning the equipment off and on, the user is encouraged to try to correct the interference by one or more of the following measures:

- Reorient or relocate the receiving antenna.
- Increase the separation between the equipment and receiver.
- Connect the equipment into an outlet on a circuit different from that to which the receiver is connected.
- Consult the dealer or an experienced radio/TV technician for help.

Use of Trademarks, Registered Trademarks, and other Protected Names and Symbols

This manual may make reference to trademarks, registered trademarks, and other protected names and/or symbols of third-party companies not related in any way to StarTech.com. Where they occur these references are for illustrative purposes only and do not represent an endorsement of a product or service by StarTech.com, or an endorsement of the product(s) to which this manual applies by the third-party company in question. Regardless of any direct acknowledgement elsewhere in the body of this document, StarTech.com hereby acknowledges that all trademarks, registered trademarks, service marks, and other protected names and/or symbols contained in this manual and related documents are the property of their respective holders.

Table of Contents

Introduction	1
Packaging Contents	1
System Requirements.....	1
Installation	2
Driver Installation.....	2
Multiple USB Video Adapter Installation	3
Verifying Installation	3
Configuring the USB Video Adapter	4
Display ID	4
Display Resolution	4
Display Rotation	4
Display Modes	5
Identify Monitors.....	6
Multi-Display Control Panel.....	6
Display Settings	6
Specifications	7
Supported Resolutions	7
Technical Support	8
Warranty Information	8

Introduction

The USB DVI or VGA Multi Monitor External Video Adapter turns an available USB 2.0 port into an external video card DVI or VGA port - providing high quality dual-display or multi-monitor capability that can be used in a variety of laptop or desktop applications to increase your productivity.

The device also offers the option of running up to five additional displays simultaneously (using five Multi Monitor External Video Adapters). Each connected adapter can be used to further extend the desktop or mirror the image shown on the existing display - all without having to open the computer case to install an additional video card.

Packaging Contents

- 1 x USB External Video Adapter
- 1 x Driver and Software CD
- 1 x Instruction Manual

System Requirements

- Available USB 2.0 port
- **Single Video Adapter:**
 - CPU: Intel/AMD single core 1.5GHz or higher
 - RAM: 512MB or more
- **2-3 Video Adapters:**
 - CPU: Intel/AMD single core 2.4GHz or higher
 - RAM: 1GB or more
- **4-5 Video Adapters:**
 - CPU: Intel/AMD dual core 2.0GHz or higher
 - RAM: 2GB or more
- Microsoft® Windows® 2000/XP/Vista/7 (32/64-bit)

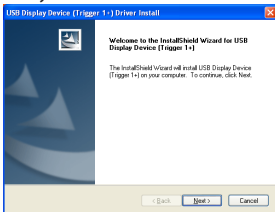
Installation

Please ensure that the driver installation is complete **before** the physical installation of the USB 2.0 Video Adapter.

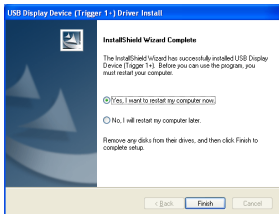
Driver Installation

1. Insert the Driver CD into your CD/DVD-ROM drive.
2. If the installation program does not begin automatically, locate the Setup.exe application. This file will be located in the root directory of the Driver CD.
3. Executing the Setup.exe application will launch the following screen. Please click on Next:

***Ensure that the USB Video Adapter is not connected to the host computer.**



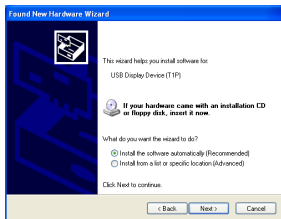
4. Once the Windows has finished the driver installation, it will prompt you to restart the computer. Select "Yes, I want to restart my computer now", and click the "Finish" button.



5. While the computer is restarting, connect the video cable running from the secondary monitor/display to the USB adapter. Turn the monitor/display on.
6. Once Windows has fully loaded, plug the USB Video Adapter into an available USB 2.0 port of your PC or Notebook.
7. A Hardware Installation Wizard dialog will show up, please select "No, not this time" and click "Next" to continue.



8. Please select “Install the software automatically (Recommended)”. And click “Next” to continue.



9. Click “Finish” to complete the Hardware Wizard.

Multiple USB Video Adapter Installation

Ensure you have the latest version of the drivers installed, otherwise, please download them from the StarTech.com website (www.startech.com).

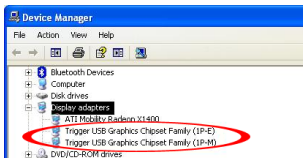
1. Complete the installation steps, up to when you plug in the first USB Video Adapter.
2. Connect another monitor/display to the video connector of the second USB Video Adapter, then turn on the display.
3. Connect the USB type A connector on the second USB Video Adapter to an available USB 2.0 port on the host computer. The driver installation will begin automatically.

Repeat these steps for each additional USB Video Adapter you wish to install. Once all USB Video Adapters are installed, reboot the computer. After rebooting, you may be prompted to reboot one final time; please do so.

Verifying Installation

From the main desktop, right-click on “My Computer” (“Computer” in Vista/7), then select Manage. In the new Computer Management window, select Device Manager from the left window panel.

Double-click the Display Adapters and Universal Serial Bus Controllers category.



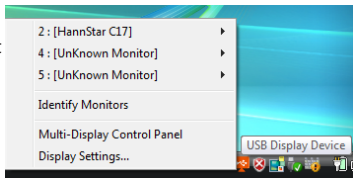
Configuring the USB Video Adapter

Look for the USB Video Adapter icon (🖥️) on your Windows Start bar. Right-click this icon to access the variety of functions associated to the adapter.

Display ID

The USB Video Adapter supports the VESA defined DDC/EDID standard. The utility will show the display device ID whenever it is attached to the USB Video Adapter.

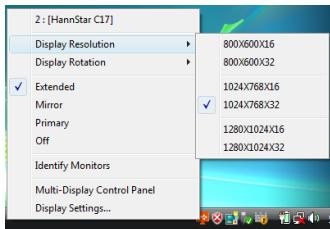
If there is no display device attached to the USB Video Adapter, an “Unknown Monitor” ID will be shown. In some cases, if the attached display device does not support EDID, the ID will also be defined as “Unknown Monitor”.



Display Resolution

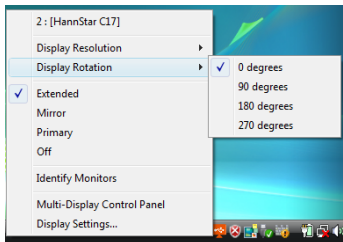
Select the desired video display resolution for the connected monitor.

The default setting resolution is: 1024 x 768 * 32-bit.



Display Rotation

4 options available: 0°, 90°, 180°, 270° when used with the Extended or Primary display modes. It is a useful function for some rotatable display devices.

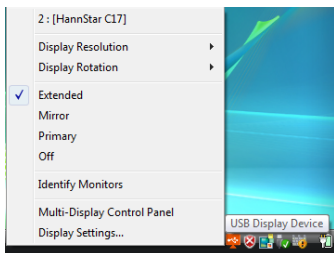


Display Modes

“EXTENDED” DISPLAY MODE (DEFAULT)

A default display mode; this feature allows the attached USB Video Adapter enabled display to work as an “Extended” display to the on-board display. The extended working space improves work efficiency.

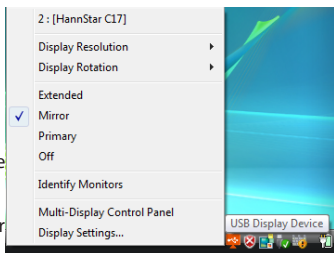
You may change the relative position of this extended display through the Display Settings.



“MIRROR” DISPLAY MODE

This feature allows the same content from the on-board display to be duplicated (mirroring) to the USB Video Adapter enabled display.

The screen resolution setting on the USB Video Adapter enabled device will match the on-board displays's resolution. For example, if the on-board displays's resolution is 1024x768*32-bit, and the USB Video Adapter will use the same resolution.

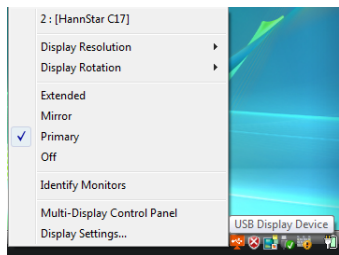


“PRIMARY” DISPLAY MODE

A unique feature to allow the USB Video Adapter to act as the main working display. The USB Video Adapter will work as the main graphics adapter on the system. The on-board display will work as the extended display.

Please be advised that some display utilities and drivers that shipped with certain AGP and built-in display adapters may prevent this option from working on some systems.

You may be able to disable the other utility program (usually found in the same toolbar located on the bottom right hand corner) to make this function work properly.

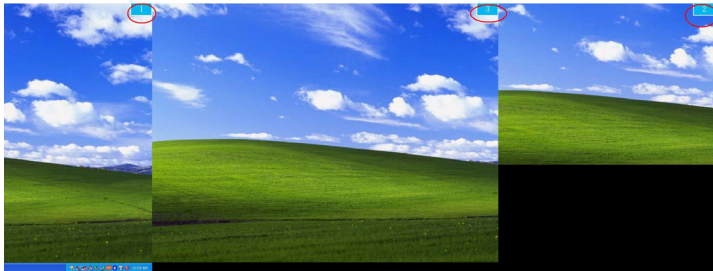


“OFF” DISPLAY MODE

This option disables the video output from the USB Video Adapter.

Identify Monitors

Easy display identification via an overlay will be shown in the upper right corner of all attached display devices.

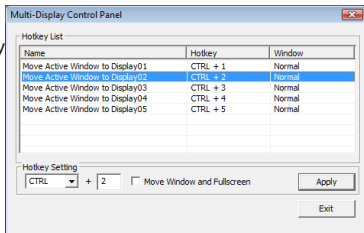


Multi-Display Control Panel

A unique feature to allow quicker and simpler management of a multi-display environment. A series of hotkeys to quickly move the active window or mouse cursor to the desired display (either on-board or each USB Video Adapter).

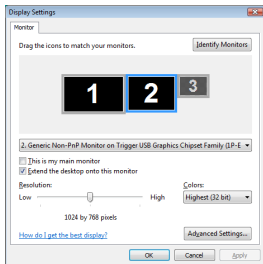
The default setting of the hotkeys can be found in the Hotkey List of "Multi-Display Control Panel".

For example: Ctrl + 2 means: to move the window to Display 2



Display Settings

Quick access to the Windows "Display Settings" window.



Specifications

	USB2DVIE2	USB2VGAE2
Host Interface	USB 2.0	
Connectors	1 x USB type A male 1 x DVI (29-pin) female	1 x USB type A male 1 x DE-15 VGA female
Onboard Memory	16 MB	
Operating Temperature	0°C ~ 70°C (32°F ~ 158°F)	
Storage Temperature	15°C ~ 30°C (32°F ~ 122°F)	
Humidity	45% ~ 85% RH	
Dimension (LxWxH)	90.5mm x 52.5mm x 18.0mm	75.0mm x 42.0mm x 18.0mm
Weight	92g	80g
Compatible Operating Systems	Windows XP (32/64-bit), Vista (32/64-bit), Windows 7 (32/64-bit), Windows 8/8.1 (32/64-bit), Windows 10 (32/64-bit)	

Supported Resolutions

Resolution	Color Depth	Refresh Rate
800x600	32-bit	60/75Hz
1024x768	32-bit	60/75Hz
1152x864	32-bit	60Hz
1280x768	32-bit	60Hz
1280x800	32-bit	60Hz
1280x960	32-bit	60Hz
1280x1024	32-bit	60Hz
1400x1050	32-bit	60Hz
1440x900	32-bit	60Hz
1680x1050	32-bit	60Hz

Technical Support

StarTech.com's lifetime technical support is an integral part of our commitment to provide industry-leading solutions. If you ever need help with your product, visit www.startech.com/support and access our comprehensive selection of online tools, documentation, and downloads.

For the latest drivers/software, please visit www.startech.com/downloads

Warranty Information

This product is backed by a one year warranty.

In addition, StarTech.com warrants its products against defects in materials and workmanship for the periods noted, following the initial date of purchase. During this period, the products may be returned for repair, or replacement with equivalent products at our discretion. The warranty covers parts and labor costs only. StarTech.com does not warrant its products from defects or damages arising from misuse, abuse, alteration, or normal wear and tear.

Limitation of Liability

In no event shall the liability of StarTech.com Ltd. and StarTech.com USA LLP (or their officers, directors, employees or agents) for any damages (whether direct or indirect, special, punitive, incidental, consequential, or otherwise), loss of profits, loss of business, or any pecuniary loss, arising out of or related to the use of the product exceed the actual price paid for the product. Some states do not allow the exclusion or limitation of incidental or consequential damages. If such laws apply, the limitations or exclusions contained in this statement may not apply to you.

Hard-to-find made easy. At StarTech.com, that isn't a slogan. It's a promise.

StarTech.com is your one-stop source for every connectivity part you need. From the latest technology to legacy products — and all the parts that bridge the old and new — we can help you find the parts that connect your solutions.

We make it easy to locate the parts, and we quickly deliver them wherever they need to go. Just talk to one of our tech advisors or visit our website. You'll be connected to the products you need in no time.

Visit www.startech.com for complete information on all StarTech.com products and to access exclusive resources and time-saving tools.

StarTech.com is an ISO 9001 Registered manufacturer of connectivity and technology parts. StarTech.com was founded in 1985 and has operations in the United States, Canada, the United Kingdom and Taiwan servicing a worldwide market.