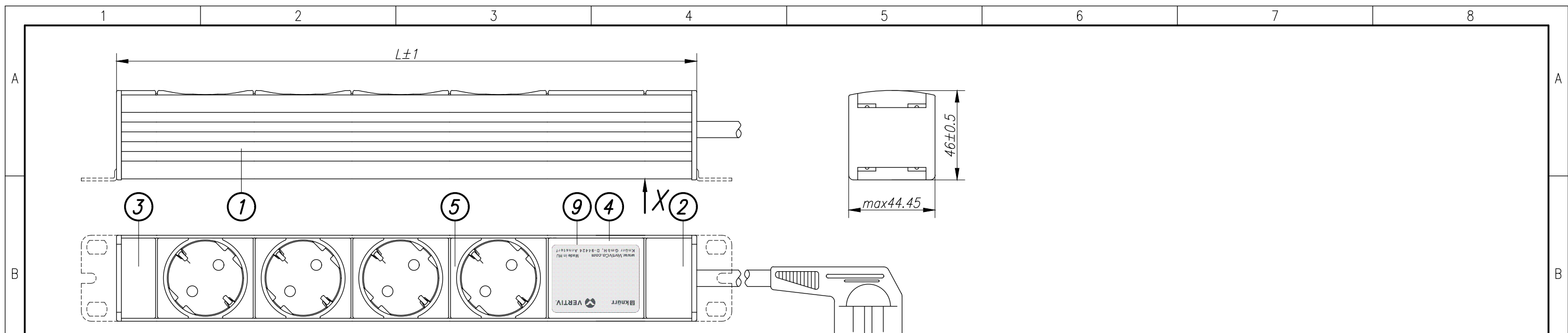
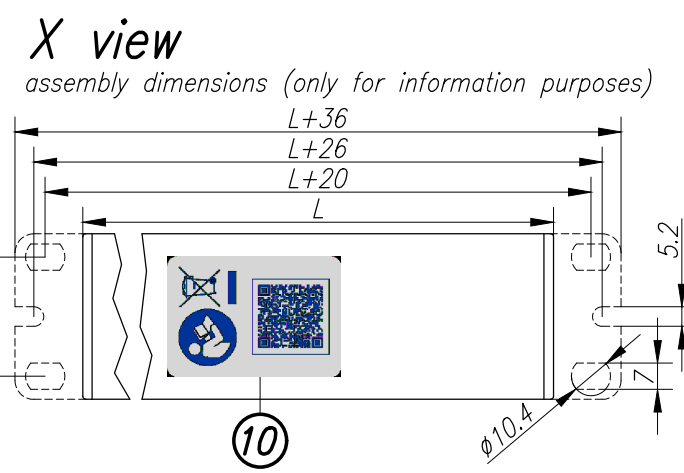
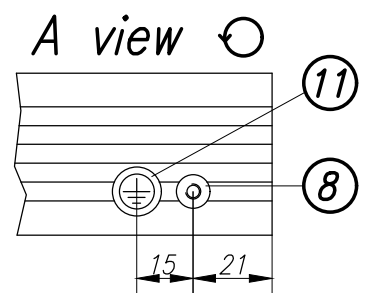
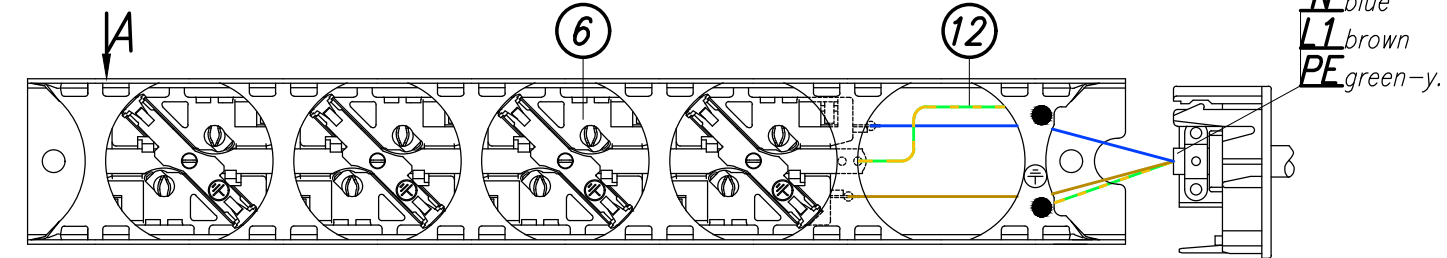


Disclosure and photocopying of this document, exploitation and communication of its contents are not permitted, unless permission is expressly granted. All rights are reserved.

Weitergabe sowie Vervielfältigung dieser Unterlage, Verwertung und Mitteilung ihres Inhalts nicht gestattet, soweit nicht ausdrücklich zugestanden. Alle Rechte vorbehalten.



Internal wiring scheme, inlets and outlets shown frontside down



Type selection

Drawing no. / Description	L (mm)	Color of chassis	No. of sockets	Gross weight (kg)	Net weight (kg)	External dimensions of packing box (mm)
03.300.015.6 DIS-EEV CEE7/7-16A 15P	847	RAL2003 pastel orange	15	1,7	1,47	985x60x75
03.300.015.1 DIS-EEV CEE7/7-16A 15P	847	RAL7035 light grey	15	1,7	1,47	985x60x75
03.300.011.6 DIS-EEV CEE7/7-16A 11P	647	RAL2003 pastel orange	11	1,37	1,19	680x60x75
03.300.011.1 DIS-EEV CEE7/7-16A 11P	647	RAL7035 light grey	11	1,37	1,19	680x60x75
03.300.007.6 DIS-EEC CEE7/7-16A 7P	447	RAL2003 pastel orange	7	1,06	0,91	480x60x80
03.300.007.4 DIS-EEC CEE7/7-16A 7P	447	RAL5018 turquoise blue	7	1,06	0,91	480x60x80
03.300.007.1 DIS-EEC CEE7/7-16A 7P	447	RAL7035 light grey	7	1,06	0,91	480x60x80
03.300.004.6 DIS-EEV CEE7/7-16A 4P	297	RAL2003 pastel orange	4	0,85	0,7	480x60x80
03.300.004.1 DIS-EEV CEE7/7-16A 4P	297	RAL7035 light grey	4	0,85	0,7	480x60x80

Technical data:
 - DIN 49440 SCHUKO socket 16A
 socket spacing 50mm, torsion of sockets 45°
 - Operating temperature: 0 ... +50 °C

Example of label:

Power cord:
 Type: H05W-F 3x1,5mm², white
 Length: 2,5m
 Plug: CEE VII/7, DIN49441 Form2

Packaging:
 Packing box (csomagolódoboz)
 Supply schedule:
 Socket strip (1 piece)
 Mounting bracket (2 pieces) 3.768.2608
 User manual (1 piece) 03.300.999.1

Load rating:
 100-240 Vac, 50-60 Hz
 Input: 1x 16 A
 Output: 16 A

Material/Finish:
 Chassis: closed sheet steel extrusion, zincplated, powder-coated texture
 Plastic parts: Vampamid 6 0024 VO (UL94) or similar, recyclable
 Internal conduction: brass conductor rails and copper wires
 Internal copper wires: H07V-K 1,5mm²
 Color:
 Chassis:
 Plastic parts: RAL7035 light grey

Approvals/certificates:
 - CE marking according to: LVD (low voltage directive),
 RoHS (restriction of hazardous substances)
 - BV-BG certification (factory inspected)
 - VDE-GS certification (factory inspected)

12	1	ST	Vezeték zöld-sárga 1,5mm ²	Electric cord green-yellow	3.768.2634	L=100(EO-EO)
----	---	----	---------------------------------------	----------------------------	------------	--------------

A belső vezetékvezés komponensei. / Components of internal wiring.

<p>Dimensions in mm</p>	General tolerances	Finish	Material	Sheet 1/1
	ISO 2768-m			
Rev.	Change	Date	Name	Description DIS-EEV CEE7/7-16A Drawing no. 03.300.004.X-015.X Scale Gross weight kg Net weight kg External dimensions of packing box mm
B	18027	29.06.17	Gali	
Knürr GmbH Mariakirchener Straße 38 D-94424 Arnstorf Tel: +49 (0) 87 23-27-0				
Platine:				File: