

Datasheet

HP ProDesk 400 G4 Microtower PC



Redesigned and future ready

Designed to fit the modern workspace now and in the future with a 27% smaller chassis than HP's previous generation, the stylishly redesigned, reliable, and secure HP ProDesk 400 MT is a powerful PC with performance that's scalable to grow with your business.



HP recommends Windows 10 Pro.

Powerful options

- Power through your day with high-performance 7th Gen Intel® Core™ i3/i5/i7 processors² unleashed optional Intel® Optane™ memory and SSDs³, up to 32 GB of DDR4 memory³, and discrete graphics³.

Expansion that extends your investment

- The full value of your investment comes with expansion that extends the life of your PC. The HP ProDesk 400 MT has three bays and three full-height slots, and optional legacy ports³ to connect to multiple HP displays³.

Connection hub

- With eight total USB ports, two video outputs, and optional Bluetooth™³ connectivity, the HP ProDesk 400 MT becomes a hub for all your devices in the office.

Tested and ready

- The reliable HP ProDesk 400 MT experienced 120,000 hours of the HP Total Test Process and now has an optional dust filter³ to help extend the life of your PC by reducing airborne particulate intake in the most demanding work environments.
- Power through your day with Windows 10 Pro¹ and the powerful HP ProDesk 400 MT with built-in security, collaboration, and connectivity.
- HP Client Security Suite Gen3⁴ features HP Multi-Factor Authenticate, HP Device Access Manager⁵, HP SpareKey, and HP Password Manager. These tools work to keep data out of reach and defend against theft, attacks, and unauthorized users.
- Keep productivity high and downtime low with HP BIOSphere Gen3⁶ firmware-level automation. Your PCs have extra protection thanks to automatic updates and security checks.
- The HP Manageability Integration Kit⁷ helps speed up image creation and management of hardware, BIOS, and security through Microsoft System Center Configuration Manager.
- HP WorkWise⁸ is office intelligence rolled into one smartphone app to provide PC security, real-time PC performance information, and simplified printer driver installation for HP PC users.
- Greatly improve the transfer rates of user's data, voice, and video communication when connecting over challenged LAN or Wi-Fi networks with HP Velocity.
- Enjoy always-on, included self-help support built right into your PC, for the life of your PC⁹.
- Rest easy with a PC that goes the distance and is designed to pass HP Total Test Process.
- Audio connections are easy with the Universal Audio Jack that supports mic in, headphones, and CTIA headsets with the same connector.
- HP Touchpoint Manager offers customers simple, useful tools and services from a single cloud-based solution for managing data, security, and a wide array of branded devices¹⁰.
- Simplify technical support with Helpdesk by HP Care. Rely on cost-effective expertise that's available 24x7, covering multiple brands, devices and operating systems¹¹.
- Help maximize your cash flow with the use of best-in-class hardware and services for a monthly subscription that allow you to replace your PC with a brand new one every two or three years¹².

HP ProDesk 400 G4 Microtower PC Specifications Table

HP recommends Windows 10 Pro.



Form Factor	Microtower
Available Operating System	Windows 10 Pro 64 – HP recommends Windows 10 Pro. ¹ Windows 10 Home 64 ¹ Windows 10 Home Single Language 64 ¹ Windows 7 Professional 64 (available through downgrade rights from Windows 10 Pro) ³ FreeDOS 2.0
Available Processors^{4,5}	Intel® Core™ i7-7700 with Intel HD Graphics 630 (3.6 GHz, up to 4.2 GHz with Intel Turbo Boost, 8 MB cache, 4 cores); Intel® Core™ i5-7500 with Intel HD Graphics 630 (3.4 GHz, up to 3.8 GHz with Intel Turbo Boost, 6 MB cache, 4 cores); Intel® Core™ i3-7100 with Intel HD Graphics 630 (3.9 GHz, 3 MB cache, 2 cores); Intel® Pentium® G4560 with Intel HD Graphics 610 (3.5 GHz, 3 MB cache, 2 cores); Intel® Celeron™ G3930 with Intel HD Graphics 610 (2.9 GHz, 2 MB cache, 2 cores); Intel® Core™ i7-6700 with Intel HD Graphics 530 (3.4 GHz, up to 4.0 GHz with Intel Turbo Boost, 8 MB cache, 4 cores); Intel® Core™ i5-6500 with Intel HD Graphics 530 (3.2 GHz, up to 3.6 GHz with Intel Turbo Boost, 6 MB cache, 4 cores); Intel® Core™ i3-6100 with Intel HD Graphics 530 (3.7 GHz, 3 MB cache, 2 cores); Intel® Pentium® G4400 with Intel HD Graphics 510 (3.3 GHz, 3 MB cache, 2 cores); Intel® Celeron™ G3900 with Intel HD Graphics 510 (2.8 GHz, 2 MB cache, 2 cores)
Chipset	Intel® H270
Maximum Memory	Up to 32 GB DDR4-2400 SDRAM ⁶ Standard memory note: Transfer rates up to 2400 MT/s
Memory slots	2 DIMM
Internal Storage	500 GB up to 2 TB 3.5" SATA HDD (7200 rpm) ⁷ 128 GB up to 256 GB SATA SSD ⁷
Available Graphics	Integrated: Intel® HD Graphics 530; Intel® HD Graphics 630; Intel® HD Graphics 610 ^{9,10,11} Discrete: NVIDIA® GeForce® GT 730 (2 GB)
Audio	Conexant CX20632 codec with universal audio jack and 2W internal speaker, headset and headphone front ports (3.5 mm), multi-streaming capable
Communications	LAN: Realtek RTL8111 HSH GbE LOM network connection WLAN: Intel® 7265 802.11ac (2x2) wireless with Bluetooth® M.2 combo card non-vPro™ ⁸
Expansion Slots	Turbo Drive (M.2 PCIe); 1 M.2 2230 for wireless NIC; PCI Express x16 (v3.0)(wired as a x4) 4.2", full height 6.6" length, 35 W max power; PCI Express x16 (v3.0) 4.2" full height, 6.6" length, 75 W max power
Ports and Connectors	Front: Universal audio jack with CTIA headset support; 2 USB 3.1 Gen 1; 1 SD 3 card reader (optional) Back: 1 audio out connector; 1 DisplayPort™; 1 VGA; 4 USB 2.0; 2 USB 3.1 Gen 1; 1 audio in connector; 1 RJ-45; 1 power connector
Internal Drive Bays	One 9 mm slim ODD; Secure digital (SD) 3 reader; One 3.5" or 2.5" HDD; One 3.5" HDD
Input Device	HP USB Business Slim Keyboard; HP USB Grey Keyboard ¹² HP USB Mouse ¹²
Available Software	HP business PCs are shipped with a variety of software titles including: HP BIOSphere Gen3, CyberLink Power Media Player, Native Miracast Support, HP ePrint Driver, HP Support Assistant. Please refer to this product's quick spec document for a full list of preinstalled software. ^{13,14,15}
Security Management	Trusted Platform Module TPM 2.0 Embedded Security Chip (SLB9670 – Common Criteria EAL4+ Certified); SATA 0,1 port disablement (via BIOS); Drive lock; Serial, USB enable/disable (via BIOS); Power-on password (via BIOS); Setup password (via BIOS); Support for chassis padlocks and cable lock devices; Integrated hood sensor
Power	80 PLUS Bronze: 180 W, up to 85% efficient, active PFC; 80 PLUS Bronze: 310 W, up to 85% efficient, active PFC
Dimensions	17 x 33.8 x 27.4 cm
Weight	5.47 kg
Energy Efficiency Compliance	ENERGY STAR® certified and EPEAT® registered configurations available ¹⁶
Warranty	1-year (1-1-1) limited warranty and service offering includes 1 year of parts, labor and on-site repair. Terms and conditions vary by country. Certain restrictions and exclusions apply.

HP ProDesk 400 G4 Microtower PC

HP recommends Windows 10 Pro.

Accessories and services (not included)

HP USB Slim Business Keyboard



Get fast data entry and quick USB connectivity with the HP USB Business Slim Keyboard, designed to complement the 2015 class of HP Business PCs.

Product number: N3R87AA

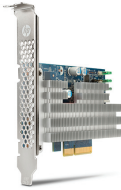
HP USB 1000dpi Laser Mouse



Obtain the speed and accuracy of laser tracking in a simple, elegant design with the HP USB 1000dpi Laser Mouse – for the latest in laser sensing technology.

Product number: QY778AA

HP 256GB Turbo Drive G2 PCIe SSD Drive



Reduce boot up, calculation, and graphics response times and revolutionize how your HP Business Desktop handles large files with the HP 256GB Turbo Drive G2 PCIe SSD Drive, a remarkably affordable and innovative storage solution.

Product number: T7W25AA

HP 16GB DDR4-2400 DIMM



Boost the capabilities of your HP Business Desktop PC and improve system performance and application responsiveness with low-power, high-speed DDR4 memory from HP.

Product number: Z9H57AA

HP 3 year Next Business Day Onsite Hardware Support for Desktops



Receive 3 years of next business day onsite HW Support from an HP-qualified technician for your computing device, if the issue cannot be solved remotely.

Product number: U6578E

Learn more at
www.hp.eu/hpoptions

HP ProDesk 400 G4 Microtower PC

HP recommends Windows 10 Pro.

Messaging Footnotes

- ¹ Not all features are available in all editions or versions of Windows. Systems may require upgraded and/or separately purchased hardware, drivers, software or BIOS update to take full advantage of Windows functionality. Windows 10 is automatically updated, which is always enabled. ISP fees may apply and additional requirements may apply over time for updates. See <http://www.windows.com>.
- ² Multi-Core is designed to improve performance of certain software products. Not all customers or software applications will necessarily benefit from use of this technology. Performance and clock frequency will vary depending on application workload and your hardware and software configurations. Intel's numbering is not a measurement of higher performance.
- ³ Sold separately or as an optional feature.
- ⁴ HP Client Security Suite Gen3 requires Windows and Intel® 7th Gen processors.
- ⁵ HP Multi Factor Authenticate requires 7th Generation Intel® Core™ processor, Intel® integrated graphics, and Intel® WLAN.
- ⁶ HP BIOSphere Gen3 features may vary depending on the PC platform and configurations.
- ⁷ HP Manageability Integration Kit is planned to be available first quarter 2017 and can be downloaded from <http://www8.hp.com/us/en/ads/clientmanagement/overview.html>.
- ⁸ HP WorkWise smartphone app will soon be available as a free download on the App Store and Google Play.
- ⁹ Requires Windows and internet access.
- ¹⁰ HP Touchpoint Manager requires purchase of a subscription and supports Android™, iOS and Windows 7 or higher operating systems and PCs, notebooks, tablets and smartphones from various manufacturers. Not available in all countries see www.hp.com/touchpoint for availability information.
- ¹¹ HP Care Services are optional. Service levels and response times for HP Care Pack Services may vary depending on your geographic location. Service starts on date of hardware purchase. Restrictions and limitations apply. For details, visit www.hp.com/go/cpc. HP services are governed by the applicable HP terms and conditions of service provided or indicated to Customer at the time of purchase. Customer may have additional statutory rights according to applicable local laws, and such rights are not in any way affected by the HP terms and conditions of service or the HP Limited Warranty provided with your HP Product.
- ¹² Financing and service offerings available through Hewlett-Packard Financial Services Company and its subsidiaries and affiliates (collectively HPFSC) in certain countries and is subject to credit approval and execution of standard HPFSC documentation. Subscriptions to use are available for 24 or 36 month terms. Rates and terms are based on customer's credit rating, offering types, services and/or equipment type and options. Not all customers may qualify. Not all services or offers are available in all countries. Other restrictions may apply. HPFSC reserves the right to change or cancel this program at any time without notice.

Technical specifications disclaimers

- ¹ Not all features are available in all editions or versions of Windows. Systems may require upgraded and/or separately purchased hardware, drivers, software or BIOS update to take full advantage of Windows functionality. Windows 10 is automatically updated, which is always enabled. ISP fees may apply and additional requirements may apply over time for updates. See <http://www.windows.com>.
- ² Some devices for academic use will automatically be updated to Windows 10 Pro Education with the Windows 10 Anniversary update. Features vary; see <https://aka.ms/ProEducation> for Windows 10 Pro Education feature information.
- ³ This system is preinstalled with Windows 7 Pro software and also comes with a license and media for Windows 10 Pro software. You may only use one version of the Windows software at a time. Switching between versions will require you to uninstall one version and install the other version. You must back up all data (files, photos, etc.) before uninstalling and installing operating systems to avoid loss of your data.
- ⁴ Multicore is designed to improve performance of certain software products. Not all customers or software applications will necessarily benefit from use of this technology. Performance and clock frequency will vary depending on application workload and your hardware and software configurations. Intel's numbering is not a measurement of higher performance.
- ⁵ Your product does not support Windows 8 or Windows 7. In accordance with Microsoft's support policy, HP does not support the Windows 8 or Windows 7 operating system on products configured with Intel and AMD 7th generation and forward processors or provide any Windows 8 or Windows 7 drivers on <http://www.support.hp.com>.
- ⁶ Due to the non-industry standard nature of some third-party memory modules, we recommend HP branded memory to ensure compatibility. If you mix memory speeds, the system will perform at the lower memory speed.
- ⁷ For storage drives, GB = 1 billion bytes. TB = 1 trillion bytes. Actual formatted capacity is less. Up to 30 GB (for Windows 10) is reserved for system recovery software.
- ⁸ Wireless cards are optional or add-on features and requires separately purchased wireless access point and internet service. Availability of public wireless access points limited. The specifications for the 802.11ac WLAN are draft specifications and are not final. If the final specifications differ from the draft specifications, it may affect the ability of the notebook to communicate with other 802.11ac WLAN devices.
- ⁹ Intel® HD Graphics 530: integrated on 6th gen Core™ i7/i5/i3 processors
- ¹⁰ Intel® HD Graphics 630: integrated on 7th gen Core™ i7/i5/i3 processors and Pentium® G4620, 4600, 4600T
- ¹¹ Intel® HD Graphics 610: integrated on Pentium® G4560, G4560T, Celeron™ G3950, G3930, G3930T
- ¹² Sold separately or as an optional feature.
- ¹³ HP BIOSphere with Sure Start available only on business PCs with HP BIOS. HP BIOSphere Gen 3 requires Intel® 7th generation processors.
- ¹⁴ Miracast is a wireless technology your PC can use to project your screen to TVs, projectors, and streaming media players that also support Miracast. You can use Miracast to share what you're doing on your PC and present a slide show. For more information: <http://windows.microsoft.com/en-us/windows-8/project-wireless-screen-miracast>.
- ¹⁵ HP ePrint Driver requires an Internet connection to HP web-enabled printer and HP ePrint account registration (for a list of eligible printers, supported documents and image types and other HP ePrint details, see www.hp.com/go/eprintcenter). Requires optional broadband module. Broadband use requires separately purchased service contract. Check with service provider for coverage and availability in your area. Separately purchased data plans or usage fees may apply. Print times and connection speeds may vary.
- ¹⁶ EPEAT® registered where applicable. EPEAT registration varies by country. See www.epeat.net for registration status by country.

Learn more at
www.hp.eu/desktops

Sign up for updates
www.hp.com/go/getupdated

Copyright © 2017 HP Development Company, L.P. The only warranties for HP products are set forth in the express limited warranty statements accompanying such products. Nothing herein should be construed as constituting an additional warranty. HP shall not be liable for technical or editorial errors or omissions contained herein.

Intel, Core, Pentium, Celeron and vPro are trademarks of Intel Corporation or its subsidiaries in the U.S. and/or other countries. Bluetooth is a trademark of its proprietor and used by HP Inc. under license. USB Type-C™ and USB-C™ are trademarks of USB Implementers Forum. ENERGY STAR is a registered trademark of the U.S. Environmental Protection Agency. DisplayPort™ and the DisplayPort™ logo are trademarks owned by the Video Electronics Standards Association (VESA®) in the United States and other countries. All Rights Reserved. All other trademarks are the property of their respective owners.

