



WAN-2201 Version: 1

20dBi 2.4GHz Directional Panel Antenna

The LevelOne WAN-2201 is a directional antenna for increased performance and reduced interference, operating on the 2.4 GHz frequency. WAN-2201 can be mounted either indoors or outdoors. The antenna's gain value is 20dBi, and if mounted outdoors the weatherproof housing can withstand temperatures from minus 30°C up to 60°C, as well as rain, snow, dust and other harsh conditions.

Key Features

- Provides 20dBi directional operation
- Directional operation provides extended point to point coverage
- For IEEE 802.11b/g/n/ac Wireless applications in 2.4GHz frequency range
- Low wind loading
- -40°C to 70°C operating temperature range

Specifications

System Specifications

Connectors and Cabling:

N Female

Impedance (Ohms):

50 Ohms

HPBW / Horizontal:

20°

HPBW / Vertical:

20°

VSWR:

? 2.0

Polarization:

Vertical

Wireless

Frequency Band:

2.3~2.7GHz

Performance



Return Loss:
? -10

Environment

Temperature (°C):
-30? ~ +60?

Humidity (Non-condensing):
95% @55°C

Physical Specifications

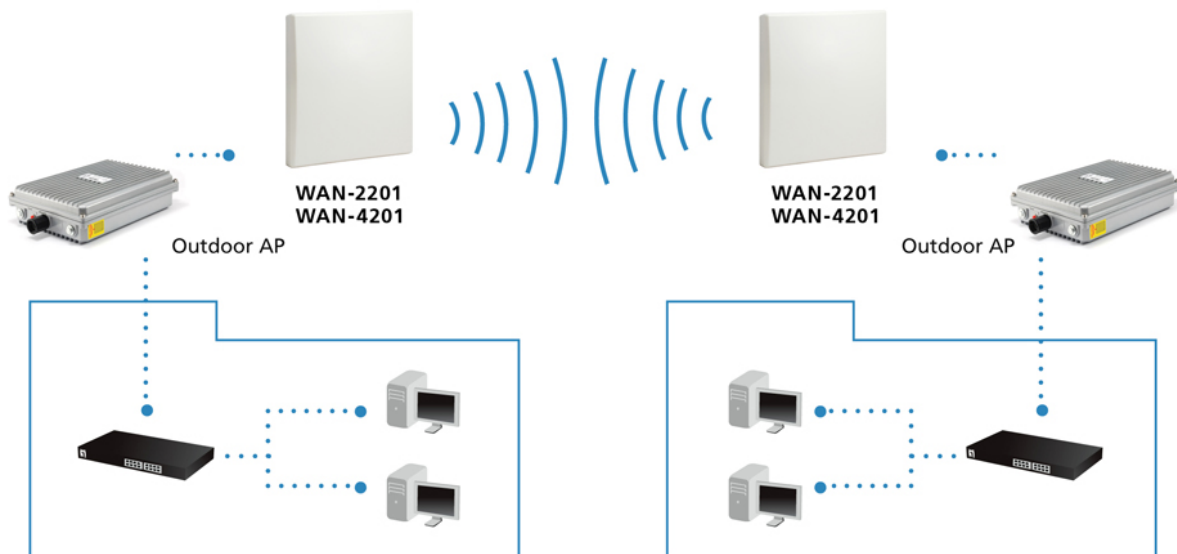
Dimensions (W x D x H mm):
410*410*44mm

Weight (g):
1680 g

Reliability

Survival Wind Speed:
50 m/s

Diagram



Order Information

WAN-2201

Package Contents

WAN-2201
Pole Mount Kit
Quick Installation Guide

Optional Accessory



ANC-4130

3m 400 Series N Plug to N Jack Antenna Cable



ANC-4160

6m 400 Series N Plug to N Jack Antenna Cable

No liability or responsibility for any errors or omissions in the content.
Specifications are subject to change without notice.
All mentioned brand names are registered trademarks and property of their owners.
Copyright © Digital Data Communications GmbH, Germany. All Rights Reserved.