



SPS SOHO+ Line-interactive UPS 500 VA - 2200 VA with dual USB charger

SPS SOHO+: Optimum electrical protection for office environments and systems

Salicru's **SPS SOHO+** series UPS systems stand out for their Line-interactive technology, compatibility with APFC (active power factor correction) loads and their dual USB charger on the front – all in a power range from 500 to 2,200 VA and versions with Schuko or IEC sockets.

Line-interactive systems use AVR (buck-boost) automatic voltage regulators to reduce possible fluctuations in input voltage, thereby lowering battery use, extending battery life and providing maximum backup if necessary.

They also feature a USB interface with HID protocol for control, parameter setting and computer shutdown/hibernation. Also available is a software package for the management and monitoring of associated environments, including virtualised systems.

The range consists of models with the following power ratings: 500, 650, 850, 1,200, 1,600 and 2,200 VA.

Features

- Line-interactive technology.
- Dual USB charger on the front (max. 2 Amp).
- Compatible with APFC (active power factor correction) loads.
- Complete LCD display with all information.
- Permanent stabilisation (AVR).
- USB communication interface with HID protocol.
- Monitoring software for Windows, Linux and Mac.
- Schuko or IEC sockets available.
- Resettable input thermal protection.
- Cold start function for start-up without mains.
- Automatic restart when power restored.
- Automatic frequency detector 50 or 60 Hz.
- Protection against overloads and short circuits.
- SLC Greenergy solution.



SPS SOHO+

Applications: Electrical security when doing business

Salicru's **SPS SOHO+** series UPS systems are ideal for the protection of computer/office environments from single-user management, design or communications stations to small networks composed of one server, various workstations and all associated peripherals. At the same time, they allow the charging of mobile devices through the two built-in USB ports. They are therefore suitable for shops, self-employed professionals, small offices, franchises, dealers, etc.

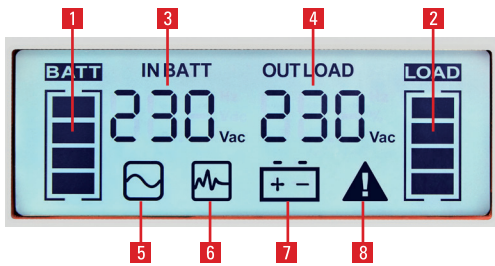


SPS SOHO+



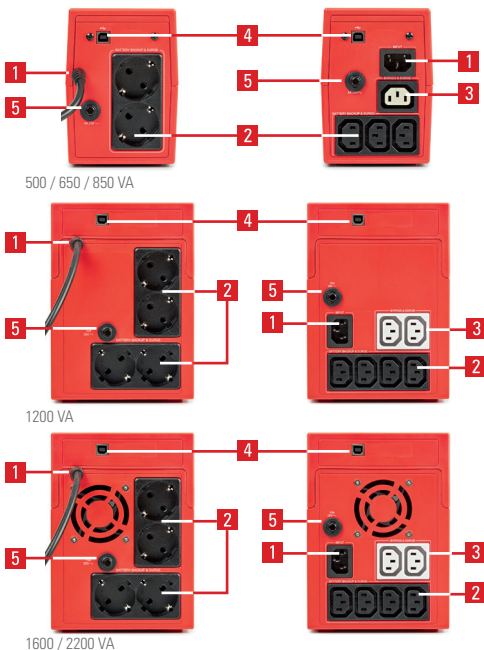
Line-interactive UPS 500 VA - 2200 VA with dual USB charger

Display



1. Battery level available (25-50-75-100% and end of backup).
2. Connected load level (25-50-75-100% and overload).
3. Input values (voltage, frequency) and battery (voltage).
4. Output values (voltage, frequency) and % of load.
5. Normal operation.
6. AVR operation (stabilisation).
7. Battery operation (power cut CA).
8. Device fault.

Connections



1. AC input.
2. UPS sockets.
3. Sockets with surge protection.
4. USB port.
5. Thermal input.

Control software

UPS monitoring and management software, allowing the orderly closing of files and programs in the event of prolonged power cuts. Valid for Windows, Unix, Linux and Mac.



TECHNICAL SPECIFICATIONS

MODEL		SPS SOHO+
TECHNOLOGY		Line-interactive
FORMAT		Tower
INPUT	Rated voltage	230 V
	Voltage range	162 ÷ 290 V
	Stabiliser	AVR (buck-boost)
	Frequency	50 / 60 Hz (auto-detection)
	Input protection	Resettable thermal cutoff
OUTPUT	Rated voltage	230 V
	Voltage accuracy (battery mode)	±10%
	Waveform (battery mode)	Pseudo sine wave
	Frequency	50/60 Hz (same as input)
	APFC compatibility loads	Yes
BATTERY	Socket type	Schuko or IEC
	Battery type	Pb-Ca sealed, AGM, maintenance-free
	Protection	Against deep discharge, against short circuit by means of fuse
COMMUNICATION	Recharge time	2-4 hours to 90%
	Interface	USB (HID protocol)
INDICATIONS	Downloadable monitoring software	For Windows, Linux and Mac
	LCD	Yes, multifunction
	Displayed values	Input and output voltage / Input and output frequency / Battery voltage / % of load
	Levels	Connected load / Overload / Battery / Low battery
OTHER FUNCTIONS	Operating modes	Normal / Stabilisation (AVR) / Battery / Fault
	Cold start (starting from batteries)	Yes
USB CHARGER	Automatic restart	Yes, after end of backup
	Quantity	2 ports
	Voltage	5 Vdc
GENERAL	Maximum current	2.0 A
	Operating temperature	0°C ÷ 40°C
	Relative humidity	Up to 95%, non-condensing
	Operating altitude	2,400 masl
STANDARDS	Noise level at 1 metre	<40 dB ⁽¹⁾
	Safety	EN 62040-1-1; EN-60950-1
	Electromagnetic compatibility (EMC)	EN 62040-2
	Operation	EN 62040-3
Quality and Environmental Management		ISO-9001 and ISO-14001

(1) <45 dB for 1600 and 2200 VA models

Information subject to change without notice.

RANGE

MODEL (Schuko socket)	CODE	POWER (VA / W)	NO. OF SOCKETS	DIMENSIONS (D x W x H mm)	WEIGHT (kg)
SPS 500 SOHO+	647CA000001	500 / 300	2	290 x 100 x 143	4.4
SPS 650 SOHO+	647CA000002	650 / 360	2	290 x 100 x 143	4.4
SPS 850 SOHO+	647CA000003	850 / 480	2	290 x 100 x 143	5.2
SPS 1200 SOHO+	647CA000004	1200 / 720	4	364 x 139 x 195	10.4
SPS 1600 SOHO+	647CA000005	1600 / 960	4	364 x 139 x 195	10.7
SPS 2200 SOHO+	647CA000006	2200 / 1200	4	364 x 139 x 195	11

MODEL (IEC socket)	CODE	POWER (VA / W)	NO. OF SOCKETS	DIMENSIONS (D x W x H mm)	WEIGHT (kg)
SPS 500 SOHO+ IEC	647CA000007	500 / 300	3 batt + 1 prot	290 x 100 x 143	4.4
SPS 650 SOHO+ IEC	647CA000008	650 / 360	3 batt + 1 prot	290 x 100 x 143	4.4
SPS 850 SOHO+ IEC	647CA000009	850 / 480	3 batt + 1 prot	290 x 100 x 143	5.2
SPS 1200 SOHO+ IEC	647CA000010	1200 / 720	4 batt + 2 prot	364 x 139 x 195	10.4
SPS 1600 SOHO+ IEC	647CA000011	1600 / 960	4 batt + 2 prot	364 x 139 x 195	10.7
SPS 2200 SOHO+ IEC	647CA000012	2200 / 1200	4 batt + 2 prot	364 x 139 x 195	11