



BM-R Maintenance bypass 3, 6 or 10 kVA

BM-R: Continuity of supply during maintenance operations.

Salicru's **BM-R** series maintenance bypasses enable the UPS to be completely disconnected without interrupting power supply to the loads. Their use is essential for maintenance and repair work, which, for reasons of safety, requires the elimination of any voltages present in the device. The **BM-R** series is available in currents of 16, 40 and 63 A, covering UPSs in the 0.7 to 10 kVA power range with single-phase input and output.

The 40 and 63 A models allow switching without passing through zero thanks to an auxiliary contact that communicates them with an **SLC TWIN RT2** series UPS and enables them to turn the device on, or not.

Features

- Maintenance bypass in rack/wall format.
- Enables loads to operate during UPS maintenance or replacement.
- Simple operation by means of a switch.
- Manual UPS-mains and mains-UPS switching.
- Easy installation and connection.
- Suitable for single-phase devices from 0.7 to 10 kVA.
- Inputs and outputs through IEC sockets for 16 A model.
- Inputs and outputs through terminals for 40 and 63 A models.
- Possibility of transfer from UPS to bypass.⁽¹⁾
- Switching without passing through zero.⁽¹⁾

(1) For 40 and 63 A models.



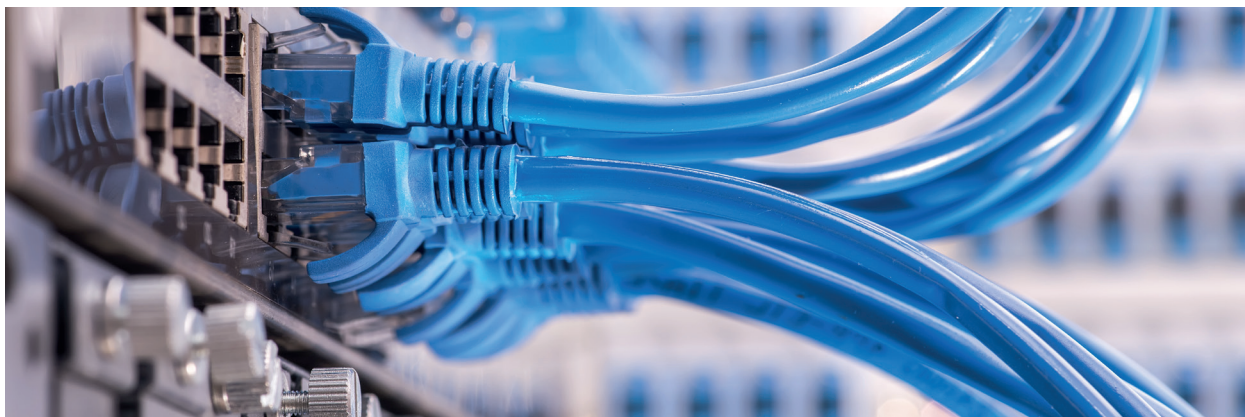
BM-R

TECHNICAL SPECIFICATIONS

MODEL		BM-R 3 kVA	BM-R 6 kVA	BM-R 10 kVA
INPUT / OUTPUT	Rated current	16 A	40 A	63 A
	Rated voltage	208 / 220 / 230 / 240 V		
	Rated frequency	50 / 60 Hz		
CONNECTIONS	Input	1 x IEC20	Terminals	Terminals
	UPS input	1 x IEC19	Terminals	Terminals
	UPS output	1 x IEC20	Terminals	Terminals
	Output	1 x IEC19 + 6 x IEC13	Terminals	Terminals
	Recommended cables	-	6 mm ²	10 mm ²
PHYSICAL	Format	19" rack / wall		
	Depth x Width x Height (mm)	80 x 438 x 50	123 x 438 x 86 (2U)	
	Weight (kg)	1.5	3	3
GENERAL	Operating temperature	0°C ÷ +45°C		
	Relative humidity	Up to 95%, non-condensing		
	Operating altitude	2,400 masl		
STANDARDS	Safety	EN-60950-1		
	Quality and Environmental Management	ISO 9001 and ISO 14001		
CODE		6980P000029	6980P000022	6980P000023

Information subject to change without notice.





SPS ATS Automatic transfer system

SPS ATS: An ideal solution for powering critical loads through two UPSs.

Salicru's **SPS ATS** series is an automatic switch between two single-phase AC power lines which, starting from two sine-wave current power lines, supplies output voltage to the load(s). The switching can be automatic or manual. The LCD display and status LEDs continually report the status of the device, working mode and values of the main measurements.

It has extensive communication possibilities through integrated USB, RS-232 and potential-free contact interfaces, or optional inclusion on an SNMP platform. In addition, by means of the parameter-setting software available, parameters such as delays, overload levels, voltage and frequency ranges, line sensitivity, potential-free contacts, etc., can be set.

Features

- Redundant energy system with two input sources.
- Manual or automatic switching between power lines.
- Extensive programming options for automatic switching.
- LCD display + LEDs for operation and control.
- IEC output connections.
- Easy installation on 19" rack.
- USB, RS-232 and potential-free contact interfaces.
- Parameter-setting and control software (for Windows OS).
- Smart slot for SNMP card.



SPS 16 ATS

TECHNICAL SPECIFICATIONS

MODEL		SPS 16 ATS	SPS 32 ATS
INPUT	Rated voltage	200 / 208 / 220 / 230 / 240 V	
	Operating range	150 ± 300 VAC	
	Rated frequency	50 / 60 Hz	
OUTPUT	Rated voltage	200 / 208 / 220 / 230 / 240 V	
	Current	16 A	32 A
	Overload protection	No	Yes
	Performance	>99%	
CONNECTIONS	Input	2 x IEC C20	Terminals
	Output	8 x IEC C13 + 1x IEC C19	16 x IEC C13 + 2x IEC C19
COMMUNICATIONS	Interface	RS-232, USB and potential-free contacts	
	Slot for SNMP	Yes	
INDICATIONS	Monitoring software	Yes, for Windows OS	
	Through LCD + LEDs	Source A, source B, failure, overload, alarm, audible alarm silencer	
	Displayed values	Voltage, current, frequency, % load, error code	
PHYSICAL	Depth x Width x Height (mm)	275 x 438 x 44 (1U)	275 x 438 x 88 (2U)
	Weight (kg)	4	6
GENERAL	Operating temperature	0°C ÷ +40°C	
	Relative humidity	Up to 95%, non-condensing	
	Operating altitude	2,400 masl	
STANDARDS	Safety	IEC-60950-1	
	Electromagnetic Compatibility (EMC)	EN-55022; EN-55024	
	Quality and Environmental Management	ISO 9001 and ISO 14001	
CODES		658CB000001	658CB000002

Information subject to change without notice.

