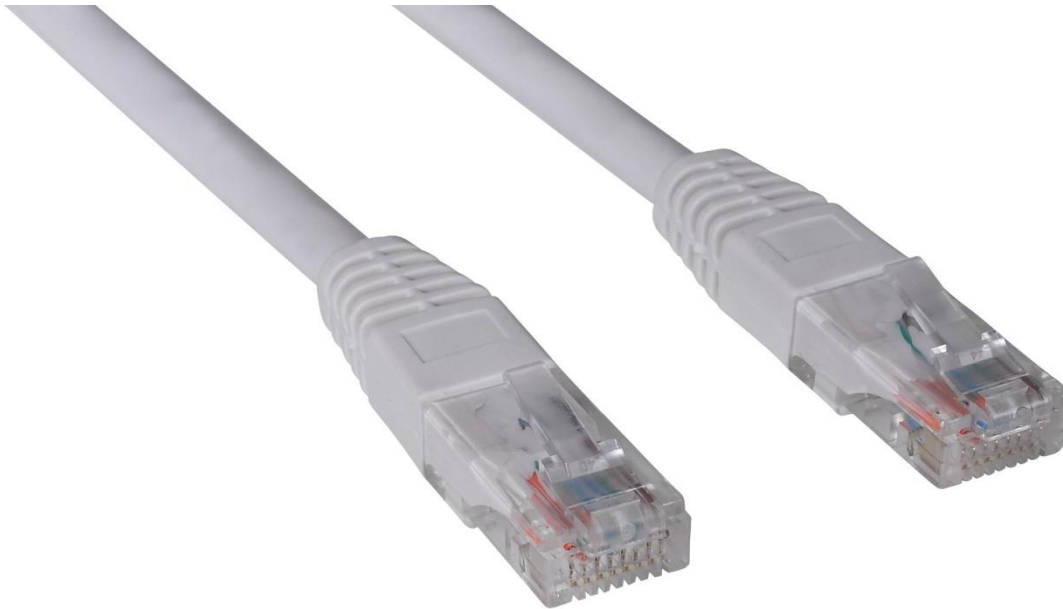


Sandberg Network Cable UTP Cat6 0.5 m



RJ45 UTP patch network cable. Used to connect a computer to a broadband modem/LAN/switch etc. Can also be used between switches and in distributor boxes. The CAT6 standard is an improved version of CAT5e, specially designed to support gigabit Ethernet with an optimal transfer rate and minimal data packet loss. The cable also supports 10 and 100 Mbit/s Ethernet with optimised utilisation of these connection speeds.

More information at www.sandberg.it

Specifications

Description: Sandberg Network Cable UTP Cat6 0.5 m

//Cables/Network cables

EAN 5705730506925

Packaging info

Blank lines for packaging information.

Dimensions

Package height: 8,0 cm

Package width: 6,2 cm

Package depth: 2,3 cm

Package weight: 34 g

Blank lines for dimensions information.

Links

Product page: <http://www.sandberg.it/product/network-cable-utp-cat6-0.5m>

Helpdesk page: <http://www.sandberg.it/support/network-cable-utp-cat6-0.5m>

Download large picture: http://files.sandberg.it/products/images/lg/506-92_lg.jpg

Download PDF: <http://files.sandberg.it/products/pdf/506-92en.pdf>

More information at www.sandberg.it

Dealer

Blank box for dealer information.

