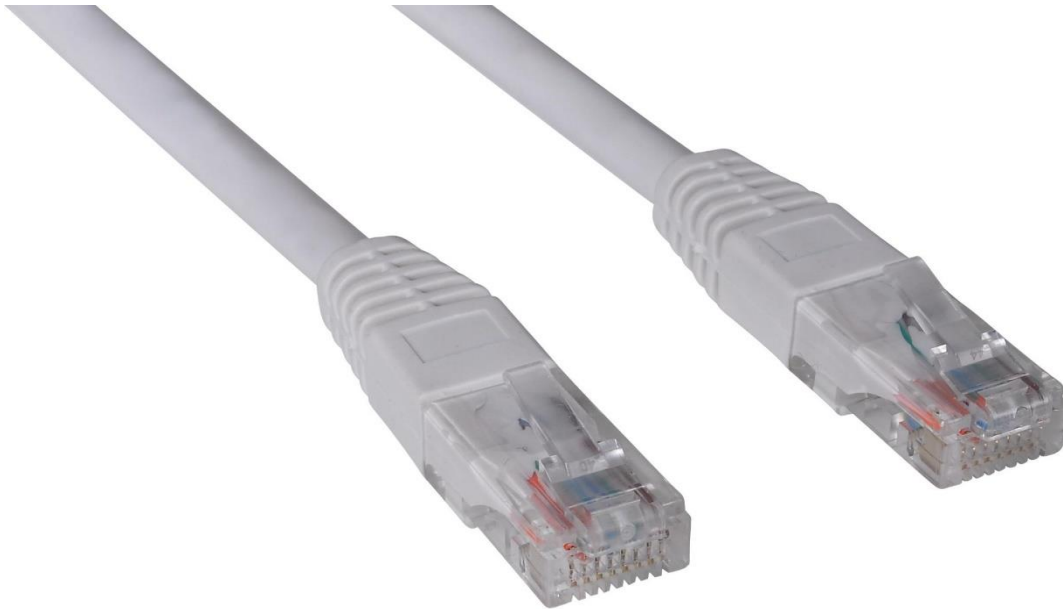


Sandberg Network Cable UTP Cat6 30 m



RJ45 UTP patch network cable. Used to connect a computer to a broadband modem/LAN/switch etc. Can also be used between switches and in distributor boxes. The CAT6 standard is an improved version of CAT5e, specially designed to support 1000 Mbit/s Ethernet with an optimal transfer rate and minimal data packet loss. The cable also supports 10 and 100 Mbit/s Ethernet, which enables the speed to be optimised.

More information at www.sandberg.it

Specifications

Description: Sandberg Network Cable UTP Cat6 30 m

//Cables/Network cables

EAN 5705730507007

Packaging info

Blank lines for packaging information.

Dimensions

Package height: 22,7 cm

Package width: 15,5 cm

Package depth: 10,0 cm

Package weight: 1222 g

Blank lines for dimensions information.

Links

Product page: <http://www.sandberg.it/product/network-cable-utp-cat6-30m>

Helpdesk page: <http://www.sandberg.it/support/network-cable-utp-cat6-30m>

Download large picture: http://files.sandberg.it/products/images/lg/507-00_lg.jpg

Download PDF: <http://files.sandberg.it/products/pdf/507-00en.pdf>

More information at www.sandberg.it

Dealer

Blank box for dealer information.

