

**Shuttle Accessory PCM31:
Triple COM port expansion for Shuttle
Slim-PC Barebone XH310**

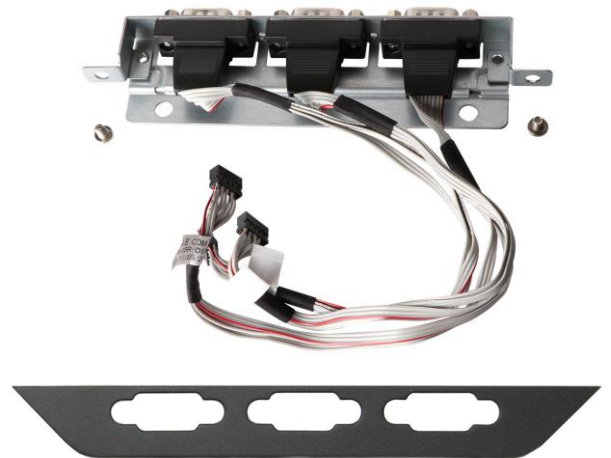
The Shuttle Accessory PCM31 provides three additional COM ports to the front panel of the Shuttle Slim-PC Barebone XH310. However, using PCM3 means that no optical drive can be used.

Feature Highlights

<p><i>Scope of delivery</i></p>	<ul style="list-style-type: none"> • Triple COM port adapter board (1x) • Appropriate front panel cover (1x) • Screws (2x) • Quick Installation Guide
<p><i>Compatibility</i></p>	<ul style="list-style-type: none"> • Compatible with the Shuttle Slim-PC Barebone XH310 (not with XH310V).
<p><i>Notes</i></p>	<ul style="list-style-type: none"> • Because the upper bay of the Shuttle Slim-PC Barebone XH310 is occupied by the Shuttle Accessory PCM31, an optical drive can no longer be used.

Images for illustration only.

**Shuttle Accessory
PCM31**



Shuttle Slim-PC Barebone XH310 with built-in Accessory PCM31

© 2018 by Shuttle Computer Handels GmbH (Germany). All information subject to change without notice. Pictures for illustration purposes only.



Shuttle Accessory PCM31 – Installation Guide

Contents

- Triple COM port adapter (1x)
- Screws (2x)
- COM Port Front Panel (1x)

With the accessory PCM31 the Shuttle XPC can be expanded by three additional RS232 COM ports. It is compatible to Shuttle XPC slim XH310 (not XH310V) and future models.

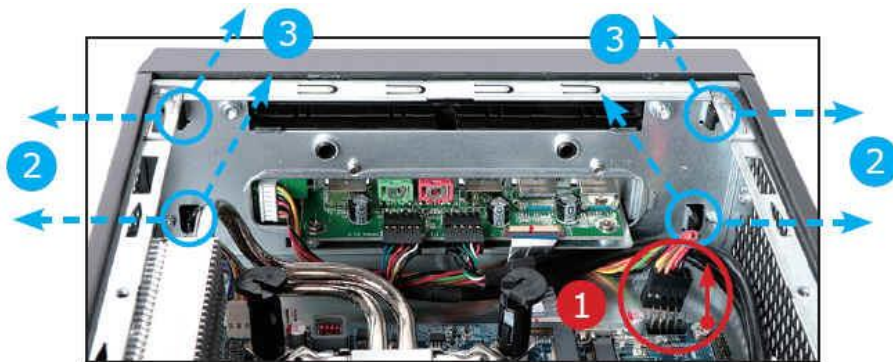
Please follow below steps to install the PCM31 accessory.

Due to safety reasons, please turn off your computer completely first and unplug it from the adapter.

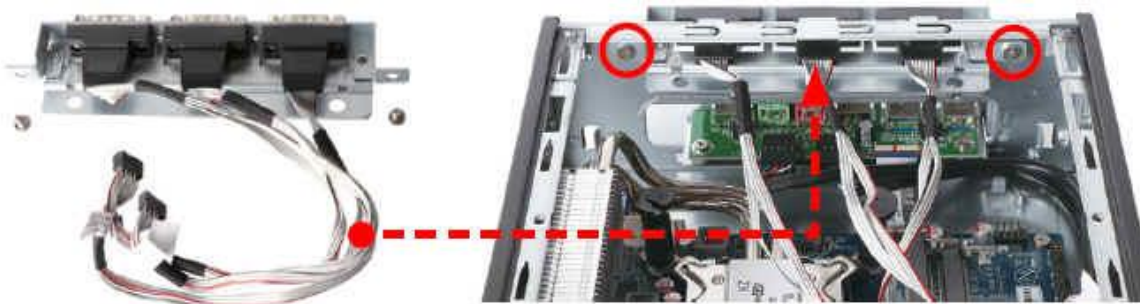
Please note that no optical drive can be installed, if the PCM31 is used.

1. Unscrew the two thumbscrews of the chassis cover. Slide the cover backward and upward.
2. Unplug the SATA and power cables from the HDD/ ODD and remove the racks plus the CPU thermal module.
Note: Disassembly depending on barebone model. Please refer to the relevant Quick Installation Guide when disassembling the HDD/ODD or CPU cooling.

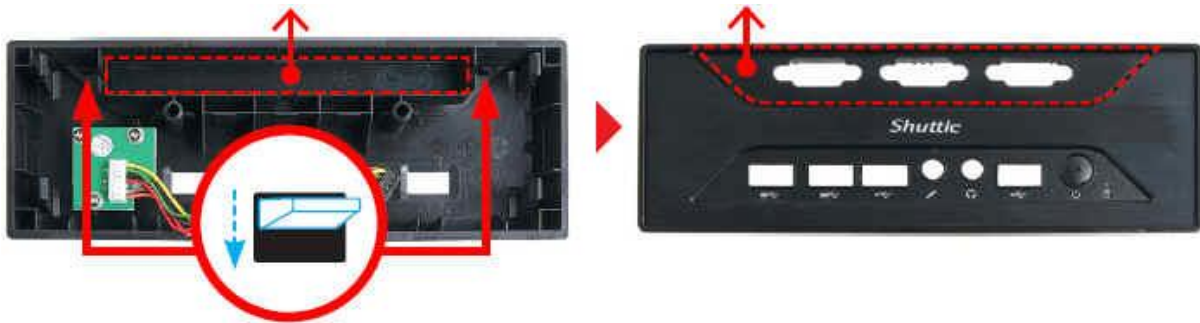
3. Unplug the power board cable from the motherboard. Push the four clips outward, then push forward gently to unlock the front panel for removal.



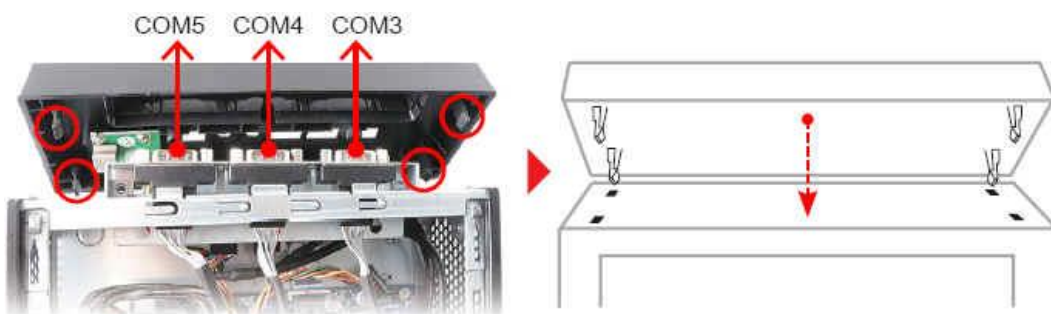
4. Tighten the "COM port adapter" with two screws as shown.



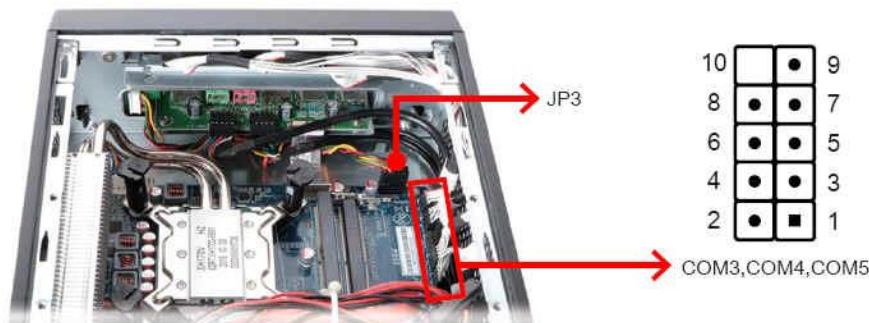
5. To remove the ODD front panel, push the two clips downward, then push forward to unlock. Now install the COM Port front panel.



6. Install the COM Port front panel and check that it is properly aligned.



7. Connect the power board cable to "JP3". Connect the three cables of the PCM31 COM port adapter to the pin headers COM3, COM4 and COM5 on the mainboard.



8. Install the CPU thermal module and HDD along with the bracket in the enclosure. Connect the CPU thermal module/HDD power and SATA cables.



9. To complete installation, replace the cover and fasten its two screws on the rear.