

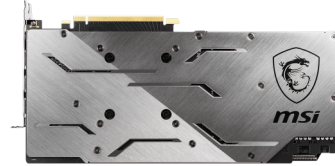


# msi

GRAPHICS CARD



## GeForce RTX 2070 GAMING X 8G



### SPECIFICATIONS

<b>Model Name</b>	GeForce RTX™ 2070 GAMING X 8G
<b>Graphics Processing Unit</b>	NVIDIA® GeForce RTX™ 2070
<b>Interface</b>	PCI Express x16 3.0
<b>Cores</b>	2304 Units
<b>Core Clocks</b>	Boost: 1710 MHz Bast: 1410 MHz
<b>Memory Speed</b>	14 Gbps
<b>Memory</b>	8GB GDDR6
<b>Memory Bus</b>	256-bit
<b>Output</b>	DisplayPort x 3 (v1.4) / HDMI 2.0b x 1 / USB Type-C x 1
<b>HDCP Support</b>	2.2
<b>Power consumption</b>	225 W
<b>Power connectors</b>	8-pin x 1, 6-pin x 1
<b>Recommended PSU</b>	550 W
<b>Card Dimension(mm)</b>	307 x 155 x 50 mm
<b>Weight (Card / Package)</b>	1485 g / 2033 g
<b>Afterburner OC</b>	Y
<b>DirectX Version Support</b>	12 API
<b>OpenGL Version Support</b>	4.5
<b>Maximum Displays</b>	4
<b>VR Ready</b>	Y
<b>G-SYNC™ technology</b>	Y
<b>Adaptive Vertical Sync</b>	Y
<b>Digital Maximum Resolution</b>	7680 x 4320
<b>Accessories</b>	Graphics Card Support Bracket x 1

### CONNECTIONS



1. DisplayPort
2. HDMI
3. USB Type-C

### FEATURES



#### TORX FAN 3.0

Award-winning fan design combining two different fin designs for cool & quiet gaming.



#### DOUBLE BALL BEARINGS

Strong and lasting core for the TORX Fan 3.0 to provide years of smooth and silent gaming.



#### Mastery of Aerodynamics

Using groundbreaking aerodynamic techniques, the heatsink is optimized for efficient heat dissipation.



#### ZERO FROZR

Eliminates fan noise by stopping the fans in low-load situations so you can focus on your game.



#### CUSTOM PCB

An optimized PCB design with enhanced power delivery provides a solid base for high performance gaming.



#### SOLID BACKPLATE

Increases toughness of the card to prevent bending while complementing the design.



#### RGB Mystic Light

Customize colors and LED effects with exclusive MSI software and synchronize the look & feel with other components.



#### MSI Afterburner

The ultimate overclocking software with advanced control options and real-time hardware monitor.