

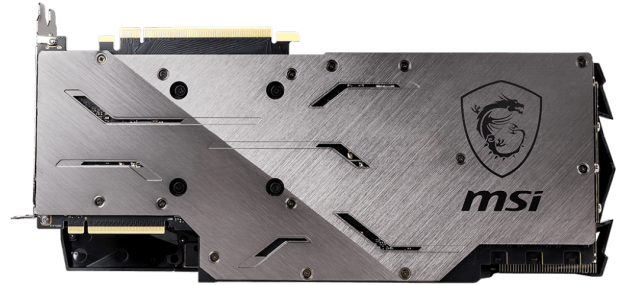


msi

GRAPHICS CARD



GeForce RTX 2080 Ti GAMING TRIO



SPECIFICATION

Model Name	GeForce RTX™ 2080 Ti GAMING TRIO
Graphics Processing Unit	NVIDIA® GeForce RTX™ 2080 Ti
Interface	PCI Express x16 3.0
Cores	4352 Units
Core Clocks	Boost: 1635 MHz
Memory Speed	14 Gbps
Memory	11GB GDDR6
Memory Bus	352-bit
Output	DisplayPort x 3 (v1.4) / HDMI 2.0b x 1 / USB Type-C x1
HDCP Support	2.2
Power consumption	300W
Power connectors	8-pin x 2, 6-pin x 1
Recommended PSU	650W
Card Dimension(mm)	327 x 140 x 55.6 mm
Weight (Card / Package)	1582 g / 2450 g
Afterburner OC	Y
DirectX Version Support	12 API
OpenGL Version Support	4.5
Multi-GPU Technology	NVIDIA® NVLINK™ (SLI-Ready), 2-way
Maximum Displays	4
VR Ready	Y
G-SYNC™ technology	Y

FEATURE

TORX FAN 3.0

Award-winning fan design combining two different fin designs for cool & quiet gaming.

TRI-FROZR THERMAL DESIGN

Using three of the award-winning TORX Fans 3.0 with Double Ball Bearings, Tri-Frozr is the pinnacle of air cooling.

RGB Mystic Light

Customize colors and LED effects with exclusive MSI software and synchronize the look & feel with other components.

DOUBLE BALL BEARINGS

Strong and lasting core for the TORX Fan 3.0 to provide years of smooth and silent gaming.

ZERO FROZR

Eliminates fan noise by stopping the fans in low-load situations so you can focus on your game.

GeForce RTX 2080 Ti GAMING TRIO

Adaptive Vertical Sync	Y
Digital Maximum Resolution	7680 x 4320
Accessories	6-pin to 8-pin power cable x 1, Graphics Card Support Bracket x 1

Mastery of Aerodynamics

Using groundbreaking aerodynamic techniques, the heatsink is optimized for efficient heat dissipation.

OC PERFORMANCE

MSI OC graphics cards are equipped with higher clock speeds out of the box for increased performance.

MSI Afterburner

The ultimate overclocking software with advanced control options and real-time hardware monitor.

CONNECTIONS



1. DisplayPort
2. HDMI
3. USB Type-C