

ideapad 330

STREAMLINE YOUR DAY

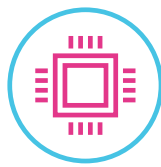
Sometimes it's best to keep things simple. Stacked with premium processing and advanced graphics options, the Lenovo™ IdeaPad™ 330 is as powerful as it is easy to use. Available in a range of sophisticated colors, it's safe, durable, and ready for today's tasks – and tomorrow's.

WHY YOU SHOULD BUY THE LENOVO IDEAPAD 330



Designed to keep up with you

A laptop isn't just a piece of electronics – it's also an investment. That's why we designed the IdeaPad 330 with a special protective finish to guard against wear and tear, as well as rubber detailing on the bottom to maximize ventilation and extend component life.



Amp up your productivity

Choose from a range of specs that will meet your evolving needs. With the latest generation of Intel® processing and advanced NVIDIA® discrete graphics options*, you'll enjoy seamless multitasking, immersive gaming, faster bootups, and more.



Lenovo™



High-performance storage

Choose from up to 2 TB SATA HDD to store thousands of videos, photos and files; or choose responsive SSD, SATA or PCIe* – for shorter boot up times and faster data transfer speeds; or opt for hybrid storage* that gives you the best of both worlds.



Life-like clarity

Featuring up to FHD resolution on a 14", 15.6" or 17.3" display combined with the warm sound of Dolby Audio™, the IdeaPad 330 delivers a powerful entertainment experience on-the-go. (Also available with HD touchscreen.)



* Availability varies by configuration.



WWW.LENOVO.COM



ideapad 330

SPECIFICATIONS

Lenovo IdeaPad 330-14IKB*, Lenovo IdeaPad 330-14IKBR*, Lenovo IdeaPad 330-14IGM*

PERFORMANCE

Processor

8th Generation Intel® Core™ i7 Processor
7th Generation Intel® Core™ i7 Processor
Intel® Pentium® Processor
Intel® Celeron® Processor

Operating System

Windows 10 Home

Graphics

330-14IKB
Intel® Integrated
NVIDIA® GeForce® MX110
NVIDIA® GeForce® MX130
AMD Radeon™ 530

330-14KBR

Intel® Integrated
AMD Radeon™ 530

330-14IGM

Intel® Integrated

Camera / Microphone

0.3M with Single Microphone;
HD with Single Microphone

Audio

2 x 1.5W Speakers with Dolby Audio™

Memory

330-14IKB

4 GB DDR4;
4 GB DDR4 + 2 GB DIMM;
4 GB DDR4 + 4 GB DIMM;
4 GB DDR4 + 8 GB DIMM;
16 GB DIMM;
16 GB Intel® Optane™

330-14IKBR

4 GB DDR4;
4 GB DDR4 + 4 GB DIMM;
4 GB DDR4 + 8 GB DIMM

330-14IGM

4 GB DDR4;
8 GB DDR4

Storage

330-14IKB

SATA SSD : 256 GB / 128 GB
SATA HDD : 2 TB / 1 TB / 500 GB
SATA SSD + SATA HDD : 256 GB + 1 TB /
128 GB + 1 TB

330-14IKBR

SATA SSD : 128 GB
SATA HDD : 2 TB / 1 TB / 500 GB
SATA SSD + SATA HDD : 128 GB + 1 TB

330-14IGM

SATA SSD : 256 GB / 128 GB
SATA HDD : 2 TB / 1 TB / 500 GB

Battery²

Up to 6 Hours

DESIGN

Display

14" FHD (1920 x 1080) Anti-Glare
14" HD (1366 x 768) Anti-Glare

Dimensions (W x D x H)

(mm) : 338.3 x 249.9 x 22.7
(inches): 13.32" x 9.84" x 0.89"

Weight

Starting at 4.6 lbs (2.1 kg)

Additional Features

Cortana
DVD Drive¹

Color Options

Platinum Grey
Mint Green
Midnight Blue
Onyx Black



CONNECTIVITY

WLAN

1 x 1 WiFi 802.11 ac³

Bluetooth®

Bluetooth® 4.1

Connectors

330-14IKB, 330-14IKBR

1 x USB 3.0 Type-C™
2 x USB 3.0
4-in-1 Card Reader (SD, SDHC, SDXC, MMC)
HDMI™
RJ45 LAN
Audio Jack

330-14IGM

1 x USB 3.0
1 x USB 2.0
HDMI™
RJ45 LAN
4-in-1 Card Reader (SD, SDHC, SDXC, MMC)
Audio Jack

PRELOADED SOFTWARE

- Lenovo App Explorer
- Lenovo Vantage
- Lenovo ID
- Lenovo Settings
- McAfee LiveSafe™ (30-day trial)
- Microsoft Office 365 (30-day trial)

¹ Optional.

² All battery life claims are approximate and based on test results using the MobileMark® 2014 ver 1.5 battery life benchmark test. Actual results will vary, and depend on numerous factors including product configuration and usage, software, operating conditions, wireless functionality, power management settings, screen brightness and other factors. The maximum capacity of the battery will naturally decrease with time and usage. See <https://bapccom/products/mobilemark-2014/> for additional details.

³ Disable ac for Russia, Ukraine, Indonesia and Egypt.



Lenovo™

ideapad 330

SPECIFICATIONS

Lenovo IdeaPad 330-15IKB*, Lenovo IdeaPad 330-15IKB-Touch*, Lenovo IdeaPad 330-15IGM*,
Lenovo IdeaPad 330-15ICH*, Lenovo IdeaPad 330-15ICN*

PERFORMANCE

Processor

8th Generation Intel® Core™ i7 Processor
7th Generation Intel® Core™ i7 Processor
Intel® Pentium® Processor
Intel® Celeron® Processor

Operating System

Windows 10 Home or Windows 10 Pro

Graphics

330-15IKB

Intel® Integrated
NVIDIA® GeForce® MX110¹
NVIDIA® GeForce® MX130¹
NVIDIA® GeForce® MX150²
AMD Radeon™ 530²

330-15IKB-Touch

NVIDIA® GeForce® MX130¹
NVIDIA® GeForce® MX150²

330-15IGM

Intel® Integrated
AMD Radeon™ 530

330-15ICH

NVIDIA® GeForce® GTX 1050

330-15ICN

AMD Radeon™ 540

Camera / Microphone

0.3M with Single Microphone;
HD with Single or Array Microphone

Audio

2 x 1.5W Speakers with Dolby Audio™

Memory

330-15IKB, 330-15IKB-Touch

4 GB DDR4;
4 GB DDR4 + 2 GB DIMM;
4 GB DDR4 + 4 GB DIMM;
4 GB DDR4 + 8 GB DIMM;
16 GB DIMM³;
16 GB Intel® Optane™⁴

330-15IGM

4 GB DDR4;
8 GB DDR4

330-15ICH

4 GB DDR4;
4 GB DDR4 + 4 GB DIMM;
4 GB DDR4 + 8 GB DIMM;
16 GB DIMM

330-15ICN

4 GB DDR4;
4 GB DDR4 + 4 GB DIMM;
4 GB DDR4 + 8 GB DIMM

Storage

330-15IKB, 330-15IKB-Touch

PCIe SSD : 128 GB
SATA SSD : 256 GB / 128 GB
SATA HDD : 2 TB / 1 TB / 500 GB
SATA SSD + SATA HDD : 256 GB + 1 TB /
128 GB + 1 TB
PCIe SSD + SATA HDD : 128 GB + 1 TB
16 GB Intel® Optane™ + 1 TB SATA HDD

330-15IGM, 330-15ICN

SATA SSD : 256 GB / 128 GB
SATA HDD : 2 TB / 1 TB / 500 GB

330-15ICH

PCIe SSD : 256 GB / 128 GB
SATA HDD : 2 TB / 1 TB / 500 GB
PCIe SSD + SATA HDD : 256 GB + 1 TB /
128 GB + 1 TB

16 GB Intel® Optane™ + 1 TB SATA HDD

Battery⁵

330-15IKB, 330-15IKB-Touch, 330-15IGM

Up to 6 Hours

330-15ICH

Up to 8 Hours

330-15ICN

Up to 4.5 Hours

DESIGN

Display

330-15IKB, 330-15IGM, 330-15ICH, 330-15ICN

15.6" FHD (1920 x 1080) Anti-Glare

15.6" HD (1366 x 768) Anti-Glare

330-15IKB-Touch

15.6" FHD (1920 x 1080) Touchscreen; Anti-Glare

15.6" HD (1366 x 768) Touchscreen; Anti-Glare

Dimensions (W x D x H)

(mm) : 378 x 260 x 22.9

(inches): 14.88" x 10.24" x 0.9"

Weight

Starting at 4.8 lbs (2.2 kg)

Additional Features

Backlit Keyboard⁶

Cortana

DVD Drive⁷

Color Options

Blizzard White

Platinum Grey

Onyx Black

Midnight Blue

Chocolate

CONNECTIVITY

WLAN

1 x 1 WiFi 802.11 ac⁸
2 x 2 WiFi 802.11 ac⁹

Bluetooth®

Bluetooth® 4.1

Connectors

330-15IKB, 330-15IKB-Touch, 330-15ICH, 330-15ICN

1 x USB 3.0 Type-C™

2 x USB 3.0

4-in-1 Card Reader (SD, SDHC, SDXC, MMC)

HDMI™ 1.4a

RJ45 LAN

Audio Jack

330-15IGM

1 x USB 3.0

1 x USB 2.0

HDMI™ 1.4a

RJ45 LAN

4-in-1 Card Reader (SD, SDHC, SDXC, MMC)

Audio Jack

PRELOADED SOFTWARE

- Lenovo App Explorer
- Lenovo Vantage
- Lenovo ID
- Lenovo Settings
- McAfee LiveSafe™ (30-day trial)
- Microsoft Office 365 (30-day trial)

¹ Available on 7th generation models.

² Available on 8th generation models.

³ Available only with i7 configurations.

⁴ Optional.

⁵ All battery life claims are approximate and based on test results using the MobileMark® 2014 ver 1.5 battery life benchmark test. Actual results will vary, and depend on numerous factors including product configuration and usage, software, operating conditions, wireless functionality, power management settings, screen brightness and other factors. The maximum capacity of the battery will naturally decrease with time and usage. See <https://bapcocom/products/mobilemark-2014/> for additional details.

⁶ Optional and only on ICH models.

⁷ Optional and only on ICN models.

⁸ Disable ac for Russia, Ukraine, Indonesia and Egypt.

⁹ Only on ICH configurations.



ideapad 330

SPECIFICATIONS

Lenovo IdeaPad 330-17IKB*, Lenovo IdeaPad 330-17ICH*

PERFORMANCE

Processor

8th Generation Intel® Core™ i7 Processor
7th Generation Intel® Core™ i7 Processor

Operating System

Windows 10 Home or Windows 10 Pro

Graphics

330-17IKB

Intel® Integrated
NVIDIA® GeForce® MX110
NVIDIA® GeForce® MX130
NVIDIA® GeForce® MX150
AMD Radeon™ 530

330-17ICH

NVIDIA® GeForce® MX110
NVIDIA® GeForce® MX130
NVIDIA® GeForce® MX150
NVIDIA® GeForce® GTX 1050

Camera / Microphone

0.3M with Single Microphone;
HD with Single Microphone

Audio

2 x 1.5W Speakers with Dolby Audio™

Memory

330-17IKB

4 GB DDR4;
4 GB DDR4 + 2 GB DIMM;
4 GB DDR4 + 4 GB DIMM;
4 GB DDR4 + 8 GB DIMM;
16 GB DIMM;
16 GB Intel® Optane™

330-17ICH

4 GB DDR4;
4 GB DDR4 + 4 GB DIMM;
4 GB DDR4 + 8 GB DIMM;
16 GB DIMM

Storage

330-17IKB

PCIe SSD : 128 GB
SATA SSD : 256 GB / 128 GB
SATA HDD : 2 TB / 1 TB / 500 GB
SATA SSD + SATA HDD : 256 GB + 1 TB /
128 GB + 1 TB + ODD
PCIe SSD + SATA HDD : 128 GB + 1 TB
16 GB Intel® Optane™ + 1 TB SATA HDD

330-17ICH

PCIe SSD : 256 GB / 128 GB
SATA HDD : 2 TB / 1 TB / 500 GB
PCIe SSD + SATA HDD : 256 GB + 1 TB /
128 GB + 1 TB
16 GB Intel® Optane™ + 1 TB SATA HDD

Battery²

330-17IKB

Up to 6 Hours

330-17ICH

Up to 8 Hours

DESIGN

Display

17.3" FHD (1920 x 1080) IPS Anti-Glare
17.3" HD+ (1600 x 900) Anti-Glare

Dimensions (W x D x H)

(mm) : 418 x 292.6 x 24.9
(inches): 16.46" x 11.52" x 0.98"

Weight

Starting at 6.2 lbs (2.8 kg)

Additional Features

Backlit Keyboard³

Color Options

Platinum Grey
Onyx Black

CONNECTIVITY

WLAN

1 x 1 WiFi 802.11 ac⁴
2 x 2 WiFi 802.11 ac³

Bluetooth®

Bluetooth® 4.1

Connectors

1 x USB 3.0 Type-C™
2 x USB 3.0
4-in-1 Card Reader (SD, SDHC, SDXC, MMC)
HDMI™
RJ45 LAN
Audio Jack

PRELOADED SOFTWARE

- Lenovo App Explorer
- Lenovo Vantage
- Lenovo ID
- Lenovo Settings
- McAfee LiveSafe™ (30-day trial)
- Microsoft Office 365 (30-day trial)

LENOVO SERVICES

Warranty Upgrades - On-site / In-Home Service

Maximizes PC uptime and productivity by providing convenient, fast repair services in your own home.

Accidental Damage Protection

Avoid the hassles of unexpected repair costs. Provides coverage for non-warranted damage incurred under normal operating conditions, such as minor spills, drops or damage to the integrated screen.

Warranty Extensions (1-to-3 Years Total Duration)

This fixed-term, fixed-cost service helps accurately budget for PC expenses, protect your valuable investment and potentially lower the cost of ownership over time.

* Example of Lenovo IdeaPad catalogue naming convention



Intel® platform codes

Apollo Lake: IAP, Broadwell: IBD, Braswell: IBR, Broadwell: IBW, Baytrail: IBY, Cannonlake: ICN, Haswell: IHH, Kabylake: IKB, Skylake H: ISH, Skylake: ISK, Skylake U: ISU, Skylake Y: ISY, Skylake Z: ISZ

OPTIONS & ACCESSORIES



Lenovo 500 Wireless Compact Precision Mouse



F310S USB 3.0 External Backup Hard Drive



Lenovo 15.6" Laptop Casual Backpack B210



WWW.LENOVO.COM

Lenovo reserves the right to alter product offerings and specifications at any time, without notice. Lenovo makes every effort to ensure accuracy of all information but is not liable or responsible for any editorial, photographic or typographic errors. All images are for illustration purposes only. For full Lenovo product, service and warranty specifications visit www.lenovo.com. Lenovo makes no representations or warranties regarding third party products or services. **Trademarks:** The following are trademarks or registered trademarks of Lenovo: Lenovo, the Lenovo logo, ideapad, IdeaCentre, yoga and yoga home. Microsoft, Windows and Vista are registered trademarks of Microsoft Corporation. Ultrabook, Celeron, Celeron Inside, Core Inside, Intel, Intel Logo, Intel Atom, Intel Atom Inside, Intel Core, Intel Inside, Intel Inside Logo, Intel vPro, Itanium, Itanium Inside, Pentium, Pentium Inside, vPro Inside, Xeon, Xeon Phi, and Xeon Inside are trademarks of Intel Corporation in the U.S. and/or other countries. Other company, product and service names may be trademarks or service marks of others. Visit www.lenovo.com/lenovo/us/en/safecomp/ periodically for the latest information on safe and effective computing. ©2018 Lenovo. All rights reserved.



Lenovo™