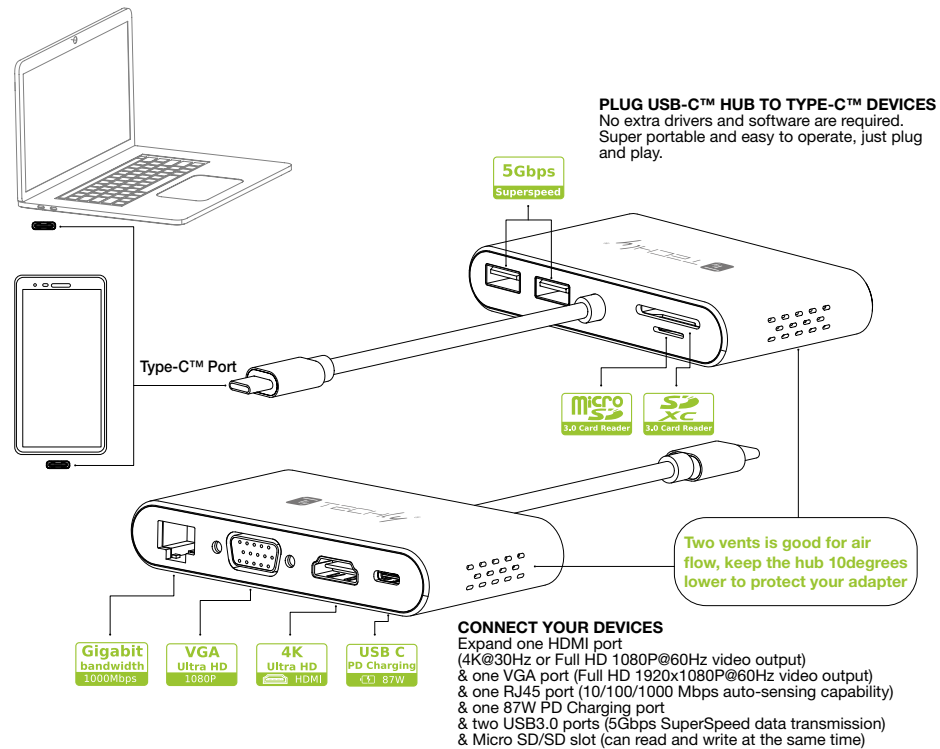
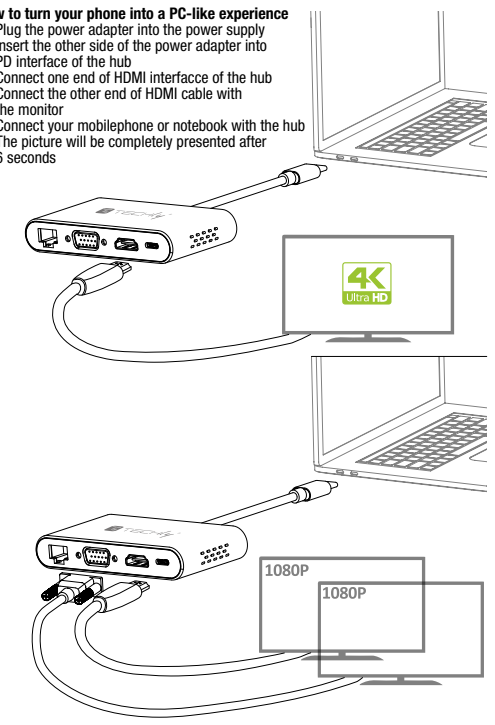


USB-C™ MULTIPOINT ADAPTER



How to turn your phone into a PC-like experience

1. Plug the power adapter into the power supply
2. Insert the other side of the power adapter into PD interface of the hub
3. Connect one end of HDMI interface of the hub
4. Connect the other end of HDMI cable with the monitor
5. Connect your mobilephone or notebook with the hub
6. The picture will be completely presented after 6 seconds



Specification

USB-C™ Multipoint Adapter

- HDMI adapter:**
- Supports 1080P@60Hz, 4K@30Hz
 - Compatible with Samsung Dex and Nintendo Switch
- VGA adapter:**
- Supports VGA 1920x1080P@60Hz (HD) video resolutions
- Card reader:**
- Supports card 1: Micro SD Card
 - Supports card 2: SD Card
 - Can read and write SD and Micro SD at the same time
- USB Hub:**
- 2 ports USB3.0
 - Supports USB3.0 SuperSpeed 5Gbps data transmission
 - The max output of USB3.0 port is 900mA
- PD Charging:**
- 1 port PD charging
 - The max input of PD Charging port is 87W
- Gigabit Ethernet Adapter:**
- Enables you to connect directly to the network
 - Support 10/100/1000Mbps auto-sensing capability

- Supports Plug and Play, Hot Swap
- System supported: Windows Me/2000/XP/Vista/NT/7/8/10/Mac & Linux
- Widely compatible: Driver free with Mac OS, Windows OS, Android powered computer with USB type-C™ port & Thunderbolt 3 including MacBook Pro2016/2017/2018, MacBook Air 2018, iMac/iMac Pro 2017, MacBook 12"2017/2016/2015 & iPad Pro 2018, and other computers with USB Type-C™ port

Input	Single USB-C™
Interface	<ul style="list-style-type: none"> USB-C™ port: PD Charging 87W HDMI: 4K*30Hz or FullHD 1080*60Hz VGA: 1920*1080P@60HZ (HD) RJ45: 10/100/1000Mbps bandwidth 2X USB 3.0 Port: Super Speed 5Gbps Data Transmission Card slot: Read Micro SD/SD Card at the same time
Application	All USB-C™ devices, PC, Tablet, Mobile Phone
Product size	95x55x17,6 mm
Weight	108 g

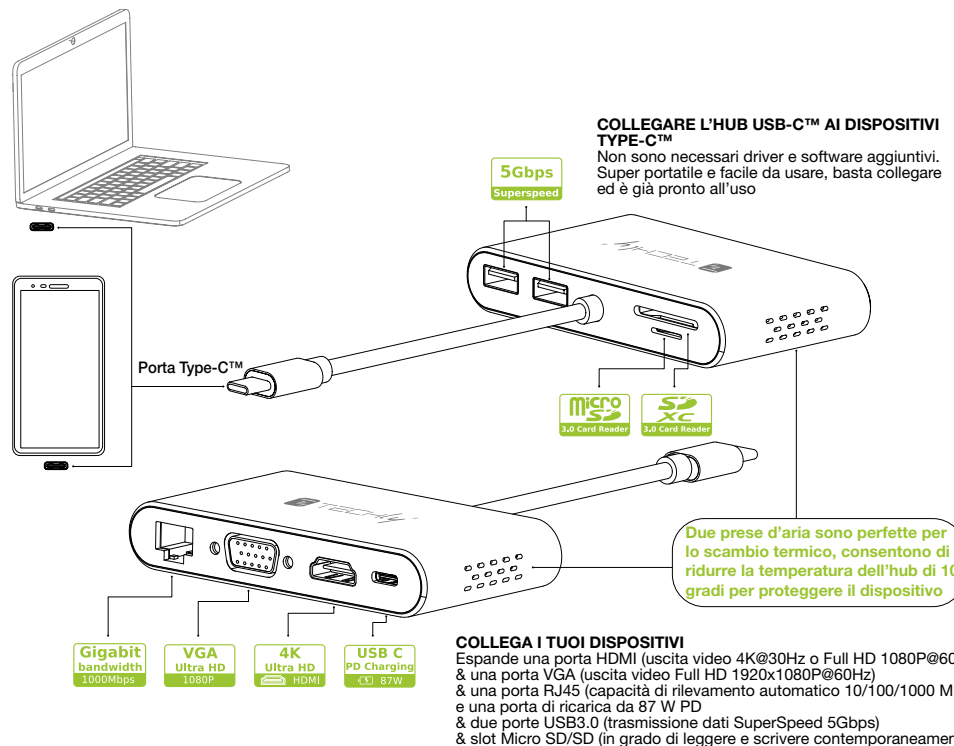
Notebook & Mobile phone list compatible with HDMI

For USB Type-C™ PC	For USB Type-C™ Phones
Apple: MacBook13"/15", MacBook 2015, 2016, 2017, 2018, MacBook Pro, MacBook Air 2018, iPad Pro	Samsung: Galaxy S8, S8+, S9, S9+, Note8
Huawei: MateBook, Matebook X, Matebook X Pro, MateBook E	Huawei: Mate10, Mate10Pro, Mate Rs, P20, P20 Pro
Xiaomi: Air 12.5/13.3" Pro 15.6"	Microsoft: Microsoft 950XL, Microsoft 950
HP: Pavillon X2, Spectre 13, EliteBook Folio G1 Envy 13	HTC: Ultra HTC10
Asus: ZenBook 3, U306, U321 series, U4100, ROG Series	LG: LG FGF700(G5), LG V300L
DELL: XPS13, XPS15	Smartisan: R1
Lenovo: New Air 12", Yoga5 Pro, Yoga 900 13", ThinkPad X1 Carbon 2017	
Samsung Galaxy: Notebook series, GalaxyBook series	for Nintendo Switch
Google: ChromeBook Pixels, PixelBook Pen	
Razer: Razer Blade and Razer Blade Stealth Family	

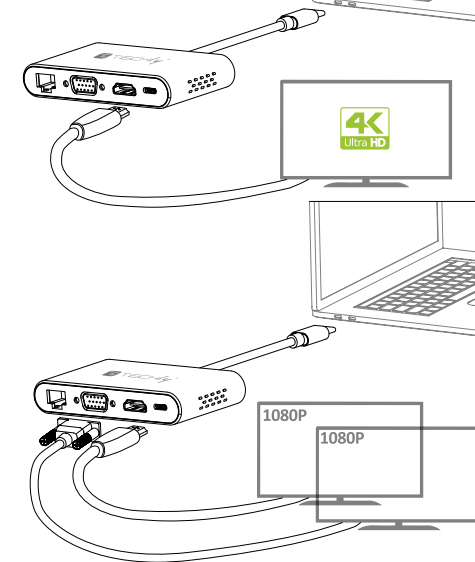


In compliance with EU Directive WEEE this product is marked with this symbol. It means that used electrical and electronic products should not be mixed with general household waste. There is a separate collections system for these products in compliance with WEEE directive, otherwise contaminative and hazardous substances can pollute the environment.

ADATTATORE USB-C™ MULTIORTA



- Come trasformare il tuo telefono in un PC**
1. Collegare l'alimentatore alla presa di corrente
 2. Inserire l'altro lato dell'adattatore di alimentazione nell'interfaccia PD dell'hub
 3. Collegare un'estremità dell'interfaccia HDMI dell'hub
 4. Collegare l'altra estremità del cavo HDMI al monitor
 5. Collega il tuo cellulare o notebook con l'hub
 6. L'immagine sarà visualizzata completamente dopo 6 secondi



Specifiche

Adattatore USB-C™ Multiporta

Adattatore HDMI:

- Supporta 1080P@60Hz, 4K@30Hz
- Compatibile con Samsung Dex e Nintendo Switch

Adattatore VGA:

- Supporta risoluzioni video VGA 1920x1080P@60Hz (HD)

Letture di schede:

- Slot 1 supporta: Scheda Micro SD
- Slot 2 supporta: Scheda SD
- Può leggere e scrivere SD e Micro SD allo stesso tempo

Hub USB:

- 2 porte USB3.0
- Supporta trasmissione dati USB3.0 SuperSpeed 5Gbps
- L'uscita massima della porta USB 3.0 è 900mA

Funzione di ricarica PD:

- 1 porta con funzione di ricarica PD
- L'ingresso massimo della porta di ricarica PD è 87W

Scheda di rete Gigabit:

- Consente di connettersi direttamente alla rete
- Supporta la capacità di auto-sensing 10/100 / 1000Mbps

- Supporta Plug and Play, Hot Swap
- Sistema supportato: Windows Me/2000/XP/Vista/NT/7/8/10/Mac e Linux
- Ampia compatibilità: non richiede driver per i sistemi operativi Mac e Windows, computer Android con porta USB Type-C™ e Thunderbolt 3 incluso MacBook Pro2016 / 2017/2018, MacBook Air 2018, iMac/iMac Pro 2017, MacBook 12" 2017/2016/2015 e iPad Pro 2018 e altri computer con porta USB Type-C™

Ingresso	Singolo USB-C™
	Porta USB-C™: funzione di ricarica 87W
	HDMI: 4K*30Hz o FullHD 1080*60Hz
	VGA: 1920*1080P@60HZ (HD)
	RJ45: 10/100/1000Mbps bandwidth
	2 porte USB3.0: trasmissione dati SuperSpeed 5Gbps
	Slot per schede: legge schede Micro SD/SD contemporaneamente
Applicazione	Tutte le periferiche USB-C™, PC, Tablet, Telefonici cellulari
Dimensioni	95x55x17,6 mm
Peso	108 g

Notebook e elenco di telefoni mobili compatibili con HDMI

Per PC USB Type-C™	Per telefoni USB Type-C™
Apple: MacBook13"/15", MacBook 2015, 2016, 2017, 2018, MacBook Pro, MacBook Air 2018, iPad Pro	Samsung: Galaxy S8, S8+, S9, S9+, Note8
Huawei: MateBook, Matebook X, Matebook X Pro, MateBook E	Huawei: Mate10, Mate10Pro, Mate Rs, P20, P20 Pro
Xiaomi: Air 12.5/13.3" Pro 15.6"	Microsoft: Microsoft 950XL, Microsoft 950
HP: Pavillon X2, Spectre 13, EliteBook Folio G1 Envy 13	HTC: Ultra HTC10
Asus: ZenBook 3, U306, U321 series, U4100, ROG Series	LG: LG FGF700(G5), LG V300L
DELL: XPS13, XPS15	Smartisan: R1
Lenovo: New Air 12", Yoga5 Pro, Yoga 900 13", ThinkPad X1 Carbon 2017	
Samsung Galaxy: Notebook series, GalaxyBook series	per Nintendo Switch
Google: ChromeBook Pixels, PixelBook Pen	
Razer: Razer Blade and Razer Blade Stealth Family	



In conformità alla normativa RAEE, le apparecchiature elettriche ed elettroniche non devono essere smaltite con i rifiuti domestici. Il presente prodotto deve essere consegnato ai punti di raccolta preposti allo smaltimento e riciclo delle apparecchiature elettriche ed elettroniche. Contattate le autorità locali competenti per ottenere informazioni in merito allo smaltimento corretto della presente apparecchiatura.