

Dell Laser Wired Mouse MS3220

User's Guide

Regulatory Model: MS3220p



Notes, Cautions, and Warnings



NOTE: A NOTE indicates important information that helps you make better use of your computer.



CAUTION: A CAUTION indicates potential damage to hardware or loss of data if instructions are not followed.



WARNING: A WARNING indicates a potential for property damage, personal injury, or death.

© 2020 Dell Inc. or its subsidiaries. All rights reserved. Dell, EMC, and other trademarks are trademarks of Dell Inc. or its subsidiaries. Other trademarks may be trademarks of their respective owners.

2020-01

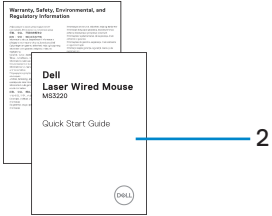
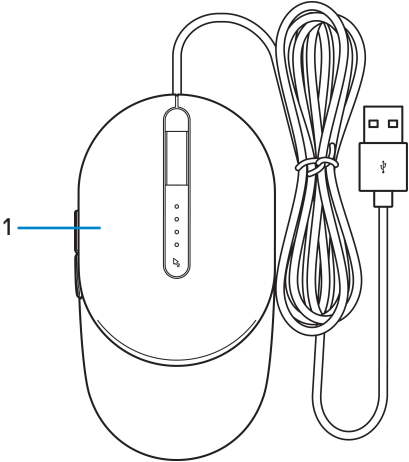
Rev. A00

Contents

Notes, Cautions, and Warnings	2
What's in the box	4
Features	5
Setting up your mouse	6
Connecting the mouse	6
Adjusting the DPI.	6
Specifications.	8
General	8
Electrical	8
Physical characteristics	8
Environmental	8
Troubleshooting	9
Statutory Information	11
Warranty	11
Limited warranty and return policies	11
For U.S. customers:	11
For European, Middle Eastern and African customers:	11
For non-U.S. customers:	11



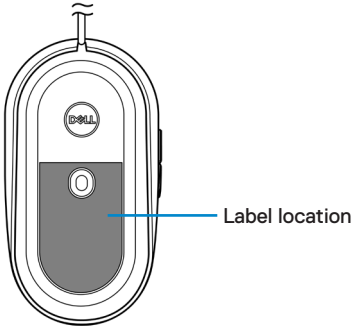
What's in the box



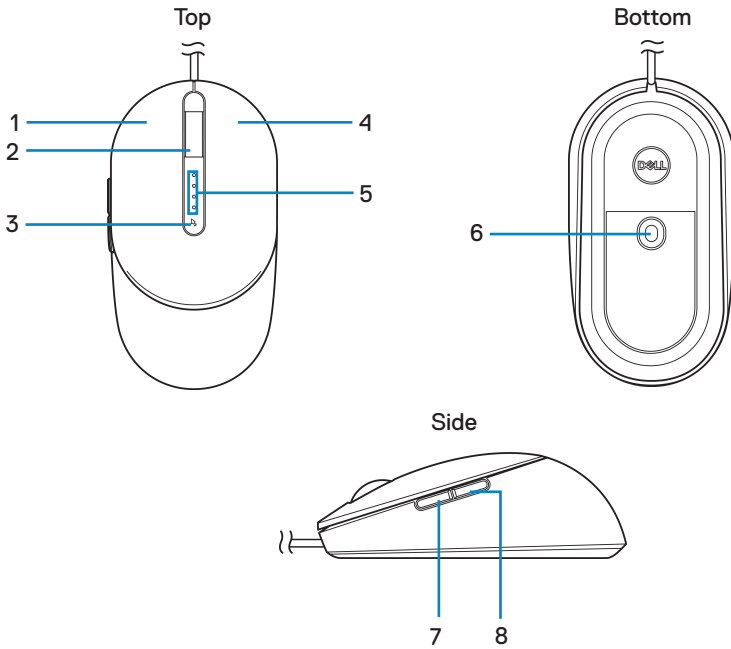
1. Mouse

2. Documents

 **NOTE:** The PPID/Regulatory information label is located on the bottom of the mouse.



Features



1. Left button

2. Scroll wheel

3. DPI adjustment button

4. Right button

5. DPI indicators

6. Laser sensor

7. Forward button

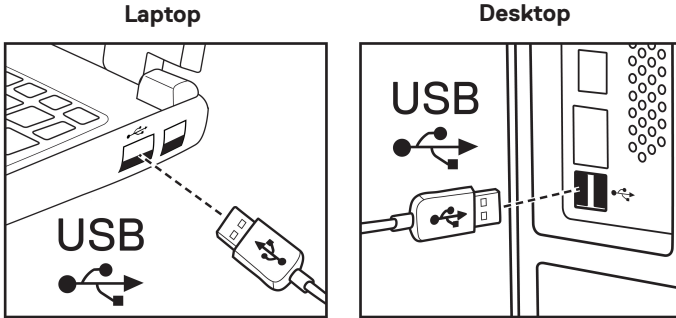
8. Backward button



Setting up your mouse

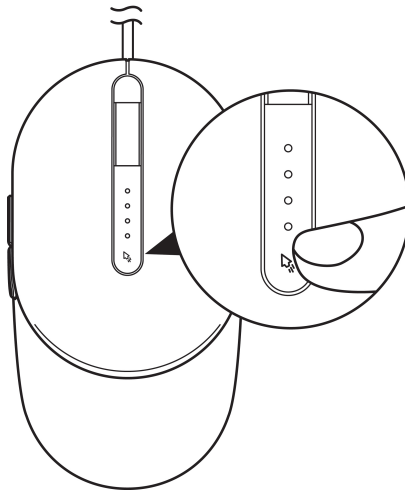
Connecting the mouse

Connect the mouse USB cable to an available USB A port on your laptop or desktop.

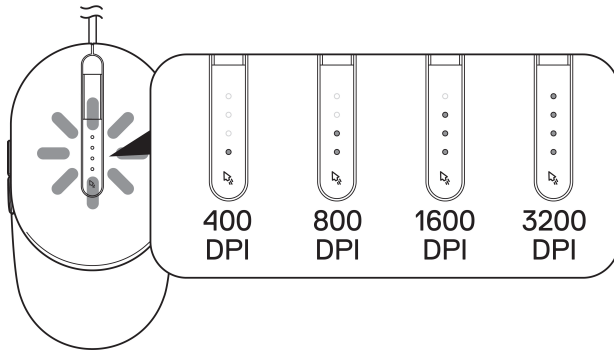


Adjusting the DPI

Press the DPI adjustment button repeatedly to toggle between mouse tracking resolutions.



DPI setting is indicated by the number of DPI indicator lights that are illuminated. The default four DPI settings and their indicator lights are as follows:



Specifications

General

Model number	MS3220
Connection type	Wired USB 2.0
System requirement	<ul style="list-style-type: none">• Windows XP, Vista• Windows: 7, 8, 8.1, 10, and Server 2003 onwards• Linux (Redhat/Ubuntu), Android, Chrome

Electrical

Operating voltage	DC5V, 0.1A
-------------------	------------

Physical characteristics

Weight (with cable)	<120 g (<0.2646 lb)
Dimensions:	
Length	115.3 mm (4.54 in)
Width	63.0 mm (2.48 in)
Height	38.8 mm (1.53 in)

Environmental

Temperature	
Operating	-10°C to 50°C
Storage	-40°C to 65°C
Humidity	
Operating	10 to 90% relative humidity, -50 to 10,000 feet
Storage	10 to 95% relative humidity, -50 to 35,000 feet



Troubleshooting

Problems

Possible solutions

Mouse is not functioning

1. Connect the mouse USB cable to another USB A port. A notification appears indicating that the driver installation is in progress. If so, wait until a notification appears indicating that the drivers are installed before you use the mouse.
2. Restart the computer.

Resolving cursor issues

1. Connect the mouse USB cable to another USB A port. A notification appears indicating that the driver installation is in progress. If so, wait until a notification appears indicating that the drivers are installed before you use the mouse.
2. Ensure that the sensor is not obstructed or dirty.
3. Glass or very smooth glossy surfaces are not suitable for the mouse sensor to capture movement. Using a dark colored fabric mouse pad can improve the tracking.
4. Save any data, close any open program(s), and then restart the laptop/desktop. When you do not have another mouse or touchscreen, you may have to hold the power button down for at least 15 seconds to turn the laptop/desktop off. You may lose any data that is not saved.

Resolving mouse button issues

1. Ensure that there is nothing preventing the mouse buttons from moving. Most mouse buttons make a clicking noise when pressed down.



Problems

Possible solutions

Resolving mouse button issues
(continued)

2. Connect the mouse USB cable to another USB A port. A notification appears indicating that the driver installation is in progress. If so, wait until a notification appears indicating that the drivers are installed before you use the mouse.
3. Save any data, close any open program(s), and then restart the laptop/desktop. When you do not have another mouse or touchscreen, you may have to hold the power button down for at least 15 seconds to turn the laptop/desktop off. You may lose any data that is not saved.

Troubleshooting a slow moving cursor

1. Ensure that the sensor is not obstructed or dirty.
2. Glass or very smooth glossy surfaces are not suitable for the mouse sensor to capture movement. Using a dark colored fabric mouse pad can improve the tracking. use pad can improve the tracking.
3. Change the mouse settings to adjust the pointer speed.

Click on the tab that matches the Operating System (OS) installed on your laptop/desktop and perform the steps within that section to change the settings.
 - In the **Search** box, type `main.cpl`.
 - Click or tap `main.cpl` in the list of programs.
 - Move the slider under **Select a Pointer Speed** to adjust the cursor speed to the desired level.
 - Click or tap **OK**.



Statutory Information

Warranty

Limited warranty and return policies

Dell-branded products carry a three-year limited hardware warranty. If purchased together with Dell system, it will follow the system warranty.

For U.S. customers:

This purchase and your use of this product are subject to Dell's end user agreement, which you can find at [Dell.com/terms](https://www.dell.com/terms). This document contains a binding arbitration clause.

For European, Middle Eastern and African customers:

Dell-branded products that are sold and used are subject to applicable national consumer legal rights, the terms of any retailer sale agreement that you have entered into (which will apply between you and the retailer) and Dell's end user contract terms.

Dell may also provide an additional hardware warranty – full details of the Dell end user contract and warranty terms can be found by going to [Dell.com/terms](https://www.dell.com/terms), selecting your country from the list at the bottom of the “home” page and then clicking the “terms and conditions” link for the end user terms or the “support” link for the warranty terms.

For non-U.S. customers:

Dell-branded products that are sold and used are subject to applicable national consumer legal rights, the terms of any retailer sale agreement that you have entered into (which will apply between you and the retailer) and Dell's warranty terms. Dell may also provide an additional hardware warranty – full details of Dell's warranty terms can be found by going to

[Dell.com](https://www.dell.com), selecting your country from the list at the bottom of the “home” page and then clicking the “terms and conditions” link or the “support” link for the warranty terms.

