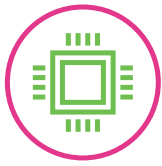


ideapad CREATOR 5

CREATE AMAZING.

Unleash your creativity with Lenovo™ **IdeaPad™** Creator 5, which is fueled by uncompromised power and stunning display clarity and features tailored creator applications. With latest Intel® Core™ processors and NVIDIA® GeForce GTX™ graphics, you can enjoy a hassle-free computing experience. A bundle of applications for creators is packed into Lenovo Vantage as well, offering you the best support for seamless creation.

WHY YOU SHOULD BUY THE LENOVO IDEAPAD CREATOR 5



Productivity powerhouse is here

When it comes to getting work done, nothing can come at the expense of performance. With 10th Generation Intel® Core™ mobile processors, latest NVIDIA® GPUs and Studio Drivers, you could always have superfast performance for everyday work or content creation.



Every detail matters

IdeaPad Creator 5 features 15" IPS FHD display with up to Adobe 100% RGB so you could see the true vivid color. The color calibration technology with Delta E < 2 provides better color accuracy while crafting your masterpiece.



Lenovo™



Crystal-clear sound is all around

The truly rich audio effect is important to the video editing. **IdeaPad** Creator 5 is built in Dolby Audio™ system in dual stereo speaker, the full-range and powerful sound will never let you down.



Tailored made, just for you

Lenovo Vantage is developed with new UI design including all designer's favorite applications in **IdeaPad** Creator 5. The laptop is ISV certified, which means it is compatible with professional software to ensure the applications run smoothly for content creation.



WWW.LENOVO.COM



ideapad CREATOR 5

SPECIFICATIONS

Lenovo IdeaPad Creator 5 (15", 05)*

PERFORMANCE

Processor

Up to 10th Generation Intel® Core™ i7 Processor

Operating System

Windows 10 Home

Graphics

Up to latest NVIDIA® Graphic Card

Memory

4 GB / 8 GB / 16 GB

Storage

M.2 PCIe SSD: 256 GB / 512 GB

HDD : 1 TB

Audio

2 x 1.5W Speakers with Dolby Audio™

Battery¹

Up to 8 Hours with Polymer 45 WHr

DESIGN

Display

Up to 15.6" FHD (1920 x 1080) IPS, Anti-Glare, Adobe RGB 100%

Dimension (W x D x H)

(mm) : 359 x 249.6 x 25

(inches) : 14.13" x 9.83" x 0.98"

Weight

Starting at 4.8 lbs (2.2 kg)

Color

Dark Moss

CONNECTIVITY

WLAN

2x2 WiFi 802.11 ac

Bluetooth®

Bluetooth® 5.0

Input/Output (I/O) Ports

1 x USB 3.1 Gen 1² (Type-C™)

2 x USB 3.1 Gen 1² (Type-A)

1 x HDMI™

1 x RJ45

1 x Microphone/Earphone Combo

1 x Power DC Jack

PRELOADED SOFTWARE

- Lenovo Antivirus Plus³
- Lenovo PC Manager⁴
- Lenovo Utility³
- Lenovo Vantage⁵
- LinkedIn⁴
- McAfee LiveSafe™⁵
- Microsoft Office



¹ All battery life claims are approximate and based on test results using the MobileMark® 2014 ver 1.5 battery life benchmark test. Actual results will vary, and depend on numerous factors including product configuration and usage, software, operating conditions, wireless functionality, power management settings, screen brightness and other factors. The maximum capacity of the battery will naturally decrease with time and usage. See <https://bapco.com/products/mobilemark-2014/> for additional details.

² The actual transfer speed of the USB 3.1 Gen 1 will vary and, depending on many factors, such as the processing capability of host and peripheral devices, file attributes and other factors related to system configuration and your operating environments, will be slower than a speed of 5 Gbit/s.

³ PRC only.

⁴ Worldwide (WW).

⁵ ROW only.

LENOVO SERVICES

Warranty Upgrades - On-site / In-Home Service

Maximizes PC uptime and productivity by providing convenient, fast repair services in your own home.

Accidental Damage Protection

Avoid the hassles of unexpected repair costs. Provides coverage for non-warranted damage incurred under normal operating conditions, such as minor spills, drops or damage to the integrated screen.

Warranty Extensions (1-to-3 Years Total Duration)

This fixed-term, fixed-cost service helps accurately budget for PC expenses, protect your valuable investment and potentially lower the cost of ownership over time.

OPTIONS & ACCESSORIES



Lenovo 400 Wireless Mouse



Lenovo 15.6" Laptop Casual Backpack B210



Lenovo 100 In-Ear Headphone

* Example of Lenovo IdeaPad Creator catalogue naming convention



WWW.LENOVO.COM

Lenovo reserves the right to alter product offerings and specifications at any time, without notice. Lenovo makes every effort to ensure accuracy of all information but is not liable or responsible for any editorial, photographic or typographic errors. All images are for illustration purposes only. For full Lenovo product, service and warranty specifications visit www.lenovo.com. Lenovo makes no representations or warranties regarding third party products or services. **Trademarks:** The following are trademarks or registered trademarks of Lenovo: Lenovo, the Lenovo logo, ideapad, IdeaCentre, yoga and yoga home. Microsoft, Windows and Vista are registered trademarks of Microsoft Corporation. Ultrabook, Celeron, Celeron Inside, Core Inside, Intel, Intel Logo, Intel Atom, Intel Atom Inside, Intel Core, Intel Inside, Intel Inside Logo, Intel vPro, Itanium, Itanium Inside, Pentium, Pentium Inside, vPro Inside, Xeon, Xeon Phi, and Xeon Inside are trademarks of Intel Corporation in the U.S. and/or other countries. Other company, product and service names may be trademarks or service marks of others. Visit www.lenovo.com/lenovo/us/en/safecomp/ periodically for the latest information on safe and effective computing. ©2019 Lenovo. All rights reserved.



Lenovo™