

ThinkPad.

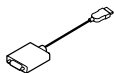
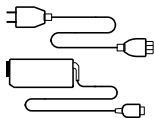
T14 Gen 1 / T15 Gen 1

P14s Gen 1 / P15s Gen 1

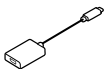
Setup Guide

Lenovo

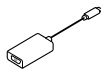
Initial Setup



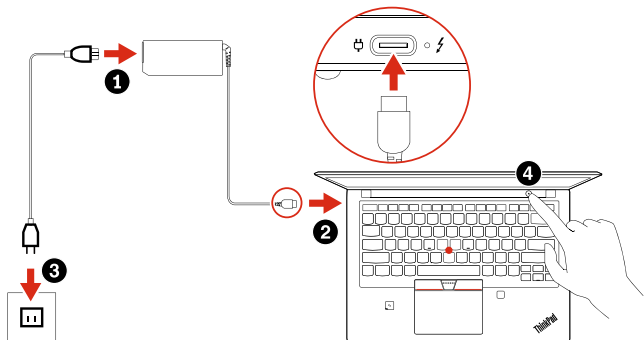
* Lenovo HDMI to
VGA Adapter



* Lenovo USB-C to
DisplayPort Adapter

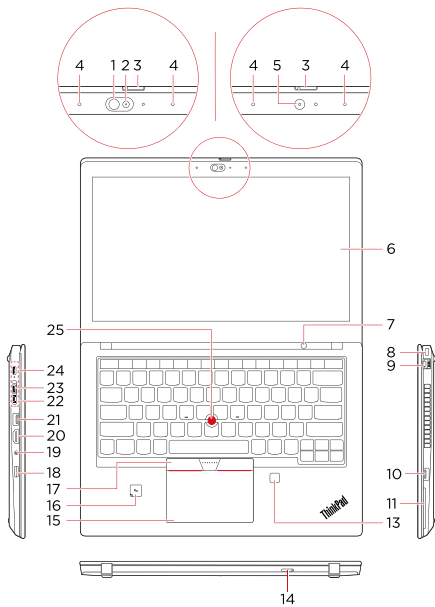


* Lenovo USB-C to
VGA Adapter



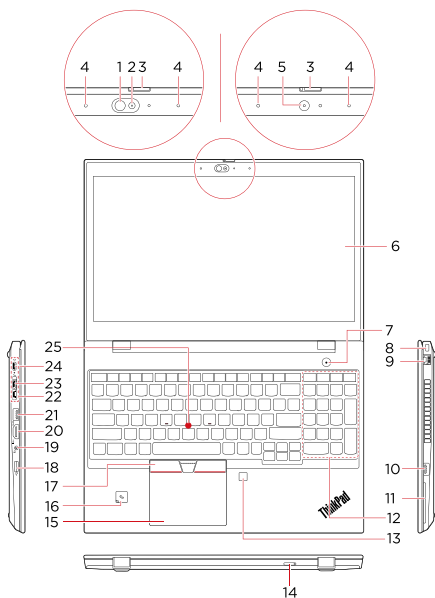
Overview

T14 Gen 1 / P14s Gen 1



Overview

T15 Gen 1 / P15s Gen 1



- * 1. Infrared LED
- * 2. Camera with IR function
- * 3. ThinkShutter
- * 4. Microphones
- * 5. Camera
- * 6. Multi-touch screen
- 7. Power button
- 8. Security-lock slot
- 9. Ethernet connector
- 10. Always On USB 3.2 connector Gen 1
- * 11. Smart-card slot
- 12. Numeric keypad
- * 13. Fingerprint reader
- * 14. Nano-SIM-card tray
- 15. Trackpad
- * 16. NFC label
- 17. TrackPoint® buttons
- 18. microSD card slot
- 19. Audio connector
- 20. HDMI™ connector
- 21. USB 3.2 connector Gen 1
- 22. Docking-station connector
- 23. Thunderbolt™ 3 connector (USB-C)
- 24. USB-C™ (3.2 Gen 1) connector
- 25. TrackPoint pointing stick

 Read the statement on USB transfer rate in the *User Guide*. Refer to the *Safety and Warranty Guide* for accessing the *User Guide*.

Customer Replaceable Units (CRUs)

xxxxxxxxxxxx | xxxxxxxxxxxx | xxxxxxxxxxxx | xxxxxxxxxxxx | xxxxxxxxxxxx

- ac power adapter
- Always On USB 3.2 connector Gen 1 board
- Always On USB 3.2 connector Gen 1 board bracket
- Base cover assembly
- Coin-cell battery
- Keyboard
- * • Memory module
- M.2 solid-state drive
- * • M.2 solid-state drive bracket
- * • Nano-SIM-card tray
- Power cord
- Speaker assembly
- * • Wireless WAN card

Refer to the *User Guide* for CRU definition.

Additional information

XXXXXXXX | XXXXXXXX | XXXXXX | XXXXXXXXXXXX | XXXXXXXXXXXX

European Union – compliance with the Radio Equipment Directive

Hereby, Lenovo (Singapore) Pte. Ltd., declares that the radio equipment type ThinkPad T14 Gen 1, ThinkPad T15 Gen 1, ThinkPad P14s Gen 1, and ThinkPad P15s Gen 1 are in compliance with Directive 2014/53/EU.

The full text of the system EU declaration of conformity is available at the following Internet address:

<https://www.lenovo.com/us/en/compliance/eu-doc>

This radio equipment operates with the following frequency bands and maximum radio-frequency power:

Technology	Frequency band [MHz]	Maximum transmit power
WLAN 802.11b/g/n/ax	2400 - 2483.5	< 20 dBm

Technology	Frequency band [MHz]	Maximum transmit power
WLAN 802.11a/n/ac/ax	5150 - 5725	< 23 dBm
WLAN 802.11a/n/ac/ax	5725 - 5875	< 13.98 dBm
Bluetooth BR/EDR/LE	2400 - 2483.5	< 20 dBm
WWAN UMTS	1/8	< 24.5 dBm
WWAN LTE	1/3/7/8/20/28	< 24 dBm
WWAN LTE	38/40/42	< 24 dBm
NFC	13.56	< -5.31 dBμA/m @10m

Usage of all the radio devices is limited to indoor in the band 5150 MHz to 5350 MHz (channels 36, 40, 44, 48, 52, 56, 60, 64).



First Edition (April 2020)

© Copyright Lenovo 2020.

LIMITED AND RESTRICTED RIGHTS NOTICE: If data or software is delivered pursuant to a General Services Administration "GSA" contract, use, reproduction, or disclosure is subject to restrictions set forth in Contract No. GS-35F-05925.

Reduce | Reuse | Recycle

