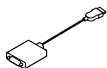
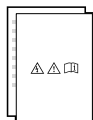
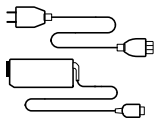


**ThinkPad**<sup>®</sup> P15v Gen 1 / T15p Gen 1

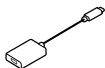
# Setup Guide

**Lenovo**

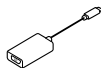
# Initial Setup



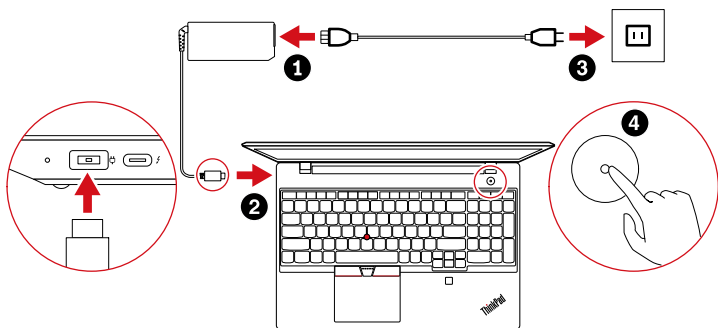
\* Lenovo HDMI to VGA Adapter



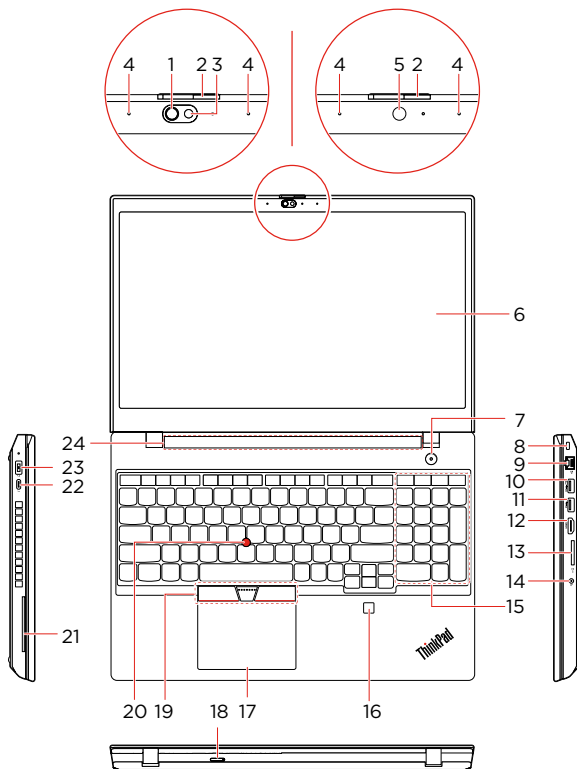
\* Lenovo USB-C to DisplayPort Adapter



\* Lenovo USB-C to VGA Adapter



# Overview



- \* 1. Infrared LED
- \* 2. ThinkShutter
- \* 3. Camera with IR function
- \* 4. Microphones
- \* 5. Camera
- \* 6. Multi-touch screen
- 7. Power button
- 8. Security-lock slot
- 9. Ethernet connector
- 10. Always On USB 3.2 connector Gen 1
- 11. USB 3.2 connector Gen 1
- 12. HDMI™ connector
- 13. SD-card slot
- 14. Audio connector
- 15. Numeric keypad
- 16. Fingerprint reader
- 17. Trackpad
- \* 18. Nano-SIM-card tray
- 19. TrackPoint® buttons
- 20. TrackPoint pointing device
- \* 21. Smart-card slot
- 22. Thunderbolt™ 3 connector (USB-C™)
- 23. Power connector
- 24. Speakers

 Read the statement on USB transfer rate in the *User Guide*. Refer to the *Safety and Warranty Guide* for accessing the *User Gu*

# Customer Replaceable Units (CRUs)

---

- ac power adapter
- Base cover assembly
- Coin-cell battery
- Keyboard
- Memory module
- M.2 solid-state drive
- \* • Nano-SIM-card tray
- Power cord
- \* • Wireless WAN card

Refer to the *User Guide* for CRU definition.

## Additional information

---

### European Union – compliance with the Radio Equipment Directive

Hereby, Lenovo (Singapore) Pte. Ltd., declares that the radio equipment type ThinkPad P15v Gen 1 / ThinkPad T15p Gen 1 is in compliance with Directive 2014/53/EU.

The full text of the system EU declaration of conformity is available at the following Internet address:

<https://www.lenovo.com/us/en/compliance/eu-doc>

This radio equipment operates with the following frequency bands and maximum radio-frequency power:

Technology	Frequency band [MHz]	Maximum transmit power
WLAN 802.11b/g/n/ax	2400 - 2483.5	< 20 dBm
WLAN 802.11a/n/ac/ax	5150 - 5725	< 23 dBm
WLAN 802.11a/n/ac/ax	5725 - 5875	< 13.98 dBm
Bluetooth BR/EDR/LE	2400 - 2483.5	< 20 dBm
WWAN UMTS	1/8	< 24.5 dBm
WWAN LTE	1/3/7/8/20/28	< 24 dBm

Usage of all the radio devices is limited to indoor in the band 5150 MHz to 5350 MHz (channels 36, 40, 44, 48, 52, 56, 60, 64).

---

\* For selected models



---

**First Edition (July 2020)**

**© Copyright Lenovo 2020.**

LIMITED AND RESTRICTED RIGHTS NOTICE: If data or software is delivered pursuant to a General Services Administration "GSA" contract, use, reproduction, or disclosure is subject to restrictions set forth in Contract No. GS-35F-05925.

**Reduce | Reuse | Recycle**

