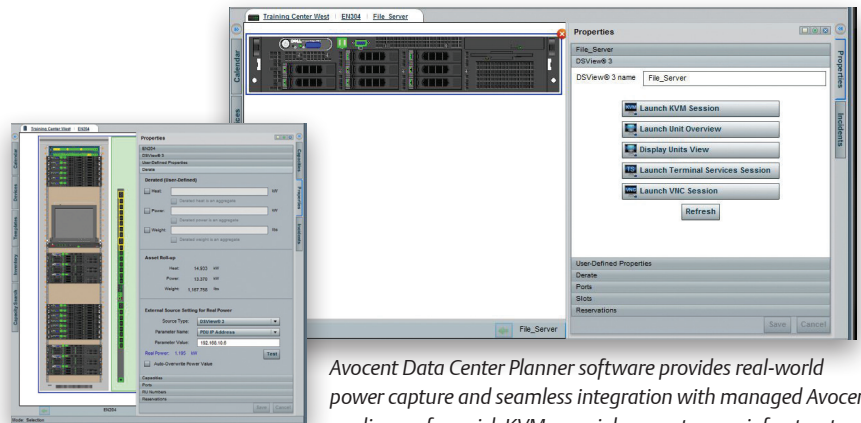


Avocent® Data Center Planner

An Unparalleled Solution for Holistic Infrastructure Management

IT Executives and Management
Use a real-world, single source of truth to gain visibility across global operations; accurately anticipate growth and budget needs; establish consistent metrics; and improve reporting accuracy.



Avocent Data Center Planner software provides real-world power capture and seamless integration with managed Avocent appliances for quick KVM or serial access to your infrastructure.

Solution

Avocent® Data Center Planner software provides a system of record for all of the physical infrastructure equipment, power consumption and device connections in your data center. Combined with Avocent DSView™ management software, which offers a single interface for remote data center control, Avocent Data Center Planner software facilitates secure, in- and out-of-band, centralized management to deliver a real-world view of all connected IT and network devices.

Benefits

Planning and Management

Instantly know the current state of the data center and anticipate the effect of change to efficiently manage routine services; cut the time to provision, install and decommission equipment and reduce downtime.

Rely on up-to-date, comprehensive data about devices and equipment locations, current capacities and power usage to confidently implement installs and changes without compromising availability. You can also anticipate capacity needs and reduce unplanned escalations or outages.

When it comes to managing complex data centers, the pressure continues to mount. The well-being of the entire organization rests on IT's ability to maintain peak availability, flexibility and performance. Unfortunately, standard ad hoc tools and techniques for managing physical infrastructure are piecemeal and isolated, failing to provide accurate, up-to-date information needed to effectively manage today's complex environment.

Avocent® Data Center Planner software offers a holistic solution for infrastructure planning and management, delivering unmatched insight into your data center. This highly visual software provides a reliable system of record with current-state information about where devices and equipment are located, current capacities and projected growth; end-to-end device connection visualization; and real-world power usage information.

When you combine Avocent Data Center Planner with Avocent DSView™ software, your IT organization can proactively manage your physical infrastructure to achieve the levels of performance, agility and efficiency your business demands. Avocent DSView software enables remote control of all connected IT and network devices—both physical and virtual—through a single interface. You can access, monitor, measure and control target devices on multiple platforms at numerous locations—anywhere, anytime—regardless of the health or status of the operating system or network availability.

Together, Avocent Data Center Planner software and Avocent DSView software offer a comprehensive solution to successfully managing physical infrastructure so that you can:

- Cut the time needed to provision and install equipment by modeling changes and understanding their impact before committing resources.
- Reduce outages and mean-time-to-repair with visual tracking that provides quick access to real-time and historical capacity data and real-world data about current power consumption and device connections.
- Lower risk with secure, remote management that allows you to track assets, plan and execute with minimal access to the data center floor.
- Reduce the amount of time required to complete mandatory audits, improve communications and maintain best practices throughout the organization with a single system of record for facilities and IT.

Plus, with the reports and data gathered, you can know exactly where the assets are in the data center based on service tag, host name, manufacturer and other criteria.



Proactively Manage Your Physical Infrastructure to Deliver Exceptional Availability and Efficiency

Inventory Management

Increase efficient use of resources with immediate insight into the data center components.

- Graphics are updated dynamically as equipment is installed, decommissioned or moved so that you can instantly know the physical location, attributes and current capacity of all equipment including space, power and weight of components and their respective dependencies.
- Fine-grained permissions for owners and operators make it easy to securely manage access to plans and racks.
- A rich device symbol library includes all environmental statistics and nameplate power consumption information, dimensions, weight, connection and port information from the manufacturer.
- Powerful search makes it easy to quickly find assets by their characteristics and physical location.

Configuration Management

Plan with accuracy and confidence to improve project prioritization, cut time and costs for change and reduce risk.

- Drag-and-drop tools provide sophisticated modeling and predictive analytics for immediate insight into component requirements.
- Scenario planning capabilities help you understand the impact of changes before they take place.
- The centralized repository lets you manage and standardize globally.
- End-to-end visualization of device connections simplifies planning and execution of changes, expansion of the virtual environment or moves to cloud-based architectures.

Capacity Tracking

Efficiently track capacity to decrease the costs and risks associated with over- or under-provisioning.

- Insight into historical and real-world power usage with up-to-date measurements collected directly from devices provides clarity around consumption trends and improves the accuracy of cost calculations.
- Unique rack timeline capabilities show exactly when and how rack capacity (space, power and cooling) will be impacted by changes over time.
- At-a-glance infrastructure status and predictive modeling simplify the process of rightsizing the infrastructure.

Reporting

Improve strategic operations management while substantially reducing the time required for audits.

- On-demand reporting and centralized access to a single asset repository eliminate labor-intensive audits and manual updates to spreadsheets.
- Detailed activity logs provide a critical audit trail for issue resolution and regulatory compliance.
- Standards-based data exchange with enterprise systems, such as real-time monitoring, asset management, change management and universal configuration management, makes it easy to share information across departments.

Specifications

Server

- Microsoft® Windows® Server 2008 R2 (64 bit) Standard Edition
- Microsoft® Windows® Server 2003 R2 Standard Edition SP2
- Microsoft Windows Server 2008 SP1 (32 bit) Standard Edition
- Red Hat® Enterprise Linux 5.4 (32- and 64-bit)
- Red Hat Linux RPM Packages - libXext, libXtst, libXi, xorg-x11-apps, xorg-x11-xauth
- Hardware – Any server class processor like Intel Xeon processors with four or more cores, 4 GB or more memory, 16 GB hard disk or SSD

NOTE: Specialized versions of Microsoft Windows Server such as SMB Server and Storage Server are not supported.

NOTE: When the Avocent server is on Windows Server 2008 with Internet Explorer Enhanced Security Configuration (IE ESC) enabled, which is the default, port 8443 and 8092 must be open for remote computers to run the application.

Client

- Microsoft Windows 7 Professional
- Microsoft Windows XP Professional with SP3 (32-bit support only)
- Microsoft Windows Vista® Business SP2
- Adobe Flash Player 10 and 11 (Flash Player 10 is not supported on Red Hat Enterprise Linux, but the non-debug version supports both Windows and Linux.)
- Hardware - Dual or more core Intel i7 processor, 4GB or more ram and 100 Mbits/s or faster network.

Supported Browsers

- Firefox® 3
- Microsoft Internet Explorer® 7
- Microsoft Internet Explorer® 8
- Microsoft Internet Explorer® 9
- Google Chrome

Also, for **Supported Databases**, please add to your list the following:

- Microsoft® SQL Server® 2008 R2 (64 bit)
- Microsoft® SQL Server® 2005
- PostgreSQL Version 9.1 (32 bit and 64 bit)
- PostgreSQL Version 8.4.2