



FOR
INFILED
WP-SERIES
DVLED PANELS

BT93INFWP-B-4X4

BOLT DOWN STAND

FOR INFILED WP SERIES
4X4 DVLED VIDEOWALL

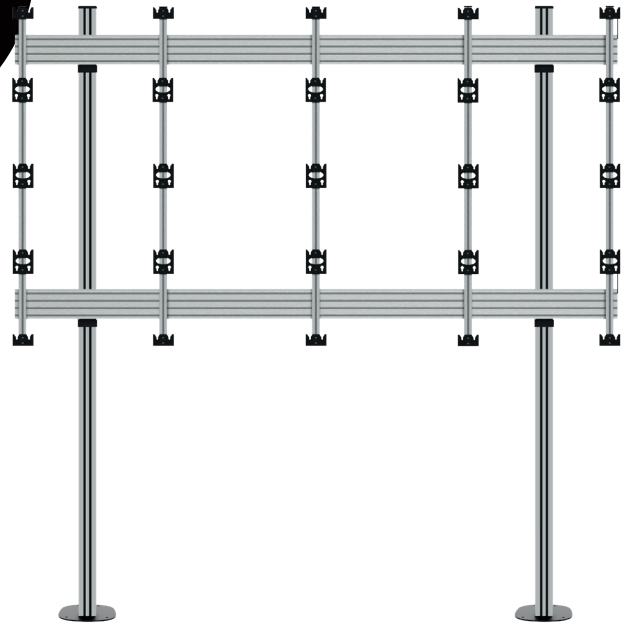
The BT93INFWP-B-4X4 is a bolt down mounting solution designed specifically to mount INFILED WP-Series DVLED panels in a 4x4 videowall configuration. A high-end aesthetic, anodised aluminium finish and integrated cable management ensures a smart and stylish installation which is quick and simple to install.

SPECIFICATION

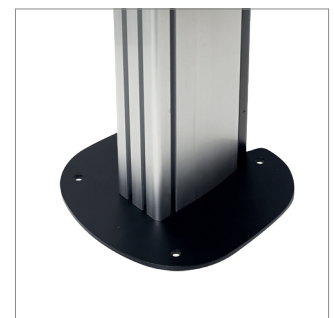
Panel fixing method	Rear mounted
Colour (columns)	Black or Silver
Colour (mounting frame)	Silver
For indoor use only	

FEATURES

- Designed and configured specifically for INFILED WP-Series DVLED panels
- Keyhole mounting plates allow for easy rear fixed mounting
- Open frame allows panel access for servicing and maintenance
- Small footprint for an unobtrusive installation into confined areas
- Integrated cable management for tidy install
- Freestanding, mobile and ceiling mounted versions also available

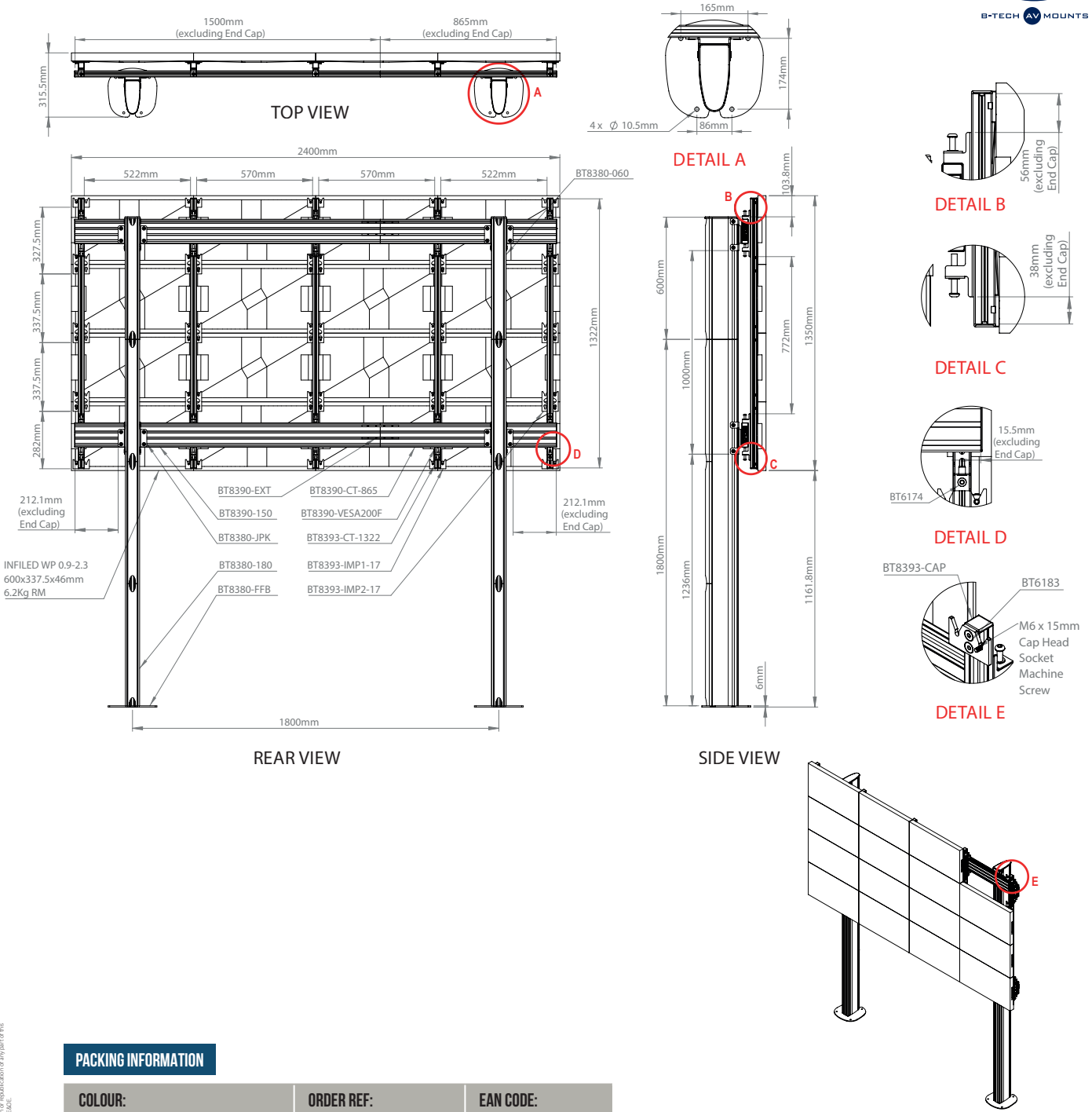


Integrated cable management for a tidy install



Small footprint for an unobtrusive installation into confined areas





PACKING INFORMATION

COLOUR:	ORDER REF:	EAN CODE:
Black Base with Silver Columns	BT93INFWP-B-4X4/BS	5019318303098
Black Base with Black Columns	BT93INFWP-B-4X4/BB	5019318303104

RELATED PRODUCTS

<p>BT93INFWP-B-5X5</p> <p>Bolt Down Stand for INFILED WP Series 5x5 DVLED Videowall</p>	<p>BT93INFWP-S-4X4</p> <p>Floor Stand for INFILED WP Series 4x4 DVLED Videowall</p>	<p>BT93INFWP-M-4X4</p> <p>Mobile Trolley for INFILED WP Series 4x4 DVLED Videowall</p>	<p>BT93INFWP-C-4X4</p> <p>Ceiling Mount for INFILED WP Series 4x4 DVLED Videowall</p>
---	---	--	---

© 2019 B-Tech Av Mounts. All rights reserved. This information is for informational purposes only and does not constitute an offer. The information is subject to change without notice. B-Tech Av Mounts and the B-Tech logo are registered trademarks of B-Tech Av Mounts. All other trademarks are the property of their respective owners. B-Tech Av Mounts is not responsible for any damage caused by improper use, installation, or modification of any part of this product. B-Tech Av Mounts is not responsible for any damage caused by improper use, installation, or modification of any part of this product. B-Tech Av Mounts is not responsible for any damage caused by improper use, installation, or modification of any part of this product. B-Tech Av Mounts is not responsible for any damage caused by improper use, installation, or modification of any part of this product.