



57.120

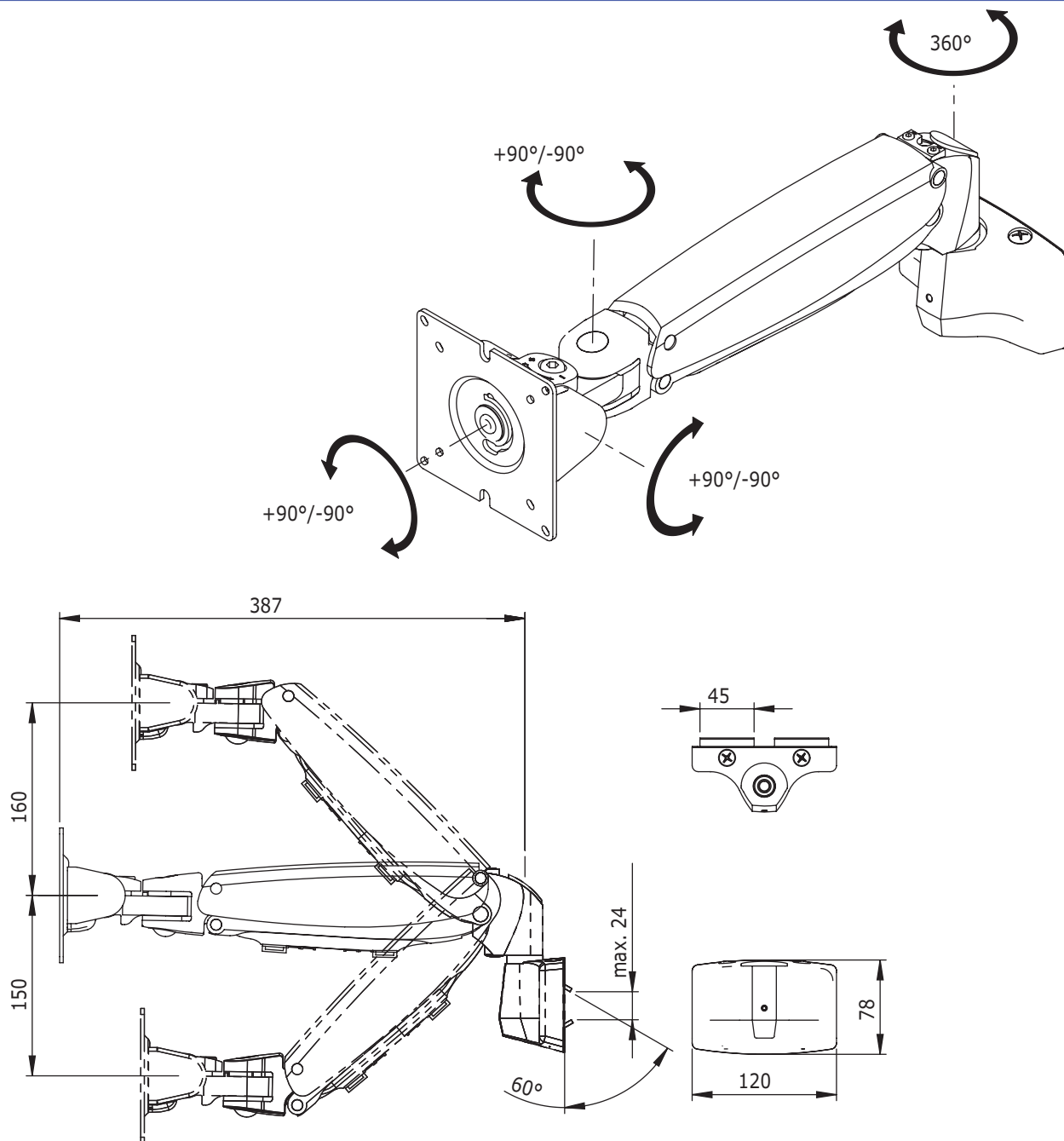
ViewMaster M6 Monitor Arm 120

The ViewMaster M6 HD Slat Rail monitor arm is equipped with a slat rail adapter that can be easily mounted on almost every slat rail or toolbar. The unique clamping mechanism can be tightened or loosened simply by adjusting the Philips-head screw on top. The LCD arm itself is height adjustable over step less range of 310mm

- Easily adjustable/removable wall mount for slat walls
- VESA rotation lock/limiter at 0°, plus 90° and minus 90°
- HD spring assisted tilting mechanism
- Parallel mechanism
- Step less height adjustability: 310mm
- Integrated/concealed cable management for 4 cables
- Die-cast aluminium
- VESA: MIS-D 75 x 75/100 x 100mm compatible
- Rotate 180°, tilt 180°, lateral 180°
- Weight capacity: 8kg-20kg (up to 24"/24"W)
- Maximum reach: 380mm
- Touch screen stable
- Slat wall protecting nylon surface
- Clamp capacity 30mm
- Clamping bracket depth 8mm
- Hardened steel clamping brackets
- Comes with HD slat rail adapter (see datasheet 53.036)



ViewMaster



DFX.# 57.120



silver



500 x 285 x 135mm



3,3kg



805410571207



24"W/61cm



8-20kg



310mm



$+90^\circ/-90^\circ$



$+90^\circ/-90^\circ$



$+90^\circ/-90^\circ$



75/100mm

Dealer