

GoGear



SA4310

SA4320

SA4340

without FM tuner

SA4315

SA4325

SA4345

with FM tuner

www.philips.com/welcome

Digital audio player

PHILIPS

Need help?

Please visit

www.philips.com/welcome

where you can access to a full set of supporting materials such as user manual, the latest software upgrades and answers to frequently asked questions.

Contents

1	Important safety information	3
2	Your new player	7
2.1	What's in the box	7
2.2	Register your product	7
3	Getting started	8
3.1	Overview of controls and connections	8
3.2	Main menu	9
3.3	Install	9
3.4	Connect and Charge	10
3.4.1	Charge your player	10
3.4.2	Battery level indication	10
3.5	Transfer	11
3.6	Enjoy	11
3.6.1	Power on and off	11
3.6.2	Navigate the menu	11
3.6.3	Lock switch	11
4	Organize and transfer music with Windows Media Player 11	12
4.1	About Windows Media Player 11	12
4.1.1	Before installing Windows Media Player 11 (optional)	12
4.1.2	Installing Windows Media Player 11	13
4.1.3	Rolling back to a previous version of Windows Media Player	16
4.1.4	More about rolling back to a previous version of Windows Media Player	17
4.2	Music transfer	17
4.2.1	Add music files to Windows Media Player Library	18
4.2.2	Switch between music library in Windows Media Player and your player	19
4.2.3	Rip songs from a CD	20
4.2.4	Buy music online	22
4.3	Sync your Windows Media contents to your player	23
4.3.1	Set up your player	23
4.3.2	Switch between automatic and manual sync	24
4.3.3	Select and prioritise what syncs automatically	24
4.3.4	Select files and playlists for manual sync	25
4.3.5	Shuffle manual sync items on your player	27
4.3.6	Copy files from your player to your computer	28
4.4	Manage your files in Windows Media Player	29
4.4.1	Search for music via Windows Media Player	29
4.4.2	Delete files from Windows Media Player library	29
4.4.3	Delete files from your player	30
4.4.4	Edit song information via Windows Media Player	31
4.4.5	Format your player via Windows Media Player	32

Contents

5	Detail operation	33
5.1	Music mode	33
5.1.1	Control	33
5.1.2	Playback features	34
5.1.3	Folder view	34
5.1.4	Equalizers	35
5.2	Radio*	36
5.2.1	Select your FM region	36
5.2.2	Auto tune	36
5.2.3	Play a preset radio station and tune the station	37
5.3	Recordings	37
5.3.1	Make recordings	37
5.3.2	Play back recordings	38
5.3.3	Upload recordings to the computer	38
5.3.4	Delete recordings	38
5.4	Lighting effects	38
5.5	Settings	39
5.6	Use your player to store and carry data files	40
6	Update your player	41
6.1	Manually verify whether your firmware is up to date	41
7	Frequently asked questions	42
8	Technical data	44
9	Glossary	46

* *FM radio is only available to some regional versions.*

I Important safety information

General maintenance

To avoid damage or malfunction:

- Do not expose the player to excessive heat caused by heating equipment or direct sunlight.
- Do not drop your player or allow objects to fall on your player.
- Do not allow your player to be submerged in water. Do not expose headphone socket or battery compartment to water, as water entering the set may cause major damage.
- Do not use any cleaning agents containing alcohol, ammonia, benzene, or abrasives as these may harm the set.
- Active mobile phones in the vicinity may cause interference.
- Back up your files. Please ensure that you retain the original files you have downloaded to your device. Philips is not responsible for any loss of data if the product becomes damaged or not readable / legible.
- Manage (transfer, delete, etc.) your music files only with the supplied music software to avoid problems!

About operating and storage temperatures

- Operate in a place where temperature is always between 0 and 35°C (32 to 95°F)
- Store in a place where temperature is always between -20 and 45°C (-4 to 113°F)
- Battery life may be shortened in low temperature conditions.

Replacement parts/accessories

Visit www.philips.com/support to order replacement parts/accessories.

Hearing Safety

Listen at a moderate volume.

- Using headphones at a high volume can impair your hearing. This product can produce sounds in decibel ranges that may cause hearing loss for a normal person, even for exposure less than a minute. The higher decibel ranges are offered for those that may have already experienced some hearing loss.
- Sound can be deceiving. Over time your hearing “comfort level” adapts to higher volumes of sound. So after prolonged listening, what sounds “normal” can actually be loud and harmful to your hearing. To guard against this, set your volume to a safe level before your hearing adapts and leave it there.



To establish a safe volume level:

- Set your volume control at a low setting.
- Slowly increase the sound until you can hear it comfortably and clearly, without distortion.

Listen for reasonable periods of time:

- Prolonged exposure to sound, even at normally “safe” levels, can also cause hearing loss.
- Be sure to use your equipment reasonably and take appropriate breaks.

Be sure to observe the following guidelines when using your headphones.

- Listen at reasonable volumes for reasonable periods of time.
- Be careful not to adjust the volume as your hearing adapts.
- Do not turn up the volume so high that you can't hear what's around you.
- You should use caution or temporarily discontinue use in potentially hazardous situations.
- Do not use headphones while operating a motorized vehicle, cycling, skateboarding, etc.; it may create a traffic hazard and is illegal in many areas.

Important (for models supplied with headphones):

Philips guarantees compliance with the maximum sound power of its audio players as determined by relevant regulatory bodies only with the original model of provided headphones. In case this one needs replacement, we recommend that you contact your retailer to order a model identical to that of the original, provided by Philips.

Copyright information

All other brands and product names are trademarks of their respective companies or organizations.

Unauthorized duplication of any recordings whether downloaded from the Internet or made from audio CDs is a violation of copyright laws and international treaties.

The making of unauthorized copies of copy-protected material, including computer programmes, files, broadcasts and sound recordings, may be an infringement of copyrights and constitute a criminal offence. This equipment should not be used for such purposes.

This product is protected by certain intellectual property rights of Microsoft Corporation. Use or distribution of such technology outside of this product is prohibited without a license from Microsoft or an authorized Microsoft subsidiary.

Content providers are using the digital rights management technology for Windows Media contained in this device ("WM-DRM") to protect the integrity of their content ("Secure Content") so that their intellectual property, including copyright, in such content is not misappropriated. This device uses WM-DRM software to play Secure Content ("WM-DRM Software"). If the security of the WM-DRM Software in this device has been compromised, Microsoft may revoke (either on its own or upon the request of the owners of Secure Content ("Secure Content Owners")) the WM-DRM Software's right to acquire new licenses to copy, display and/or play Secure Content. Revocation may also prevent your device's ability to transfer, store, copy, display and/or play Secure Content which you have previously stored on your Device. Revocation does not alter the WM-DRM Software's ability to play unprotected content. A list of revoked WM-DRM Software is sent to your device whenever you download a license for Secure Content from the Internet or from a PC. Microsoft may, in conjunction with such license, also download revocation lists onto your device on behalf of Secure Content Owners, which may disable your device's ability to copy, display and/or play Secure Content.

In the event of revocation, Philips will attempt to make available software updates to restore some or all of your device's ability to transfer, store, access, copy, display and/or play Secure Content. However, the ability to make such updates available does not rest solely with

Philips. Philips does not guarantee that, after revocation, such software updates will be available. If such updates are not available, your device will not have the ability to transfer, store, copy, display and/or play Secure Content - even Secure Content which you have previously stored on your device.

In addition, even if such software updates are available, they may not enable your Device to transfer, store, copy, display, and/or play Secure Content which was previously stored on your Device. In some cases you may be able to transfer the content from the PC. In other cases, you may have to repurchase previously obtained Secure Content.

To summarize - Microsoft, Secure Content Owners, and Secure Content distributors may deny you access, or restrict your access, to Secure Content. They may also disable your device's ability to transfer, store, copy, display and/or play Secure Content even after you have paid for and obtained it. Neither your consent nor the consent or approval of Philips is necessary for any of them to deny, withhold or otherwise restrict your access to Secure Content or to disable your device's ability to transfer, store, access, copy, display, and/or play Secure Content. Philips does not guaranty that you will be able to transfer, store, access, copy, display, and/or play Secure Content.

The Windows Media and the Windows logo are registered trademarks of Microsoft Corporation in the United States and/or other countries.

Data logging

Philips is committed to improving the quality of your product and enhancing the Philips user experience. To understand the usage profile of this device, this device logs some info / data to the non-volatile memory region of the device. These data are used to identify and detect any failures or problems you as a user may experience while using the device. The data stored, for example, will be the duration of playback in music mode, duration of playback in turner mode, how many times battery low was encountered, etc. The data stored do not reveal the content or media used on the device or the source of downloads. The data stored on the device are retrieved and used ONLY if the user returns the device to the Philips service centre and ONLY to simplify error detection and prevention. The data stored shall be made available to user on user's first request.

Disposal of your old product

Your product is designed and manufactured with high quality materials and components, which can be recycled and reused.



When this crossed-out wheeled bin symbol is attached to a product, it means the product is covered by the European Directive 2002/96/EC.

Please be informed about the local separate collection system for electrical and electronic products.

Please act according to your local rules and do not dispose of your old product with your normal household waste. The correct disposal of your old product will help prevent potential negative consequences to the environment and human health.

Modifications

Modifications not authorized by the manufacturer may void user authority to operate this device.

Notice for USA

Note:

This equipment has been tested and found to comply with the limits for a Class B digital device, pursuant to part 15 of the FCC Rules. These limits are designed to provide reasonable protection against harmful interference in a residential installation. This equipment generates, uses, and can radiate radio frequency energy and, if not installed and used in accordance with the instruction manual, may cause harmful interference to radio communications.



However, there is no guarantee that interference will not occur in a particular installation. If this equipment does cause harmful interference to radio or television reception, which can be determined by turning the equipment off and on, the user is encouraged to try to correct the interference by one or more of the following measures:

- Relocate the receiving antenna.
- Increase the separation between equipment and receiver.
- Connect the equipment into an outlet on a circuit different from that to which the receiver is connected.
- Consult the dealer or an experienced radio/TV technician for help.

Notice for Canada

This Class B digital apparatus complies with Canadian ICES-003.

The set complies with the FCC-Rules, Part 15 and with 21 CFR 1040.10. Operation is subject to the following two conditions:

- This device may not cause harmful interference, and
- This device must accept any interference received, including interference that may cause undesired operation.

Notice for the European Union

This product complies with the radio interference requirements of the European Union.

2 Your new player

With your newly purchased player, you can enjoy the following:

- MP3 and WMA playback
- FM radio*
- Voice Recording

2.1 What's in the box

The following accessories are included with your player:



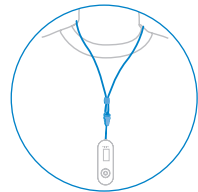
Player



Headphones



USB cable



Neck strap



Quick start guide



CD-ROM containing Windows Media Player 11, Philips Device Manager, User Manual and Frequently Asked Questions

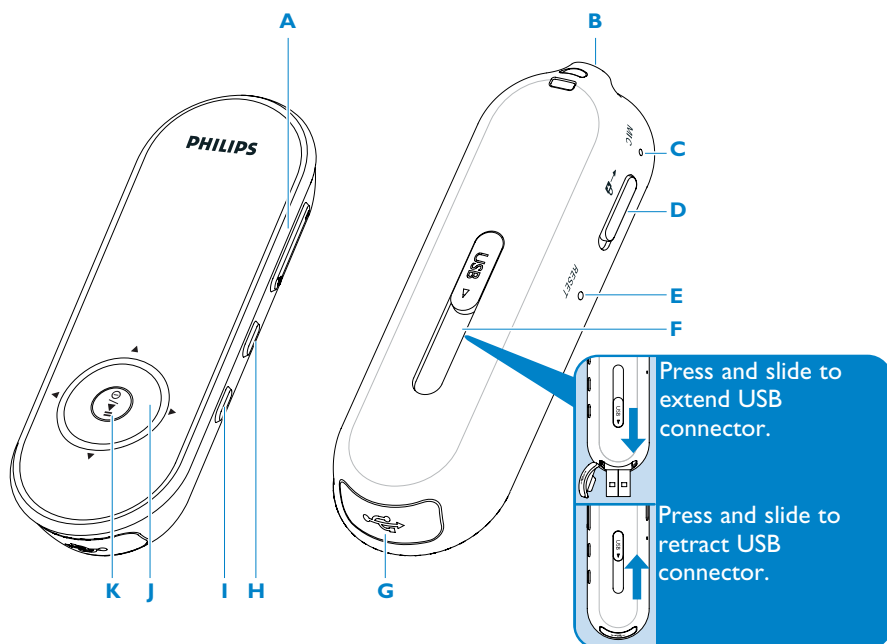
2.2 Register your product

We strongly recommend that you register your product in order to gain access to free upgrades. To register your product, please log on to www.philips.com/welcome so that we can inform you as soon as new updates become available.

* FM radio is only available to some regional versions.

3 Getting started






3.1 Overview of controls and connections



A	- Vol +	Control volume
B		Headphones jack
C	Microphone	For voice recordings
D	slider	Lock all keys except volume keys
E	RESET	Reset hole
F	USB slider	Press and slide for USB
G		USB connector
H	REC	Start or stop voice recording
I	MENU	Press to access the menu / return to previous menu

J		Navigate back one menu level or exit a function During songs / recordings playback, press to go to previous songs / recordings, or press and hold to rewind
		Navigate forward one menu level or select a function During songs / recordings playback, press to go to next songs / recordings, or press and hold to fast forward
		Scroll up in the list
		Scroll down in the list
K	/	Short press to play/pause songs, long press to power on/off

3.2 Main menu

Menu	To
 Music	Play your digital music tracks
 Radio*	Listen to FM radio
 Recording	Create or listen to voice recordings
 Folder view	Browse your music tracks or recordings by folders
 Settings	Customize the settings of your player

3.3 Install

! **Important** Make sure to install the software provided in the supplied CD before connecting your player.

System requirements:

- Windows XP (SP2 or above) or Vista
- Pentium III 800MHz processor or higher
- 256MB RAM
- 200MB hard disk space
- Internet connection (preferable)
- Microsoft Internet Explorer 6.0 or later
- CD-ROM drive
- USB port

! **Important** You need **Windows XP Service Pack 2** to install and run this software.

In case you do not have this on your PC, you will be asked to install the Service Pack. Please do install this, complete the rest of your software installation and only then connect your device.

This is critical to ensure the proper working of your player when connected to the PC.

- 1 Insert the CD supplied with your product into the CD ROM drive of your PC.
- 2 Follow the on-screen instructions to complete the installation of **MediaConverter for Philips** and **Philips Device Manager**.
- 3 If the installation program does not start automatically, browse the CD contents via **Windows Explorer** and run the program by double clicking on the file ending with .exe.

Lost your CD? Don't worry, you can download the CD contents from www.philips.com/support.


* *FM radio is only available to some regional versions.*

3.4 Connect and Charge

3.4.1 Charge your player

- 1 Your player has a built-in USB rechargeable battery. To charge your player, press and slide out the USB connector. Connect your player directly to your computer's USB port.
> A USB connection screen will be shown as soon as your player is connected.



- 2 Charge your player for 4 hours** or until the battery icon  stops blinking.

** Rechargeable batteries have a limited number of charge cycles and may eventually need to be replaced. Battery life and number of charge cycles vary by use and settings.

3.4.2 Battery level indication

The approximate power levels of your battery are indicated as follows:



 Battery is full

 Battery is two-thirds full

 Battery is half full

 Battery is low

 Battery is empty

 **Note** When the batteries are almost empty, the low battery screen  blinks. Your player will power down in less than 60 seconds. Your player will save all settings and un-finished recordings before it powers down.

3.5 Transfer

You can transfer music to your player using Windows Media Player. See **Organize and transfer pictures and music with Windows Media Player 11** section of this user manual for more details.

3.6 Enjoy

3.6.1 Power on and off

To power on, press ►|| until the Philips welcome screen appears.

To power off, press and hold ►|| until there is no display on the screen.

✳ **Tip** Your player automatically powers down if there is no operation and no music played for 10 minutes.

3.6.2 Navigate the menu

Your player has an intuitive menu navigation system to guide you through various settings and operations. Use ◀, ▶, ▲, ▼ to browse through menus. Press ►|| to confirm your selection.

To	Do this
Return to previous menu	Press ◀ or MENU
Return to main menu	Press and hold MENU
Browse through menus	Press ◀ or ▶
Scroll through a list	Press ▲ or ▼
Superscroll™	Press and hold ▲ or ▼
Select an option	Press ▶
Confirm a selection	Press ►

3.6.3 Lock switch

The player has a lock switch to prevent any accidental operation. When you slide the lock slider to the position 🔒 while the power is on, 🔒 appears on the screen and all function keys are disabled except for -VOL + to adjust the volume. Slide the lock switch to unlock position and the buttons function as normal.

4 Organize and transfer music with Windows Media Player 11

4.1 About Windows Media Player 11

While your player will work with **Windows Media Player 10**, we suggest that you use **Windows Media Player 11** for a more enhanced media experience, both on the computer and on your player.

Windows Media Player 11 is an all-in-one playback and recording program that lets you play your CDs, rip CD tracks to your hard disk, transfer media files to your player, etc. This chapter describes the steps that you need to follow to successfully set up and transfer music to your player. For more information, see Windows Media Player Help on your computer or visit www.microsoft.com/windows/windowsmedia/player/faq/default.mspx

! **Important** Make sure that you have installed the **Windows Media Player 11** software provided in the by-packed CD for music transfer.

You must be logged on as an administrator or a member of the Administrators group to perform the following procedures. For more information, please visit www.microsoft.com

4.1.1 Before installing Windows Media Player 11 (optional)


If necessary, before you install **Windows Media Player 11**, go to Windows Update and install any high-priority updates that are available for your computer.

Perform the following steps if you wish to save media information and star ratings to your media file, as well as back up your existing data:


- 1 In **Windows Media Player 10**, click **Tools**, and then click **Options**.
- 2 Click the **Library** tab, select the **Maintain my star ratings as global ratings in the media files** check box.
 - > *The user ratings for your songs will be saved in your media files rather than in your library database file (this may take several minutes).*
- 3 Click **Tools**, and then click **Process media information now**.
 - > *This ensures that your ratings (and any changes that you have made to other media information) are saved to your media files immediately.*
- 4 Select **Start > All Programs > Accessories > System Tools > Backup** to backup your existing data.

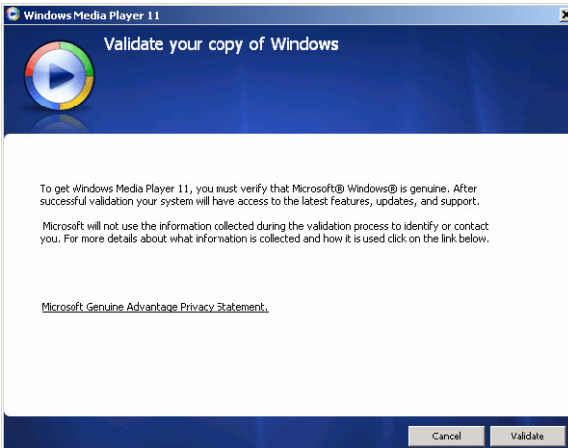
4.1.2 Installing Windows Media Player 11

1 Insert the by-packed CD into the CD ROM drive of your computer.

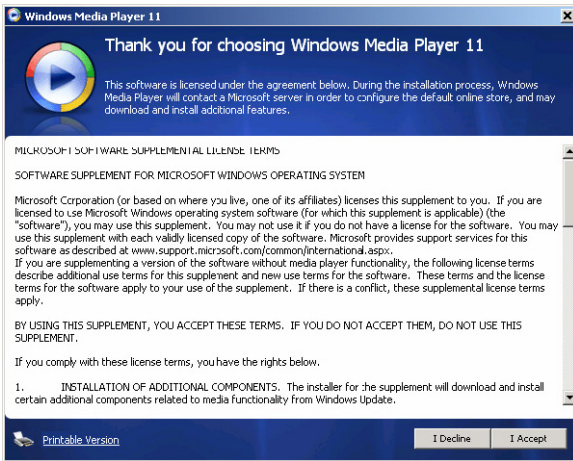
 **Note** If the installation program does not start automatically, browse the CD contents via **Windows Explorer** and run the program by double clicking on the file ending with **.exe**.

2 Follow the onscreen instructions to complete the installation of **Windows Media Player 11**.

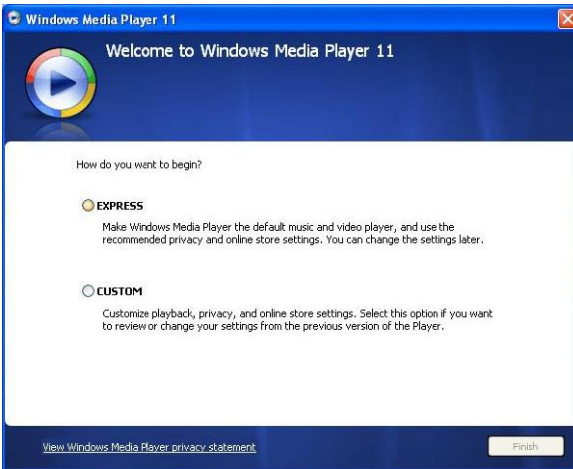
 **Note** If the following dialog boxes appear during installation, read through the texts before you proceed with the installation:



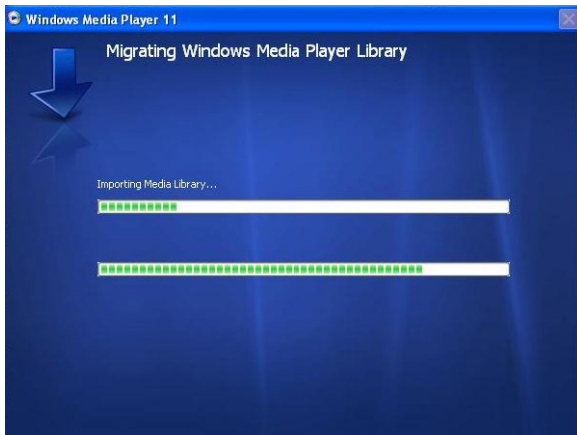
3 Click **Validate** to continue.



4 Click **I Accept** to continue.



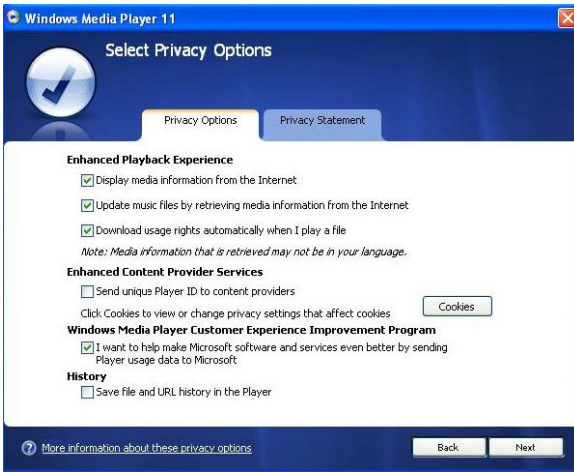
5 Select **EXPRESS** and click **Finish**.



Note Your existing media library is currently migrating to **Windows Media Player 11**. This may take several minutes depending on the size of your existing media library.



6 Click on the checkboxes to select the file types that you want **Windows Media Player** to play by default or click **Select all** and then click **Finish**.



- 7 Click on the checkboxes to select your privacy options and then click **Next** to complete the necessary settings.

4.1.3 Rolling back to a previous version of Windows Media Player

If you encounter some problems with **Windows Media Player 11**, you can simply roll back to the version that was previously on your computer.

- 1 Disconnect your player from your computer.
- 2 Select **Start**, and then click **Control Panel**.
- 3 In the **Control Panel**, select **Add or Remove Programs**.
- 4 Select **Windows Media Player 11**, and then click **Remove**.
 - > A confirmation dialog box appears.
- 5 Click **OK**.
- 6 When the rollback process is completed (this may take several minutes), click **Restart**.
- 7 Select **Start**, and then click **Control Panel**.
- 8 In the Control Panel, select **Add or Remove Programs**.
- 9 Select **Windows Media Format 11 Runtime**, and then click **Remove**.
 - > A confirmation dialog box appears.
- 10 Click **OK**.
 - > A second confirmation dialog box appears.
- 11 Click **OK**.

- 12 When the rollback process is completed (this may take several minutes), click **Restart**.
- 13 Select **Start**, and then click **Control Panel**.
- 14 In the Control Panel, select **Add or Remove Programs**.
- 15 Select **Microsoft User-Mode Driver Framework Feature Pack 1.0**, and then click **Remove**.
- 16 Follow the instructions that appear in the **Software Update Removal Wizard**.
- 17 If the Wudf01000 confirmation dialog box appears, click **Yes** to continue. When the software removal process is completed (this might take several minutes), click **Finish**.

4.1.4 More about rolling back to a previous version of Windows Media Player

If you roll back to a previous version of **Windows Media Player**, and your player becomes undetectable by Windows or **Windows Media Player**, perform the following procedures:

- 1 Switch on your player and connect it to your computer using the supplied USB cable.
 - 2 Right-click **My Computer**, and then click **Manage**.
 - 3 In the left pane, click **Device Manager**.
 - 4 In the right pane, click on the "+" sign beside **Portable Devices**.
 - 5 Right-click **GoGear SA43xx**, and then click **Uninstall**.
 - 6 In the confirmation dialog box, click **OK** to uninstall the player.
 - 7 Disconnect your player from your computer, make sure it is still switched on, and then connect it to your computer again.
- > *Windows will detect your device and automatically re-install it. Within a minute or two, GoGear SA43xx will reappear in the Portable Devices section of Device Manager.*

4.2 Music transfer

You can view and manage your music files using **Windows Media Player**.

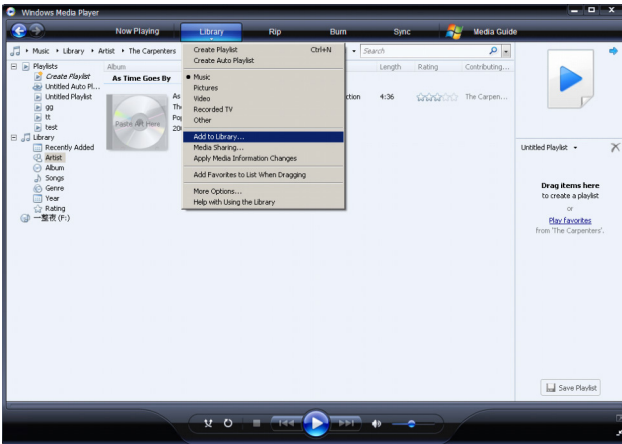
 **Important** We recommend that you always use **Windows Media Player** to transfer music to your player.

4.2.1 Add music files to Windows Media Player Library

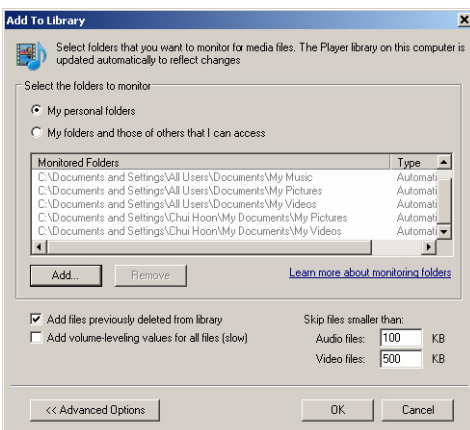
By default, **Windows Media Player** automatically loads all the music files stored in your **My Music** folders into the library. If you add new files to these folders, they will also be automatically added to the library.

Add music files that are stored elsewhere on your computer or computer network

- 1 Select **Start > All Programs > Windows Media Player** to launch **Windows Media Player** program.
- 2 Click the down arrow beneath the **Library** tab and select **Add to Library ...**



> **Add to Library** dialog box appears.



- 3 Click **<<Advanced Options** to expand the dialog box.

4 Click **Add...**

> *Add folder dialog box appears.*

5 Select a folder in which you have kept your music files and click **OK**.

6 Return to Add to library dialog box and click **OK**.

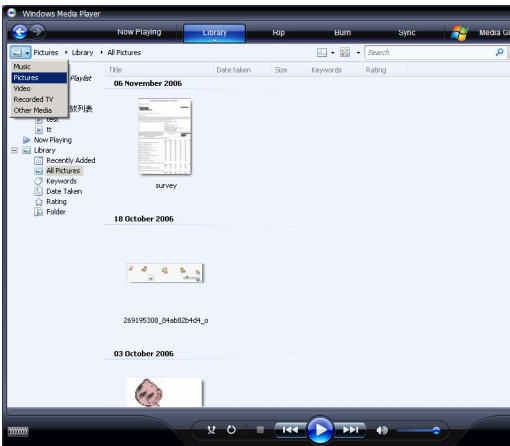
> **Windows Media Player** will start scanning the folder and add available music files to the library.

7 Click **Close** when done.

✳ **Tip** Windows Media Player is configured to skip audio files that are smaller than 100KB. To include files smaller than 100KB, you can change the default settings within the Add to library dialog box.

4.2.2 Switch between music library in Windows Media Player and your player

To switch between music library, simply click the arrow on the top left of Windows Media Player and select the category you want to view.



4.2.3 Rip songs from a CD

If you want to transfer music from a CD to your player, you need to create a digital copy of the music on your computer first. This is called Ripping.

- 1 Start **Windows Media Player**.
- 2 Click the down arrow beneath the **Rip** tab and select **Format** to choose the format you want.



- 3 Click the down arrow beneath the **Rip** tab and select **Bit Rate** to choose the bit rate you want.



✿ **Tip** A higher bit rate produces a better sound quality, but the file size will be larger. The recommended format for your player is 128kbps MP3 or 64kbps WMA.

4 Insert the Audio CD into your computer's CD drive.

> All the tracks from the CD are listed. By default, **Windows Media Player** will start to rip all the songs in the CD. To modify this option, click the down arrow beneath the **Rip** tab and select **Rip CD Automatically When Inserted > Never**.



! **Important** Make sure that you are connected to the Internet before you start ripping so that **Windows Media Player** can download the album and track information from an online music database. If your computer is not connected to the Internet, you will have to enter the album and track information manually.

As Windows Media Player may not always identify the right song on the CD and the online music database may not always have the correct information (especially for new album releases or albums from lesser-known artists), you may need to manually edit or enter the album and track information. See **Edit song information via Windows Media Player**.

- 5 Select the songs that you want to rip by clicking on the checkboxes.



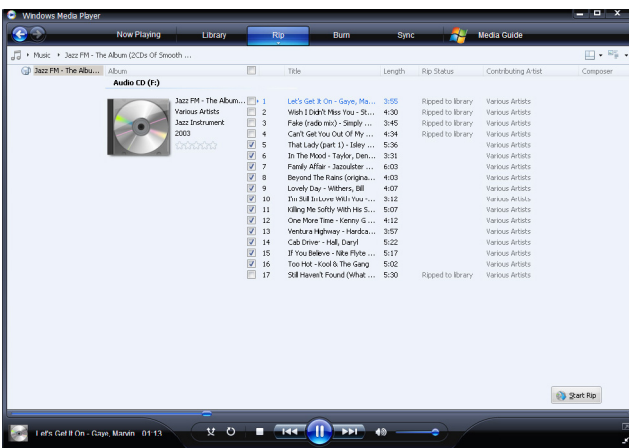
- 6 Click **Start Rip**.


> The selected tracks will be converted and added to **Windows Media Player** library.

4.2.4 Buy music online

If you want to buy music online, you need to select a music store.

- 1 Start **Windows Media Player**.
- 2 Click the down arrow beneath the **Media Guide** tab and select **Browse all Online Stores**.
- 3 Choose a store and follow the on-screen instructions.



 **Note** Depending on where you are and the language used, the list of stores may differ from what is shown here.

> After you have bought a song or an album, it will appear in **Windows Media Player** library.

4.3 Sync your Windows Media contents to your player

You can sync your music to your player using **Windows Media Player**. Simply connect your player to your computer using the supplied USB cable, set up sync, and you will be ready to sync your media library to the player.

When you connect your player to the computer for the first time, **Windows Media Player** automatically selects the sync method (automatic or manual) that works best for your player.

Automatic: If your player has sufficient storage space (at least 4GB of free space) and your entire media library can fit on your player, your entire media library will be automatically copied to your player as soon as you connect it to your computer.

Manual: If your entire media library cannot fit on the player, then you will be prompted to manually select specific files or playlists that you want to transfer to your player.

4.3.1 Set up your player

1 Start **Windows Media Player**.

2 Switch on your player and then connect it to your computer using the supplied USB cable.


> If prompted, select the option to sync the device using **Windows Media Player**.

3 If **Windows Media Player** selects to sync your device automatically, click **Finish**.

> Your entire library will sync to your player. Thereafter, every time you connect your player to your computer, your player will sync automatically. You can also select and prioritise what syncs automatically (see **Select and Prioritise What Syncs Automatically**).

4 If **Windows Media Player** selects to sync your device manually, click **Finish**.

> You then need to click the **Sync** tab and select the files and playlists you want to sync manually (see **4.3.4 Select files and playlists for Manual Sync**).

 **Important** Do not disconnect your player while transferring is in progress. If you disconnect your player, the transfer will not be complete and Windows might not be able to recognize your player afterwards. To rectify this problem, perform steps 1 - 7 in **4.1.4 More about rolling back to a previous version of the Player**.

4.3.2 Switch between automatic and manual sync

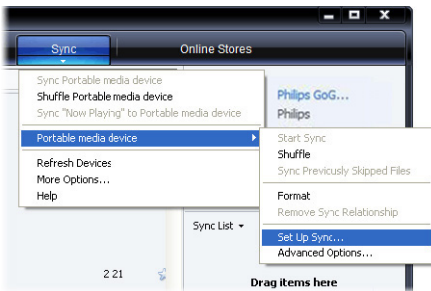
After your player is set up the first time, depending on your preference, you can switch between automatic and manual sync.

- 1 Click the down arrow beneath the **Sync** tab, select **Philips GoGear SA43xx > Set Up Sync**.
- 2 Select or clear the **Sync this device automatically** check box.

4.3.3 Select and prioritise what syncs automatically

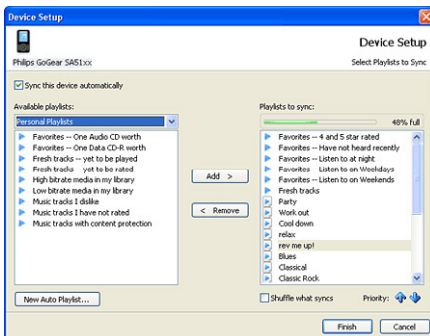
If **Windows Media Player** has selected to sync your device automatically, you can choose not to sync your entire media library. You can choose what you wish to sync from existing playlists or create new playlists. These playlists you have selected will then sync to your player every time you connect it to your computer.

- 1 Click the down arrow beneath the **Sync** tab and select **Philips GoGear SA43xx > Set Up Sync**.

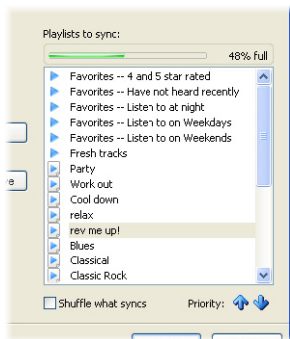


> The **Device Setup** dialog box appears.

- 2 In the **Available playlists** pane, select the existing playlists you want to sync and then click **Add**.



- 3 To create a playlist, click **New Auto Playlist** and follow the steps on the screen to specify criteria for files in the auto playlist (for details on how to create an auto playlist, see **4.4.2 Create an Auto Playlist**).
- 4 To remove a playlist, click the playlist in the list of **Playlists to sync**, and then click **Remove**.
- 5 In the **Playlists to sync** pane, select a playlist and click the **Priority** arrows to arrange them in the order that you want them to sync.



- > *If your player is full before sync is complete, then the files and playlists that are lower in priority on the list will not sync.*

✳ **Tip** If your player has limited storage capacity, or if your media library has grown too large to fit on your player, you can shuffle the files that are in the playlists you have selected to sync. To do so, select the **Shuffle what syncs** check box. Thereafter, every time you connect your player to the computer, the files on your player are removed and a new set of files (from the **Playlists to sync** pane) are added to the device.

4.3.4 Select files and playlists for manual sync

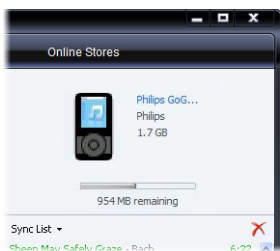
If you sync manually, you must create a list of files and playlists you want to sync. You can also shuffle which files from your playlists to sync to your player.

- 1 Start **Windows Media Player**.
- 2 Switch on your player and then connect it to your computer using the supplied USB cable.
- 3 Click the **Sync** tab.
- 4 Drag the files and playlists that you want to sync from the Contents pane to the Sync List pane. You can also right-click on the file or playlist and select **Add to "Sync List"**.

✳ **Tip** To switch between music and pictures library, simply click the arrow on the top left of **Windows Media Player** and select the category you want to view.



- 5 In the Sync List pane, verify that the items you have selected to sync will all fit on your player. If necessary, remove items from the list.



- 6 To remove items, right-click on the item in the Sync List pane, and then select **Remove from List**.
 - 7 Click **Start Sync** button to transfer the Sync List items to your player.
- > *The progress is displayed on the bottom right of **Windows Media Player**.*

Tip If the track you are trying to sync is a protected file, you will be prompted to upgrade the security components on your computer. When this happens, play the track in **Windows Media Player** and when prompted, follow the steps on the screen to upgrade the security components. After you have upgraded your security components, sync the file to your player again.

8 If you wish to stop the transfer, click **Stop Sync**.

✿ **Tip** To select multiple files, click on one file, then press and hold the **CTRL** key on your computer keyboard and click the other files that you want to select.

To select consecutive files, click on the first file, then press and hold the **SHIFT** key on your computer keyboard and click the last file in the list that you want to select.

To select all files, click on any file to highlight it, then press and hold **CTRL + A** key on your computer keyboard.

4.3.5 Shuffle manual sync items on your player

The Shuffle Sync feature in **Windows Media Player** is able to detect the amount of space in your player and load your player with a random sampling of files.

- 1 Start **Windows Media Player**.
- 2 Switch on your player and then connect it to your computer using the supplied USB cable.
- 3 Click the down arrow beneath the **Sync** tab and select **Shuffle "Philips GoGear SA43xx"**.



4 If prompted, click **Yes** button to start synchronization. Otherwise synchronization starts immediately.

> *The progress is displayed on the bottom right of **Windows Media Player**.*

5 To stop Sync, click the down arrow beneath the **Sync** tab and select **Stop Sync** to "**Philips GoGear SA43xx**".

4.3.6 Copy files from your player to your computer

Your player supports reverse sync, which lets you copy files from your player to your computer via **Windows Media Player**.

- 1 Start **Windows Media Player**.
- 2 Switch on your player and then connect it to your computer using the supplied USB cable.
- 3 Click on **Philips GoGear SA43xx** in the left Navigation pane.
 - > *You can browse your player's contents in a variety of views, such as Recently Added, Artist, Album, Songs, etc.*

The contents on your player will be listed in the Contents pane.

 **Tip** To switch between music and pictures library in your player, simply click the arrow on the top left of **Windows Media Player** and select the category you want to view.

- 4 Navigate to the file or playlist you wish to copy from your player to your computer.
- 5 Right-click on the file or playlist and select **Copy from Device**.

4.4 Manage your files in Windows Media Player

4.4.1 Search for music via Windows Media Player

- 1 Click the **Library** tab.
- 2 To search for music files, click the arrow on the top left of **Windows Media Player** and select **Music**.
- 3 Type a few keywords of the file, such as song title, artist, etc in the search box.
> *The results of your search appear in the Contents pane as you type, and are updated as you enter each new letter of your search.*
- 3 Keep entering the keywords to fine-tune the results of your search.

4.4.2 Delete files from Windows Media Player library

- 1 Click the **Library** tab.
- 2 To delete music files, click the arrow on the top left of **Windows Media Player** and select **Music**.
- 3 Navigate to the file you wish to delete.
- 4 Right-click on the file and select **Delete**.
- 5 Select **Delete from library only** or **Delete from library and my computer** and click **OK**.

4.4.3 Delete files from your player

You can also use **Windows Media Player** to manage the files stored on your player. When you connect your player to the computer, the contents on your player will be displayed in **Windows Media Player**. You can then delete files or playlists, just as you would any other files displayed in **Windows Media Player**.

1 Click on **Philips GoGear SA43xx** in the left Navigation pane.

> You can browse your player's contents in a variety of views, such as *Recently Added*, *Artist*, *Album*, *Songs*, etc.

The contents on your player will be listed in the Contents pane.

2 To delete music files, click the arrow on the top left of **Windows Media Player** and select **Music**.

3 Navigate to the file you wish to delete.

4 Right-click on the file and select **Delete**.

5 Click **OK**.



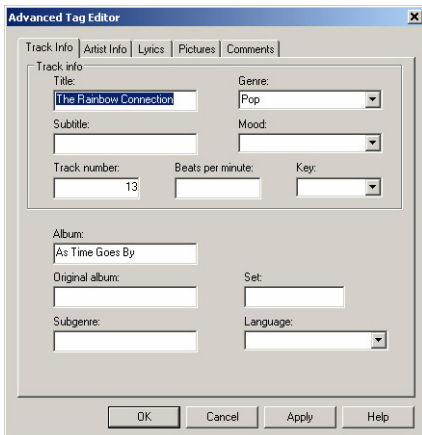
4.4.4 Edit song information via Windows Media Player

- 1 Click the **Library** tab.
- 2 Navigate to the song you wish to edit.
- 3 Right-click on the song and select **Advanced Tag Editor** from the pop-up menu.



> The **Advanced Tag Editor** dialog box appears.

- 4 Select the appropriate tab and enter or edit the information.



- 5 Click **OK** to save your changes.

4.4.5 Format your player via Windows Media Player

You can reformat the hard disk on your player to erase all data.

- 1 Start **Windows Media Player**.
- 2 Switch on your player and then connect it to your computer using the supplied USB cable.
- 3 Click the down arrow beneath the **Sync** tab and select **Philips GoGear SA43xx > Format**.



5 Detail operation

5.1 Music mode (also applicable to playback of recordings)

5.1.1 Control

You can do the following action during music playback:

To	Do this
Play / Pause music	Press ►
Skip to next song	Press ►
Return to previous song	Press ◀
Fast forward	Press and hold ►
Fast rewind	Press and hold ◀
Return to browsing menu	Press MENU key
Increase volume	Press VOL +
Decrease volume	Press VOL -



- 1 From the main menu, select 🎵 to enter music mode.
You can search from the following music options:

All songs	▶	Alphabetically listed tracks		
Artists	▶	Alphabetically listed artists	▶	Alphabetically listed albums
Albums	▶	Alphabetically listed albums	▶	Tracks listed in album order





- 2 Press ▲ or ▼ to scroll through the list.
- 3 Press ► to select or press ◀ to return to previous level.
- 4 Press ►|| to play your selection.

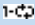
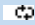
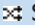
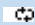
🌟 **Tip Superplay™** allows you to playback the selected music or album immediately at any point by pressing ►|| on the selection.

5.1.2 Playback features

Play modes

You can set your player to play songs either randomly or repeatedly.


- 1 Press **MENU**, select  and then select **Play modes**.
- 2 Press  /  to browse through the different play modes (**Off**, **Repeat 1**, **Repeat all**, **Shuffle all** and **Repeat & Shuffle**).
- 3 Press  to confirm your selection.

Icon	Meaning
Off	Normal playback
 Repeat 1	Play one song repeatedly
 Repeat all	Play all songs repeatedly
 Shuffle all	Play all songs randomly
 Repeat & Shuffle	Play all songs randomly and repeatedly






 **Note** Playmodes are not available when playing recordings.

5.1.3 Folder view

The Folder view displays your music and recordings in alphabetical order.

From the root menu, select  to enter the folder view. The Folder view displays your music according to how you arrange them in folders when you transfer them by drag and drop.

Folders and tracks will be listed according to alphabetical order.

Basic operations in Folder View	Controls to press
Go to next track / folder	Press 
Go to previous track / folder	Press 
Go into a folder	Press 
Go up one folder level	Press 
Select an item	Press 

5.1.4 Equalizers

You can set your player to play music with different EQ (equalizers).

- 1 Press **MENU**, select **⚙**, then select **Equalizer**.
- 2 Press **▲** / **▼** to select between **Rock, Pop, Jazz, Classical, Custom** or **Off**.
- 3 Press **▶||** to confirm your selection.

Custom EQ

The equalizer custom settings provide 5 adjustable bands: Bass (B), Low (L), Mid (M), High (H) and Treble (T).

- 1 Press **MENU** and select **Equalizer > Custom**.
- 2 Press **◀** or **▶** to select your band.
- 3 Press **▲** once or more to increase the band level, or press **▼** once or more to reduce the band level.
- 4 The newly set custom equalizer can be immediately heard if you are playing music.

⚙ Tip The custom EQ screen times out when there is more than 10 seconds of inactivity.

5.2 Radio*

From the main menu, select  to enter radio mode.

Connect the headphones


The supplied pair of headphones serves as a radio antenna. Make sure that it is properly connected to ensure optimal reception.

5.2.1 Select your FM region

From the main menu, select  > **Radio settings**.

5.2.2 Auto tune



1 Select **Auto tune** under Radio menu .






- > *The player will search for the stations with the strongest signals and automatically save up to 20 stations in the preset memory.
The progress bar fills from left to right until 20 stations are found, or until the end of the frequency range is reached.*










 **Tip** Stop auto tune by pressing any key except volume key.

* FM radio is only available to some regional versions.

5.2.3 Play a preset radio station and tune the station

- 1 From the Radio menu , select **Presets**.
- 2 Press  or  to browse and select the preset stations.




- 3 After you select a preset station, short press  /  can change to another preset stations.
- 4 You can also tune the frequency of selected preset station by long pressing  / .
- 5 Short press  or  to move one tuning step, long press  or  to search next nearest strongest signal.
- 6 The frequency bar indicates the change in frequency.
- 7 To confirm and save the signal, press .

5.3 Recordings

Your player allows you to make voice recordings and play back your recordings.

5.3.1 Make recordings

- 1 Press and hold **REC** to start voice recording.
 - > *Your player displays the recording progress.*
- 2 Press and hold **REC** again to stop voice recording.
 - > *Your player displays the saving progress. Your voice recording will be saved on your player. (Filename format: VOICEXXX.WAV where XXX is the recording number which will be automatically generated.)*

 **Tip** You can pause and resume a recording anytime with  key.

5.3.2 Play back recordings

You can find your recordings in the Recordings mode.

- 1 From the root menu, select **u** to enter the Recordings mode. Your player will play all your recordings alphabetically and playback will start with the last recording made.
- 2 Press **▶||** to pause the recording on playback.
- 3 Press **◀** or **▶** to play the next or previous recordings.
- 4 Press and hold **◀** or **▶** to fast forward or fast rewind the current recording on playback.

5.3.3 Upload recordings to the computer

- 1 Connect your player to your computer.
- 2 Select your player in **Windows Explorer**.
> You will find a **Voice** folder. This folder contains the recordings.
- 3 Copy and paste the recordings to any desired location on the computer.

5.3.4 Delete recordings

Recordings can only be deleted on the computer.

- 1 Connect your player to your computer.
- 2 Select your player in **Windows Explorer**.
- 3 Double click the **Voice** folder.
- 4 Select the files you want to delete and press **Delete** on your computer keyboard.

5.4 Light effects

The product features special light effects. You can activate or deactivate the effects in the **Device light effects** settings. In **Playback lighting** you can select either **Twinkle**, **Flicker**, **Heart beat**, or **Wave** as setting for light effects during playback.

5.5 Settings

You can set your preferences in your player to suit your needs.

- 1 Press **MENU** and select **⚙**.
- 2 Press **▶||** to confirm your selection, and press **▲** / **▼** to select further options.
- 3 Press **MENU** to exit the current settings screen.

Settings	Options	More options	Description
Play mode	Off / Repeat 1 / Repeat all / Shuffle all / Repeat & Shuffle		Choose the play mode option for all / selected songs.
Equalizer	Off / Rock / Pop / Jazz / Classical / Custom		Choose the equalizer for best music experience.
Language	English / French / German / Spanish / Brazilian Portuguese / Portuguese / Italian / Dutch / Swedish / Norwegian / Finnish / Hungarian / Russian / Polish / Chinese Simplified / Chinese Traditional / Japanese / Korean / Thai		Choose the language for display on screen.
Backlight	Always on / 10 Sec. / 30 Sec. / 60 Sec.		Choose the time for backlight display.
Light effects	On / Off		The product features special light effects that can be selected under Playback lighting .
Playback lighting	Wave / Twinkle / Flicker / Heart beat		Preview and select playback lighting effects. Activate this setting under Light effects .
Screen saver	Animation		Choose animation or clock as screen saver.
	Clock	Vertical / Horizontal	
	Off		
Time settings	Set time format	12-hrs / 24-hrs	Set your player's time format
	Set time	Hour / Minute	Enter hour and minute to set the time in your player.
Radio settings	Europe / USA / Asia		Choose the region in which you operate the FM
Factory settings	Restore factory settings	Cancel / Restore	Choose Restore to clear your player's current settings and restore to default factory settings.
Information	Info screen: Capacity, Free space , Firmware version		Display information of your player.

5.6 Use your player to store and carry data files

You can use your player to store and carry data files by copying data files into your player via **Windows Explorer**.

6 Update your player

Your player is controlled by an internal program called firmware. New versions of the firmware may be released after you have purchased your player.

A software program called **Philips Device Manager** will monitor the firmware status of your player and notify you if new firmware is available. You need an Internet connection for this.

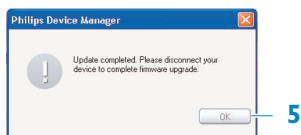
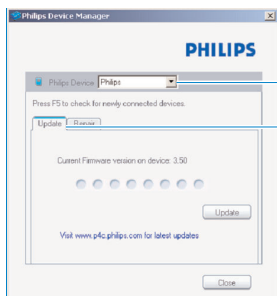
Install **Philips Device Manager** from the supplied CD or download the latest version from www.philips.com/support.

After the installation of **Philips Device Manager**, every time you connect your player to your computer, **Philips Device Manager** will automatically connect to the Internet and check for updates.

6.1 Manually verify whether your firmware is up to date

Make sure your player is charged fully.

- 1 Connect your player to the computer.
- 2 Launch **Philips Device Manager** from **Start > Programs > Philips Device Manager**.





- 3 Select your device.
- 4 Click **Update**.
 - > **Philips Device Manager** will check whether a new firmware is available on the Internet and install it on your player.
- 5 When **Update completed** appears on the screen, click **OK** and disconnect the player.
 - > A message **Updating firmware** will be displayed. The player will automatically restart after firmware is completely updated. Your player is now ready to use again.

7 Frequently asked questions

If you encounter problems with your player, go through the following points listed in the next section. Please also check out FAQs at www.philips.com/support for further help and other troubleshooting tips.

Consult your dealer or service center if you are unable to find a solution by following these hints.

 **Warning** Under no circumstances should you try to repair the set yourself, as this will invalidate the warranty.

 **Important** When the first time you connect the device to PC in recovery mode, a hardware wizard will be popped up to install the software. Please select **install the software automatically** and click **Next**, and then click Finish to complete the installation.

During the installation, a warning message stating "The Software you are installing for this hardware has not passed Windows Logo testing.", please select **Continue Anyway**, this installation will not affect your PC.

My player's start-up is slow.

After changing the player's content, the start-up time takes a little longer to rebuild the library.

My player skips songs.

The skipped song may be protected. You may not have sufficient rights to play the skipped song on your player. Check the music rights with the song provider.

My player is not recognized by Windows.

Make sure your computer is running **Windows XP** (SP2 or higher) or **Vista**.

There is no music on my player after transfer.

Are your songs in MP3 or WMA format?

Other formats will not playback on the player.

The player does not respond to any key press, and subsequently hangs or freezes.

Carry out a reset (press the reset button with a needle or fine tool).

There is no sound.

Make sure your headphones are inserted all the way into the headphones jack.

My player shows .

Switch **LOCK** slider to unlock the key press.

My player has no power or is locked up.

- Your battery may have gone flat. Please charge your player.
- You may have failed to press and hold ►|| long enough. Press and hold ►|| until the Philips welcome screen appears on display.
- Carry out a reset (press the reset button with a needle or fine tool).

If none of the above works, then you may have to use the Device Manager to recover your player:

- 1 Make sure the player is disconnected from PC and turned off.
- 2 Launch the **Philips Device Manager** at **Start > Programs > Philips Device Manager > Philips Device Manager** on your PC and click **Repair** tab.
- 3 Press and hold the ►|| button while your player is connecting to the PC.
- 4 Keep holding the key until the **Philips Device Manager** acknowledges your player and goes into recovery mode.
- 5 Click the **Repair** button and follow the instructions given by the **Device Manager**.
- 6 After the player has been repaired, disconnect it from your PC and re-start.

The player does not power on and seems dead.

Carry out a reset (press the reset button with a needle or fine tool).

Press ►|| and power up your player.

In case this does not work: Press and hold ►|| while connecting the device to the PC. Start **Device Manager**, your device will be recovered automatically.

The player displays: “Player problem! Connect to PC”.

Connect your player to the PC, open **Windows Explorer**, open **My computer**, select your player, right click and select on **Format**. Press **Start** to format your player.

 **Warning** All contents will be erased. Backup your data before formatting.

The player shows .

Connect your player to the computer. Delete unwanted files, disconnect safely and proceed with your record again.

Some songs do not show up or playback on the player.

- The audio file might be corrupted, try to playback the file on your PC first. If it does not play, rip the song again.
- Songs with bit rates higher than 320kbps are not supported by the player.
- The skipped song may be protected. You may not have sufficient rights to play the skipped song on your player. Check the music rights with the song provider.

8 Technical data

Power

- Power supply
Li-ion polymer internal rechargeable battery*
- 4 hours full charge**

Dimensions

31.5 x 18 x 90.5mm

Display

- White OLED display 64 x 128 pixels

Sound

- Channel separation
45dB
- Equalizer settings
Rock, Pop, Jazz, Classical, Custom, Off
- Frequency response
45-16000Hz
- Signal to noise ratio
> 88dB
- Output Power (RMS)
2x3mW (16Ω)

Audio playback

- Play time
15 hours**
- Compression format
MP3 (8-320kbps and VBR; Sample rates: 8, 11.025, 12, 16, 22.050, 24, 32, 44.1, 48kHz)
WMA (10-320kbps; Sample rates: 8, 11.025, 16, 22.050, 32, 44.1, 48kHz)
- ID3-tag support
Track title and artist name

Tuner / Reception / Transmission

- Tuner band
FM stereo*

Storage media

- Built-in memory capacity
SA431X 1GB NAND Flash+
SA432X 2GB NAND Flash+
SA434X 4GB NAND Flash+

Connectivity

- Headphone 3.5mm, USB 2.0++

Software

- Device manager
To restore and update
- Windows Media Player 11

System requirements

- Windows® XP (SP2 or above) or Vista
- Pentium III 800MHz processor or higher
- 256MB RAM
- 200MB hard disk space or more
- Internet connection (preferable)
- Microsoft Internet Explorer 6.0 or later
- CD-ROM drive
- USB port

- * *FM radio is only available to some regional version.*
- ** *Rechargeable batteries have a limited number of charge cycles and may eventually need to be replaced. Battery life and number of charge cycles vary by use and settings.*
- + *1MB = 1 million bytes; available storage capacity will be less.
1GB = 1 billion bytes; available storage capacity will be less.
Full memory capacity may not be available as some memory will be reserved for the player.
Storage capacity based on 4 minutes per song and 64kbps WMA encoding.*
- ++ *Actual transfer speed may vary based on your operating system and software configuration.*

9 Glossary

A

Album

A collection list of songs / pictures.

D

Digital Rights Management (DRM)

A technology that provides a persistent level of protection to digital content by encrypting it with a cryptographic key. Authorized recipients (or end users) must acquire a license in order to unlock and consume the content.

M

MP3

An audio compression format known as MPEG-1 Audio Layer 3.

R

Rip

To copy digital media content from an audio CD. Content may be converted to a different format during a ripping process.

Root menu

The main menu that sits on top of the user interface structure tree.

S

Songs

An individual track or a discrete piece of audio content.

Superscroll™

A Philips trademark user interface navigator feature to enhance the speed of browsing long lists of content.

Synchronization

The process of maintaining digital media files on a portable device based on the rules specified by the users. This may require copying digital media files from a computer to a device, updating information on the device or deleting files from the device.

T

Title

The largest unit of digital media content. For CD, it may be the name of the CD.

W

WAV

A digital media file format for storing sound.

Windows Media Audio (WMA)

An audio file in Windows Media Format. The audio content of the file is encoded with one of the Windows Media Audio codecs.

PHILIPS reserves the right to make design and specification changes for product improvement without prior notice.



Be responsible
Respect copyrights

Specifications are subject to change without notice.
Trademarks are the property of Koninklijke Philips
Electronics N.V. or their respective owners
© 2007 Koninklijke Philips Electronics N.V.
All rights reserved.
www.philips.com



Printed in China
wk7341