

PFU (EMEA) Limited
 Hayes Park Central
 Hayes End Road
 Hayes Middlesex UB4 8FE
 United Kingdom

Tel: +44 (0)20 8573 4444

PFU (EMEA) Limited
 Frankfurter Ring 211
 80807 Munich
 Germany

Tel: +49 (0)89 32378 0

PFU (EMEA) Limited
 Via Nazario Sauro, 38
 20099 Sesto San Giovanni (MI)
 Italy

Tel: +39 0226294 1

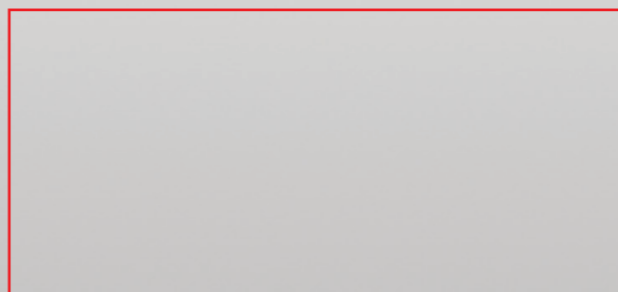
PFU (EMEA) Limited
 Camino Cerro de los Gamos, 1
 28224 Pozuelo de Alarcón
 Madrid
 Spain

Tel: +34 91 784 90 00

<http://emea.fujitsu.com/scanners>

The Scanner Quickview is also available in the following languages:

- DE
- FR
- IT
- NL
- ES
- RU



© Copyright 1993-2015. Pfu (EMEA) Limited. All rights reserved. Portal Version. R 05.15 / EN

Scanner Quickview

ScanSnap S1100i	fi-7260	fi-6400
ScanSnap iX100	fi-7180	fi-6800
ScanSnap S1300i	fi-7280	fi-5950
ScanSnap iX500	fi-5530C2	fi-65F
ScanSnap SV600	fi-6670	N7100
fi-6110	fi-6750S	
fi-7160	fi-6770	



PFU (EMEA) Limited (PFUE) offers the most comprehensive range of document scanners available on the market today. Manufactured to the highest quality standards, Fujitsu scanners have an excellent reputation for reliability.

Whether your application involves document management, archiving, workflow or forms processing, Fujitsu most likely has the optimum scanner for the capture of your documents and data.

FUJITSU SCANNERS CAN OFFER YOU:

- The ability to scan paper sizes from business card to A3 (extra long scanning possible up to 5.5m in length)
- Scan speeds from 8 to 270 images per minute
- Automatic document feeder as standard
- Simplex / duplex scanning ▪ SCSI & USB models
- Colour scanning capability as well as in black / white or greyscale
- Image enhancement for poor quality mixed colour documents
- Complementary technologies across a broad range
- Host of software bundling

ABOUT PFU

Fujitsu brand scanners are designed, manufactured and marketed worldwide by PFU Limited, a wholly owned subsidiary of Fujitsu Limited (Japan). PFU is a globally active IT provider that designs, manufactures and markets computer hardware, peripheral products and enterprise software. PFU offers a broad portfolio of document scanners for professional personal, desktop, workgroup and high-volume production and networked environments and is one of the world's leading document scanner companies. PFU has been engaged in the document imaging scanner business for more than 25 years and generates an annual turnover of over \$1 billion.

Operating in Europe, the Middle East, and Africa, PFU (EMEA) Limited is responsible for marketing and sales of Fujitsu document scanners. The European company was established in the United Kingdom in 1981 and has offices in Germany, Italy and Spain and a Marketing Suite in France.

For more information, please visit www.pfu.fujitsu.com/

SCANSNAP DOCUMENT SCANNERS



ScanSnap S1100i	4-5
ScanSnap iX100	6-7
ScanSnap S1300i	8-9
ScanSnap iX500	10-11
ScanSnap SV600	12-13

fi Series DOCUMENT SCANNERS



fi-6110	15
fi-7180, fi-7280, fi-7160 and fi-7260	16-17
fi-5530C2	18
fi-6750S	19
fi-6670 and fi-6770	20-21
fi-6400	22-23
fi-6800	24-25
fi-5950	26-27

SMALL FORMAT SCANNER

fi-65F	28
--------	----

NETWORK SCANNING

N7100	29
-------	----

OTHER

Rack2-Filer	30
Developer and Integrator Program	31
PaperStream	32-33
Assurance Programme	34-37
Cleaning & Consumable Kits	38-39
ISV Partner Programme	40-41
Imaging Channel Program	42-43
Specifications	46-48

ScanSnap S1100i



For further information visit www.scansnapit.com

The one touch ScanSnap S1100i from Fujitsu is a fully portable document scanner offering total flexibility for scanning at the office, at home or on the move.



Compatible for both the PC and Mac the S1100i scans your documents and then allows for seamless transmission of that digitised document to a folder, to an email address, printer, Salesforce Chatter, iPad® and iPhone®, Android and Kindle™ devices, Cloud services, SharePoint, editable Microsoft® applications such as Word, Excel or PowerPoint, PDF, JPG and in the case of business cards to a database package.

SCANS TO A GREATER RANGE OF MOBILE DEVICES



Seamless linking

ScanSnap S1100i comes with a linking function to popular cloud services including Dropbox, Google Docs, Evernote, SugarSync and Salesforce CRM. It is now easy to seamlessly link and save your scanned image data virtually anywhere and anytime. Scan to iPad® and iPhone®, Android™ and Kindle™ devices via the downloadable ScanSnap Connect application. Upload your document fast, securely and easily and then instantly display and share.

Powered via a USB port the S1100i is one of the smallest scanners in the world offering the ability to scan A4 documents. Scan speeds of 8 pages per minute are achievable at resolutions of 300 dpi and selectable straight or u-turn paper paths can be chosen depending on the document being scanned or space constraints.



In addition to standard A4 paper the scanner can comfortably cope with plastic ID cards as well as A3 documents through the use of an optional carrier sheet.

A continuous document feeding function allows for the smooth scanning of multiple documents or the reverse of a document. For further operator enhancement the S1100i has automated functions such as automatic deskew/orientation and colour detection all designed to scan your documents quickly and precisely.



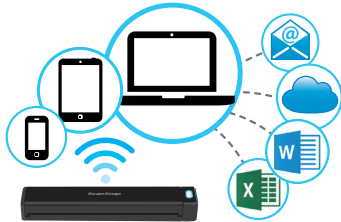
ScanSnap iX100

For further information visit www.scansnapit.com

The intuitively usable and compact ScanSnap iX100 brings cable free battery powered scanning of everyday documents to almost any environment.



Scan to both Windows and Mac operating systems directly attached by USB cable or via a Wi-Fi network, as well as to iOS and Android smart devices using ScanSnap Connect App. Even switch between a notebook and tablet on the same network for speedy capture of different documents on different devices.



Scanning is made as easy, effortless and instantaneous as possible with functions such as automatic switching between access points once set up. Additionally the specially developed built-in dual core GI processor enables enhanced performance even when networks or target devices may provide lower bandwidth or Quality of Service (QoS).

The iX100 comes with a built-in lithium battery which can process up to 260 scans* on a single charge, an included USB cable can charge the battery via a USB port or can enable hard wired scanning should the environment dictate.



Seamless linking

ScanSnap iX100 comes with a PC-hosted linking function to popular cloud services including Dropbox, Google Docs, Evernote, SugarSync and Salesforce CRM. It is now easy to seamlessly link and save your scanned image data virtually anywhere and anytime. Alternatively, scan to iPad®/iPhone® and Android devices via the downloadable ScanSnap Connect Application, this allows you to upload your document quickly and easily and then instantly display and share.

ScanSnap iX100 can comfortably process A4 documents at a speed of 5 seconds per page in colour at 300dpi. In fact A3 documents folded to A4 format size can be captured as well by either utilising an optional carrier sheet or auto stitching mode. This activates when both sides are scanned one after the other and an adjoining pattern is detected, which allows for joining both sides on screen. Scan smaller documents such as business cards or receipts either one by one or simultaneously. Choose between paper paths dependant on space concerns or document thickness.

There is a host of productivity enabling software with the ScanSnap iX100 ranging from ABBYY FineReader for ScanSnap that allows for creating editable Word, Excel and PowerPoint files, CardMinder for the creation and handling of digital business card data and ScanSnap Organizer for the enhanced organisation of scanned data. Seamlessly scan to cloud accounts and create searchable PDF files. With Quick Menu, you simply scan a document and a menu will appear allowing for the quick and instant routing to a range of destinations.



*depending on environmental and media conditions fewer or higher volumes are achievable



ScanSnap S1300i



For further information visit www.scansnap.com

The portable ScanSnap S1300i scanner provides users with a cross platform solution that offers productivity, efficiency and intelligence in a compact, high performance form factor. Digitise your documents easily and then effectively organize anywhere and at anytime.

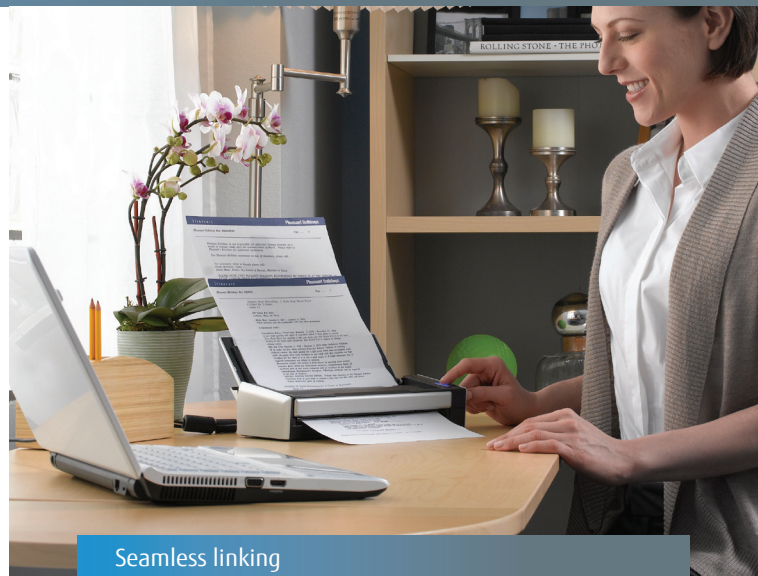


The small and powerful S1300i for PC and Mac users is a robust scanner capable of speedy double sided scanning of a range of everyday colour or black and white documentation. The 10 page automatic document feeder can accommodate mixed batches of documents ranging in thickness and in size from business card to A4.

Whether for use at home, in the office or on the move the S1300i will process documents with a single touch of a button at 12 pages per minute (24 images per minute) when mains operated or 4 pages per minute (8 images per minute) when powered directly from laptop or PC (via USB).

The S1300i has a host of intelligent features helping to minimize operator involvement before, during and after the scanning process. No need for timely preparation, interference or intervention on screen as the scanner can automatically recognise the size of each document and crop accordingly, detect and correct for skew, automatically detect colour, auto correct orientation of images regardless of feed direction and also remove any blank pages.

The S1300i ScanSnap comes bundled with ScanSnap Organizer a convenient way to view your scanned data through the use of thumbnails and then store online in simple to use filing cabinets for later retrieval. If necessary this data can automatically be converted into searchable PDF files.



Seamless linking

ScanSnap S1300i comes with a linking function to popular cloud services including Dropbox, Google Docs, Evernote, SugarSync and Salesforce CRM. It is now easy to seamlessly link and save your scanned image data virtually anywhere and anytime. Scan to iPad[®] and iPhone[®] and Android devices via the downloadable ScanSnap Connect application. Upload your document fast, securely and easily and then instantly display and share.

Also included with the scanner is ABBYY[®] FineReader for ScanSnap, which allows you to scan directly to Word, Excel or PowerPoint. Bundled business card scanning software enables users to export scanned data into Excel, Outlook or other customer relationship management tools such as Salesforce. All scanning action is controlled through ScanSnap Manager which incorporates an intuitive QuickMenu function allowing users to scan directly to applications such as the ones above or to email, to print, to a folder, to Microsoft[®] SharePoint, to a cloud service or to a smart phone or tablet using the ScanSnap Connect App in conjunction with the ScanSnap Scan to Mobile connector.

ScanSnap iX500



For further information visit www.scansnapit.com

Fujitsu's ScanSnap iX500 scanner for both Windows and Mac platforms now offers users an enhanced scanning environment in a smart and compact design with at its core a 'GI' image processing engine. Scan speeds are an impressive 25 pages or 50 images per minute at up to 300 dpi colour or 600 dpi monochrome independent of the target device or connectivity.



Scanning directly to a tablet or mobile device is achievable via a WiFi connection with the scanning operation possible directly via the smart device, USB 3.0 is now supported.

With the ability to scan mixed batches of documents from business card up to A3 in size* through the 50 page ADF, ScanSnap iX500 can reliably process your documents and can automatically apply image enhancement functions such as blank page deletion, auto deskew, auto orientation, auto size detection and auto colour detection to ensure minimal operator involvement and a scanned image that requires little or no manual intervention prior to exporting to application.

After scanning the ScanSnap iX500 user interface will offer a host of destinations for the scanned data such as 'Scan to' email, folder, print, mobile or cloud services such as Evernote, Dropbox, Google Docs, SugarSync amongst others.



Scan wirelessly to a PC or Mac as well as to a smart device.

Mac users can via the iX500 scan documents, convert to PDF and can then edit using the OS X embedded PDF editing functionalities. Windows users are able to edit the PDF using the bundled version of Adobe Acrobat. Editable Word, Excel and PowerPoint files can be created utilising the bundled version of ABBYY® FineReader which can be initiated via the ScanSnap QuickMenu which allows the possibility to route the image data directly into the MS office application required. CardMinder software allows for scanning business cards which can then be subsequently exported to your favourite database package or CRM system. This 'Quick Menu' of destinations can also be set up to display your favourite destinations or can recommend a destination based on what has just been scanned.

The iX500 is a complete out of the box scanning solution that simply and speedily automates the scanning process helping to improve every day working practices and increase productivity at the touch of a button.

For Windows users, a ScanSnap iX500 Deluxe model is available that includes 'Rack2-Filer Smart' for organising your documents in digital bookcases/files and Magic Desktop that allows you to organise your desktop by collecting scanned and genuine digital data in a clip board based way.

ScanSnap SV600



For further information visit www.scansnapit.com

The impressively versatile and intuitively usable SV600 scanner from Fujitsu is a unique premium overhead scanner offering the ability to instantly scan and capture a range of everyday documents as well as material that is not suited to a traditional ADF scanner such as bound material and delicate documents.



The SV600 has a movable head which rotates over the scanning area and captures any material within a predetermined setting. VI technology ensures that within a height of 3 cm and regardless of the depth of the scanning area the captured image remains consistently clear, thereby minimising any unevenness in image quality.

Anything from business cards up to A3 landscape can be scanned with a one button approach and "Multiple Document Detection" will enable you to scan a batch of receipts at the same time which will all be captured and individually cropped accordingly. A full A3 landscape scan takes just 3 seconds at an impressive resolution of 600 dpi in colour.



Bound documents can be scanned by the SV600 with the enhanced ability to continuously scan multiple pages without delay. The SV600 features page turning detection and timed mode to scan again after a set time. Further book scanning features include book image correction which automatically corrects any distortion caused by the curve of an open book and a user interaction retouch function.

The SV600 has been designed with busy work environments in mind so has a small footprint and robust design which allows it to be positioned such that when not in use it does not impose on daily activity. It seamlessly integrates with ScanSnap iX500 to allow for creating digital files from loose sheet and bound document sets.

ScanSnap SV600 is bundled with Rack2-Filer Smart which is a feature rich scanning and content viewing application. It incorporates an intuitive bookcase and binder interface along with an easy book creation tool which gives users a more intuitive interaction with their scanned material. The SV600 also comes bundled with Magic Desktop software.



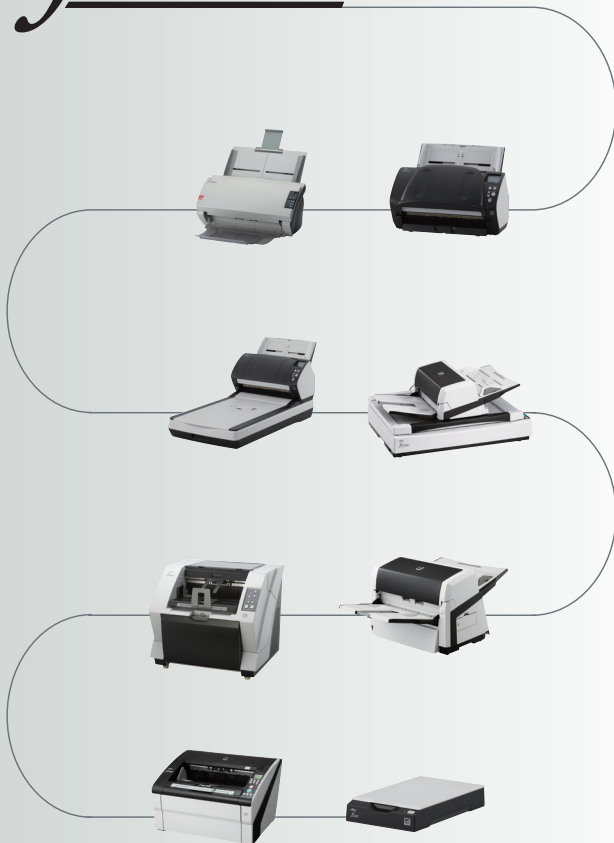


Fujitsu Image Scanner fi Series

fi-6110

fi Series

Image Scanner



Fujitsu's fi-6110 scanner is an easy and affordable way for users to embrace professional document management, enabling easy archiving, processing and forwarding of everyday documents.



Combining the scanner with customised software will substantially simplify everyday office routines in small and medium sized businesses, introducing a more efficient and productive way of handling documents.

Through PaperStream IP (TWAIN / ISIS), the scanner can be controlled from within virtually any document management solution. It can also be controlled through its programmable user panel allowing the ability for scanning directly to email, print or fax.

The ultra compact fi-6110 can scan at 20 ppm or 40 ipm in mono, greyscale and colour through the 50-sheet capacity ADF at resolutions of up to 300 dpi, the maximum optical resolution achievable is 600 dpi. Paper sizes from business card up to A4 or even extra long documents can be scanned with ease and even A3 scanning is supported by means of using an optionally available carrier sheet.

The fi-6110 features the impressive ultrasonic multifeed detection, blank page deletion and is the first Fujitsu entry level scanner model to feature automatic paper size detection and page rotation ensuring that the sorting of documents prior to scanning becomes a thing of the past.

Bundled with the fi-6110 scanner are PaperStream IP* and PaperStream Capture* which are a genuinely developed TWAIN and ISIS scanner driver and capturing software application, designed for enhanced image processing and batch scanning.

<http://emea.fujitsu.com/scanners>



80 Sheets



Simplex 80 ppm



Duplex 160 ipm

fi-7180, fi-7280, fi-7160 and fi-7260

The fi-7180, fi-7280, fi-7160 and fi-7260 scanners are ideally suited for speedy and seamless scanning of mixed batches of documents at the desktop.

These scanners feature an impressive array of automated hardware and software based functions designed to minimise operator involvement and process your documents from paper copy to application with intelligence, efficiency and reliability.

The automatic document feeder of all 4 models can accommodate up to 80 A4 sheets at a time. Colour documents can be scanned through the fi-7160 and fi-7260 at a speed of 60 ppm / 120 ipm, offering an unmatched cost-performance.

For even faster speeds the fi-7180 and fi-7280 can scan at an impressive 80 ppm / 160 ipm, ensuring solid performance and quality results. All speeds quoted are A4 Portrait at 200 or 300 dpi. Additionally the fi-7280 and fi-7260 feature a flatbed for the scanning of delicate or bound documents. A USB 3.0 interface ensures fast transmission of scanned imagery to the computer.

Status monitoring is at the fingertips of the fi-7180, fi-7280, fi-7160 and fi-7260 user and this is made instantly possible with the inclusion of an LCD that displays a host of useful information such as number of sheets scanned and general status. Furthermore a central administration function allows the possibility to monitor scanner running status, update drivers and batch scanning software applications from one central location and this can be extended to cover all scanners that may be located even across multiple locations.



80 Sheets



Simplex 60 ppm



Duplex 120 ipm

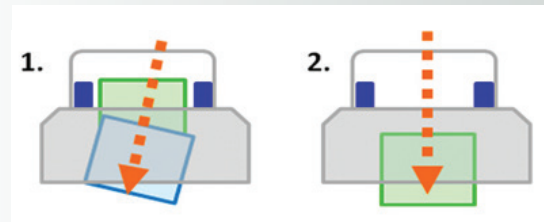


fi-7180 and fi-7160



fi-7280 and fi-7260

Smooth, uninterrupted feeding has been developed to an unmatched level in these 4 models such that in addition to ultrasonic multifeed detection that detects double feeds even within batches of mixed thickness documents and intelligent multifeed detection where predetermined areas can be set to be ignored from triggering false alerts, the fi-7180, fi-7280, fi-7160 and fi-7260 also feature an Intelligent Sonic Paper Protection Function that works by sensing the audible noise of paper being fed and stops paper feeding when an irregular noise is encountered.



Independent pick rollers ensure a skewed document will not affect the alignment of following sheets

Bundled with the fi-7180, fi-7280, fi-7160 and fi-7260 scanners are PaperStream IP* and PaperStream Capture* which are a genuinely developed TWAIN and ISIS scanner driver and capturing software application, designed for enhanced image processing and batch scanning.

The fi-7180 and fi-7160 has an imprinter available as an option that enables documents to be endorsed with up to 40 characters once they have been scanned.

* Please see page 32/33 for further information



fi-5530C2

The fi-5530C2 is the smallest scanner in its class to offer an A3 (or A4 landscape) ADF which can hold up to 100 sheets (A4, 80 g/m²). It can process mixed batches with document sizes from A8 to A3. Its space saving design ensures that the scanner can be placed in even the smallest of desk areas and its output tray can be folded away when not in use.



The scanner displays remarkably quick scanning speeds at up to 600 dpi resolution, 35 pages per minute can be achieved at 200 dpi in portrait mode and this increases to 50 pages in landscape mode. Duplex scanning is also possible at 70 and 100 ipm respectively.

Designed with the user in mind there are simple to use scan and send buttons that allow for one touch-operation. The potential risk of costly re-scanning and checking is minimized with an in-built ultrasonic double feed detection feature that prevents two or more sheets being fed at the same time. Page rotation and automatic paper size detection is available through the driver whilst auto-cropping and auto-deskew help to enhance the captured image.

An imprinter is available as an option that enables documents to be endorsed with up to 40 characters once they have been scanned.

Bundled with the fi-5530C2 scanner are PaperStream IP* and PaperStream Capture* which are a genuinely developed TWAIN and ISIS scanner driver and capturing software application, designed for enhanced image processing and batch scanning.



fi-6750S

The fi-6750S is a production level A3 scanner that combines a simplex ADF with an A3 flatbed module. It offers impressive scanning at speeds of 72 pages per minute in mono and colour (landscape, A4, at up to 300 dpi) and 55 ppm in A4 portrait at up to 300 dpi. Maximum achievable resolution is 600 dpi in colour, mono or greyscale.



The fi-6750S can effortlessly scan up to 200 sheets of varying weights, quality and sizes and can also scan paper up to 3m long. Paper size ranging from A8 to A3 can be scanned whilst differing in thickness from 31 g/m² up to 209 g/m². A user positionable ADF that can be rotated through a full 180 degrees ensures optimisation of available space is possible as well as suiting right or left handed operators.

Operability is further enhanced through intelligent multifeed detection which whilst ensuring documents are not double fed also ensures false misfeed alerts do not occur by ignoring double layer zones of documents as may be the case when photos or sticky notes are purposely attached. Bound reports, books and fragile documents can be captured using the integrated A3 size flatbed.

The fi-6750S comes with Scanner Central Admin software which allows system administrators to manage installation, monitor scanner running status, update drivers and software from one location dramatically cutting the cost and work associated with setting up, operating and maintaining multiple scanners in an organisation.

Bundled with the fi-6750S scanner are PaperStream IP* and PaperStream Capture* which are a genuinely developed TWAIN and ISIS scanner driver and capturing software application, designed for enhanced image processing and batch scanning.



fi-6670 and fi-6770

Experience exceptional performance with advanced scanning functionalities with these production scanners from Fujitsu. The fi-6670 and fi-6770 help to increase efficiencies in production environments ensuring that capturing of high volumes of documents and multi-tasking is made a whole lot easier.

Scanning at a resolution of 200 dpi (A4 Landscape), up to 180 colour or mono images per minute or 90 pages per minute can be scanned through the 200 sheet ADF which comes as standard on both models (fi-6770 also has a built in A3 size flatbed).

fi-6670 in use



At 300 dpi these speeds are 160 ipm and 80 ppm and all models will scan at up to 600 dpi. Scan mixed batches ranging in size from A8 to A3 (even Trapezoid shaped documents can be scanned in their entirety) and thickness from 31 g/m² to 209 g/m².

The fi-6670 and fi-6770 are uniquely designed to take up minimal space whilst remaining user friendly. The fi-6670 is equipped with control panels on both sides of the unit to suit specific spaces as well as the users preferred hand use, additionally it is incredibly compact with a small footprint (641 mm wide by 432 mm deep) and input and output trays that can be adjusted to required and preferred paper guidance.



fi-6670

The ADF of the fi-6770 can be rotated a full 180 degrees to allow for right or left handed feeding as well as being positioned in the best possible setting to suit the space requirements.

Ultrasonic double feed detection comes as standard which whilst watching for double feeds and stopping the scanner instantly also helps eliminate false double feeds which may come about as a result of pages scanned that may have sticky notes or photos attached. Scanned images are further enhanced by a punch hole removal functionality.

fi-6770 in use



fi-6770

Bundled with the fi-6670 and fi-6770 scanners are PaperStream IP* and PaperStream Capture* which are a genuinely developed TWAIN and ISIS scanner driver and capturing software application, designed for enhanced image processing and batch scanning.

The fi-6670 can be optionally utilised with an imprinter that can print pre-defined characters on the back of scanned documents.



fi-6400

The fi-6400 is the ideal enterprise class scanning solution for small and medium sized companies who may be wishing to introduce a centralised document capture solution. Indeed, larger organisations who need added flexibility from their scanning infrastructure could utilise the affordable fi-6400 for applications where decreasing scan requirements are needed across multiple locations, when there is a need for a higher throughput scanner to cover peak times or simply as a back-up system.



Set up and refinements of the fi-6400 are so easy to manage that intentional adjustments of workflow routines can be achieved even on an ad-hoc basis. The fi-6400 can scan at speeds of 100 pages per minute (ppm) or when double sided 200 images per minute (ipm) at 300 dpi in A4 landscape mode (85ppm/170ipm in A4 portrait mode).

Mixed document batches can be managed efficiently when the physical characteristics of documents change within the batch. The fi-6400 handles different sized sheets from A8 to A3 and differences in materials such as when paper, cardboard and plastic vary in weight and thickness – leaving the operator free to attend to parallel tasks or prepare the next batch of documents, without being distracted by misfeed alerts.



The fi-6400 features an impressively small desk-footprint and near-silent operation. The foldaway hopper means that the fi-6400 is suitable for placement in a range of office locations. The scanner helps support environmental policies such as waste management, recycling initiatives and becoming greener through sustainability initiatives.

Time saving, image enhancing features such as Automatic Colour Detection, Automatic Orientation, intelligent and advanced dynamic threshold control for optimised images (iDTC & ADTC) and Multifeed Detection contribute to more efficient document processing day after day.

The fi-6400 comes with Scanner Central Admin software which allows system administrators to manage installation, monitor scanner running status, update drivers and software from the one location dramatically cutting the cost and work associated with setting up, operating and maintaining multiple scanners in an organisation.

Bundled with the fi-6400 scanner are PaperStream IP* and PaperStream Capture* which are a genuinely developed TWAIN and ISIS scanner driver and capturing software application, designed for enhanced image processing and batch scanning.





fi-6800

Embracing a compact, robust and stylish design Fujitsu's production volume fi-6800 scanner is perfect for applications requiring high throughput, high speed and high quality document scanning.



The fi-6800 also offers superb capture reliability and image processing. Impressive scanning speeds help set the fi-6800 apart. At 300 dpi in A4 landscape mode 130 pages per minute can be achieved whether scanning in mono or colour. This is doubled to 260 images per minute in duplex. The ADF hopper can take a maximum 500 sheets.



fi-6800 Scanning



fi-6800 side view

Effortlessly scan mixed batches of documents ranging from A8 to A3 in size as well as differing quality and thickness (20 to 209 g/m²). Additionally the fi-6800 can scan extra long documents at up to 3,048 mm in length.

The fi-6800 has the smallest footprint in its class measuring just 460 mm wide by 430 mm deep. This combined with a foldable input tray and near silent operation make it a perfect companion sitting comfortably and discretely in any environment.

A host of functions help increase efficiencies and productivity including automated patch code or barcode triggered batch separation and file or folder naming. Also post-scan task simplifiers such as the 'Automatic Stacker Adjustment' and 'Automatic Image Quality

Checker', are highly beneficial functionalities introduced with the fi-6800. Paper feed problems are tackled before they happen with functions such as 'Paper Protection' and 'Multifeed Protection'.

Operability is further enhanced through intelligent multifeed detection which whilst ensuring documents are not double fed also ensures false misfeed alerts do not occur by ignoring double layer zones of documents as may be the case when photos or sticky notes are purposely attached.

There is a CGA board option with VRS professional that offers specific image enhancement possibilities in Kofax environments. Optional post printers are available that allow for printing of characters on front or back side of scanned documents.

The fi-6800 comes with Scanner Central Admin software which allows system administrators to manage installation, monitor scanner running status, update drivers and software from the one location dramatically cutting the cost and work associated with setting up, operating and maintaining multiple scanners in an organisation.

Bundled with the fi-6800 scanner are PaperStream IP* and PaperStream Capture* which are a genuinely developed TWAIN and ISIS scanner driver and capturing software application, designed for enhanced image processing and batch scanning.

* Please see page 32/33 for further information



fi-5950

The fi-5950 is a production level scanner built for applications needing to scan high volumes reliably and quickly whilst minimising the pre and post processing tasks of the operator.

The fi-5950 can scan a wide range of paper qualities varying in size from A8 to A3 and thicknesses from 31 to 209 g/m² through the 500-sheet capacity hopper.

The fi-5950 provides selectable processing options through TWAIN or ISIS driver settings, which are supported by UW-SCSI and USB 2.0 interfaces. There is an optional CGA board with VRS Professional that offers specific image enhancement possibilities in Kofax environments.

The overall processing speed is additionally enhanced due to high speed CCD technology. The scanner can scan at resolutions of up to 600 dpi, and at 300 dpi scanning speeds are an impressive 135 pages per minute in simplex and 270 images per minute in duplex in both colour and mono modes (A4 landscape).

The fi-5950 comes equipped with three individual ultrasonic sensors which greatly increase the reliability of double feed detection. This, together with superior paper processing and continuous document protection, ensures that if sticky or stapled documents are included in the batch, the sensors identify an overskew incident and interrupt the scanning process to prevent possible damage to the document.



Available as optional extras are pre- and post imprinters which enable printing of up to 40 characters as an index on the front or back of scanned documents. This additional security may be required in areas such as banking and insurance and can be combined with the driver controlled virtual imprinting function (only works with TWAIN).

An active output stacking tray for neat batches helps prevent paper sheets from curling. The fi-5950 emits incredibly low noise during operation at less than 55 dB. It features easy access to all consumables and paper path areas. When not in use the hopper module can be closed ensuring minimal desktop space is used as well as keeping the interior of the scanner free from dust.

Bundled with the fi-5950 scanner are PaperStream IP* and PaperStream Capture* which are a genuinely developed TWAIN and ISIS scanner driver and capturing software application, designed for enhanced image processing and batch scanning.

fi-65F

The fi-65F is a small format flatbed only scanner that offers the potential and flexibility of scanning up to A6 sized colour or black and white documents in environments where space is at a premium such as receptions of businesses, the leisure industry, financial institutions and government departments.



Scan identification cards, passports, prescriptions or driving licenses with just a press of the scan button and instantly create digitised files, a colour A6 document can be scanned in just under 2 seconds and a black and white document in just 1 second.

Scanning can be done with or without the cover further enhancing the user convenience and reducing any waiting times when utilised in customer facing applications. Documents can be automatically scanned, deskewed and cropped to their actual size in less than 2 seconds including preparation regardless of how they are put on the flatbed.

The fi-65F can be powered either by AC mains power or if access to power is limited it can be additionally powered via USB with very little impact on scanning speeds and processing times.

Bundled with the fi-65F scanner are PaperStream IP* and PaperStream Capture* which are a genuinely developed TWAIN and ISIS scanner driver and capturing software application, designed for enhanced image processing and batch scanning.

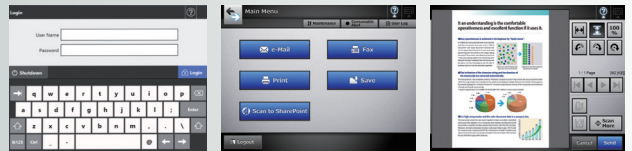


N7100

The N7100 network scanner helps maximise business efficiency by allowing every staff member to speedily digitise everyday documents and facilitate the use and transmission of paperwork all around the company.



The N7100 comes equipped with an 8.4" high resolution touchscreen and integrated on screen keyboard. Based on login credentials a variety of standardised scanning sequences as well as individually customised 'Job Menus' can be set up and geared around the requirements of an individual user, a user group or a complete department.



Login screen

Main Menu screen

Preview screen (Scan viewer)

This customisation can help establish an instant and secure control of any scanning settings and destinations to which information should be routed such as to a network folder, email address, FTP server or collaboration platform.

The N7100 comes equipped with a powerful CPU and GI processor that work in combination with embedded PaperStream IP image enhancement technology and facilitate a near-instant view of resulting scans. Highly reliable and advanced paper feeding mechanisms help support the scanning of a wide variety of everyday documents.

The N7100 is a highly secure device befitting of its shared nature and is armed with a host of advanced security features such as login authentication, encryption, secure initialise and scanned data deletion.

An SDK is available for the N7100 to develop applications and further expand the functions of the device to meet your business needs. The N7100 offers centralised administration and job functions allowing for configuration and monitoring of many units from the one location.

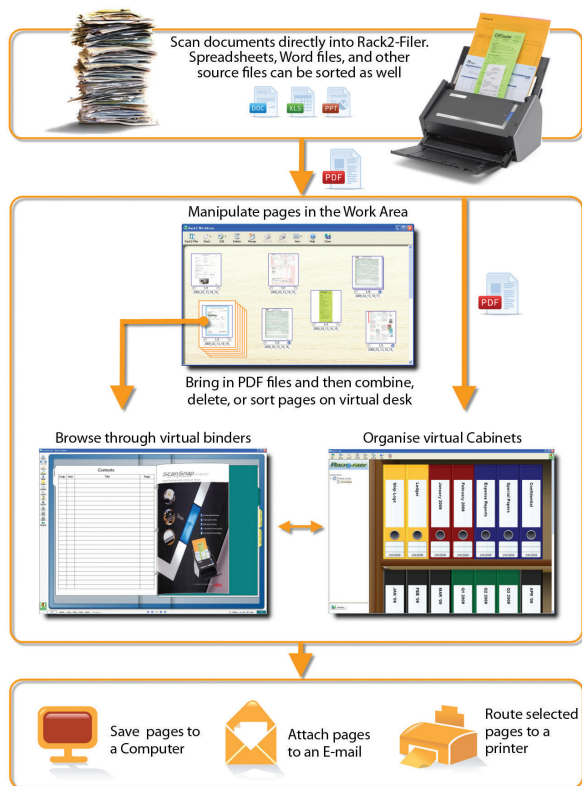
Rack2-Filer Smart (Windows Only)

Developer and Integrator Program

Rack2-Filer Smart Rack2-Filer Smart is a feature rich scanning and digital data organising application incorporating an ultra-intuitive user interface that gives users the benefits of what they love best about the paper world while harnessing the power and sophistication they depend upon within the electronic realm.

With Rack2-Filer Smart and your Fujitsu ScanSnap scanner, you can easily scan, edit, distribute, access anywhere and organise all of your digitised documents (not only limited to newly created files).

Rack2-Filer Smart is bundled with the S1300i Deluxe, the iX500 Deluxe and the SV600 as well as it can be purchased separately.

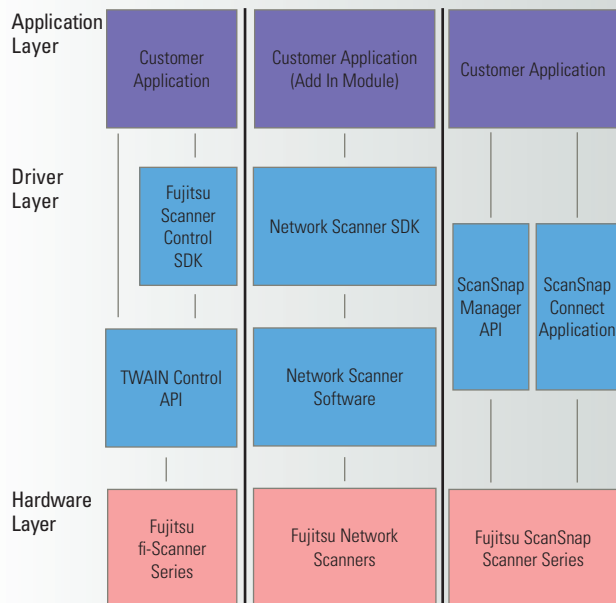


Recognising the need for sharing best practice, knowledge and experience, PFU (EMEA) Limited have introduced the Developer & Integrator Program which involves us working with your development team to create a tailored document scanning solution for your customers.

The Developer and Integrator program allows us to work closer with you and your applications offering you and your customers a better all round service.

We can explore and integrate PFU technologies including Network scanner SDK, Scanner control SDK (TWAIN), ScanSnap integration, TWAIN API control and Scanner Central Administration software offering prototype development and scanner interface support.

Please contact us with any questions or opportunities at sdk@fdg.fujitsu.com



PaperStream

Fujitsu developed best in class scanner driver
and image capturing / processing software



PaperStream IP – high quality image enhancement

PaperStream IP is the new scanner driver for the fi-6110, fi-7180, fi-7280, fi-7160, fi-7260, fi-5530C2, fi-6750S, fi-6670, fi-6770, fi-6400, fi-6800, fi-5950 and fi-65F scanners. In addition to being fully compliant with the industry standard TWAIN and ISIS interface, PaperStream IP incorporates as standard, highly sophisticated image processing that automatically applies features such as noise removal, background pattern removal and character augmentation to produce exceptionally clear, high quality images that are suitable for direct import into the users' workflow.

PaperStream IP has an intuitive, easy to use interface that can be switched between Administrator or User mode to simplify the scanning process and reduce user error.

Additionally PaperStream IP also introduces a new Assisted Scanning mode, which allows the user to visually select the best quality image from a range of images of the page, rather than needing to manually fine tune the scanning parameters one by one.



PaperStream Capture – enhanced capture

PaperStream Capture is an easy to use capture tool which allows users to easily create scanning routines which encapsulate all of the settings and configuration required to control the scanning process from scan to the release of the image to the users' or companies' defined workflow.

Once created, profiles can be run by a single click and the most frequently used profiles can even be linked to the scanners front panel scan button to streamline the whole capture process.

Assurance Program



All Services Operate Monday - Friday, 09:00 am – 17:00 pm local time.

WHAT IS THE ASSURANCE PROGRAMME?

The Assurance Program from Fujitsu offers a wide range of Service Plans to enhance the Product Warranty included with Fujitsu document scanners. As the manufacturers official program, you can be confident in the investment made by Fujitsu to ensure the highest standards of support you would expect from one of the leading global IT companies.

Certain limitations may apply depending on geographic location, please visit <http://emea.fujitsu.com/assurance> for further information.

PROTECT YOUR INVESTMENT

With the growing demand for document imaging solutions and an increase in business dependency on scanning and managing documents electronically, the Assurance Program provides the peace of mind and business continuity that customers demand, allowing you to focus on your business while we focus on your scanner.

All services can be purchased from your scanner supplier using specific Fujitsu service part numbers.

	Product Warranty	Bronze	Silver	Gold	Platinum
Personal Scanners					
ScanSnap S1300i					
Telephone Hotline Support	–		•		
Online Support Ticketing System	•		•		
Remote Desktop Support	–		•		
Advance Exchange Product Replacement:	Within 7 Days		Within 1-2 Days		
Spare Parts, Labour & Shipping Included (Excluding Consumables)	•		•		
Accidental Damage Cover	–		•		
Available for	2 Years		4 Years		
ScanSnap S1100i, ScanSnap iX100, ScanSnap iX500 and ScanSnap SV600				S1100i, iX100, iX500 and SV600	iX500 only
Telephone Hotline Support	•		•		•
Online Support Ticketing System	•		•		•
Remote Desktop Support	•		•		•
Advance Exchange Product Replacement - S1100i and iX100:	Within 7 Days		Within 1-2 Days		N/A
Advance Exchange Product Replacement - iX500 and SV600:	Within 1-2 Days		Within 1-2 Days		Within 1 -2 Days
Customers Original Unit Returned After Repair (Exchange PLUS)	•		•		•
Spare Parts, Labour & Shipping Included (Excluding Consumables)	•		•		•
Accidental Damage Cover	•		•		•
ScanSnap iX500 available for:	2 Years		5 Years		5 Years
ScanSnap S1100i, iX100 and SV600 available for:	1 Year		3 Years		N/A
Specialist Products					
fi-65F					
Telephone Hotline Support	•	•			
Online Support Ticketing System	•	•			
Advance Exchange Product Replacement:	Within 1-2 Days	Within 1-2 Days			
Spare Parts, Labour & Shipping Included	•	•			
Available for (in years):	1 Year	3 Years			
Renewals Available For:	•	1 Year			

Reducing Consumable Costs

Abbreviations & Terminology:

Advance Exchange = Replacement of the faulty scanner with a new or as new unit.

Advance Exchange PLUS = Double Exchange, original product is returned after repair.

Onsite Service = A visit by a technician with a spare parts kit to repair the product at your premises.

PM = Preventative Maintenance, A scheduled visit by a technician to disassemble, clean, lubricate, recalibrate, reassemble and test.

ADC = Accidental Damage Cover

NBD = Next Business Day

8hr Response = A visit by a technician with spare parts within 8 working hours of the fault report.

FW = Firmware

HW = Hardware

FW+HW = Firmware + Hardware

8 + 8 = 8 Hour response and 8 Hour fix

Assurance Program



All Services Operate Monday - Friday, 09:00 am – 17:00 pm local time.

	Product Warranty	Bronze	Silver	Gold	Platinum
Workgroup, Departmental and Network Scanners					
fi-6110, fi-7160, fi-7260, fi-7180, fi-7280, fi-5530C2 and N7100					
Telephone Hotline Support	•	•	•	•	•
Online Support Ticketing System	•	•	•	•	•
Remote Desktop Support	–	•	•	•	•
Advance Exchange Product Replacement within:	1-2 Days	1-2 Days	1-2 Days	–	–
Customers Original Unit Returned After Repair (Exchange PLUS)	–	–	•	–	–
Visit By Engineer Carrying Spare Parts Kit: Response/Fix within:	–	–	–	8 Hours	8 + 8
Repairs Carried Out Onsite	–	–	–	•	•
Spare Parts, Labour & Shipping or Travel Included (Excluding Consumables)	•	•	•	•	•
Temporary Contingency Equipment if Repair not Possible	–	–	–	–	•
Accidental Damage Cover	–	–	–	–	•
Available for:	1 Year	2-5 Years	1-5 Years	1-5 Years	1-5 Years
Renewals Available For:	–	1-2 Years	1-2 Years	1-2 Years	1-2 Years
Low-Volume Production Scanners					
fi-6750S, fi-6670 and fi-6770					
Telephone Hotline Support	•	•	•	•	•
Online Support Ticketing System	•	•	•	•	•
Remote Desktop Support	–	–	•	•	•
Visit By Engineer + Spare Parts Kit: Response/Fix within:	NBD	NBD	8+8	8+8	8+8
Repairs Carried Out Onsite	•	•	•	•	•
Spare Parts, Labour & Travel Included (Excluding Consumables)	•	•	•	•	•
Temporary Contingency Equipment if Repair not Possible	–	–	•	•	•
Preventative Maintenance Visits per year:	–	–	–	1x PM / Year	2x PM / Year
Accidental Damage Cover	–	–	–	–	•
Available for (in years):	1 Year	2-5 Years	1-5 Years	1-5 Years	1-5 Years
Renewals Available For:	–	1-2 Years	1-2 Years	1-2 Years	1-2 Years
Mid-Volume Production Scanners					
fi-6400, fi-6800 and fi-5950					
Telephone Hotline Support	•	•	•	•	•
Online Support Ticketing System	•	•	•	•	•
Remote Interactive Support	–	–	•	•	•
Visit By Engineer Carrying Spare Parts Kit: Response / Fix within:	NBD	NBD	8+8	8+8	8+8
Repairs Carried Out Onsite	•	•	•	•	•
Spare Parts, Labour & Travel Included (Excluding Consumables)	•	•	•	•	•
Temporary Contingency Equipment if Repair not Possible	–	–	•	•	•
Preventative Maintenance Visits per year:	1x PM / Year	1x PM / Year	1x PM / Year	2x PM / Year	3x PM / Year
Periodic Product Upgrades (Performed during PM Visits)	–	FW	FW	FW+HW	FW+HW
Accidental Damage Cover	–	–	–	–	•
Available for (in years):	1 Year	2-5 Years	1-5 Years	1-5 Years	1-5 Years
Renewals Available For:	–	1-2 Years	1-2 Years	1-2 Years	1-2 Years

Abbreviations & Terminology:

Advance Exchange = Replacement of the faulty scanner with a new or as new unit.

Advance Exchange PLUS = Double Exchange, original product is returned after repair.

Onsite Service = A visit by a technician with a spare parts kit to repair the product at your premises.

PM = Preventative Maintenance, A scheduled visit by a technician to disassemble, clean, lubricate, recalibrate, reassemble and test.

ADC = Accidental Damage Cover

NBD = Next Business Day

8Hr Response = A visit by a technician with spare parts within 8 working hours of the fault report.

FW = Firmware

HW = Hardware

FW+HW = Firmware + Hardware

8 + 8 = 8 Hour response and 8 Hour fix

For further information visit <http://emea.fujitsu.com/assurance>

Scanner Care: Consumables and Cleaning Kits

To keep your Fujitsu scanner working at its optimum, it is vital that a simple cleaning regime is in place. Using these PFU approved cleaning kits will ensure that things are kept running smoothly without disruption to scanning operation.

In addition, it will minimise scanning downtime to keep a consumable kit on hand, ready to replace worn rollers and pads.

Cleaning Kit	Contents	Expected Life	Order Number
ScanSnap Cleaning Kit for S1100, S1100i, iX100, S300, S300M, S1300, S1300i, fi-5110EOX, fi-5110EOX2, fi-5110EOXM, S500, S500M, S510, S510M, S1500, S1500M, iX500, SV600, fi-5110C, fi-6110	24 x F1 Fluid Impregnated Wipes, Instructions	24 Applications	SC-CLE-SS
Workgroup & Departmental Scanner Cleaning Kit for fi-5015C, fi-4120C, fi-4220C, fi-4120C2, fi-4220C2, fi-5120C, fi-5220C, fi-6130, fi-6230, fi-6140, fi-6240, fi-6130Z, fi-6230Z, fi-6140Z, fi-6240Z, fi-7160, fi-7260, fi-7180, fi-7280, fi-4530C, fi-5530C, fi-5530C2, fi-4340C, fi-6000NS, fi-6010N, N7100, N1800	72 x F1 Fluid Impregnated Wipes, Instructions	3 months @ 1 Application Per day, 1 month @ 3 Applications Per day	SC-CLE-WGD
Low Volume Scanner Cleaning Kit for M4097D, fi-4640S, fi-4750C, fi-4750L, fi-5650C, fi-5750C, fi-5950, fi-6750S, fi-6670, fi-6670A, fi-6770, fi-6770A, fi-6400, fi-6800	1 x Bottle F1 Fluid, 75 x Lint Free Cleaning Cloths, Instructions	3 months @ 1 Application Per day, 1 month @ 3 Applications Per day	SC-CLE-LV
High Volume Scanner Cleaning Kit for M4099D, fi-4990C, fi-4860C, fi-4860C2, fi-5900C	1 x Bottle F1 Fluid, 1 x Bottle F2 Fluid, 75 x Lint Free Cleaning Cloths, Instructions	3 months @ 1 Application Per day, 1 month @ 3 Applications Per day	SC-CLE-HV

Consumable Kit	Contents	Expected Life	Order Number
Consumable Kit for ScanSnap S300, S300M, S1300, S1300i	1 x Pick Roller, 2 x Pad Assembly	Up to 100k Scans	CON-3541-010A
Consumable Kit for ScanSnap iX500	1 x Pick Roller, 1 x Brake Roller	Up to 200k Scans	CON-3656-001A
Consumable Kit for ScanSnap S1500, S1500M, N1800, fi-6110	1 x Pick Roller, 2 x Pad Assembly	Up to 100k Scans	CON-3586-013A
Consumable Kit for N7100	1 x Pick Roller, 1 x Brake Roller	Up to 200k Scans	CON-3706-001A
Consumable Kit for ScanSnap fi-5110EOX, fi-5110EOX2, fi-5110EOXM, S500, S500M, S510, S510M, fi-5110C	1 x Pick Roller, 2 x Pad Assembly	Up to 100k Scans	CON-3360-001A
Consumable Kit for fi-5015C	1 x Pick Roller, 5 x Pad Assembly	Up to 100k Scans	CON-3209-009A
Consumable Kit for fi-4120C, fi-4220C	2 x Pick Roller, 4 x Pad Assembly	Up to 200k Scans	CON-3289-017A
Consumable Kit for fi-4120C2, fi-5120C, fi-4220C2, fi-5220C, fi-6010N, fi-6000NS	2 x Pick Roller, 4 x Pad Assembly	Up to 200k Scans	CON-3289-003A
Consumable Kit for fi-6130, fi-6230, fi-6140, fi-6240, fi-6130Z, fi-6230Z, fi-6140Z, fi-6240Z	2 x Pick Roller, 2 x Brake Roller	Up to 400k Scans	CON-3540-011A
Consumable Kit for fi-7160, fi-7260, fi-7180, fi-7280	2 x Pick Roller, 2 x Brake Roller	Up to 400k Scans	CON-3670-002A
Consumable Kit for fi-5530C, fi-5530C2	2 x Pick Roller, 4 x Pad Assembly	Up to 400k Scans	CON-3334-004A
Consumable Kit for fi-4340C	2 x Pick Roller, 4 x Pad Assembly	Up to 400k Scans	CON-3277-005A
Consumable Kit for fi-5650C, fi-5750C	2 x Pick Roller, 2 x Brake Roller	Up to 500k Scans	CON-3338-008A
Consumable Kit for fi-6670, fi-6670A, fi-6770, fi-6770A, fi-6750S	2 x Pick Roller, 2 x Brake Roller	Up to 500k Scans	CON-3576-012A
Consumable Kit for fi-4860C, fi-4860C2	2 x Pick Roller, 2 x Brake Roller, 2 x Separation Pad	Up to 600k Scans	CON-4315-007A
Consumable Kit for fi-5900C, fi-5950 – 2 Pack	2 x Pick Roller, 2 x Brake Roller, 2 x Separation Pad, 2 x Separation Roller	Up to 1.2m Scans	CON-3450-002A
Consumable Kit for fi-5900C, fi-5950 – 6 Pack	6 x Pick Roller, 6 x Brake Roller, 6 x Separation Pad, 6 x Separation Roller	Up to 3.6m Scans	CON-3450-006A
Consumable Kit for M4099D, fi-4990C	1 x Pick Roller Assembly, 1 x Brake Roller, 1 x Separation Pad	Up to 300k Scans	CON-4315-014A
Consumable Kit for fi-4750L	1 x Pick Roller, 2 x Pad Assembly	Up to 200k Scans	CON-3951-015A
Consumable Kit for M4097D, fi-4640S, fi-4750C	1 x Pick Roller, 2 x Pad Assembly	Up to 200k Scans	CON-3951-016A
Consumable Kit for fi-6400, fi-6800	1 x Pick Roller, 1 x Brake Roller, 1 x Separation Roller	Up to 600k Scans	CON-3575-001A
Consumable Kit for fi-6400, fi-6800 – 2 Pack	2 x Pick Roller, 2 x Brake Roller, 2 x Separation Roller	Up to 1.2m Scans	CON-3575-002A
Consumable Kit for fi-6400, fi-6800 – 10 Pack	10 x Pick Roller, 10 x Brake Roller, 10 x Separation Roller	Up to 6m Scans	CON-3575-010A

ISV Partner Programme and Independent Software Vendor Collaboration Centre (ICC)

What is the ICC?

PFU have initiated the ISV Partner Programme to further support the development of document related solutions throughout Europe's business environments.

This programme is set to make the benefits of document management solutions transparent for business users, who are looking into first time installations as well as expansion or migration of existing solutions. Furthermore, the ISV Partner Programme makes it easy for ISVs to integrate document capture hardware efficiently and reliably into their solutions. New software versions can be tested prior to their release, assuring business users of their functional capabilities and flawless interoperability with Fujitsu's document scanners.

Fujitsu acknowledges that Enterprise Content Management (ECM) is a vital process for an organisation to provide a market and society with valuable information, products and services. It is a crucial step for a company to implement a proper ECM, utilising various infrastructures and tools in the ever-evolving IT technology arena.

PFU is proud to offer an unequalled gateway to Europe and its enterprise customers – supporting the strive to expand and exploit business opportunities for:

- Document Related Technologies (DRT)
- Document Management & Archiving (DMA)
- Enterprise Content Management (ECM)
- Electronic Document & Records Management (EDRM)
- Information Management
- Forms Processing
- Workflow Processing
- Industrial Collaboration

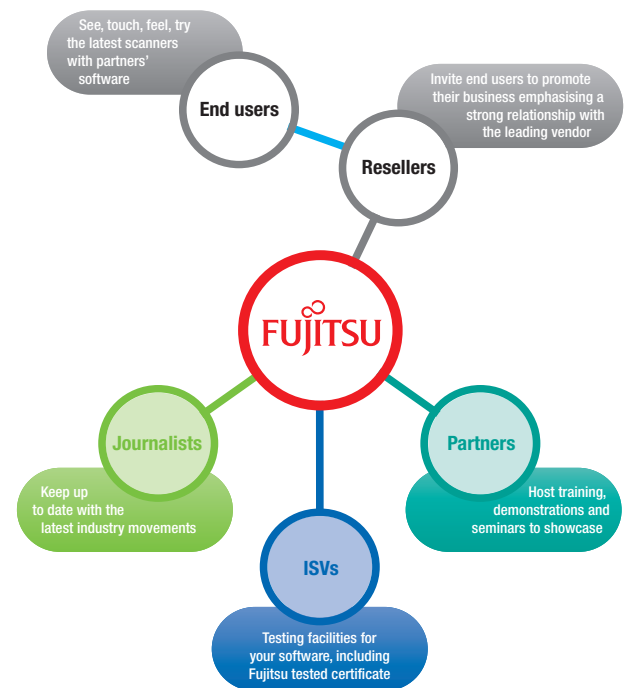
The ISV Partner Programme is one building block to standardise the process of implementation and to provide confidence in making the right choice. As an integral part of this offering, PFU hosts the ICC that is open to the public on request.

The Fujitsu ICC is set up to be the primary point of information and assistance for seeing, understanding, testing and experiencing complete document related solutions.

Located in London, ISVs, VARs, SIs, partners and enterprise users from all over Europe now have a unique location within comfortable reach where they can actually put their hands on what would otherwise be intangible – their future solution.

- Check that your latest software works with Fujitsu scanners
- Share the value of your Document Management Solution with your customers
- Discover why you need ECM to expand your corporate value

To become an active member of the ISV partner community, simply contact PFU and learn more about the programme. We will then coordinate deployment of your solution into the ICC and discuss further possibilities of collaboration and support.



The Imaging Channel Program

To Register or find out more information
www.imaging-channel-program.com

The Imaging Channel Program has been designed to deliver real value to our community of imaging distributors, solution partners, resellers and end customers.

By creating a collaborative environment where participation and interaction within the community is encouraged, new business opportunities are generated and leveraged by each channel member in more EMEA regions, more vertical markets and more end customer applications.

The program provides you, our Imaging Channel Partner with a reliable and open platform to achieve profitable growth by sharing expertise and experience in a co-operative atmosphere and helps end customers identify you as the most knowledgeable and competent partner for their document management projects and investments.

Most importantly, as a PFU Imaging Partner you have the opportunity to grow your business in new verticals, new applications, new regions, provide best-in-class imaging products and compete more effectively in today's marketplace.

IN PARTICULAR THE PROGRAM OFFERS YOU THE OPPORTUNITY FOR:

- **More profitable business**
From increased sales opportunities and a range of benefits and incentive programs to reduce your cost of sales
- **Close Co-operation**
With a supplier who is 100% committed to the channel. Our success is dependent upon yours, so your best interests are at the heart of our partnership
- **Increased Customer Satisfaction**
Through easily identifiable, proven expertise and enhanced confidence in Fujitsu Imaging products
- **Enhanced skills**
Via exclusive access to expert knowledge and valuable resources, enabling the delivery of Fujitsu imaging products to end customers

PROGRAM BENEFITS

Depending on your certification level you can get access to a list of exclusive benefits:

- **Rebate Programs**
We offer tiered rebates to channel partners based on the attainment of certain revenue goals
- **Lead Generation Programs**
Access to pre-qualified Sales Leads generated by PFU
- **Co-marketing support**
A Market Development Funds budget is available to assist our Imaging Partners in building a strong sales pipeline
- **Sales Incentive**
We purposefully design incentives that are attainable and lucrative for our resellers
- **Project Registration and Pricing**
Registering your major projects you get the possibility to improve your margins on specific end-user opportunities and enhanced probability to win the deal
- **Sales and Technical Support**
Partners have a dedicated PFU Partner Manager to help build their business, and the support of our Channel Marketing and Technical Sales teams
- **Demonstration and Evaluation Units**
Demonstration units are provided at a discount to resellers and enablers
- **Partner Advisory Forum and Partner Conferences**
Our partner advisory forums and partner conferences are key venues to propose and evaluate new products, openly discuss market strategies and tactics, and discuss ideas to build a stronger partnership with you
- **Exclusive use of PFU Collaboration Centre**
Take advantage of our state-of-the art technology facility where you can showcase your solutions, attend Industry seminars, invite your customers and generate more business by collaborating with other Fujitsu Imaging Community members



SPECIFICATIONS

			S1100i	iX100	S1300i	iX500	SV600	fi-6110	fi-7160	fi-7260	fi-7180	fi-7280	fi-5530C2	fi-6750S	fi-6670	fi-6770	fi-6400	fi-6800	fi-5950	fi-65F	N7100
Scanning speed	Simplex (mono)	Speed at 200 dpi, DIN A4, portrait (ppm)	8 sec/page ³	5 sec/page ³	12 ^{3,7}	25 ⁴	3 sec/page ¹¹	20 ³	60 ³	60 ³	80 ³	80 ³	35	55 ³	70	70	85 ³	100 ³	105 ³	1 Sec. ²	25 ³
	Simplex (colour)	Speed at 200 dpi, DIN A4, portrait (ppm)	8 sec/page ³	5 sec/page ³	9 ⁷	25 ³	3 sec/page ¹²	20 ³	60 ³	60 ³	80 ³	80 ³	35	55 ³	70	70	85 ³	100 ³	105 ³	1.7 Secs	25 ³
Duplex scanning	Duplex (mono)	Speed at 200 dpi, DIN A4, portrait (ipm)			24 ^{3,7}	50 ⁴		40 ³	120 ³	120 ³	160 ³	160 ³	70		140	140	170 ³	200 ³	210 ³		50 ³
	Duplex (colour)	Speed at 200 dpi, DIN A4, portrait (ipm)			18 ⁷	50 ³		40 ³	120 ³	120 ³	160 ³	160 ³	70		140	140	170 ³	200 ³	210 ³		50 ³
Document feeding mode	Automatic Document Feeder (ADF) Flatbed		• ¹⁰	• ¹⁰	•	•	•	•	•	•	•	•	•	•	•	•	•	•	•	•	•
ADF capacity			1	1	10	50		50	80	80	80	80	100	200	200	200	500	500	500		50
Interface (see description inside)			USB 2.0	USB 2.0	USB 2.0	USB 3.0	USB 2.0	USB 2.0	USB 3.0	USB 3.0	USB 3.0	USB 3.0	USB 2.0	USB 2.0	USB 2.0	USB 2.0	USB 2.0	USB 2.0	USB 2.0	USB 2.0	RJ-45
													SCSI-2		UW-SCSI	UW-SCSI		SCSI-2	TP-IF		
Ultrasonic double feed detection feature						•		•	•	•	•	•	•	•	•	•	•	•	•	•	•
Light source	White lamp		LED RGB	LED RGB	LED RGB	LED RGB	White LED x 2	•	White LED x 2	White LED x 3	White LED x 2	White LED x 3	•	•	•	•	•	•	•	•	LED RGB
Dropout colour red, green, blue selectable								•	•	•	•	•	•	•	•	•	•	•	•	•	•
Digital colour dropout function / Multistreaming / Blank Page Detection								•	•	•	•	•	•	•	•	•	•	•	•	•	•
Document size	Min.	DIN format	A8	A8	A8	A8	A9	A8	A8	A8	A8	A8	A8	A8	A8	A8	A8	A8	A8	A8	A8
	mm		25.4 x 25.4	25.4 x 25.4	50.8 x 50.8	50.8 x 50.8	25.4 x 25.4	52 x 74	52 x 74	52 x 74	52 x 74	52 x 74	52 x 74	52 x 74	52 x 74	52 x 74	52 x 74	52 x 74	52 x 74	52 x 74	50.8 x 50.8
	Max.	DIN format	A4 ¹	A4 ¹	A4	A4 ¹	A3	A4 ¹	A4 ¹	A4 ¹	A4 ¹	A4 ¹	A3	A3	A3	A3	A3	A3	A3	A3	A4
	mm		210 x 297	210 x 297	210 x 297	210 x 297	297 x 420	210 x 297	210 x 297	210 x 297	210 x 297	210 x 297	297 x 420	297 x 420	297 x 420	297 x 420	297 x 420	297 x 420	297 x 420	297 x 420	210 x 297
Optical resolution (dpi)	Flatbed	DIN format								A4		A4									A6
	ADF/FB (where applicable)		600	600	600	600		600	600	600	600	600	600	600	600	600	600	600	600	600	600
Standard equipment	Operator panel							•	•	•	•	•	•	•	•	•	•	•	•	•	•
	Document background selectable for ADF (white / black)							•	•	•	•	•	•	•	•	•	•	•	•	•	Black
	Paper counter		•	•	•	•		•	•	•	•	•	•	•	•	•	•	•	•	•	•
	ScanSnap mode							•	•	•	•	•	•	•	•	•	•	•	•	•	•
Standard image processing functions	Centralised administration							•	•	•	•	•	•	•	•	•	•	•	•	•	•
	Deskew and Autocropping		•	•	•	•	•	•	•	•	•	•	•	•	•	•	•	•	•	•	•
	Special halftone pattern "Error Diffusion"							•	•	•	•	•	•	•	•	•	•	•	•	•	•
	JPEG Data compression		•	•	•	•	•	•	•	•	•	•	•	•	•	•	•	•	•	•	•
	Image emphasis							•	•	•	•	•	•	•	•	•	•	•	•	•	•
Standard software bundles	Image memory							16 MB	512 MB	512 MB	512 MB	512 MB	64 MB	384 MB	768 MB	768 MB	1 GB	1 GB	1 GB		16 MB
	PaperStream IP and PaperStream Capture (TWAIN / ISIS)							•	•	•	•	•	•	•	•	•	•	•	•	•	•
	ScanSnap Manager		•	•	•	•	•														
	ScanSnap Manager for fi Series							•	•	•	•	•									
	Adobe® Acrobat® Standard																				• ⁸
	ABBYY® FineReader for ScanSnap		•	•	•	•	•														
	CardMinder		•	•	• ⁹	•	•														
Options	Pre-/Post-Imprinter								Post		Post		Post		Post		Post-Front/Back	Post-Front/Back	Pre/Post		
Recommended paper weight (g/m ²)			52-209	52-209	64-107	40-209	0mm-30mm	52-127	27-413	27-413	27-413	27-413	52-127	31-209	31-209	31-209	20-209	20-209	31-209		40-209
Power consumption	220 V - 240 V ± 10% 50/60 Hz (VA)		<2.5 ⁶	<2.2 ^{6a}	<9	<20	<20	<28	<38	<41	<42	<43	<57	<130	<130	<130	<200	<200	<250	<8	<38
ENERGY STAR® / Power consumption in energy save mode			• / <1	• / <0.5	• / <2.6	• / <1.6	• / <2.6	• / <5.4	• / <1.8	• / <1.8	• / <1.8	• / <1.8	• / <5.5	• / <3	• / <3	• / <3	• / <3.2	• / <3.2	• / <3.2	• / <2	• / <0.5
Noise level (dBA)	Sound Pressure Level		<50	<50	<50	<50	<50	<50	<50	<50	<50	<50	<50	<53	<53	<53	<55	<55	<55	<45	<50
	Sound Power Level		<6.2	<6.2	<6.2	<6.5	<6.5	<6.5	<6.2	<6.2	<6.2	<6.2	<6.5	<7.0	<7.0	<7.0	<7.5	<7.5	<7.5	<6.0	<6.5
Weight (kg)			350g	400g	1.4	3	3	3	4.2	8.8	4.2	8.8	8.5	35	17	35	32	32	50	0.9	6
Dimensions	Height (mm)		34	36	77	168	383	130	163	234	163	234	193	342	300	342	345	345	500	40	172
	Width (mm)		273	273	284	292	210	292	300	300	300	300	399	690	641	690	460	460	540	145	300
	Depth (mm)		47.5	47.5	99	159	156	143	170	577	170	577	225	500	432	500	430	430	540	234	232

¹ A3 Scanning possible with use of bundled carrier sheet.
² This scanning speed is doubled when the unit is being operated by bus-power.
³ Seconds per A4 Portrait page at 300 dpi.
⁴ at 600 dpi.
⁵ For fi Series scanners, the maximum referenced value represents a peak volume to which the respective scanner is specified. In case this peak volume is used as regular daily volume, the scanners MTFB will be reduced. For ScanSnap this volume can be doubled.

⁶ Powered from USB.
^{6a} Powered from internal battery.
⁷ Scanning speed when powered by USB is a third of this figure.
⁸ Windows users only.
⁹ Cardiris for Mac.

¹⁰ Manual feed only.
¹¹ 3 Seconds per A3 Landscape page at 1,200 dpi.
¹² 3 Seconds per A3 Landscape page at 600 dpi.

© PFU (EMEA) Limited. 05/15.
 All names, manufacturer names, brand and product designations are subject to special trademark rights and are manufacturer's trademarks and/or registered brands of their respective owners. All indications are non-binding. Technical data is subject to change without prior notification. Product specifications are subject to change without prior notice due to product modification.

