
For Customers Using Windows for Network Connections

When using a different operating system or architecture for the server and client, the connection may not work properly using the procedures described in the Printer Software section of the manual. Please set up the connection according to the procedures shown below.

Setting Up a Shared Printer

Server Settings

Please refer to the manual for the appropriate printer.

[Printer Software] – [Setting Up Your Printer on a Network] –
[Setting the printer server]

Client Settings

Note:

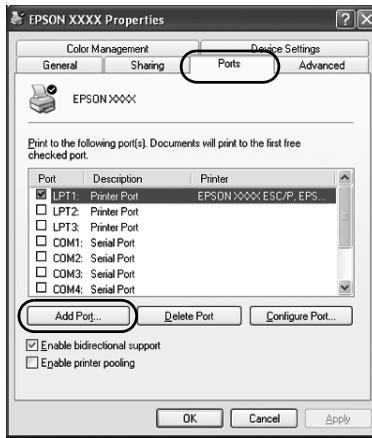
If the printer drivers are not already installed on the client, please install them before performing these settings.

Windows NT4.0/2000/XP/Vista

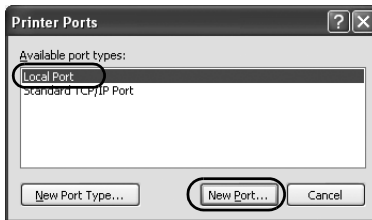
1. On the Windows Start menu, open the Printers or Printers and Faxes folder.
 - Windows Vista
Click Start, click Control Panel, and then click Printers.
 - Windows NT4.0/2000
Click Start, click Settings, and then click Printers.
 - Windows XP Professional
Click Start and then click Printers and Faxes.
 - Windows XP Home Edition
Click Start, click Control Panel, and then click Printers and Faxes.
2. Right-click the icon for the printer you wish to change the settings for, and then click Properties.



3. Click the Ports tab and then click Add Port.

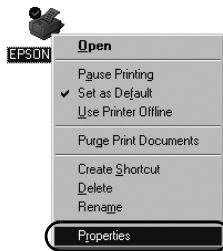


4. When the Printer Ports window appears, select Local Port, and then click New Port.

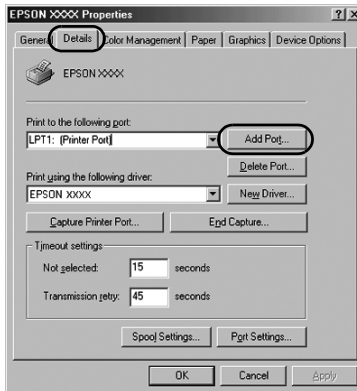


Windows 95/98/Me

1. On the Windows Start menu, click Settings and then click Printers.
2. Right-click the icon for the printer you wish to change the settings for, and then click Properties.



3. Click the Details tab and then click Add Port.



5. Check that the port name you added is selected for Print to the following port, and then click OK.

Important:

When using the same operating systems or architectures for servers and clients, the connection can be set up according to the procedures described in the manual.

*[Printer Software] – [Setting Up Your Printer on a Network] –
[Setting the clients]*

Problems and Solutions

Network problems

A communication error occurs	
Cause	What to do
Are multiple users are logged into a single computer at the same time?	<p>On a Windows XP (64 bit)/Vista (32 bit/64 bit) system with multiple users, a communication error may occur when switching to a new user and starting a new print job while the previous user is still printing.</p> <p>Make sure that the print job for the first user is complete and that user is logged off before switching to a new user and starting a new print job.</p>
You are unable to monitor the shared printer using EPSON Status Monitor 3	
Cause	What to do
Are you using a Windows XP (64-bit)/Vista (32-bit/64-bit) print server with a client set up for an operating system (Windows 95/98/Me/NT4.0/2000) which is older than Windows XP (32-bit)?	<p>When using an operating environment with this combination, the error window for EPSON Status Monitor 3 may not pop up on the client when an error occurs.</p> <p>Please keep EPSON Status Monitor 3 running when using the printer.</p>