

# ALTUSCN™

Enterprise Solutions by ATEN

## KM0832 Matrix KVM Switch Quick Start Guide

© Copyright 2011 ATEN International Co., Ltd. www.aten.com  
 Altusen and the Altusen logo are trademarks of ATEN International Co., Ltd.  
 All rights reserved. All other trademarks are the property of their respective owners.  
 This product is RoHS compliant PAPE-1214-K00G Printing Date: 11/2011

Patent No.  
 CN ZL 01124239.6 CN ZL 200420007513.7 FR 0500514 TW 183765 TW M253187 US 7532998  
 CN ZL 02122202.9 CN ZL 200430123744.X GB 2412456 TW D108320 US 6160543 US 7584309  
 CN ZL 200410008850.2 DE 102004017843 JP 3917598 TW 1237762 US 6489854 US 7613884  
 CN ZL 200410031659.0 DE 102004019107 JP 4160235 TW 0433990 US 6909609 US 7640299  
 CN ZL 200410042771.3 DE 102004058233 JP 4456938 TW 1209992 US 7386584  
 CN ZL 200410042772.8 DE 20200409510.4 TW 150098 TW 1276963 US 7415552

All information, documentation, and specifications contained in this media are subject to change without prior notification by the manufacturer. Please visit our website to find the most up to date version.

### Online Registration

International:  
 • <http://support.aten.com>  
 North America:  
 • [http://www.aten-usa.com/product\\_registration](http://www.aten-usa.com/product_registration)

### Technical Phone Support

#### International:

• 886-2-8692-6959

#### China:

• 86-10-5255-0110

#### Japan:

• 81-3-5615-5811

#### Korea:

• 82-2-467-6789

#### North America:

• 1-888-959-ATEN Ext: 4988

#### United Kingdom:

• 44-8-4481-58923



## 1 Package Contents

The complete KM0832 package consists of:

- 1 KM0832 Matrix KVM Switch
- 1 Power Cord
- 1 Rack Mount Kit (Brackets and Philips hex head screws M3 x 8)
- 1 Foot Pad Set (4 pcs.)
- 1 User Instructions

## 2 Requirements

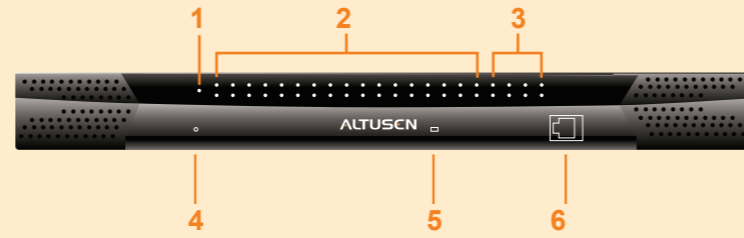
### Console

- A VGA, SVGA, or Multisync monitor capable of the highest resolution that you will be using on any computer in the installation.
- Either a PS/2 or a USB keyboard and mouse.

### Computers

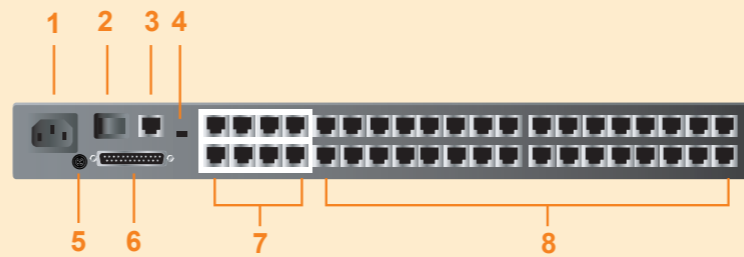
- An HDB-15 video port or, for legacy Sun systems, a Sun 13W3 video port.
- Either a PS/2 style (6 pin mini-DIN) mouse port and PS/2 style keyboard port; or USB ports (for a USB keyboard and USB mouse); or, for legacy Sun systems, a Sun style keyboard port (8 pin mini-DIN).

## 3 The KM0832 (Front View)



1. Power LED
2. Port LEDs
3. User Port LEDs
4. Reset Button
5. User Port 1 Switch
6. User Port 1

## 4 The KM0832 (Rear View)

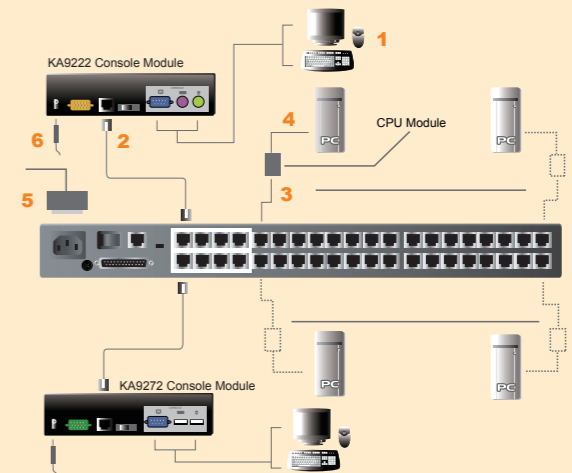


1. Power Socket
2. Power Switch
3. Configuration Port
4. Firmware Upgrade Switch
5. Grounding Terminal
6. Chain Out Port
7. User Port
8. KVM Ports

## 5 Single Stage Installation

1. Connect the Console (keyboard, monitor and mouse) to the Console Module.
2. Connect the Console Module to a User Port on the KM0832.
3. Connect the CPU Module to the KM0832 using Cat 5 cable.  
**Note:** 1. The distance between any Console Module and any CPU Module must not exceed 300m (1000').  
 2. We strongly recommend that you use Cat 5 shielded twisted pair (STP) cable.
4. Connect the CPU Module to the computer. Repeat steps 1 - 4 for all consoles and computers that you wish to connect.
5. After all the computers have been connected, plug the female end of the power cord into the KM0832's Power Socket; plug the male end into an AC power source.
6. For each Console Module, plug its power adapter into an AC power source; plug the power adapter cable into the unit's power jack.
7. Turn on the power to the KM0832.
8. Turn on the power to the computers.

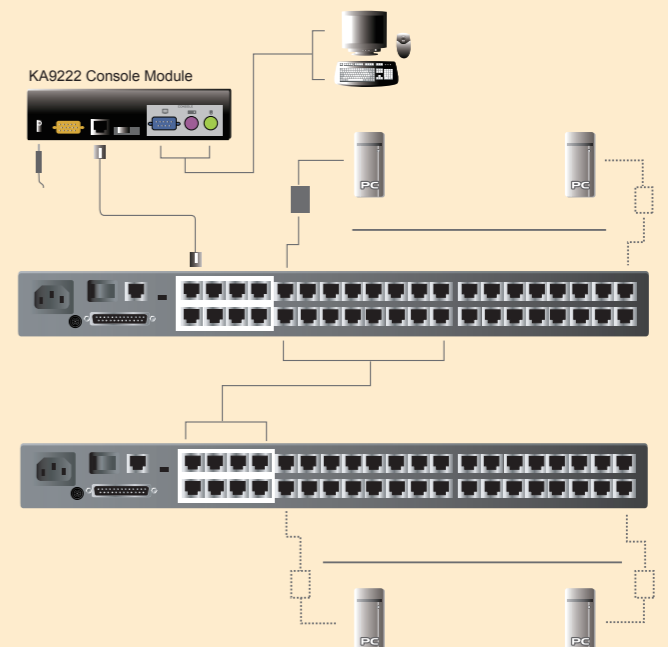
## 6 Single Stage Installation Diagram



## 7 Cascaded Installation

Up to two additional levels of KM0832 Matrix KVM switches may be cascaded from the KM0832's CPU ports.

1. Make sure that power to all the devices you will be connecting up has been turned off.
2. Use Cat 5 cable to connect any 8 CPU Ports on the First Stage KM0832 unit to the User Ports on the Second Stage KM0832 unit.  
**Note:** 1. The distance between the First and Third Stage KM0832 units must not exceed 300m (1000').  
 2. We strongly recommend that you use Cat 5 shielded twisted pair (STP) cable.
3. Use CPU Modules to connect any available CPU Port on the KM0832 to the keyboard, video and mouse ports of the computers you are installing.
4. Plug the Second Stage unit's power cable into an AC source; plug the power adapter cable into the unit's Power Socket.
5. Repeat steps 2 - 4 for any other Second Stage units you wish to install.
6. Repeat steps 2 - 5 for any Third Stage units you wish to install.
7. Turn on the power for the First Stage unit. Wait one minute.
8. Turn on the power for the Second Stage units. Wait one minute.
9. After all the Stations are on, power on the computers.

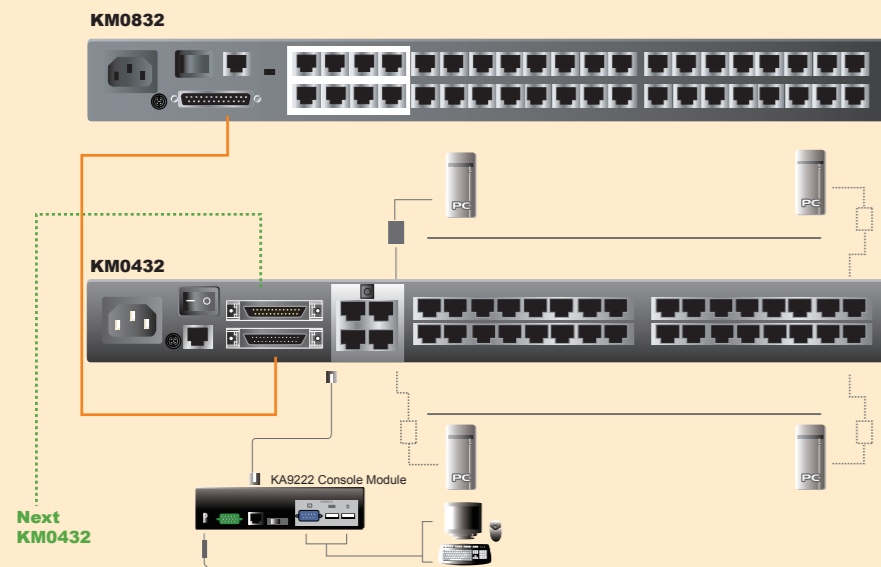


# 8

## Daisy Chained Installation

**Note:** If the daisy chain feature is not operative on your unit, you will need a newer version of the firmware. Contact your dealer for details.

1. Make sure that power to all the devices you will be connecting up has been turned off.
2. Use a daisy chain cable set to connect the Chain Out port of the parent KM0832 unit to the Chain In port of the child KM0432 unit.
3. If you wish to install any consoles on this switch, follow the procedure described for the Single Stage Installation.
4. Use CPU Modules to connect any available CPU Port on the KM0432 to the keyboard, video and mouse ports of the computers you are installing.
5. Repeat the above steps for any additional KM0432 units you wish to add to the chain.
6. Plug the power cord into an AC power source and into the KM0832's power socket.
7. Switch on the power for the KM0832. Wait one minute for the unit to ascertain its position.
8. Switch on the power for each KM0432 Station on the installation in turn. In each case, wait for the Station ID to be ascertained and displayed on the current station before powering on the next one.
9. After all the Stations are up, power on the computers.



# 10

## KM0832 Administrator Utility 2

The menu items at the top of the main screen are used to search for, and configure the KM0832 stations and ports, as well as manage user accounts.

The function of each menu item is described in the following table:

| Menu Item          |                         |  | Description  |
|--------------------|-------------------------|--|--|
| VIEW               |                         |  | Click to open the View page and set screen viewing options.  |
| SETTINGS           |                         |  | Click to open the Settings page, which allows users to change account passwords and set other OSD preferences.   |
| ADMINISTRATION     | Account Management      | User Management  | Administrators can Add, Modify, or Delete user accounts; or, select a user from the list to change the user's password, group membership, and user type. |
|                    |                         | Group Management   | Administrators can Add, Modify, or Delete group accounts.  |
|                    | Port Management         |  | Click to open the Port Select page. Administrators can click on a Port ID to configure the port.   |
|                    | Station Management      |  | Click to open the Station Management page, which allows administrators to change the station name and set the Webpage Session Timeout.                   |
|                    | Super Adm Configuration | Set Network  | Click to open the Network Settings page, which allows the Super Administrator to change DHCP, SMTP server, and network settings.                         |
| Date & Time        |                         | Click to open the Date & Time page, which allows the Super Administrator to set the date and time of the KM0832. |  |
| System Information |                         | Click to open the System Information page, which displays general system settings.                               |  |
| SEARCH             |                         |  | Click to open the Search page. Users can search the KM0832 station and attached computer names by inputting key strings.                                 |

The icons on the bar at the top of the screen are for use only by administrators (except for the Logout icon). The function of each icon is described in the following table:

| Icon    | Description   |
|---------|---|
| UPGRADE | Click to open the Firmware Upgrade page, which allows the Super Administrator to upgrade the firmware version.  |
| BACKUP  | Click to open the Backup and Restore Settings page. It allows administrators to backup the system configuration to a local computer, or to restore a system configuration to the station. |
| SESSION | Administrators can click to view all active sessions. Select a session and click End Session to force a user logout.  |
| LOG     | Administrators can click to open the Event Log dialog box. To view log data, enter a date range in the From and To fields, and click OK.  |
| LOGOUT  | Click to logout from the KM0832 and close the session.  |
| HELP    | Click to open the KM0832 help file.   |

# 11

## Hotkey Operation

### Invoking Hotkey Mode (HKM)

1. Press and hold down the **Num Lock** key.
2. Press and release the **Minus** key.
3. Release the **Num Lock** key.

[Num Lock]+[-]

### Hotkey Summary

| Hotkey     | Action            | Description   |
|------------|-------------------|---|
| [Num Lock] | [Port ID] [Enter] | The switch accesses the computer that corresponds to that Port ID.  |
| + [-]      | [T] [n] [Enter]   | Sets the Auto Scan interval to n seconds – where n is a number from 1-255   |
|            | [A]               | Invokes Auto Scan Mode. When Auto Scan Mode is in effect, [P] or left clicking the mouse pauses Auto Scanning. When Auto Scanning is paused, press any key or Left Click the mouse to resume Auto Scanning. |
|            | ←                 | Skips from the current port to the first previous accessible port.  |
|            | →                 | Skips from the current port to the next accessible port.  |
|            | [B]               | Toggles the Beeper On or Off.   |

# 12

## OSD Operation

### Basics:

1. Tap the [Scroll Lock] key twice to bring up the OSD Main Screen.
2. When the login screen appears, key in a valid username and password, and then press [Enter].  
**Note:** The first time that the OSD is run, or if the password function has not been set, simply press [Enter].
3. The OSD always starts in List view, with the highlight bar at the same position it was in the last time it was closed. The simplest way to access a port is to either double-click it, or move the highlight bar to it, and then press [Enter].

### OSD Main Screen Headings:

| Heading | Explanation   |
|---------|---|
| PN      | This column lists the Port ID numbers (Station Number – Port Number) for all the CPU ports on the installation. The simplest method to access a particular computer is to move the Highlight Bar to it, and then to press Enter |
| TYPE    | Lists the type of CPU Module used to attach the computer.   |
| NOTE    | If a port has been given a name, its name appears in this column.   |

### OSD Navigation:

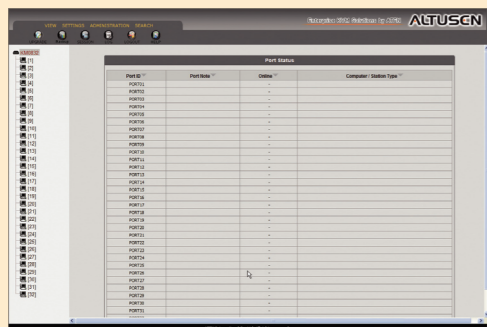
- To dismiss the Main Screen, and deactivate the OSD, Click the X at the upper right corner of the OSD Window; or press [Esc].
- To Logout, press [F8] on the keyboard, or click F8 on the OSD menu bar.
- To move up or down through the list one line at a time, Click the Up and Down Triangle symbols or use the Up and Down Arrow Keys.
- To move up or down through the list one screen at a time, click the Up and Down Arrow symbols or use the [Pg Up] and [Pg Dn] keys.
- To activate a port, double-click on it, or move the Highlight Bar to it, and then press [Enter]. After performing any of the above mentioned actions, you automatically return to the previous menu.

### OSD Functions:

| Function | Name | Description  |
|----------|------|--|
| F1       | HELP | Displays information about the user and briefly describes each OSD function.   |
| F2       | VIEW | VIEW allows you to broaden or narrow the scope of which ports the OSD displays (lists) on the main Screen.   |
| F3       | SET  | SET allows the Administrator and Users to set up their own working environments. A separate profile for each is stored by the OSD and is activated according to the Username that was provided during Login. |
| F4       | ADM  | ADM is an Administrator Only function that allows the Administrator to configure and control the overall operation of the OSD.   |
| F5       | SCH  | Please refer to the <b>SEARCH</b> function under <i>Browser Operation</i> .  |
| F7       | SCAN | SCAN allows you to automatically switch among the available computers at regular intervals so that you can monitor their activity without having to take the trouble of switching yourself.                  |
| F8       | LOUT | LOUT is used to log out of your current OSD session.   |

# 9

## KM0832 Administrator Utility 1



The KM0832 Administrator Utility is a browser-based application that enables administrators to manage users, groups, stations, and ports; configure network settings; upgrade firmware; and backup and restore configurations. Users can change their account passwords and configure personal profile preferences. The default IP Address to connect to the KM0832 Administrator Utility is 192.162.0.10

# 13

## Specifications

| Function             | KM0832                      |                                  |
|----------------------|-----------------------------|----------------------------------|
| Computer Connections | Direct                      | 32                               |
|                      | Max.                        | 8,000 (via Cascade)              |
| Console Connections  | 8                           |                                  |
| Port Selection       | OSD, Hotkey                 |                                  |
| Connectors           | Console Ports               | 8 x RJ-45 Female (Black)         |
|                      | KVM Ports                   | 32 x RJ-45 Female (Black)        |
|                      | Daisy Chain Out Ports       | 1 x HPDB-50 Female (Black)       |
|                      | Configuration               | 1 x RJ-45 Female (Black)         |
|                      | Maintenance                 | 1 x RJ-45 Female (Black)         |
|                      | Power                       | 1 x 3-prong AC Socket            |
| Switches             | Reset                       | 1 x Semi-recessed Pushbutton     |
|                      | Power                       | 1 x Rocker                       |
|                      | F/W Upgrade                 | 1 x Slide                        |
|                      | User Port 1                 | 1 x Slide                        |
| LEDs                 | On Line (Console Port)      | 8 (Green)                        |
|                      | On Line/Selected (KVM Port) | 32 Dual Colored (Green/Red)      |
| Power                | 1 (Blue)                    |                                  |
| Emulation            | Keyboard/ Mouse             | PS/2; USB (PC, Mac, Sun); Serial |
| Video                | 1024x768@60Hz (300m)        |                                  |
| Scan Interval        | 1-240 seconds               |                                  |
| I/P Rating           | 100-240VAC, 50/60Hz; 1A     |                                  |
| Power Consumption    | 120V/19W; 230V/20W          |                                  |
| Environment          | Operating Temp.             | 0-50°C                           |
|                      | Storage Temp.               | -20-60°C                         |
|                      | Humidity                    | 0-80% RH, Non-condensing         |
| Physical Properties  | Housing                     | Metal                            |
|                      | Weight                      | 4.90 kg                          |
|                      | Dimensions (L x W x H)      | 43.36 x 38.00 x 4.40 cm (1971U)  |