

ALTUSCEN™

Enterprise Solutions by ATEN

Power over the NET (PN9108 / PN9108U) QUICK START GUIDE

© Copyright 2012 ATEN International Co., Ltd. www.aten.com
Altusen and the Altusen logo are trademarks of ATEN International Co., Ltd.
All rights reserved. All other trademarks are the property of their respective owners.
This product is RoHS compliant PAPE-1214-B01G Printing Date: 04/2012

Online Registration
International:
• http://support.aten.com
North America:
• http://www.aten-usa.com/product_registration

Technical Phone Support

International:
• 886-2-8692-6959
China:
• 86-10-5255-0110
Japan:
• 81-3-5615-5811
Korea:
• 82-2-467-6789
North America:
• 1-888-999-ATEN Ext: 4988
United Kingdom:
• 44-8-4481-58923



Patent No.
CN ZL 200420007513.7
DE 20204005010.4
TW M253167
US 6909609

All information, documentation, and specifications contained in this media are subject to change without prior notification by the manufacturer. Please visit our website to find the most up to date version.

1 Package Contents

The complete package consists of:

- 1 PN9108 Station
- 1 PN9108 to AC Source Power Cord (1.8M)
- 8 Power Outlet Power Cords
- 8 Safe Shutdown Cables
- 1 PON Cable (DB9 F to DB9 M)
- 4 Foot Pads
- 1 Rack mount kit (Brackets and Philips Head Hex M3 x 8 Screws)
- 1 User Instructions
- 1 Software Disk



These instructions show how to install the PN9108 Power over the NET. For detailed information, refer to the user manual included in the kit.

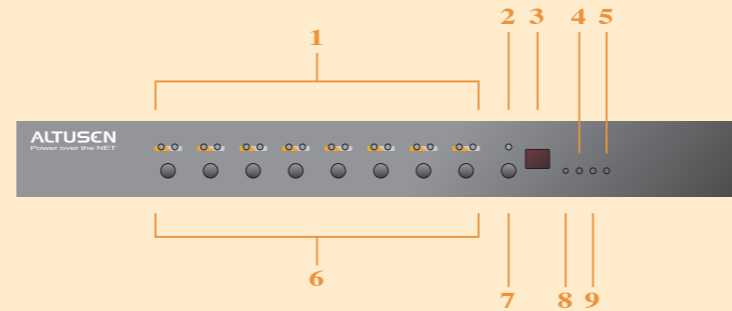
Power cord : The power source is a 220- 240 V AC supply, use a tandem (T blade) type attachment plug with ground conductor power cord that meets the respective European country's safety regulations, such as VDE for Germany. Plug should comply with the VDE 0620 specification; the connector should comply with the VDE 0625 specification. A minimum 10A, 0.75 mm² x 3G power cord (H05VV-F or VW-1) should be used.

Power outlet cord : Connector should comply with the VDE 0625 or EN60320 specification. A minimum 10A, 0.75 mm² x 3G power cord (H05VV-F or VW-1) should be used.

Note:
Use the power cord supplied with this package. If you need to purchase additional power cord, you must choose ones that comply with the above specifications.

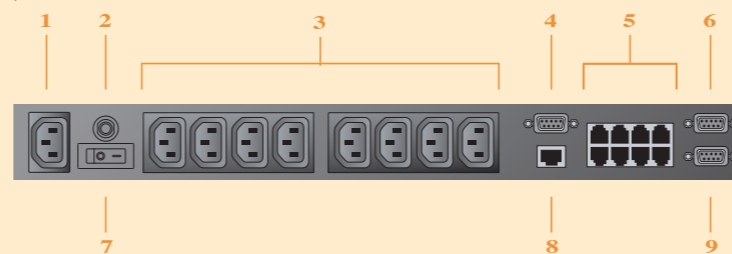
2 The PN9108 Unit (Front View)

- | | |
|-------------------------|---------------------------|
| 1. Port LEDs | 6. Power Control Buttons |
| 2. Current LED | 7. Current Display Switch |
| 3. Station ID LED | 8. Reset Switch |
| 4. 10/100 Mbps Data LED | 9. Link LED |
| 5. Power LED | |



3 The PN9108 Unit (Rear View)

- | | |
|------------------------|---|
| 1. Power Socket | 6. PON (Power over the NET) Output Port |
| 2. Circuit Breaker | 7. Power Switch |
| 3. AC Power Outlets | 8. RJ-45 Port |
| 4. RS-232 Port | 9. PON Input Port |
| 5. Safe Shutdown Ports | |

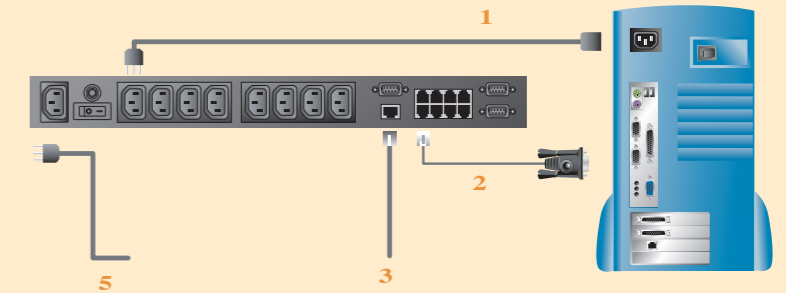


4 Single Stage Installation

1. For each computer, use an AC Output cable to connect from any available PN9108 output port to the computer's AC socket.
2. For Windows 98E, ME, NT, 2000, XP, and 2003 Server computers, for each computer use a Safe Shutdown cable to connect from the PN9108's Safe Shutdown port to the computer's Serial port.
3. Plug the LAN or WAN cable into the PN9108's RJ-45 socket.

4-1 Single Stage Installation

4. Use the AC power cord provided with this package to connect the PN9108's Power Socket to an AC power source.
5. Turn on the PN9108.
6. Turn on the computers.



* Battery Replacement

This equipment is provided with a replaceable lithium battery: CR2032 3V. Replacement by an incorrect type may result in an explosion.

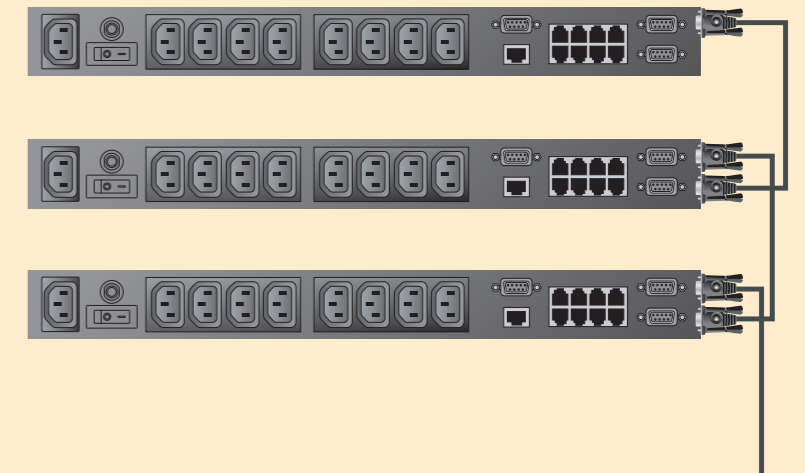
CAUTION!

RISK OF EXPLOSION IF BATTERY IS REPLACED BY AN INCORRECT TYPE.
DISPOSE OF USED BATTERIES ACCORDING TO THE INSTRUCTIONS.

5 Daisy Chaining Installation

To manage even more computers, up to 15 additional PN9108 Stations can be daisy chained down from the top level unit. In this way, up to 128 computers can be managed on a complete installation.

Note: In a daisy chained installation, a switch is the child of the switch above it, and the parent of the switch below.

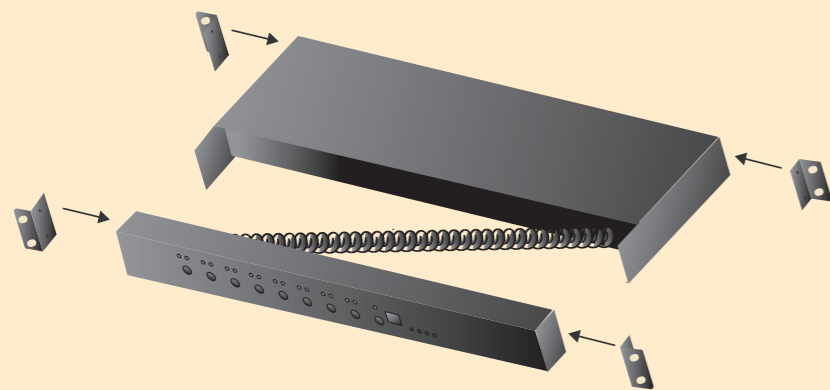


6 Rack Mounting

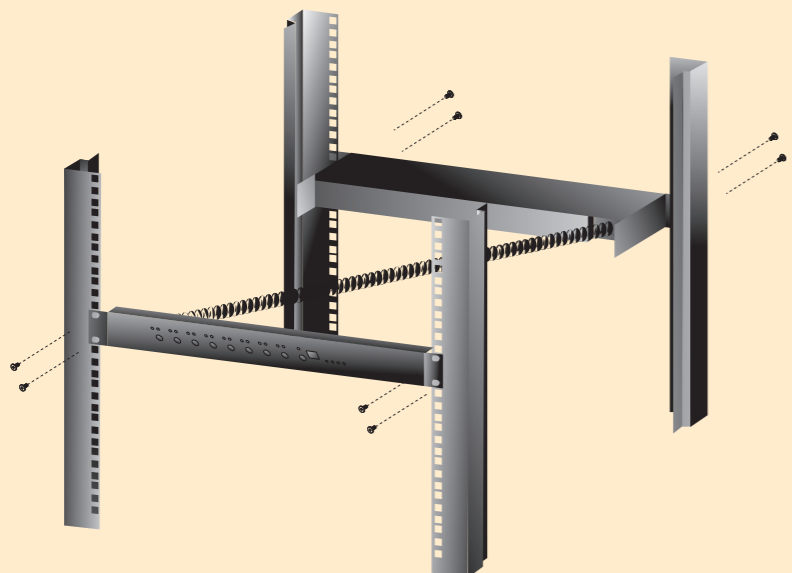
1. Separate the front and rear modules by removing the four module attaching screws.



2. Screw the rack mounting brackets into the front and rear modules.



3. Screw the mounting brackets to the rack.

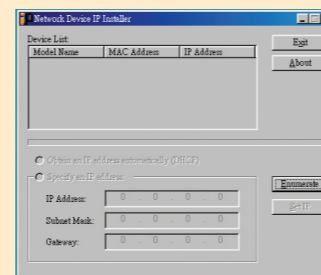


7 Browser operation

The most convenient way to operate the PN9108 is with an internet browser. To begin:

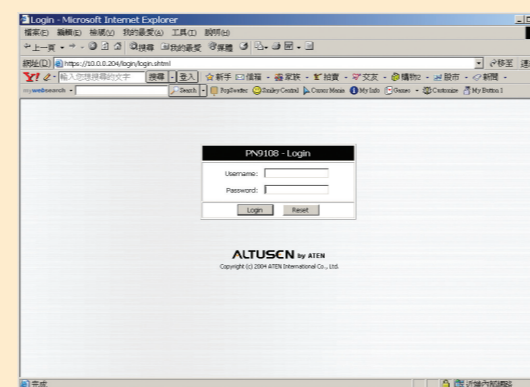
To ascertain and set an IP address for your device when it is assigned automatically via DHCP:

- Run IPInstaller.exe (included in our software CD)
- Click "Enumerate" to refresh the Device List if necessary
- Select the device
- Select "Obtain an IP address automatically (DHCP)"
- Click "Set IP" and wait for the IP setting procedure to finish



If your installation uses fixed IP addresses, select "Specify an IP address", key in the appropriate IP information for the IP address, Submask, and Gateway, then click "Set IP"

1. Open your browser and specify the IP address of the PN9108 you want to access in the browser's URL location bar.
2. A Security Alert dialog box appears. Accept the certificate. A login dialog box, like the one below, appears:



3. Provide a valid Username and Password (set by the PN9108 administrator), then Click Login to continue.

If you are the administrator, and are logging in for the first time, use the default Username: **administrator**; and the default Password: **password**.

After you have successfully logged in, the PN9108 Main Screen appears:



Note:

For security purposes, we strongly recommend you remove these and give yourself a unique Username and Password with the appropriate Administrator permissions. This setting can be found under "General" setting in the main screen.

8 Specifications

Function	PN9108A	PN9108G	
Power Characteristics	100-240 VAC; 15A*	100-240 VAC; 10A**	
Power Inlet	1 x IEC 60320/C14 (M)		
Power Outlets	8 x IEC 60320/C13 (F)		
I/P Rating (Total input -max)	100-120 V AC; 50/60Hz; 12A	220-240 V AC; 50/60Hz; 10A	
O/P Rating	Per Port (max)	100-120 V AC; 50/60Hz; 9A	
	Total (max)	100-120 V AC; 50/60Hz; 11A	
LEDs	Outlet Power	8 (orange)	
	Remote Access	8 (green)	
	Link	1 (green)	
	10/100 Mbps	1 (orange/green)	
	Power	1 (blue)	
	Current	1 (red)	
Connectors	Station ID	2 x 7 segment (yellow)	
	PON In	1 x DB-9 (F)	
	PON Out	1 x DB-9 (M)	
	LAN	1 x RJ-45	
	RS-232	1 x DB-9 (M)	
Switches	Safe Shutdown	8 x 6-pin Safe Shutdown Jacks (F)	
	Power	1 x Rocker	
	Outlet On / Off	8 x Pushbutton	
	Remote On / Off	8 x Pushbutton	
	Sta. ID Display	1 x Pushbutton	
Power Consumption	Reset	1 x Semi hidden	
	Power Consumption (no load)	120V; 60Hz; 16W	230V; 50Hz; 16W
	Power Consumption (max. load)	120V; 60Hz; 1440W	230V; 50Hz; 2300W
	Environment	Operating Temp.	0 - 40 °C
Storage Temp.		-20 - 60 °C	
Humidity		0 - 80% RH, Non-condensing	
Physical Properties	Housing	Metal	
	Weight	4.2 kg	
	Dimensions (L x W x H)	43.24 x 25.42 x 4.40 cm (19"1U)	

* Units are certified to 80% of max. current rating (100-120 VAC).

** Units are certified to 220-240 VAC.