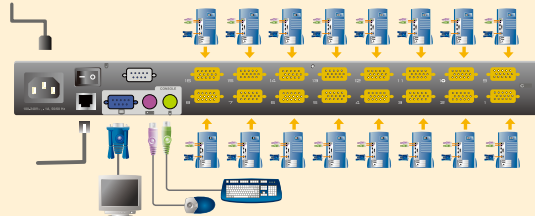


## 6

## Hardware Installation

1. Plug the keyboard, mouse, and monitor into the unit's Console Ports.
2. Use KVM cable sets to connect the CPU Ports to the keyboard, video and mouse ports of the computers that you are installing.
3. Plug the LAN/WAN cable into the LAN Port on the unit.
4. Plug the female end of the power cord into the Power Jack on the unit; plug the male end into an AC power source.
5. Turn on the power to the unit.
6. After the unit is powered on, turn on the computers.



## 7

## Operation 1

The KN9108 / KN9116 uses a browser for remote operations. To bring up the Main Screen, open your browser and specify the unit's IP address in the URL location bar. If you don't know the IP address, ask your administrator for it.



Provide a valid username and password, and then click **Login** to continue.

## 8

## Operation 2

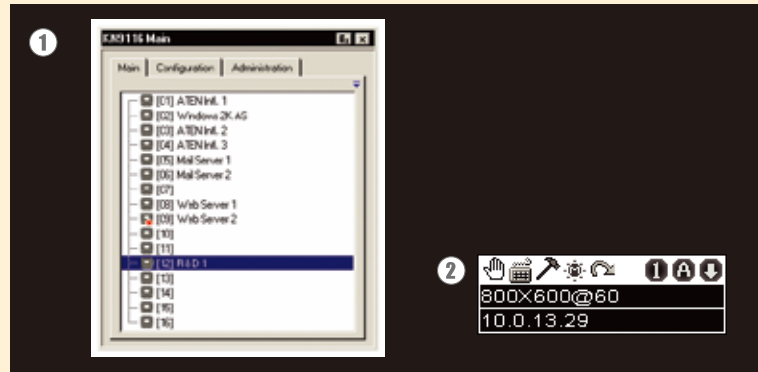
Once you have completed the login process, click the Windows Client icon. The Win32 Client dialog box appears and notifies you that it is connected to a specific IP address (i.e. the KN9108 / KN9116). Click **Switch** to invoke the On Screen Display (OSD).



## 9

## Operation 3

The OSD appears in the center of the screen, as does the Windows Client Control Panel in the lower right-hand corner.



The Main tab on the OSD lists the status of each port on the KN9108 / KN9116. Use it to quickly gain access to the ports.

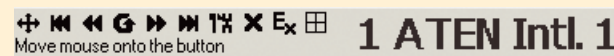
**Port entries are described below:**

- A computer icon appears to the left of the port number. The computer icon is lit green for computers that are powered on and On Line.
- If a port is selected for Quick View scanning, a pair of binoculars icon appears to the left of the port number.
- The Port Numbers are listed in brackets for all the CPU ports on the installation. To access a computer, double-click on the port entry. After you select a port, the unit captures the video output of the remote system and displays it on your monitor. It also captures your local keystroke and mouse input and sends it to the remote system.
- If a port has been given a name, its name appears to the right of the port number. To name a port, first highlight the port by clicking on it, and then click once more to the right of the port number. In the field that appears, enter the port name. (These are two single-clicks. Double-clicking will switch to the port.)

**Windows Client Control Panel**

Icon	Function
	Click and drag to move the Windows Client Control Panel.
	Click to open the Hotkey Setup dialog box.
	Click to open the Video Options dialog box.
	Click to open the Message Board.
	Click to exit the Remote View.
Space	Pause over the space to view the video resolution and IP address of the remote device.
	These LEDs show the Num Lock, Caps Lock, and Scroll Lock status of the remote computer. Click on an icon to toggle the status.

An OSD Toolbar is available to help you control the KN9108 / KN9116 from within the captured port. To bring up the toolbar, tap the OSD Hotkey (Scroll Lock or Ctrl) twice. The toolbar appears in the upper left corner of the screen:



To dismiss the toolbar and bring up the OSD main screen, click the OSD Hotkey once.

	Click and drag to move the toolbar.
	Click to move to the first available port on the installation.
	Click to move to the first previous available port.
	Click to begin Auto Scan mode.
	Click to move to the next available port.
	Click to move to the last available port on the installation.
	Click to open the OSD.
	Click to close the toolbar.
	Click to log out and exit the Windows Client application.
	Click to invoke Panel Array Mode.

## 10

## Operation 4

**Mouse Setup**

The following mouse setting procedures should be performed on each computer connected to the KN9108/KN9116.

**Windows Systems:**

Note: You must use the generic mouse driver supplied with Windows.

- \* XP / Server 2003 -- middle position; Enhance pointer precision: off
- \* 2000 / ME -- Mouse motion: middle position; Acceleration: off
- \* NT / 98 / 95 -- Mouse speed: slowest

**Sun / Linux Systems:**

Open a terminal session and issue the following command:

- \* Sun: xset m 1
- \* Linux: xset m 0

## 11

## Specifications

Function		KN9108	KN9116
Console Connections	Local	1	
	Remote	1	
Computer Connections	Direct	8	16
	Maximum	64 (via Cascade - KH88)	128 (via Cascade - KH88)
Computer Port Selection		OSD / Hotkey / Push Buttons	
Connectors	Console VGA	1 x HDB-15 female	
	Console K/M	2 x 6 pin mini-DIN female (Keyboard: purple; Mouse: green)	
	Computer Ports	8 x SPHD-15 female	16 x SPHD-15 female
	LAN	1 x RJ-45	
	Power On Port	1 x DB-9 male	
	Power Socket	3 pin IEC AC power inlet	
Switches	Power	1 x Rocker switch	
	Reset	1 x Semi-recessed push button	
	Port Up / Port Down	2 x push button	
LEDs	On Line	8 (green)	16 (green)
	Selected	8 (orange)	16 (orange)
	Link	1 (green)	
	10 / 100 Mbps	1 (orange / green)	
	Power	1 (blue)	
Input Rating		100V~240V, 50/60Hz; 250mA	
Power Consumption		120V / 60Hz 12W; 230V / 50Hz 12W	
Keyboard / Mouse Emulation		PS/2	
Scan Interval		User Specified: 1 - 255 secs.	
Video		1600 x 1200 @ 60Hz; DDC2B	
Environment	Operating Temperature	0° - 40°C	
	Storage Temperature	-20° - 60°C	
	Humidity	0 - 80% RH, Non-condensing	
Physical Properties	Housing	Metal	
	Weight	4 kg	4.2 kg
	Dimensions (L x W x H)	43.7 x 26 x 4.4 cm	43.7 x 26 x 4.4 cm
		(19" 1U)	(19" 1U)



**Online Registration**  
**International:**  
 • <http://support.aten.com>  
**North America:**  
 • [http://www.aten-usa.com/product\\_registration](http://www.aten-usa.com/product_registration)  
 (ATEN TECH)  
 • <http://support.aten.com> (ATEN NJ)  
**Technical Phone Support**  
**International:**  
 • 886-2-86926959  
**North America:**  
 • 1-888-999-ATEN (ATEN TECH)  
 • 1-732-356-1703 (ATEN NJ)

#### KVM Over the NET™ (KN9108 / KN9116) QUICK START GUIDE

© Copyright 2007 ATEN® International Co., Ltd. [www.aten.com](http://www.aten.com)  
 Altusen and the Altusen logo are trademarks of ATEN International Co., Ltd.  
 All rights reserved. All other trademarks are the property of their respective owners.  
 This product is RoHS compliant PAPE-1214-801G Printing Date: 11/2007



## 1

### Package Contents

The complete KN9108 / KN9116 package consists of:

- 1 KN9108 or KN9116 KVM over the NET™
- 2 Custom KVM Cable Sets
- 1 Power Cord
- 1 Rack Mounting Kit (Brackets and Phillips head hex M3 x 8 Screws)
- 4 Foot Pads
- 1 User Manual
- 1 Quick Start Guide
- 1 Warranty Registration Card

**Note:** Check to make sure that each item in the above list is included in your package. If any item is missing or was damaged in shipment, please contact your dealer. Follow the installation and operation procedures carefully to prevent damage to the KN9108/KN9116 unit and any connected devices.

## 2

### System Requirements

#### Local Console

- A VGA, SVGA, or Multisync monitor capable of the highest resolution that you will be using on any computer in the installation.
- A keyboard with a 6-pin mini-DIN (PS/2 style) connector.
- A mouse with a 6-pin mini-DIN (PS/2 style) connector.

#### Computers

- A VGA, SVGA, or Multisync port.
- A 6-pin mini-DIN (PS/2 style) keyboard port.
- A 6-pin mini-DIN (PS/2 style) mouse port.

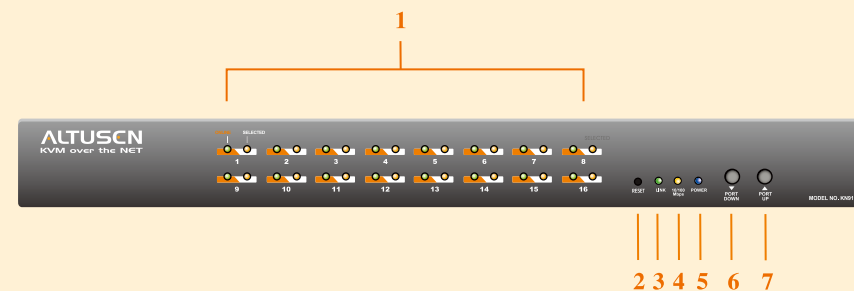
#### Remote Computers

- For best results, computers that remotely access the KN9108 / KN9116 should have at least a P III 1 GHz processor, with their screen resolution set to 1024 x 768.
- For the Windows Client, you must have DirectX 7.0 or higher installed.
- For the Java Client, you must have Sun's Java 2 JRE (1.4.2 or higher).
- Browsers must support 128-bit SSL encryption.
- For best results, a network transfer speed of at least 128 kbps is recommended.

## 3

### The KN9108 / KN9116 Unit (Front View)

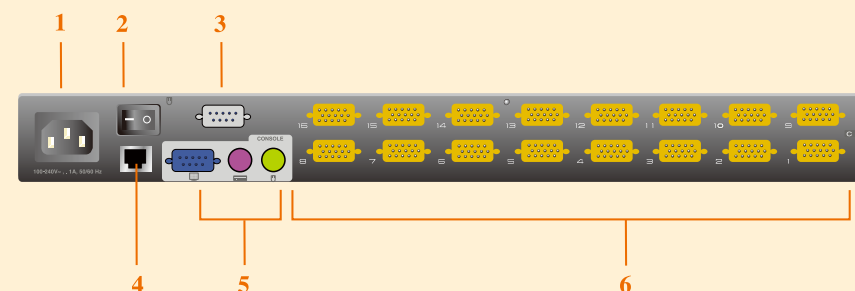
1. Port LEDs
2. Reset Switch
3. Link LED
4. 10/100 Mbps Data LED
5. Power LED
6. Port Down Button
7. Port Up Button



## 4

### The KN9108 / KN9116 Unit (Rear View)

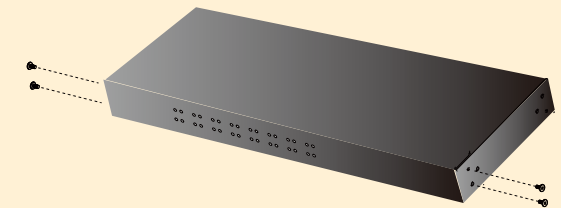
1. Power Jack
2. Power Switch
3. PON Port
4. LAN Port
5. Local Console Section
6. CPU Ports



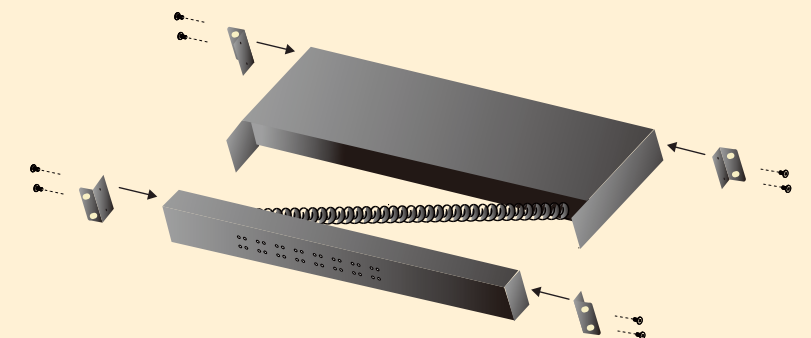
## 5

### Rack Mounting

1. Separate the front and rear modules by removing the four module attachment screws.



2. Using the screws provided with the rack mounting kit, screw the rack mounting brackets into the front and rear modules.



Phillips head hex M3 x 8

3. Screw the mounting brackets to the rack.

