

## Refrigerator Compartment

- A. Fan and antibacterial and anti-odour filter (depending on the model)
- B. Control panel with LED lights
- C. Shelves
- D. Level covering fruit and vegetable drawer
- E. Fruit and vegetable drawer
- F. Rating plate (located at side of crisper)
- M. Door trays
- N. Bottle holder (if provided)
- O. Bottle shelf

## Freezer Compartment

- G. Upper drawer (freezing area)
- H. Middle and lower drawers (area for storing frozen and deep frozen food)
- I. Middle and lower drawers (area for storing frozen and deep frozen food)
- L. Ice cube trays (if provided)

**Note:** All of the drawers, door shelves and shelves can be removed.

The ideal food storage temperatures are already factory-set.

**Read the instructions carefully before using the appliance.**  
Features, technical data and images may vary according to the model.

## 6th Sense FreshControl

Enables the appliance to rapidly reach optimal storage conditions in terms of internal temperature and humidity. In order for it to function correctly, the fan must also be turned on. It is possible to turn the function on/off (see Fan description).

## Fast Cool Function (fast cooling)

To quickly cool the refrigerator compartment, or six hours before putting a large quantity of food to be frozen in the freezer compartment, turn on the "Fast Cooling" function by repeatedly pressing the button until the 3 icons flash green and then stay constant.

The function automatically turns off after 30 hours and the temperature returns to the previous setting when the function is turned on.

To turn the function off manually, press the button.

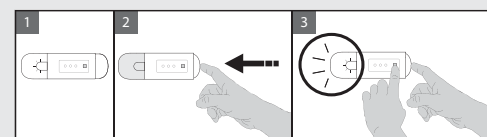
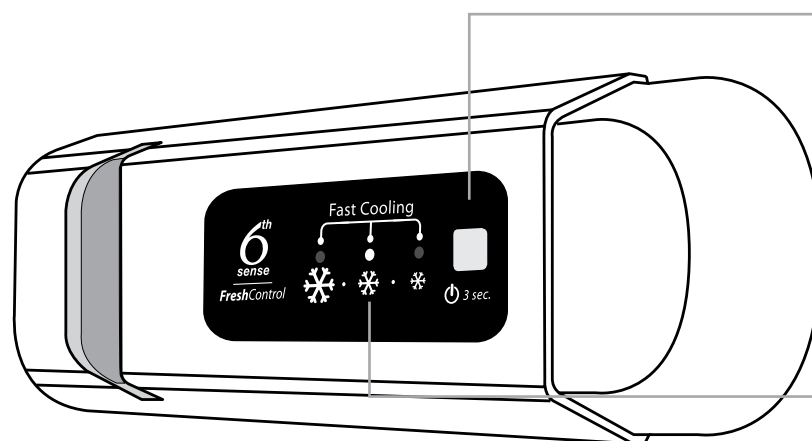
**Note:** do not put foods that are to be frozen in contact with others that are already frozen.

To maximise the freezing speed, the lower drawer can be removed and the food can be placed directly on the bottom of the compartment.

## Fan

The fan is pre-set to ON. To turn the fan on/off carry out the following steps: Press the light button as shown in figure 2.

The light will turn off. Without releasing the light button, also hold down the button as shown in figure 3. The light will flash just once if the fan is OFF, or it will flash 3 times if the fan is ON. If the ambient temperature exceeds 27°C, or if drops of water are present on the glass shelves, it is essential that the fan is on to ensure the proper preservation of the food. Deactivation of the fan allows energy consumption to be optimised.



## On/Stand-by

Press the button for 3 seconds to turn the appliance off (the control panel and the light will remain turned off). Press the button again briefly to reactivate the appliance.

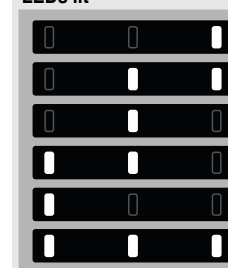
**Note:** This does not disconnect the appliance from the power supply.

## Refrigerator compartment temperature

The three LED indicators indicate the refrigerator compartment set temperature. It is possible to set a different temperature with the button.

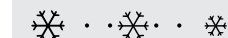
The following adjustments are possible:

### LEDs lit



### Set temperature

- High (less cold)
- Medium-high
- Medium
- Medium-low
- Low (colder)
- Fast cool



What to do if...	Possible reasons:	Solutions:
The control panel is switched off, the appliance does not work.	There may be an appliance power supply problem.	Check that: <ul style="list-style-type: none"> <li>- there is not a power outage</li> <li>- the plug is properly inserted in the socket and any bipolar power switch is in the correct position (this enables the power supply to the appliance)</li> <li>- the household electrical system protection devices are efficient</li> <li>- the power cable is not broken.</li> </ul> Turn the appliance on by briefly pressing the button (see On/Stand-by function).
The inside light does not work.	The appliance could be in On/stand by mode. The light may need replacing. Malfunction of a technical component.	Contact an authorized Service Centre.
The inside light flashes.	Door alarm active. It is activated when the refrigerator compartment door remains open for a prolonged period of time.	To stop the alarm, close the refrigerator door. On reopening the door, check the light works.
The temperature inside the compartments is not low enough.	There could be various causes (see "Solutions").	Check that: <ul style="list-style-type: none"> <li>- the doors close properly</li> <li>- the appliance is not installed near a heat source</li> <li>- the set temperature is adequate</li> <li>- the circulation of air through the vents at the bottom of the appliance is not obstructed (see installation manual).</li> </ul>
There is water on the bottom of the refrigerator compartment.	The defrost water drain is blocked.	Clean the defrosting water drain (see section "Maintaining and cleaning the appliance" in the instructions for use).
Excessive amount of frost in the freezer compartment.	The door to the freezer compartment is not closed properly.	<ul style="list-style-type: none"> <li>- Defrost the freezer compartment.</li> <li>- Make sure the appliance has been correctly installed.</li> <li>- Check that there is nothing preventing the door from closing properly.</li> </ul>
The front edge of the appliance that the door gaskets seal against is hot.	This is not a defect. It prevents condensation from forming.	No solution is necessary.
One or more green symbols are flashing continuously and it is not possible to change the temperature set.	<b>Malfunction alarm</b> The alarm indicates a fault in a technical component.	Contact an authorized Service Centre.
The temperature of the refrigerator compartment is too cold.	<ul style="list-style-type: none"> <li>- The set temperature is too cold.</li> <li>- A large amount of fresh food may have been placed in the freezer compartment.</li> </ul>	<ul style="list-style-type: none"> <li>- Try to set a less cold temperature.</li> <li>- If fresh food has been placed in the freezer compartment, wait until it has fully frozen.</li> </ul>

**Note:** some noises, such as gurgles and hissing, caused by the refrigeration system, are normal.