

KVR800D2D4P6/4GEF

4GB 512M x 72-Bit DDR2-800

CL6 Registered w/Parity 240-Pin DIMM

DRAM Supported:

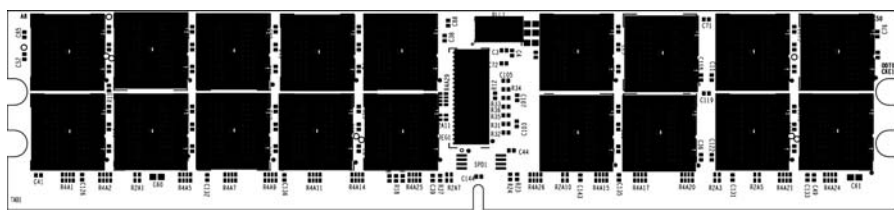
Elpida F-Die

DESCRIPTION:

This document describes ValueRAM's 512M x 72-bit 4GB (4096MB) DDR2-800 CL6 SDRAM (Synchronous **DRAM**) "dual rank" Registered w/Parity memory module. The components on this module include thirty-six 256M x 4-bit DDR2-800 SDRAM in FBGA packages. This 240-pin DIMM uses gold contact fingers and requires +1.8V. The electrical and mechanical specifications are as follows:

FEATURES:

- | | |
|---|-------------------------------|
| ✓ Clock Cycle Time (tCK) CL=6 | 2.5ns (min.) / 8ns (max.) |
| ✓ Row Cycle Time (tRC) | 60ns (min.) |
| ✓ Refresh to Active/Refresh Command Time (tRFC) | 127.5ns |
| ✓ Row Active Time (tRAS) | 45ns (min.) / 70,000ns (max.) |
| ✓ Single Power Supply of | +1.8V (+/- .1V) |
| ✓ Power | 5.400 W (operating) |
| ✓ UL Rating | 94 V - 0 |



PRIMARY SIDE

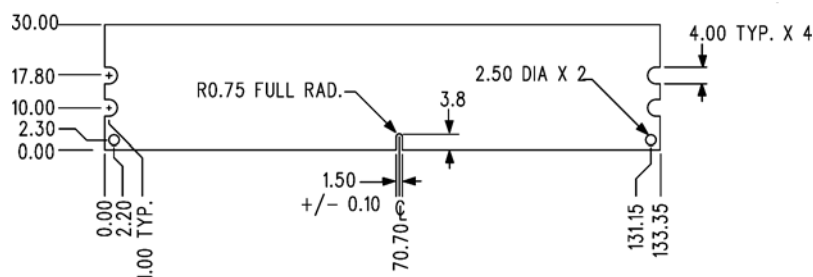
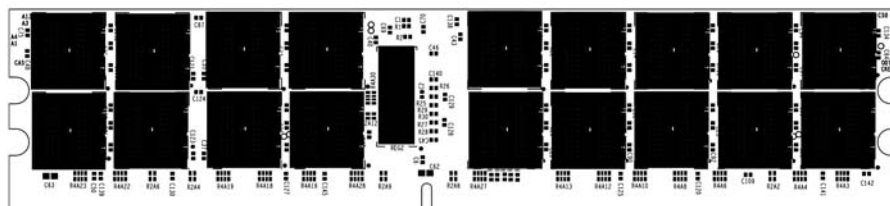


Figure 1: KVR800D2D4P6/4GEF 240-Pin DIMM