



Brief and handy: everything your dishwasher needs...
Before using for the first time, read the installation and operating instructions!

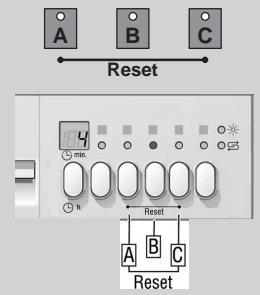
Set the water softening system *

Find out the **water hardness** at your water utility company and **enter**

* only **before using** the dishwasher for the first time or if the **water hardness changes**

Read off the setting ...

°dH	°fH	°Clarke	mmol/l	
0-6	0-11	0-8	0-1,1	0
7-8	12-15	9-10	1,2-1,4	1
9-10	16-17	11-12	1,5-1,8	2
11-12	18-21	13-15	1,9-2,1	3
13-16	22-29	16-20	2,2-2,9	4
17-21	30-37	21-26	3,0-3,7	5
22-30	38-54	27-38	3,8-5,4	6
31-50	55-89	39-62	5,5-8,9	7

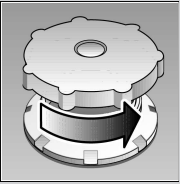


Quickly sorted ... and then set

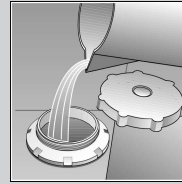
- Hold down programme button **B** and switch on the main switch, then release the buttons. The display of button **B** and the number 4 set by the factory flash.
- Each time button **B** is depressed, the setting increases by one; if 7 has been reached, the display jumps back to 0.
- Switch off the main switch. The selected setting has been stored in the appliance.

1 Fill with special salt

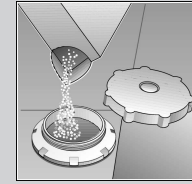
Dissolves limescale (not required for set value 0!)



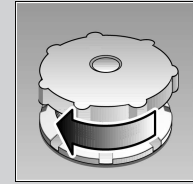
Unscrew the lid.



Only before using the dishwasher for the first time pour approx. 1 l / 2 pt water into the salt opening.



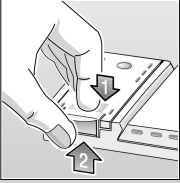
Pour in max. 1.5 kg / 3 lb 5 oz salt (never detergent!)



Screw on the lid. Switch on dishwasher immediately.

2 Fill with rinse aid

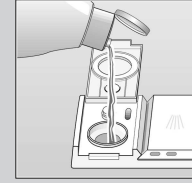
Everything is sparkling clean ...



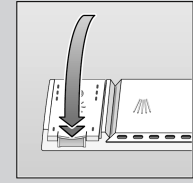
Press mark 1, lift up lid 2.



Refill whenever level indicator is light!



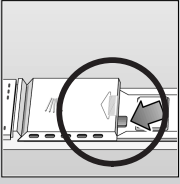
Pour in rinse aid.



Close the lid. CLICK!

3 Fill with detergent

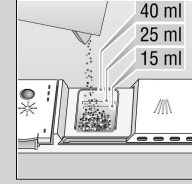
Very dirty dishes, a lot of detergent ...



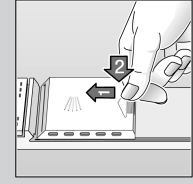
If required, open the lid (press the pin).



Warning,
combination products are not suitable for all programmes, follow manufacturer's instructions.



Pour in detergent.



Push the lid shut, press. PLOP!

5 Select programme

Quick, economical or intensive ...

Programme overview

This overview lists the max. possible number of programmes. The programmes supplied with your appliance are indicated on the fascia.

The programme data are values measured in the laboratory in compliance with Standard EN 50242. Deviations in practice are possible.

	Intensive 70°	Auto 55° / 65°	Eco 50°	Gentle 40°	Quick 45°	Prerinse
Duration in minutes	138	85-140	140	75	30	19
Electricity consumption in kWh	1,65	1,10-1,60	1,05	0,90	0,80	0,05
Water consumption in litres	16	10-17	12	14	10	4
with Aquasensor	13	–	–	11	–	–

Additional programmes **



Time selection
...switches on as soon as you press the time selection button:
Alters the programme start in hourly steps



Saving time (VarioSpeed)
... is obtained by increased energy consumption at a constant cleaning and drying performance.



Half load
... for a few items, saves water, energy and time

** some models

Switch on appliance

Press On/Off switch, running time of the chosen programme appears

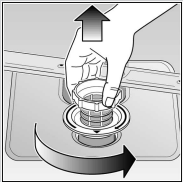
Switch off the appliance

Everything O.K...
When the display shows 0 (end of programme), press On/Off switch

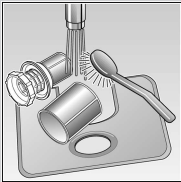
Maintenance and care

Strainers ...

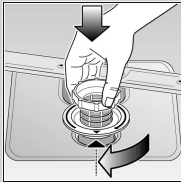
Check, if required, clean



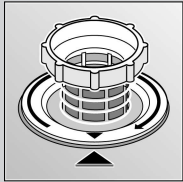
Rotate filter cylinder, remove filter system ...



rinse under flowing water ...



Insert ...



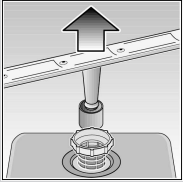
Screw in filter system NOTE MARK!

Cleaning the waste-water pump *

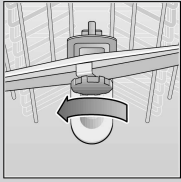
- * With some models
- Ladle out water and remove filters
- Unscrew cover (Torx T20)
- Check area of fan impeller for foreign objects
- Screw in cover and insert filters

Spray arms ...

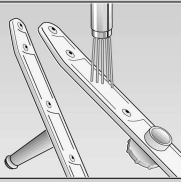
Remove blockages/deposits



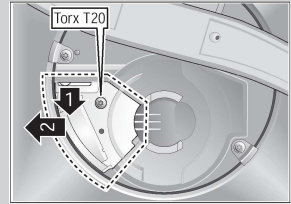
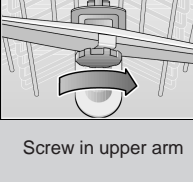
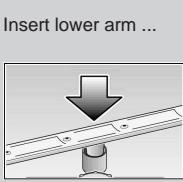
Pull lower arm upwards ...



Unscrew upper arm ...

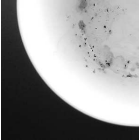
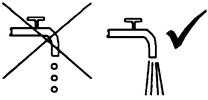


Clean spray nozzles under flowing water (perhaps with toothpick) ...



Rectifying minor faults yourself ...

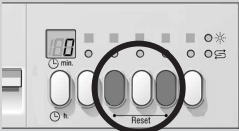
... as it is worth doing it yourself!

Fault	Possible causes	Remedial action	Fault	Possible causes	Remedial action
Residual water in the appliance	Waste water pump blocked The programme has not yet ended	▶ Clean waste-water pump (see above). ▶ Close appliance and switch on, or terminate programme (see Terminating the programme).	Utensils are not clean Sand or gritty residue on the utensils	Utensils are situated close together or one above the other Too little detergent 	▶ Separate the utensils, prevent contact points. ▶ Follow manufacturer's instructions (detergent). ▶ Select a more intensive programme. ▶ Clean the spray arms (see above). ▶ Clean the filters (see above). ▶ Arrange the utensils so that the spray arms can rotate freely.
Appliance is not running / stops Check water supply Display lights up	Supply fitting not open Supply hose kinked Supply fitting jammed or calcified 	▶ Open supply fitting. ▶ Install supply hose without kinks. ▶ 1. Unscrew water connection. 2. Clean filter in the water connection. 3. Flow rate must be min. 9 l/min. when water supply is open. If the flow rate is less, replace the supply fitting.	Stains and streaks	Rinse-aid dosage too high / too low	▶ Streaks: reduce dosage. ▶ Water or limescale stains: increase dosage.
Plastic / utensils discoloured	Too little detergent Discoloration caused by food colourings (tomato sauce)	▶ Follow manufacturer's instructions (detergent). ▶ Discoloration is harmless; subsequent rinse cycles will cause it to fade.	Milky film on the utensils (removable)	Water softening system incorrectly set; No salt	▶ Correctly set water softening system. ▶ Refill with salt.
Rust on the cutlery	Cutlery not rust-resistant Hard knife blades are more susceptible Extraneous rust	▶ Use dishwasher-proof cutlery. ▶ Never wash rusting parts in the appliance.	Milky film, glasses cloudy / dull (not removable)	Glasses not dishwasher-proof.	▶ Use dishwasher-proof glasses. ▶ Use a detergent suitable for glasses.

More information can be found in the operating instructions

Stopping the programme ...

Press and hold the two reset buttons simultaneously for approximately 3 seconds while the programme is running (RESET)



▶ "0" appears
▶ The programme will stop after 1 minute

▶ Switch off the appliance.

Loading the dishwasher correctly ...

Arrange dishwasher-proof utensils (having removed any ash, wax, grease, ink, sticky labels; remove, large remnants of jam, dairy products and food) according to the operating instructions and check that the spray arms can rotate freely.