

ALTUSCN™

Enterprise Solutions by ATEN

KL1508A/KL1516A 8/16-Port Cat 5 High-Density Dual Rail LCD KVM Switch Quick Start Guide

© Copyright 2012 ATEN® International Co., Ltd. www.aten.com
 Altusen and the Altusen logo are trademarks of ATEN International Co., Ltd.
 All rights reserved. All other trademarks are the property of their respective owners.
 This product is RoHS compliant PAPE-1214-U30G Printing Date: 04/2012

Online Registration International:
 • http://support.aten.com
North America:
 • http://www.aten-usa.com/product_registration

Technical Phone Support International:
 • 886-2-8692-6959
China:
 • 86-10-5255-0110
Japan:
 • 81-3-5615-5811
Korea:
 • 82-2-467-6789
North America:
 • 1-888-999-ATEN Ext: 4988
United Kingdom:
 • 44-8-4481-58923



Patent No.
 DE 102004019107 CN ZL 200610145931.6 TW I273372 US 7640289 US 7675742 JP 4456936
 CN ZL 02122202.9 CN ZL 200610079265.0 TW I288995 US 7613854 US 7506255 JP 4500751
 CN ZL 200410031699.0 CN ZL 200610081929.7 TW I325745 US 7684309 US 6160543
 CN ZL 200410042771.3 TW I83765 TW I327054 US 7405926 GB 2412456
 CN ZL 200510071431.8 TW I237162 TW I540311 US 7258868 GB 2425861
 CN ZL 20061007185.4 TW I269662 US 7366564 US 7414853 FR 0502014

All information, documentation, and specifications contained in this media are subject to change without prior notification by the manufacturer. Please visit our website to find the most up to date version.

1 Package Contents

- 1 KL1508A or KL1516A Cat 5 High-Density Dual Rail LCD KVM Switch with Standard Rack Mount Kit
- 1 Firmware Upgrade Cable
- 1 Power Cord
- 1 User Instructions

Optional Equipment

- Depending on any optional equipment that you may have purchased, one of the following may be included in your package:
- Standard Rack Mount Kit - Long
 - Easy Installation Rack Mount Kit - Short
 - Easy Installation Rack Mount Kit - Long

2 Requirements

External Console

- A VGA, SVGA, or multisync monitor capable of the highest resolution that you will be using on any computer in the installation
- A PS/2 or USB mouse
- A PS/2 or USB keyboard

Computers

The following equipment must be installed on the computers that connect to the KL1508A or KL1516A KVM ports:

- A VGA, SVGA or multisync port
- A Type A USB port and USB host controller (for USB KVM adapter cable connection, see following section)
- or -
- 6-pin Mini-DIN keyboard and mouse ports (for PS/2 KVM adapter cable connection, see following section)

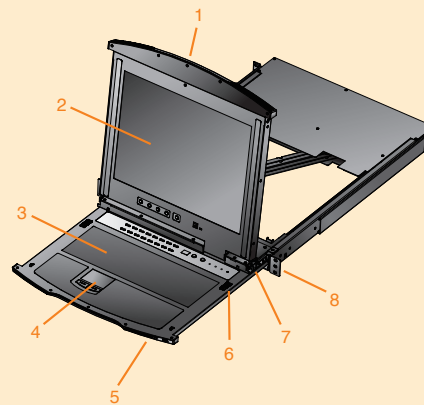
KVM Adapter Cables

- Cat 5e/6 cable is required to connect the KL1508A / KL1516A to one of the KVM adapter cables.
- The following KVM adapter cables are required for use with the KL1508A / KL1516A:

Function	Module
Connect to devices with PS/2 ports	KA7920 / KA7520 / KA7120 / KA9520 / KA9120
Connect to devices with USB ports	KA7970 / KA7570 / KA7170 / KA9570 / KA9170
Connect to Sun Legacy systems (with 13W3 port)	KA9130 / KA7130
Connect to Sun USB systems	KA9170 / KA7170
Connect to serial based devices	KA9140

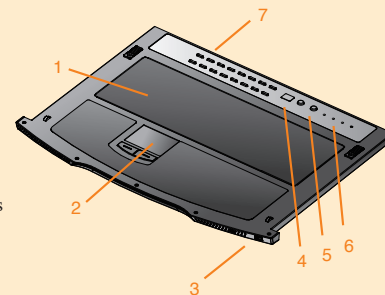
3 Hardware Review (Front View)

1. Upper Handle
2. LCD Module
3. Keyboard Module
4. Lower Handle
5. Power LED
6. Keyboard Release Catch
7. LCD Release Catch
8. Rack Mounting Tabs



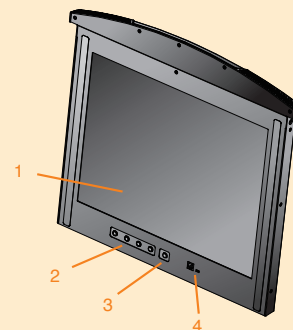
Keyboard Module

- 1 Keyboard
- 2 Touchpad
3. External Mouse Port
4. Station ID LED
5. Station Selection Area
6. Lock LEDs & Reset Switch
7. Port Selection Buttons and LEDs

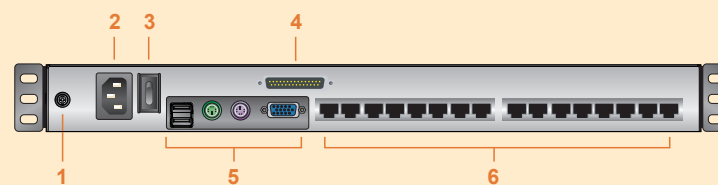


LCD Module

1. LCD Display
2. LCD Controls
3. LCD On/Off Button
4. Firmware Upgrade Section



4 Hardware Review (Rear View)



1. Grounding Terminal
2. Power Socket
3. Power Switch
4. Daisy Chain Ports
5. Console Ports Section
6. KVM Port Section

Note: The front and rear panel views are similar for the KL1508A, the difference being that the KL1508A has only 8 buttons on the control pad and 8 ports in the rear panel.

5 Hardware Installation

Rack Mounting

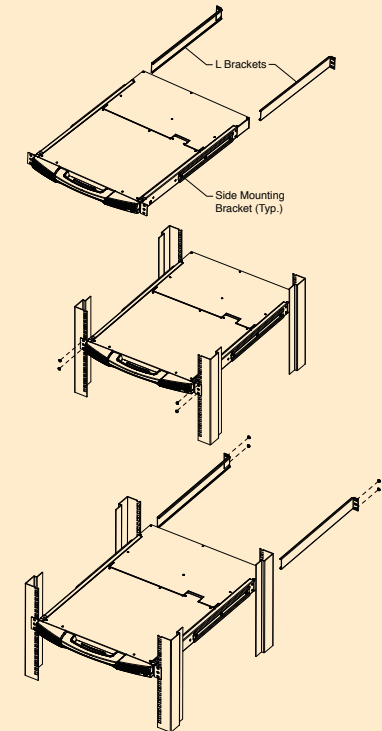
A standard rack mounting kit is provided with your KL1508A / KL1516A. The kit enables the switch to be mounted in rack with a depth of 42–77 cm.

To rack mount the switch, do the following:

1. While one person positions the switch in the rack and holds it in place, the second person—using the screws provided with the rack mounting kit—loosely screws the front brackets to the rack.

2. While the first person still holds the switch in place, the second person slides the L brackets into the switch's side mounting brackets, from the rear until the bracket flanges contact the rack, then—using the screws provided with the rack mounting kit—screws the L brackets to the rack

3. After the L brackets have been secured, tighten the front bracket screws.



Single Station Installation

In a single stage installation, there are no additional KVM switches daisy chained down from the KL1508A / KL1516A. To set up a single stage installation, refer to the installation diagrams (the numbers in the diagram correspond with the numbers of the instruction steps), and do the following:

1. Ground the KL1508A / KL1516A by connecting one end of the grounding wire provided with your switch to the grounding terminal, and the other end of the wire to a suitable grounded object.

Note: Do not omit this step. Proper grounding helps to prevent damage to the unit from surges or static electricity

2. Plug the console keyboard, monitor, and mouse into the unit's console ports. The ports are color coded and marked with icons for easy identification.

Note: You can use any combination of keyboard and mouse connections. For example, you can use a PS/2 keyboard with a USB mouse.

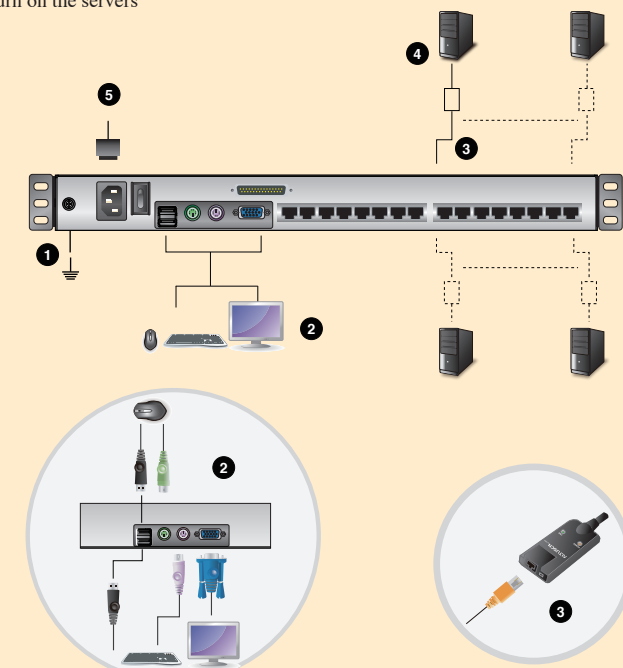
3. Use Cat 5e/6 cable to connect any available KVM port to a KVM adapter cable that is appropriate for the computer you are installing.

Note: To support a resolution of 1280x1024, the recommended maximum distance between the unit and the KVM adapter cable is 50 meters.

4. Connect the KVM adapter cable to the computer. Plug the connectors on the KVM adapter cable into the appropriate ports of the computer you are installing.

5. Plug the female end of the power cord into the KL1508A / KL1516A's power socket; plug the male end into an AC power source.

After the KL1508A / KL1516A is cabled up, you can turn on the power. After it is powered up, you can turn on the servers



6

Operation

Port Selection

KL1508A / KL1516A installations provide three methods to obtain instant access to any computer on your installation: Manual, OSD (on-screen display), and Hotkey.

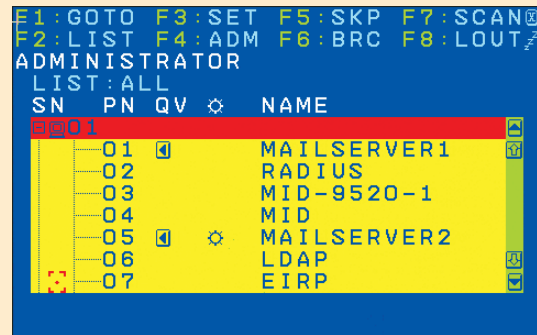
Manual

Manual port selection simply involves pressing the port selection switch that corresponds to the device you wish to access.

OSD

The On Screen Display (OSD) is a menu driven method to handle computer control and switching operations. All procedures start from the OSD Main Screen. To display the Main Screen, tap the OSD hotkey twice. The default hotkey is [Scroll Lock]. You can change the hotkey to the Ctrl key or the Alt key if you like.

The OSD incorporates a two level (administrator / user) password system. Before the OSD Main Screen comes up, a login dialog box appears requesting a username and password. You must provide a valid username and password in order to continue. The first time that the OSD is accessed, you must use the default username and password. The default username is **administrator**; the default password is **password**. For security purposes, we strongly recommend changing these to something unique after you log in for the first time. After logging in with the default username and password, the OSD Main Screen opens in Administrator mode as below.



To bring the KVM focus to a port, double-click it, or move the highlight bar to it and then press [Enter].

Hotkey

Hotkeys allow you to conveniently provide KVM focus to a particular computer from the keyboard instead of having to manually select them by pressing port selection switches, or accessing the OSD.

Invoking Hotkey Mode

Number Lock and Minus Keys (Default)

1. Hold down the **Num Lock** key;
2. Press and release the **minus** key;
3. Release the **Num Lock** key:

[Num Lock] + [-]

Control and F12 Keys (Alternate)

1. Hold down the **Ctrl** key;
2. Press and release the **F12** key;
3. Release the **Ctrl** key:

[Ctrl] + [F12]

7

Hotkey Summary Table

[A] [Enter]	Invokes Auto Scan mode. When Auto Scan mode is in effect, [P] or left-click pauses auto-scanning. When auto-scanning is paused, pressing any key or another left-click resumes auto-scanning.
[B]	Toggles the Beeper On or Off.
[Esc] or [Spacebar]	Exits hotkey mode.
[F1]	Sets Operating System to Windows
[F2]	Sets Operating System to Mac
[F3]	Sets Operating System to Sun
[F5]	Performs a keyboard / mouse reset on the target computer.
[H]	Toggles the Hotkey invocation keys.
[Port ID] [Enter]	Switches access to the computer that corresponds to that Port ID.
[R] [Enter]	Administrator only hotkey. It returns the switch's settings to their default values.
[T]	Toggles the OSD Hotkey between [Ctrl] [Ctrl] and [Scroll Lock] [Scroll Lock].
[←]	Invokes Skip Mode and skips from the current port to the first accessible port previous to it.
[→]	Invokes Skip Mode and skips from the current port to the next accessible port.
[↑]	Invokes Skip Mode and skips from the current port to the last accessible port of the previous Station.
[↓]	Invokes Skip Mode and skips from the current port to the first accessible port of the next Station.

[Num Lock] + [-] or [Ctrl] + [F12]

8

Specifications

Function		KL1508A	KL1516A		
Computer Connections	Direct	8	16		
	Max.	256 (via Daisy Chain)	512 (via Daisy Chain)		
Port Selection		OSD (On Screen Display); Hotkeys Pushbuttons			
Connectors	Console	Keyboard	1 x 6-pin Mini-DIN Female (Purple); 1 x USB Type A Female (White)		
		Video	1 x HDB-15 Female (Blue)		
		Mouse	1 x 6-pin Mini-DIN Female (Green); 1 x USB Type A Female (White)		
	KVM Ports		8 x RJ-45 Female (Black)	16 x RJ-45 Female (Black)	
	Daisy Chain	Chain Out	1 x DB-25 Male (Black)		
	F/W Upgrade		1 x RJ-11 Male (Black)		
	Power		1 x 3-Prong AC socket		
	External Mouse		1 x USB Type A (Female)		
	Switches	Port Selection		8 x Pushbutton	16 x Pushbutton
		KVM Reset		1 x Semi-recessed Pushbutton	
F/W Upgrade		1 x Slide			
Power		1 x Rocker			
LCD Power		1 x Pushbutton			
LCM Adjustment		4 x Pushbutton			
Station		2 x Pushbutton			
LEDs	Port	On Line	8 (Green)	16 (Green)	
		Selected	8 (Orange)	16 (Orange)	
	Power		1 (Blue)		
	Station ID		1 x 2 Digit 7-segment (Orange)		
	Lock			1 x Num Lock (Green)	
				1 x Caps Lock (Green)	
		1 x Scroll Lock (Green)			
LCD Power		1 (Orange)			
Emulation	Keyboard / Mouse	PS/2; USB (PC, Mac, Sun); Serial			
Video		1280 x 1024 @ 75Hz			
Scan Interval		1-255 sec.			
I/P Rating		100-240 VAC; 50/60 Hz; 1A			
Power Consumption	17" LCD	100V 26.2W / 230V 27.4W			
	19" LCD	100V 28.2W / 230V 29.1W			
Environment	Operating Temp.		0 - 40°C		
	Storage Temp.		-20-60°C		
	Humidity		0-80% RH, Non-condensing		
Physical Properties	Housing		Metal		
	Weight	17" LCD	16.84 kg	16.86 kg	
		19" LCD	18.31 kg	18.33 kg	
	Dimensions (L x W x H)	17" LCD	70.90 x 48.20 x 4.40 cm		
19" LCD		76.00 x 48.20 x 4.40 cm			